

SITE LOCATION

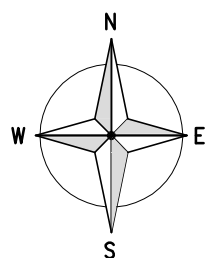


SITE LOCATION  
(Scale 1:50000)

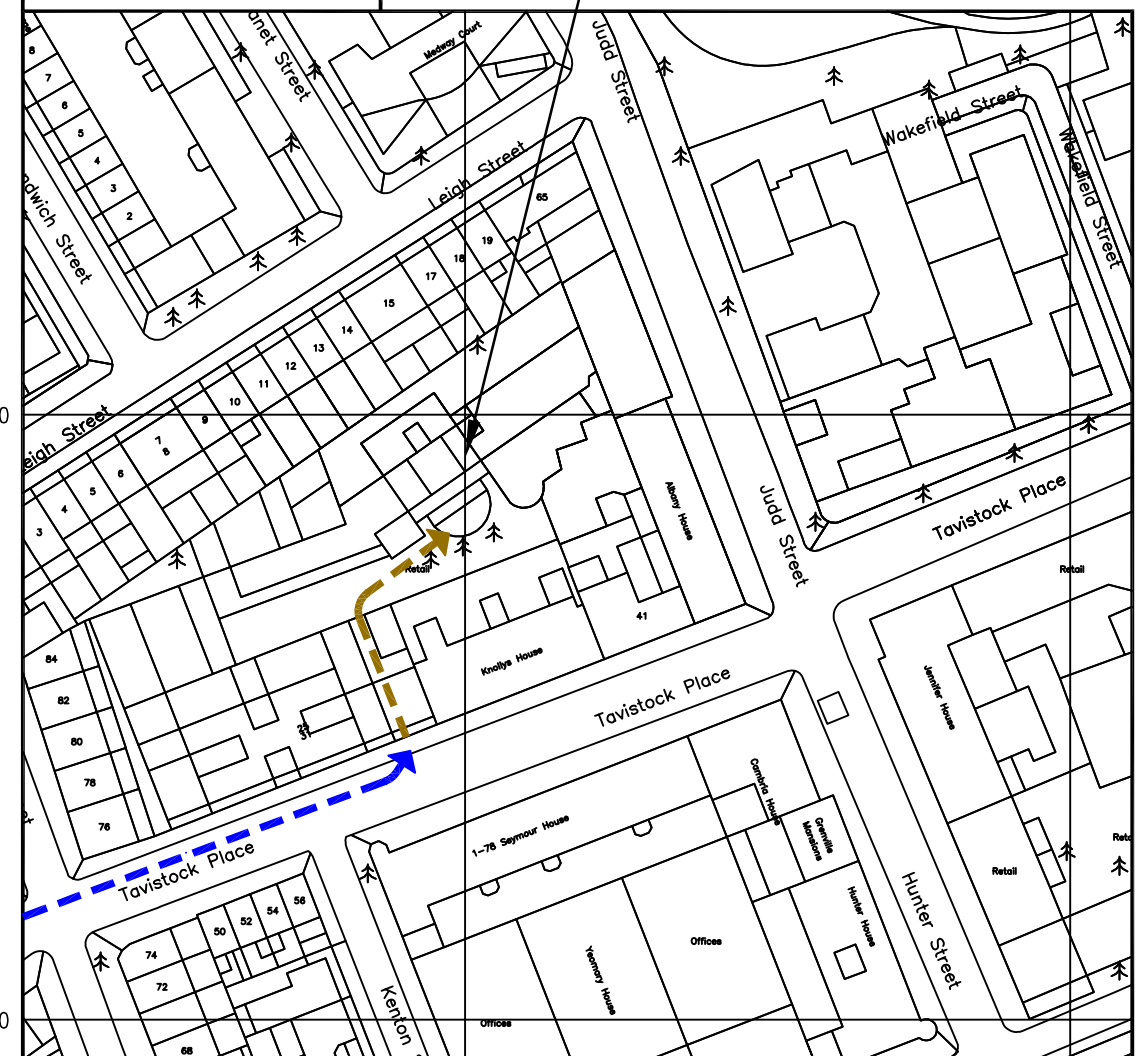
Ordnance Survey map extract based upon Landranger map series with the permission of the controller of Her Majesty's Stationery Office  
Mono Consultants Limited licence No. ES100017753  
Crown copyright.



SITE PHOTOGRAPH



← = Directions to Site  
→ = Access Route



SITE LOCATION

DETAILED SITE LOCATION  
(Scale 1:1250)

Based upon Ordnance Survey map extract with the permission of the Controller of Her Majesty's Stationery Office.  
Crown copyright.  
Mono Consultants Limited licence No. ES100017753  
Promap licence No. A152065A0001

Notes:  
1 ALL DIMENSIONS ARE IN MM UNLESS NOTED OTHERWISE  
2 DRAWING TO SCALE WHEN PRINTED AT A3

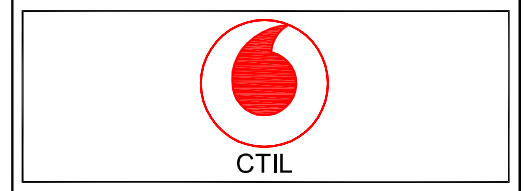
N.G.R. E: 530187 N: 182488

**Directions**  
Heading on the M40, continue on the A40 into Central London towards West End. After passing over the Westway, continue onto the A501. After passing Euston Station on the left hand side turn right at the traffic lights into the A4200 Tavistock Square. Turn first left into Tavistock Place. Continue straight over the traffic lights, then immediately after passing Kenton Street on the right hand side turn left through the archway on the left. Turn right and the Generator Hostel entrance is on the left.  
Nearest Tube Station is Euston.

B	NGR Revised	DN	AKB	11.11.15
A	Issued for Approval	RW	PM	21.09.15
REV	MODIFICATION	BY	CH	DATE

**mono #**

MONO CONSULTANTS LIMITED  
No. 58 Cygnet Court  
Timothy's Bridge Road  
Stratford-upon-Avon  
Warwickshire  
CV37 9NW  
t. 44 (0)1789 206500  
f. 44 (0)1789 206529  
www.monoconsultants.com



Cell Name	Opt
GENERATOR HOSTEL LONDON	SOR1667

Cell ID No		
CTIL	Host	Sharer
(CTIL)147982_3	(VF) 80443	(TEF) 072424

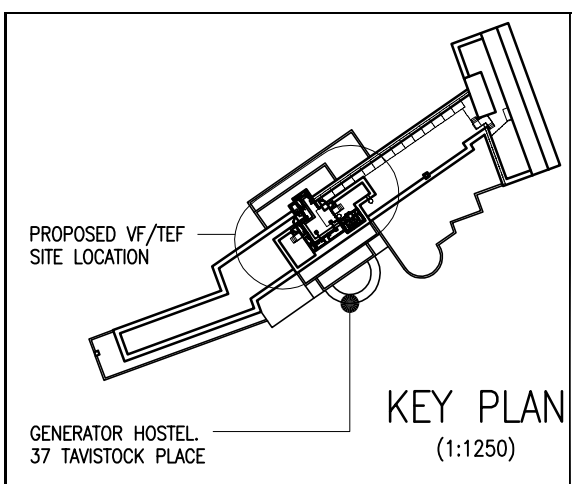
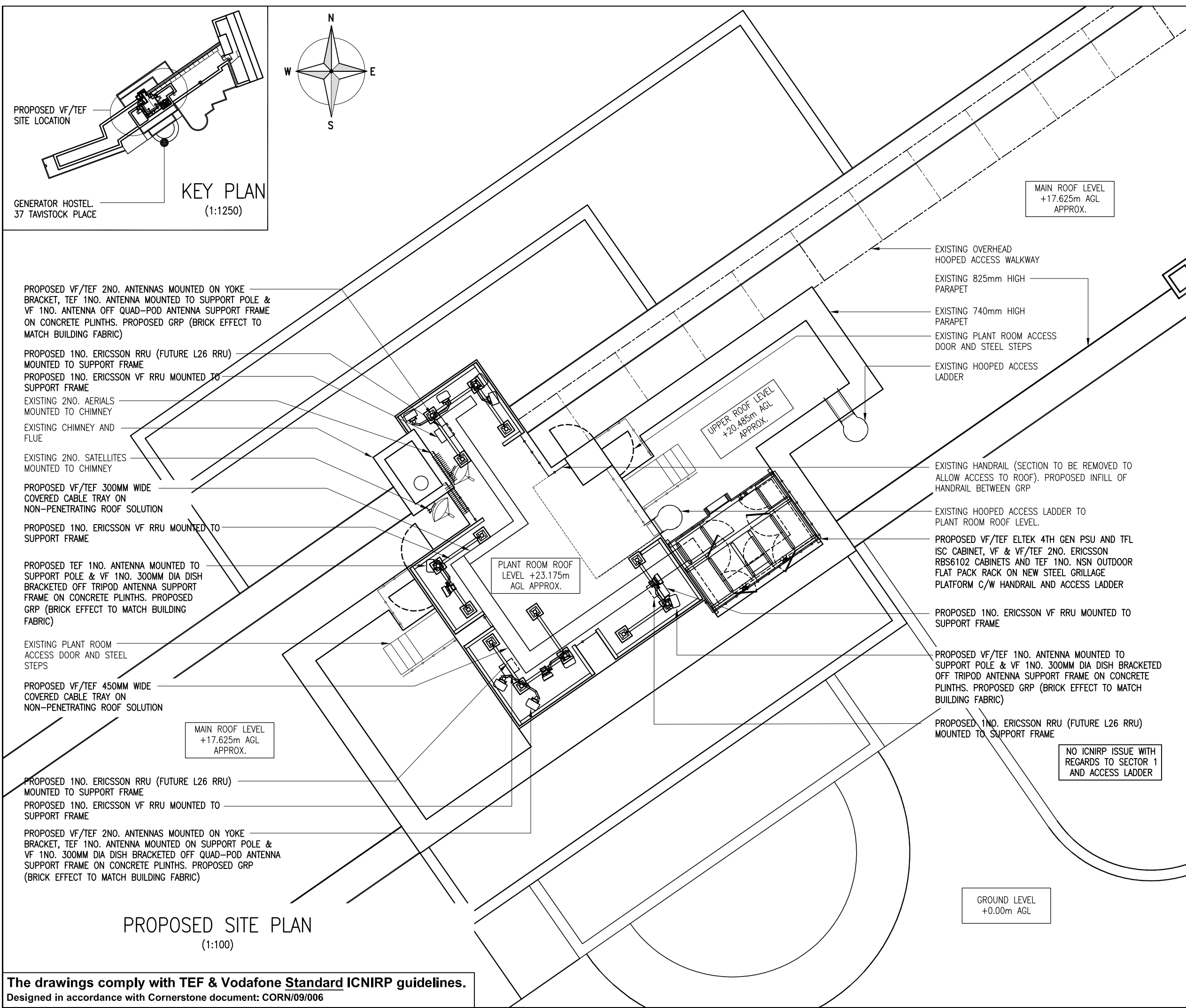
Site Address / Contact Details  
GENERATOR HOSTEL LONDON  
37 TAVISTOCK PLACE  
LONDON  
WC1H 9SE

Drawing Title: SITE LOCATION MAPS

Purpose of issue: PLANNING

Drawing Number: 100

Scale:	As Shown	Drawn:	RW	Date:	21.09.15	Issue:	B
Checked:	PM	Date:	21.09.15	Approved:	AB	Date:	



**PROPOSED VF/TEF 2NO. ANTENNAS MOUNTED ON YOKE BRACKET, TEF 1NO. ANTENNA MOUNTED TO SUPPORT POLE & VF 1NO. ANTENNA OFF QUAD-POD ANTENNA SUPPORT FRAME ON CONCRETE PLINTHS. PROPOSED GRP (BRICK EFFECT TO MATCH BUILDING FABRIC)**

**PROPOSED 1NO. ERICSSON RRU (FUTURE L26 RRU) MOUNTED TO SUPPORT FRAME**

**PROPOSED 1NO. ERICSSON VF RRU MOUNTED TO SUPPORT FRAME**

EXISTING 2NO. AERIALS MOUNTED TO CHIMNEY

EXISTING CHIMNEY AND FLUE

EXISTING 2NO. SATELLITES MOUNTED TO CHIMNEY

**PROPOSED VF/TEF 300MM WIDE COVERED CABLE TRAY ON NON-PENETRATING ROOF SOLUTION**

**PROPOSED 1NO. ERICSSON VF RRU MOUNTED TO SUPPORT FRAME**

**PROPOSED TEF 1NO. ANTENNA MOUNTED TO SUPPORT POLE & VF 1NO. 300MM DIA DISH BRACKETED OFF TRIPOD ANTENNA SUPPORT FRAME ON CONCRETE PLINTHS. PROPOSED GRP (BRICK EFFECT TO MATCH BUILDING FABRIC)**

EXISTING PLANT ROOM ACCESS DOOR AND STEEL STEPS

**PROPOSED VF/TEF 450MM WIDE COVERED CABLE TRAY ON NON-PENETRATING ROOF SOLUTION**

**PROPOSED 1NO. ERICSSON RRU (FUTURE L26 RRU) MOUNTED TO SUPPORT FRAME**

**PROPOSED 1NO. ERICSSON VF RRU MOUNTED TO SUPPORT FRAME**

**PROPOSED VF/TEF 2NO. ANTENNAS MOUNTED ON YOKE BRACKET, TEF 1NO. ANTENNA MOUNTED ON SUPPORT POLE & VF 1NO. 300MM DIA DISH BRACKETED OFF QUAD-POD ANTENNA SUPPORT FRAME ON CONCRETE PLINTHS. PROPOSED GRP (BRICK EFFECT TO MATCH BUILDING FABRIC)**

**PROPOSED SITE PLAN**  
(1:100)

**The drawings comply with TEF & Vodafone Standard ICNIRP guidelines.**  
Designed in accordance with Cornerstone document: CORN/09/006

Notes:  
1 ALL DIMENSIONS ARE IN MM UNLESS NOTED OTHERWISE  
2 DRAWING TO SCALE WHEN PRINTED AT A3

N.G.R. E: 530187 N: 182488

REV	MODIFICATION	BY	CH	DATE
C	ICNIRP note/RRU's added	DN	AKB	01.12.15
B	NGR / Antenna Layout Revised	DN	AKB	11.11.15
A	Issued for Approval	RW	PM	21.09.15

<b>mono #</b> MONO CONSULTANTS LIMITED No. 58 Cygnet Court Timothy's Bridge Road Stratford-upon-Avon Warwickshire CV37 9NW t. 44 (0)1789 206500 f. 44 (0)1789 206529 <a href="http://www.monoconsultants.com">www.monoconsultants.com</a>				
--	--	--	--	--

 <b>CTIL</b>	
<b>Cell Name</b>	<b>Opt</b>
GENERATOR HOSTEL LONDON	SOR1667
<b>Cell ID No</b>	
CTIL	Host
(CTIL)147982_3	(VF) 80443
<b>Site Address / Contact Details</b>	
GENERATOR HOSTEL LONDON 37 TAVISTOCK PLACE LONDON WC1H 9SE	

<b>Drawing Title:</b> PROPOSED SITE PLAN			
<b>Purpose of issue:</b> PLANNING			
<b>Drawing Number:</b> 200			
<b>Scale:</b> As Shown	<b>Drawn:</b> RW	<b>Date:</b> 21.09.15	<b>Issue:</b>
<b>Checked:</b> PM	<b>Date:</b> 21.09.15	<b>Approved:</b> AB	<b>Date:</b> 21.09.15
			<b>C</b>

GROUND LEVEL  
+0.00m AGL

MAIN ROOF LEVEL  
+17.625m AGL  
APPROX.

UPPER ROOF LEVEL  
+20.485m AGL  
APPROX.

PLANT ROOM ROOF  
LEVEL +23.175m  
AGL APPROX.

NO ICNIRP ISSUE WITH  
REGARDS TO SECTOR 1  
AND ACCESS LADDER

Notes:  
 1 ALL DIMENSIONS ARE IN MM UNLESS NOTED OTHERWISE  
 2 DRAWING TO SCALE WHEN PRINTED AT A3

N.G.R. E: 530187 N: 182488

PROPOSED 1NO. ERICSSON RRU (FUTURE L26 RRU) MOUNTED TO SUPPORT FRAME

EXISTING HANDRAIL (SECTION TO BE REMOVED TO ALLOW ACCESS TO ROOF).  
 PROPOSED INFILL OF HANDRAIL BETWEEN GRP

PROPOSED VF/TEF 2NO. ANTENNAS MOUNTED ON YOKE BRACKET, TEF 1NO. ANTENNA MOUNTED ON SUPPORT POLE & VF 1NO. 300MM DIA DISH BRACKETED OFF QUAD-POD ANTENNA SUPPORT FRAME ON CONCRETE PLINTHS. PROPOSED GRP (BRICK EFFECT TO MATCH BUILDING FABRIC)

PROPOSED 1NO. ERICSSON RRU (FUTURE L26 RRU) MOUNTED TO SUPPORT FRAME

C/L OF PROPOSED DISHES  
 +25.5m AGL

PROPOSED 1NO. ERICSSON VF RRU MOUNTED TO SUPPORT FRAME

PLANT ROOM ROOF HEIGHT  
 +23.175m AGL

UPPER ROOF HEIGHT  
 +20.485m AGL

MAIN ROOF HEIGHT  
 +17.625m AGL

PROPOSED VF/TEF 1NO. ANTENNA MOUNTED TO SUPPORT POLE & VF 1NO. 300MM DIA DISH BRACKETED OFF TRIPOD ANTENNA SUPPORT FRAME ON CONCRETE PLINTHS. PROPOSED GRP (BRICK EFFECT TO MATCH BUILDING FABRIC)

PROPOSED 1NO. ERICSSON VF RRU MOUNTED TO SUPPORT FRAME

EXISTING HOOPED ACCESS LADDER TO PLANT ROOM ROOF LEVEL.  
 PROPOSED VF/TEF ELTEK 4TH GEN PSU AND TFL ISC CABINET, VF & VF/TEF 2NO. ERICSSON RBS6102 CABINETS AND TEF 1NO. NSN OUTDOOR FLAT PACK RACK ON NEW STEEL GRILLAGE PLATFORM C/W HANDRAIL AND ACCESS LADDER

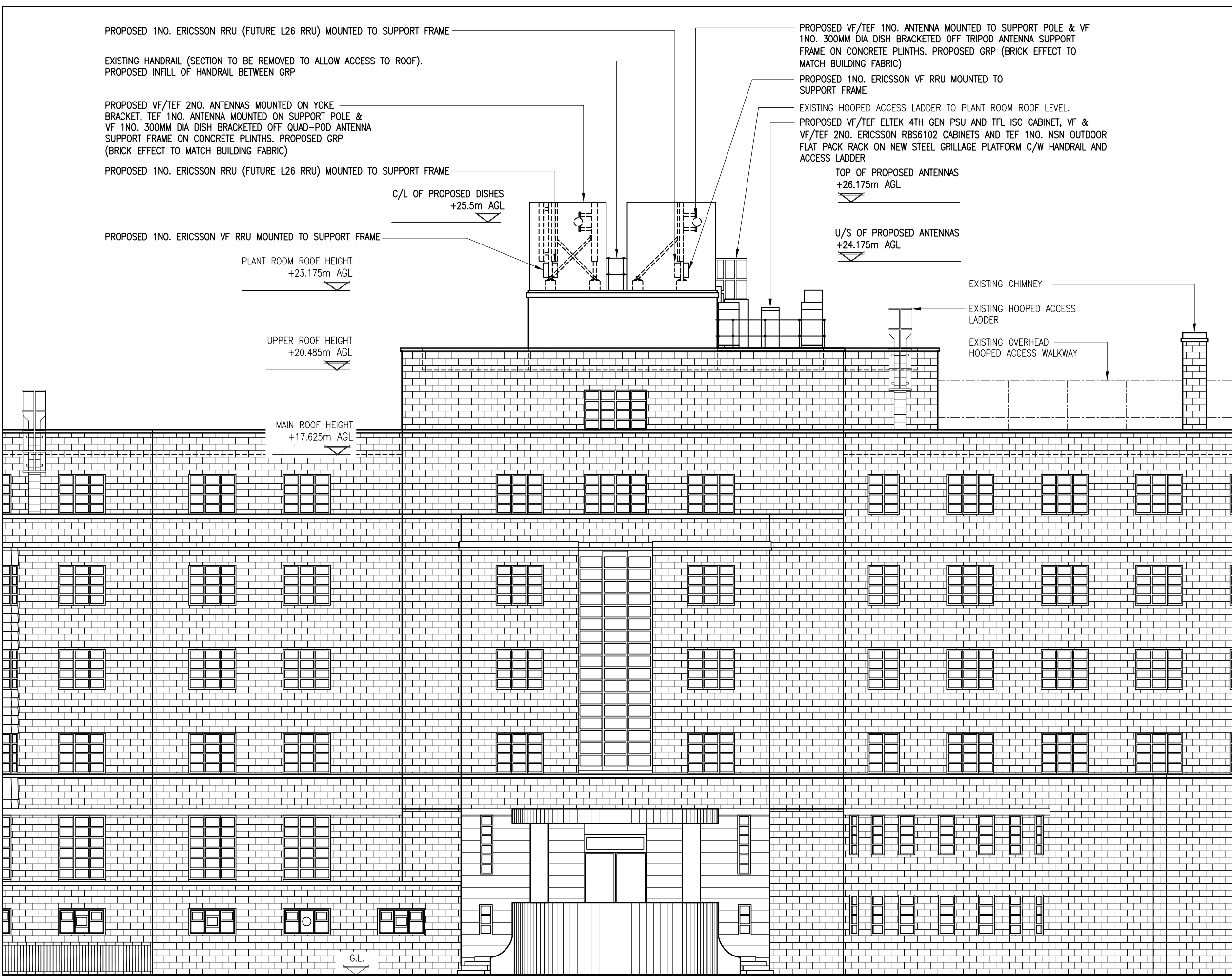
TOP OF PROPOSED ANTENNAS  
 +26.175m AGL

U/S OF PROPOSED ANTENNAS  
 +24.175m AGL

EXISTING CHIMNEY

EXISTING HOOPED ACCESS LADDER

EXISTING OVERHEAD HOOPED ACCESS WALKWAY



C	ICNIRP note/RRU's added	DN	AKB	01.12.15
B	NGR / Antenna Layout Revised	DN	AKB	11.11.15
A	Issued for Approval	RW	PM	21.09.15
REV	MODIFICATION	BY	CH	DATE

**mono #**

MONO CONSULTANTS LIMITED  
 No. 58 Cygnet Court  
 Timothy's Bridge Road  
 Stratford-upon-Avon  
 Warwickshire  
 CV37 9NW  
 t. 44 (0)1789 206500  
 f. 44 (0)1789 206529  
 www.monoconsultants.com



Cell Name	Opt
GENERATOR HOSTEL LONDON	SOR1667

Cell ID No		
CTIL	Host	Sharer
(CTIL)147982_3	(VF) 80443	(TEF) 072424

Site Address / Contact Details

GENERATOR HOSTEL LONDON  
 37 TAVISTOCK PLACE  
 LONDON  
 WC1H 9SE

Drawing Title: PROPOSED SITE ELEVATION

Purpose of issue: PLANNING

Drawing Number: 300

Scale:	As Shown	Drawn:	RW	Date:	21.09.15	Issue:	
Checked:	PM	Date:	21.09.15	Approved:	AB	Date:	21.09.15
							C

The drawings comply with TEF & Vodafone Standard ICNIRP guidelines.  
 Designed in accordance with Cornerstone document: CORN/09/006

PROPOSED SITE ELEVATION  
 (1:125)