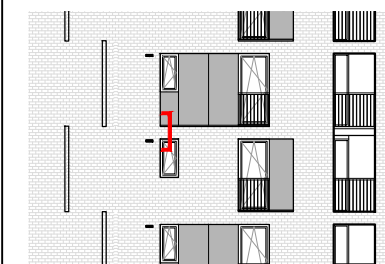
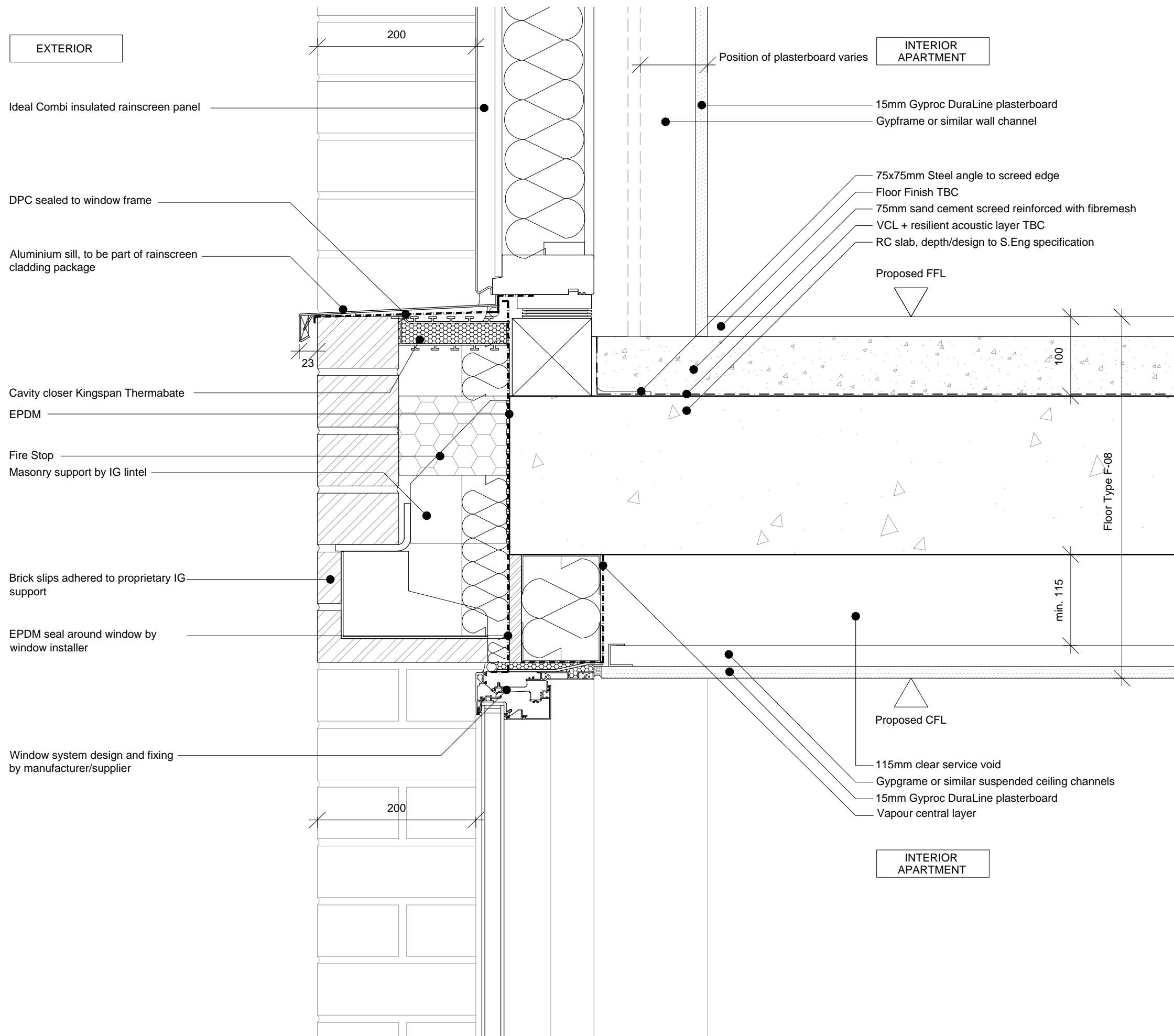


This drawing and design is for use solely in connection with the project described below. The drawing and design is the copyright of Avanti Architects Ltd, and must not be re-issued, loaned or copied without written consent. All dimensions and setting out to be checked on site before construction. This drawing is to be read in conjunction with all other information relevant to the project. Any apparent discrepancy is to be brought to the attention of Avanti Architects Ltd. Do not scale from this drawing.

Notes



See 12026-T-XX-DE-31-200 for plan detail



EXTERIOR

INTERIOR APARTMENT

INTERIOR APARTMENT

Ideal Combi insulated rainscreen panel

DPC sealed to window frame

Aluminium sill, to be part of rainscreen cladding package

Cavity closer Kingspan Thermabate

EPDM

Fire Stop

Masonry support by IG lintel

Brick slips adhered to proprietary IG support

EPDM seal around window by window installer

Window system design and fixing by manufacturer/supplier

Position of plasterboard varies

15mm Gyproc DuraLine plasterboard

Gypframe or similar wall channel

75x75mm Steel angle to screed edge

Floor Finish TBC

75mm sand cement screed reinforced with fibremesh

VCL + resilient acoustic layer TBC

RC slab, depth/design to S.Eng specification

Proposed FFL

Floor Type F-08

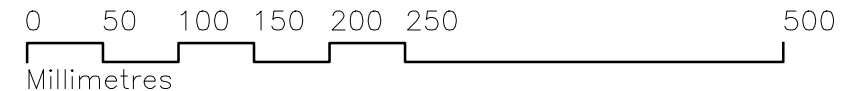
Proposed CFL

115mm clear service void

Gypframe or similar suspended ceiling channels

15mm Gyproc DuraLine plasterboard

Vapour central layer



Revision	Date	Drawn by	Checked	Description

Scale	Size	Date First Issue
1:5	A3	14/01/16
Drawn by	Checked by	
IMA/SJ	AM	

Project  
Tybald's Estate

Drawing  
WINDOW HEAD BELOW FACING BRICKWORK AND RAINSCREEN WINDOW PANEL

Drawing number  
12026-T-XX-DE-31-104

Status  
CONSTRUCTION

