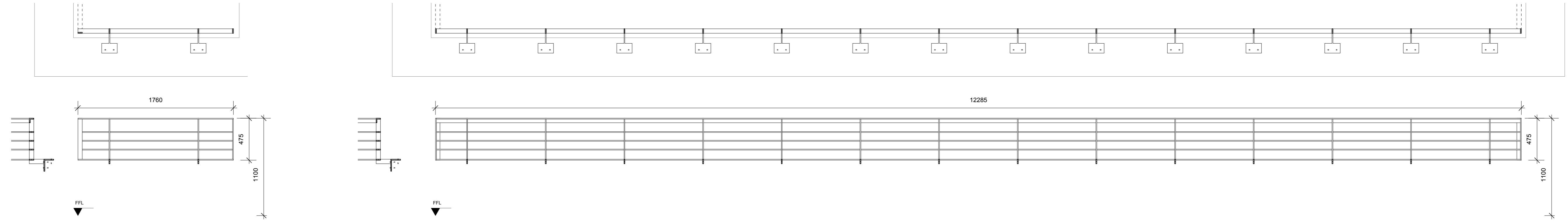


Balustrades

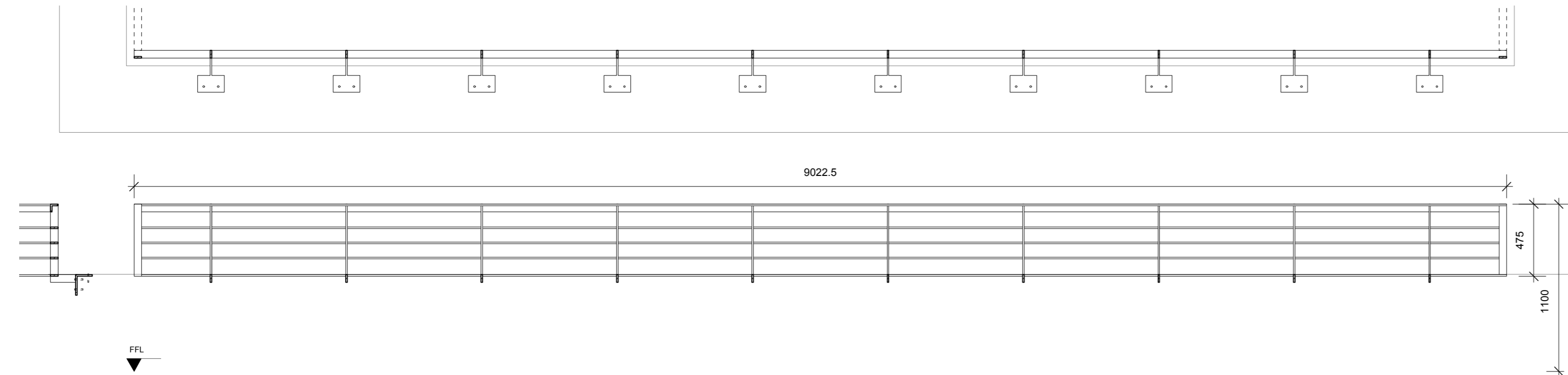


BALUSTRADE TYPE F:

LOCATION: 4F
 NO OF BALUSTRADES: 1
 SUPPLIER:
 PERIMETER DIMS: 475(h) x 1760(w)
 NOTES:

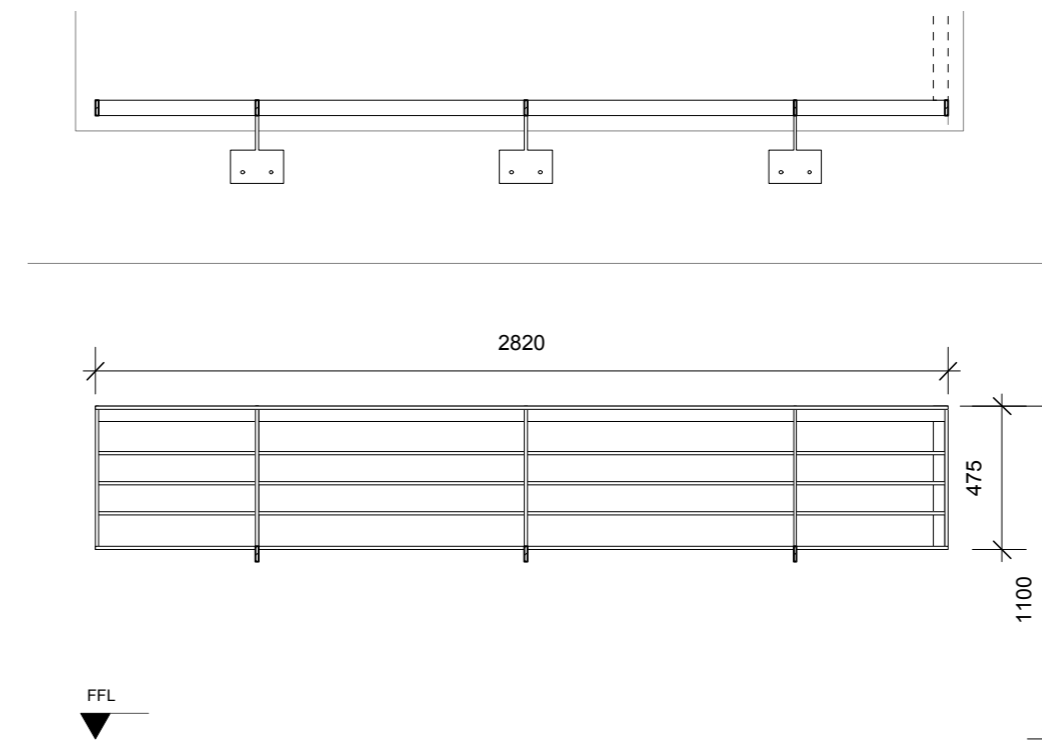
BALUSTRADE TYPE G:

LOCATION: 4F
 NO OF BALUSTRADES: 1
 SUPPLIER:
 PERIMETER DIMS: 475(h) x 12285(w)
 NOTES:



BALUSTRADE TYPE H:

LOCATION: 4F
 NO OF BALUSTRADES: 1
 SUPPLIER:
 PERIMETER DIMS: 475(h) x 9022.5(w)
 NOTES:



BALUSTRADE TYPE J:

LOCATION: 4F
 NO OF BALUSTRADES: 1
 SUPPLIER:
 PERIMETER DIMS: 475(h) x 2820(w)
 NOTES:



NOTES:
 - PLEASE REFER TO SPECIFICATION SECTION L30 FOR ALL FINISHES
 - PLEASE REFER TO DWG 1211_Z3_750-752 FOR FIXING DETAILS
 - PLEASE REFER TO DWG 1211_Z3_251-253 FOR POSITIONING
 - ALL BALUSTRADE REFERENCES TO BE CHECKED BY CONTRACTOR PRIOR TO PRICING.



DO NOT SCALE FROM THIS DRAWING
 ALL DIMENSIONS TO BE CHECKED ON SITE BY THE CONTRACTOR
 AND SUCH DIMENSIONS TO BE HIS RESPONSIBILITY
 REPORT ALL DRAWING ERRORS AND OMISSIONS TO THE ARCHITECT
 ALL DIMENSIONS IN MILLIMETERS UNLESS NOTED OTHERWISE
 IF IN DOUBT ASK CONTRACT ADMINISTRATOR

m&c
 mae LLP
 1 Naeonj Street, London, WC1X 0GB
 Telephone 020 7704 6060
 www.mae-lp.co.uk.com

job title
 TYBALDS CLOSE ESTATE

drawing title
 DEVONSHIRE NEW BUILD BALUSTRADE SCHEDULE PART 2

status	TENDER	drawing no	revision
A	18.12.15 ISSUED FOR PLANNING CONDITION DISCHARGE		
/	11.12.15 PACKAGE 4 TENDER ISSUE	23 708	A
job no	1211		

REVISION	DATE	AMENDMENT
A	18.12.15	ISSUED FOR PLANNING CONDITION DISCHARGE
/	11.12.15	PACKAGE 4 TENDER ISSUE