

Lift shaft dimensions to be confirmed by M+E engineer

Pre-cast stair from ground floor up by specialist  
Pre-cast frame from ground floor up by specialist

In-situ concrete stair down to basement to SE specification

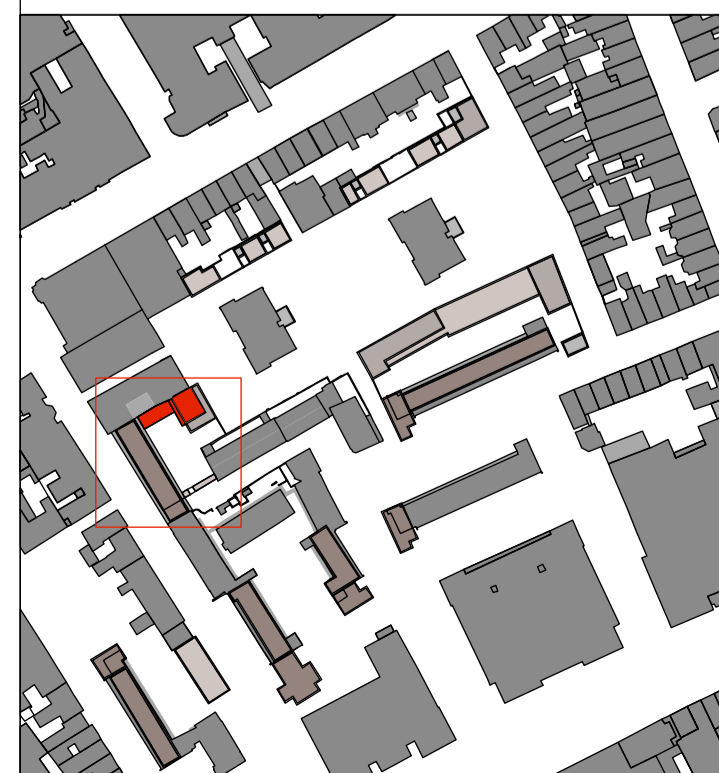
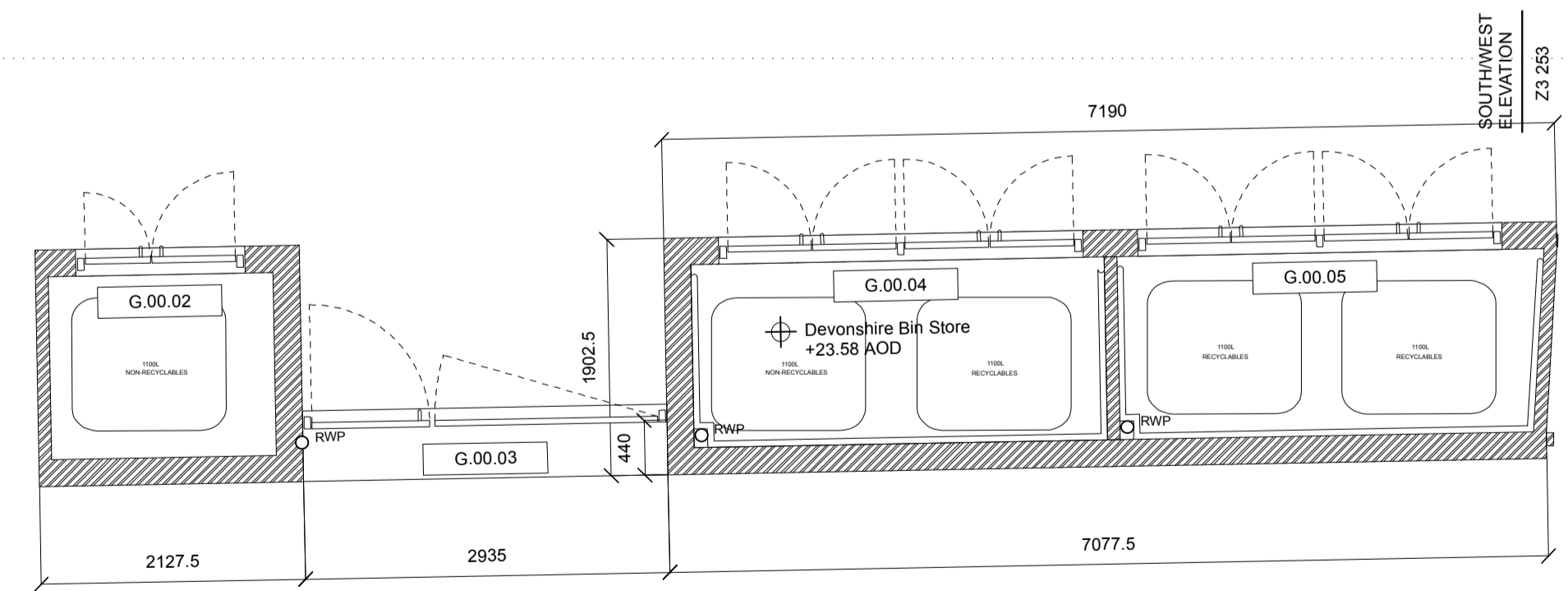
In-situ concrete structure to SE specification

Binstores to South of plan

Binstores to South of plan

Notes:

- Pre-cast stair frame and rear decks to Devonshire by specialist
- In-situ concrete frame to Structural Engineers DWGs/Specification
- Schock connectors to Structural Engineers DWGs/Specification
- Lift shaft dimension to be confirmed by M+E engineer



REVISION	DATE	AMENDMENT
E	07.01.16	PACKAGE 3&4 CONSTRUCTION ISSUE
D	03.12.15	PACKAGE 3 ISSUED FOLLOWING CLIENT COMMENTS & DEVELOPMENT
C	27.11.15	PACKAGE 4 TENDER ISSUE
B	16.11.15	DOOR & WINDOW REFERENCES UPDATED FOR DOOR & WINDOW SCHEDULE PRELIMINARY ISSUE. BINSTORES TO SOUTH OF PLAN ADDED.
A	12.11.15	PARTITION WALLS UPDATED. ISSUED FOR PACKAGE 3 TENDER
/	30.10.15	PACKAGE 3 TENDER ISSUE

DO NOT SCALE FROM THIS DRAWING. ALL DIMENSIONS TO BE CHECKED ON SITE BY THE CONTRACTOR AND SUCH DIMENSIONS TO BE HIS RESPONSIBILITY. REPORT ALL DRAWING ERRORS AND OMISSIONS TO THE ARCHITECT. ALL DIMENSIONS IN MILLIMETERS UNLESS NOTED OTHERWISE. IF IN DOUBT ASK CONTRACT ADMINISTRATOR.

<b>mac</b> mac LLP 1 Naoroj Street, London, WC1X 0GB Telephone 020 7704 6060 www.mac-llp.co.uk.com			
job title TYBALDS CLOSE ESTATE			
drawing title DEVONSHIRE UNIT PLANS GROUND FLOOR			
status	CONSTRUCTION	drawing no	revision
scale	1:50@A1	Z3-231	E
job no	1211		