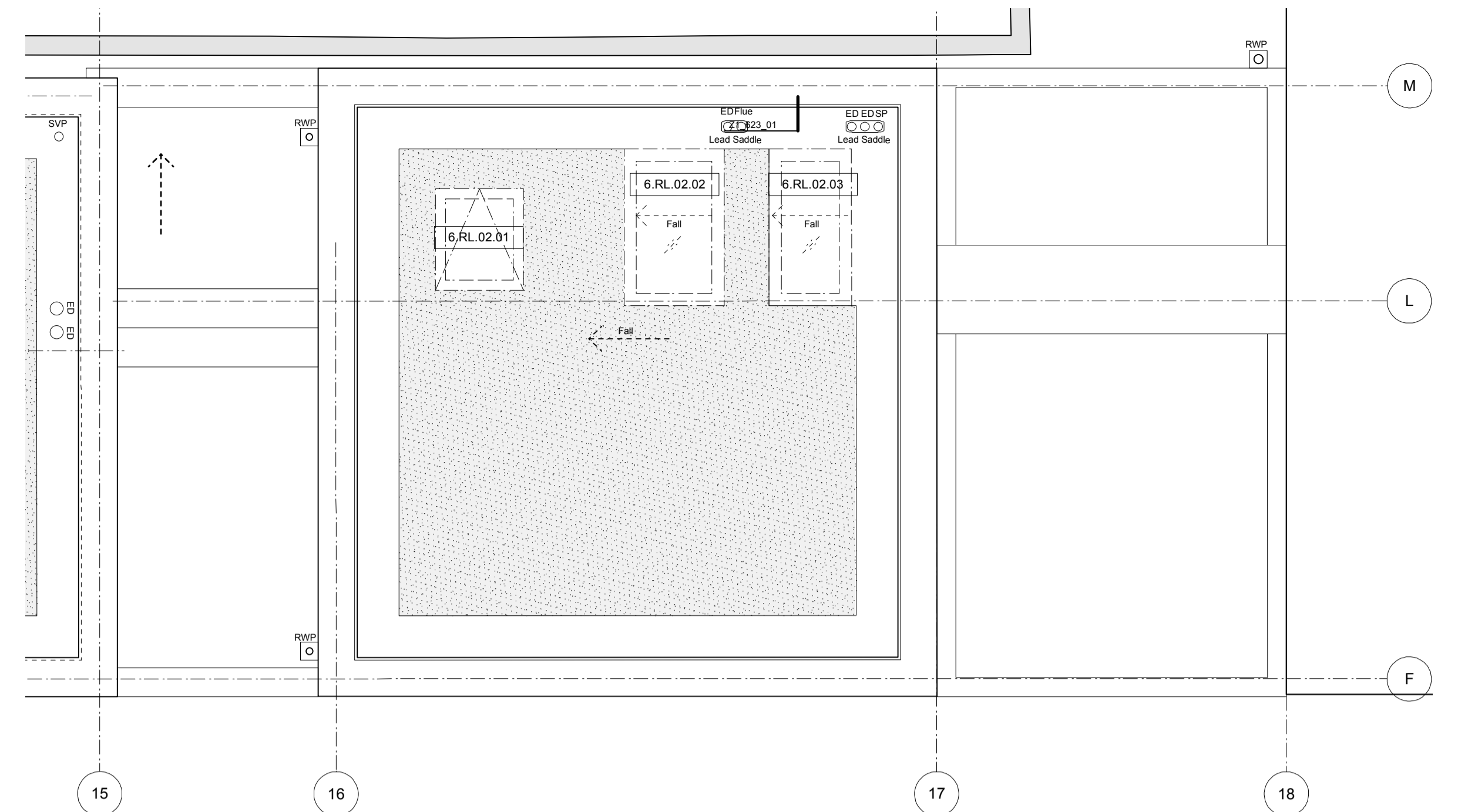
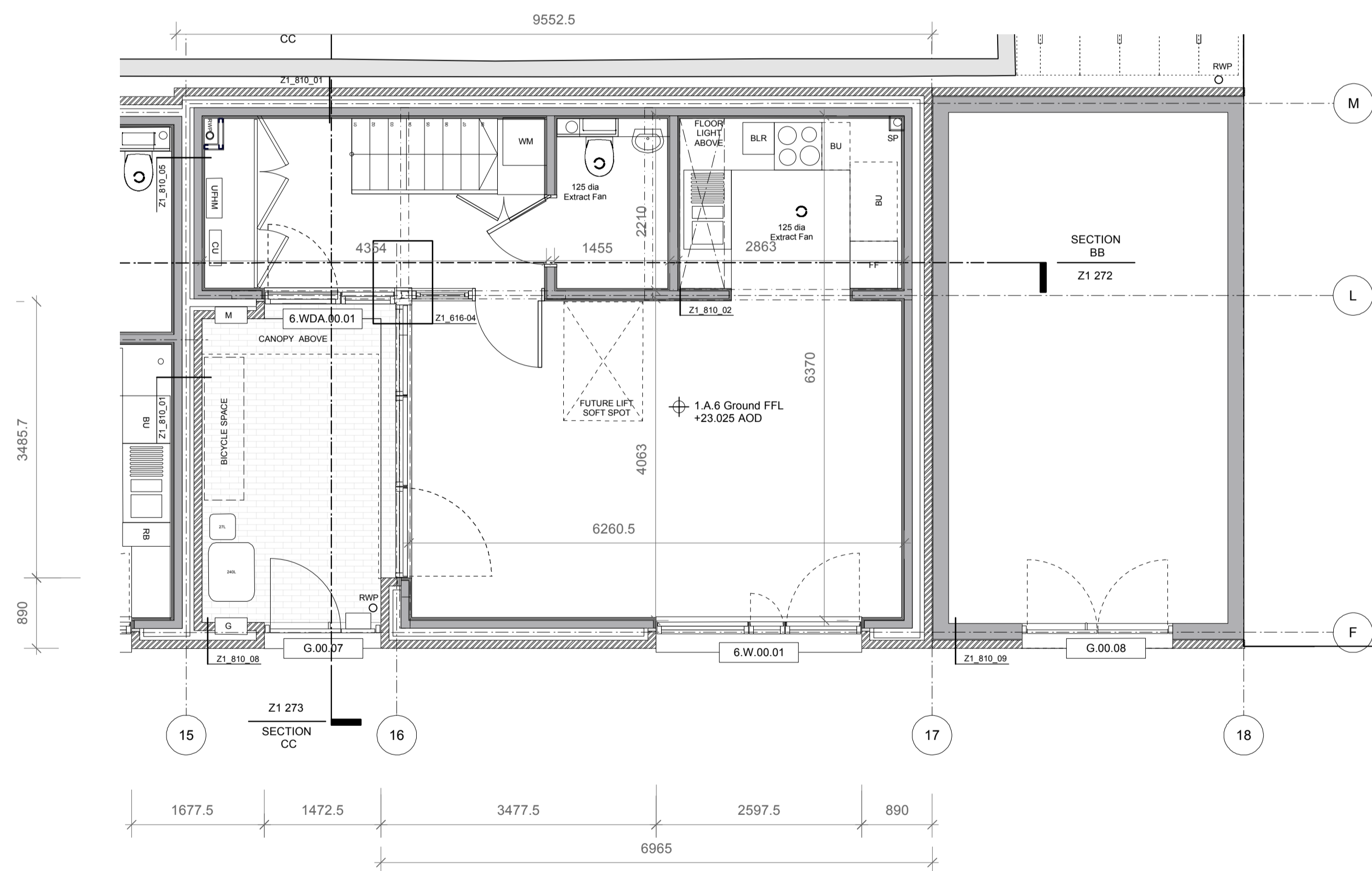


1.A.6 First Floor Plan



1.A.6 Roof Plan



1.A.6 Ground Floor Plan

Notes:

- 100mm Concrete blockwork to Structural Engineers Specification
- Structural timber joists to Structural Engineers Specification



NOTES
To be read in conjunction with:
1211_Z1-272 Mews Houses Section BB
1211_Z1-273 Mews Houses Section CC
1211_Z1-700 Mews Houses Window Schedule
1211_Z1-701 Mews Houses Entrance Door Schedule
1211_Z1-702 Mews Houses Gates/Roof Lights Schedule
1211_Z1-810 Mews Houses Typical Wall Build Ups
All external RWP's are 75mm diameter.

0m 0.5m 2.5m	
E	03.12.15 PACKAGE 3 ISSUED FOLLOWING CLIENT COMMENT & DEVELOPMENT
D	27.11.15 PACKAGE 4 TENDER ISSUE
C	17.11.15 GROUND FLOOR FFL LEVEL AMENDED
B	16.11.15 WINDOW, DOOR & ROOF LIGHTS REFERENCES ADDED FOR DOOR & WINDOW SCHEDULE PRELIMINARY ISSUE. WALL REFS ADDED.
A	12.11.15 ROOF PLAN UPDATED. EXISTING MEWS WALL SURVEY UPDATED. STEEL ADDED.
/	30.10.15 PACKAGE 3 TENDER ISSUE
REVISION	DATE AMENDMENT

DO NOT SCALE FROM THIS DRAWING. ALL DIMENSIONS TO BE CHECKED ON SITE BY THE CONTRACTOR AND SUCH DIMENSIONS TO BE HIS RESPONSIBILITY. REPORT ALL DRAWING ERRORS AND OMISSIONS TO THE ARCHITECT. ALL DIMENSIONS IN MILLIMETERS UNLESS NOTED OTHERWISE. IF IN DOUBT ASK CONTRACT ADMINISTRATOR.

mae
mae LLP
1 Naoraj Street, London, WC1X 0GB
Telephone 020 7704 6060
www.mae-llp.co.uk.com

job title
TYBALDS CLOSE ESTATE

drawing title
MEWS HOUSE UNIT 1.A.6 PLANS

status	TENDER	drawing no	revision
scale	1:50@A1	Z1-236	E
job no	1211		