

**SETTING OUT DATA :**

POINT	EASTING	NORTHING	DESCRIPTION
A01	526481.356	186002.798	TANGENT TO EXISTING
A02	526484.604	186005.651	TANGENT POINT
A03	526484.627	186006.137	END OF STRING
B01	526489.853	186001.758	TANGENT TO EXISTING
B02	526489.454	186002.230	TANGENT POINT
B03	526489.629	186006.070	END OF STRING
C01	526482.062	186003.601	CORNER OF TACTILE PAVING
C02	526482.209	186004.792	CORNER OF TACTILE PAVING
C03	526484.180	186004.550	CORNER OF TACTILE PAVING
C04	526483.253	186003.455	CORNER OF TACTILE PAVING
D01	526490.959	186003.717	CORNER OF TACTILE PAVING
D02	526489.767	186003.863	CORNER OF TACTILE PAVING
D03	526489.621	186002.672	CORNER OF TACTILE PAVING
D04	526490.812	186002.526	CORNER OF TACTILE PAVING

**SURVEY STATIONS DATA :**

POINT	EASTING	NORTHING	LEVEL
D1	526492.544	186002.367	111.466
D2	526456.613	185997.849	113.180
D3	526457.237	186014.458	115.728
D4	526460.232	186033.153	117.089
D5	526466.415	186042.398	119.899
D6	526473.890	186061.765	120.492
D7	526486.314	186060.853	120.415
D8	526484.234	186034.608	119.007
D9	526489.431	186011.184	115.731
D10	526493.856	186060.745	119.364
GPS	526521.060	185996.423	109.516

Rev	Details	Drawn	Checked	Date

PRELIMINARY

**NOTES :**

**GENERAL**

- Do not scale from this drawing.
- All dimensions are in metres, unless stated otherwise.
- All coordinates are based on the topographical survey stations information.
- This drawing to be read in conjunction with other contract drawings.
- This drawing to be read & printed in colour.

**CONSTRUCTION**

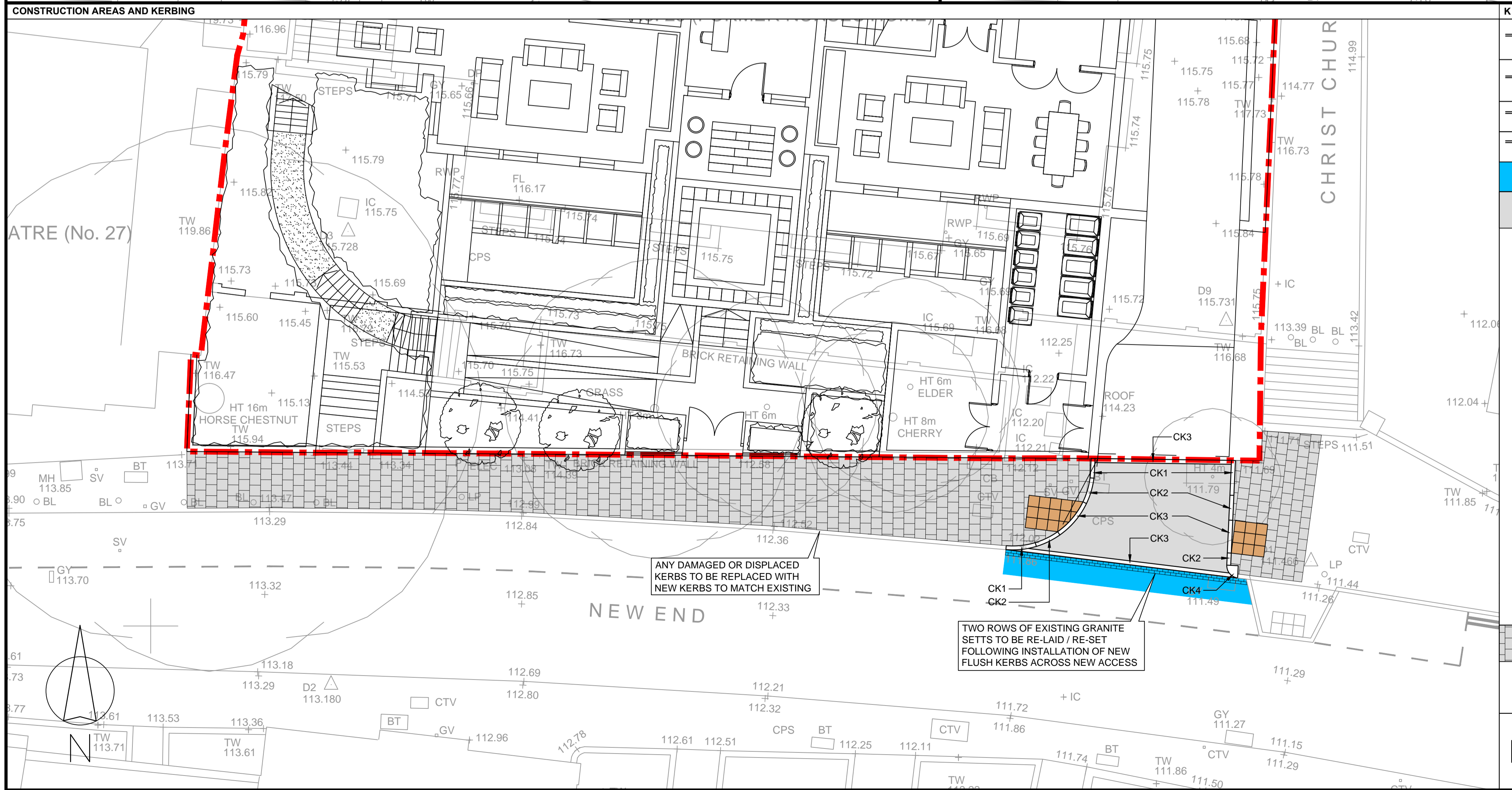
- Works shall comply with the current Department for Transport Specification for Highway Works and Suffolk CC "Specification for Estate Roads, May 2005".
- All street furniture to be set back from face of kerb 450mm minimum, including traffic signal heads.
- All road markings refer to the "Traffic Signs Regulations and General Directions 2002". Existing road markings to be replaced in coordination / as advised by Suffolk CC the Highway Authority.
- All tactile paving to be installed in accordance with the "Guidance on the use of Tactile Paving Surfaces".
- Contractor is to allow for the removal of all existing road markings affected by the works.
- Contractor is to ensure that all sign faces, whether re-used or new, are correctly handed for their intended position.
- All inspection covers / service valve covers to be raised / lowered to suit proposed levels.

**CDM (RISKS & HAZARDS)**

- Prior to commencement of construction the contractor is to liaise with all relevant statutory undertakers and protect / divert apparatus and to protect the workforce during the works. Any damage caused to the apparatus to be the responsibility of the contractor.
- Contractor to undertake their own statutory plant checks on site prior to the commencement of excavation exercise.
- The contractor is to make sure that any excavation should be adequately covered at night to protect both public and wildlife from becoming trapped.

**DISCLAIMERS**

- The topographical survey has been provided by RPS Group (drawing No. JKK4657-01 rev A), and TTP shall not be liable for any inaccuracies or deficiencies.
- The internal layout has been provided by KSR Architects (drawing No. NEN-PL-100), and TTP shall not be liable for any inaccuracies or deficiencies.



**KEY :**

CK1	PROPOSED 145x255x915mm CONSERVATION KERBS BY MARSHALLS (OR SIMILAR APPROVED), LAID WITH 125mm KERB FACE	
CK2	PROPOSED 145x255/145x915mm CONSERVATION LEFT HAND / RIGHT HAND DROP KERB BY MARSHALLS (OR SIMILAR APPROVED)	
CK3	PROPOSED 145x145x915mm CONSERVATION CENTRE STONE BY MARSHALLS (OR SIMILAR APPROVED), LAID FLUSH	
CK4	PROPOSED 455mmR CONSERVATION QUADRANT BY MARSHALLS (OR SIMILAR APPROVED)	
	PROPOSED CARRIAGEWAY STEP-JOINT DETAIL	
	EXISTING FOOTWAY TO BE BROKEN OUT AND NEW FULL DEPTH VEHICULAR ACCESS TO BE CONSTRUCTED:	
	<ul style="list-style-type: none"> <li><b>SURFACING COURSE (40mm):</b> HRA 30/14 C SURF 100/150 DES WITH 14 OR 20mm COATED CHIPPINGS 40/60 PSV 65 TO BS EN 13108-4 HOT ROLLED ASPHALT, or SMA COMPLIANT WITH BS EN 13108-5 STONE MASTIC ASPHALT;</li> <li><b>BINDER COURSE (60mm):</b> HRA 60/20 BIN 40/60 SAND TO BS EN 13108-4 HOT ROLLED ASPHALT, or AC 20 HDM BIN 40/60 REC B/S TO BS EN 13108-1 ASPHALT CONCRETE;</li> <li><b>BASE COURSE (200mm):</b> AC 32 HDM BASE 40/60 REC TO BS EN 13108-1 ASPHALT CONCRETE, or AC 32 DENSE BASE 40/60 REC TO BS EN 13108-1 ASPHALT CONCRETE;</li> <li><b>SUB-BASE (150mm):</b> TYPE 1 GRANULAR MATERIAL TO THE SPECIFICATION OF HIGHWAY WORKS, CLAUSE 803. FOR CBR VALUES LESS THAN 15% AN ADDITIONAL CAPPING LAYER IS REQUIRED. GEOTEXTILE MEMBRANE MAY BE NECESSARY BETWEEN SUB-BASE AND CAPPING LAYER.</li> </ul>	
	NOTE: Typical road construction CBR = 5%	
	<b>TABLE OF SUB-BASE THICKNESSES :</b>	
CBR VALUE	SUB-BASE THICKNESS	CAPPING LAYER THICKNESS
>15%	150mm	-
5 - 15%	150mm	250mm
2 - 5%	150mm	450mm
1 - 2%	150mm	600mm
	NOTE: 450mm min. thickness construction if subgrade frost susceptible	
	EXISTING PCC SLABS TO BE REMOVED AND DISPOSED OF TO A LICENSED TIP, AND REPLACED WITH NEW 750x600x63mm YORKSTONE FLAGS, COLOUR TO MATCH EXISTING, LAID IN A 150mm STAGGERED BOND 90° TO KERB LINE ON 30mm CEMENT MORTAR BEDDING (1:6 CEMENT/SNAD). (Please also refer to Section 3 of the "Camden Streetscape Design Manual" for further information)	
	PROPOSED 400x400x50mm BLISTER CONCRETE TACTILE PAVING SLABS BY MARSHALLS (OR SIMILAR APPROVED), COLOUR BUFF, LAID ON 30mm CEMENT MORTAR BEDDING (1:6 CEMENT/SNAD) (Please also refer to Section 3 of the "Camden Streetscape Design Manual" for further information)	

Client

LINTON

Project

29 New End

Drawing Title

S278 Highway Works  
Engineering Layout

Scale	Size
1:100	A1

Drawn	Checked	Date
DW	BS	18.12.2015

ttp consulting

transport planning specialists

111 - 113 Great Portland Street  
London  
W1W 6QQ  
Tel. No. 0207 1000 753

Drawing Number

2015-2668-DD-200

Rev