
Tune Hotel Gray's Inn Road, Kings Cross

Material study

January 2016



Henry Branch's proposal for Swinton House and 76-78 Swinton Street, 1921

Contents

-
- 1.0 Standing seam cladding precedents**
 - 2.0 Perforated metal mesh precedents**

Proposed Swinton Street view



Standing seam roof extension



1



2



3



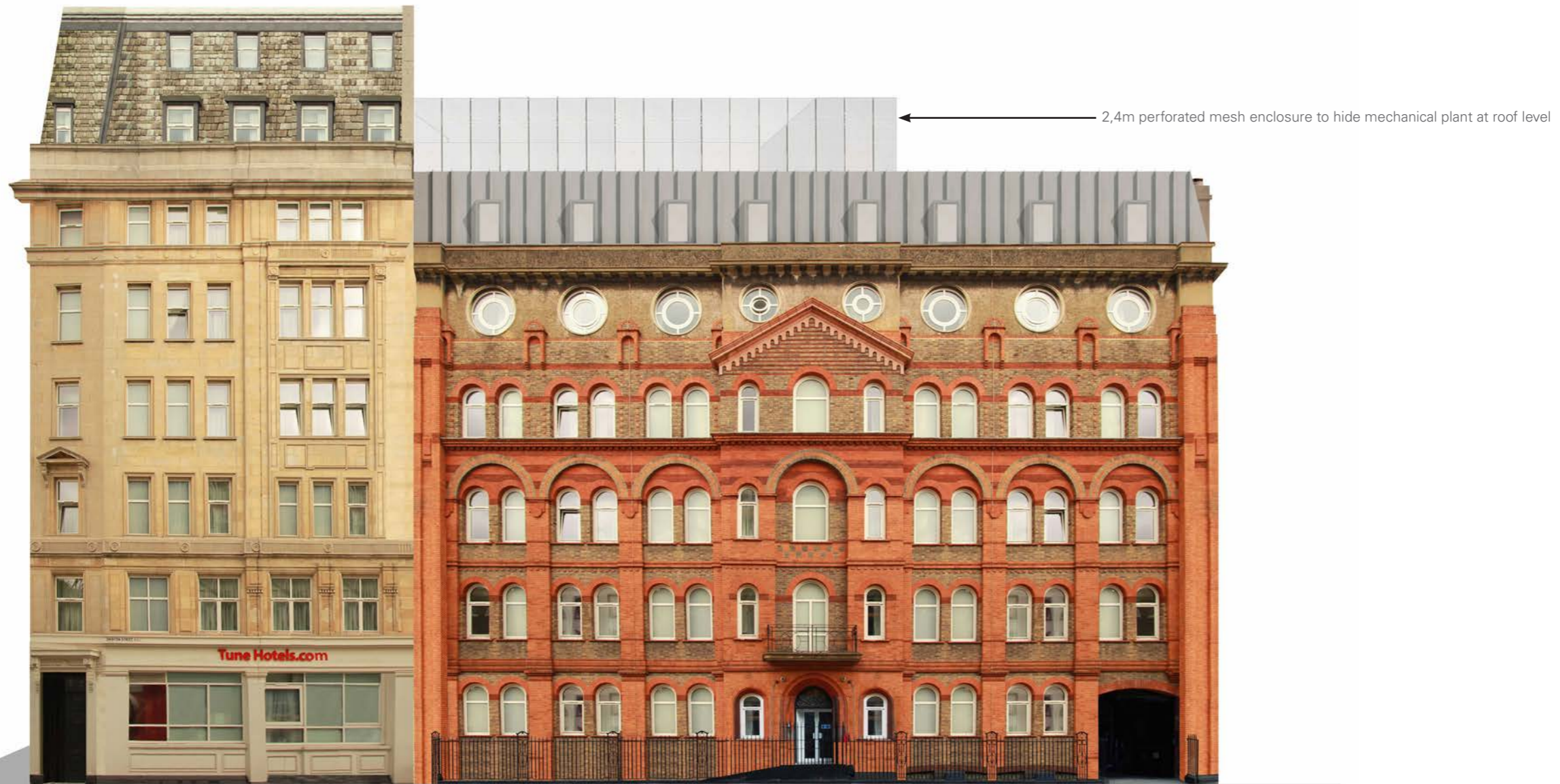
4

01. Standing seam zinc cladding precedents

The illustrations (left) show examples of contemporary buildings clad in standing seam zinc.

- 1 Residence factory by de Alzua+ in Lille
- 2 Mantilla road in London by Emulsion Architecture
- 3 Standing seam roof extension in King's Cross, London (architect unknown)
- 4 Stoke Newington road in London by Waugh Thistleton Architects

Proposed Swinton Street Elevation looking North





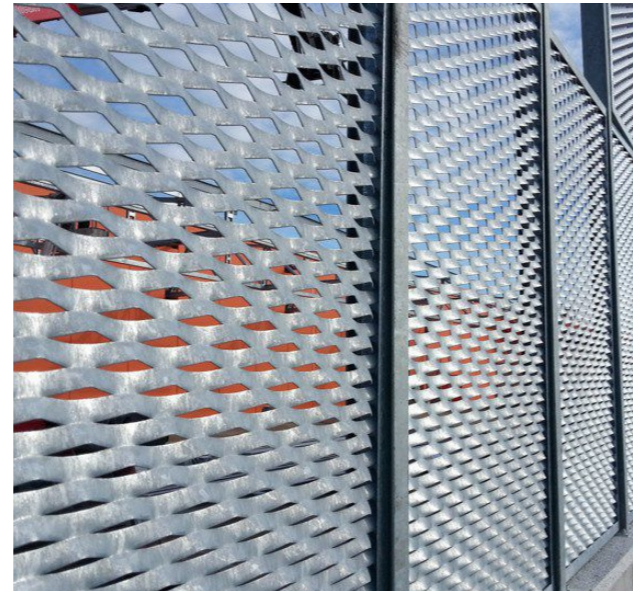
1



2



3



02. Perforated metal mesh precedents

The illustrations (left) show examples of perforated metal mesh enclosures to create tidied building shape

1 IES cap norfeu extension, Spain, by Javier de las heras sole + bosch tarrus arquitectes

2 Police station in Xixona, Spain, by Daniel Marti and Natalia Ferrer

3 Perforated metal enclosures precedents

