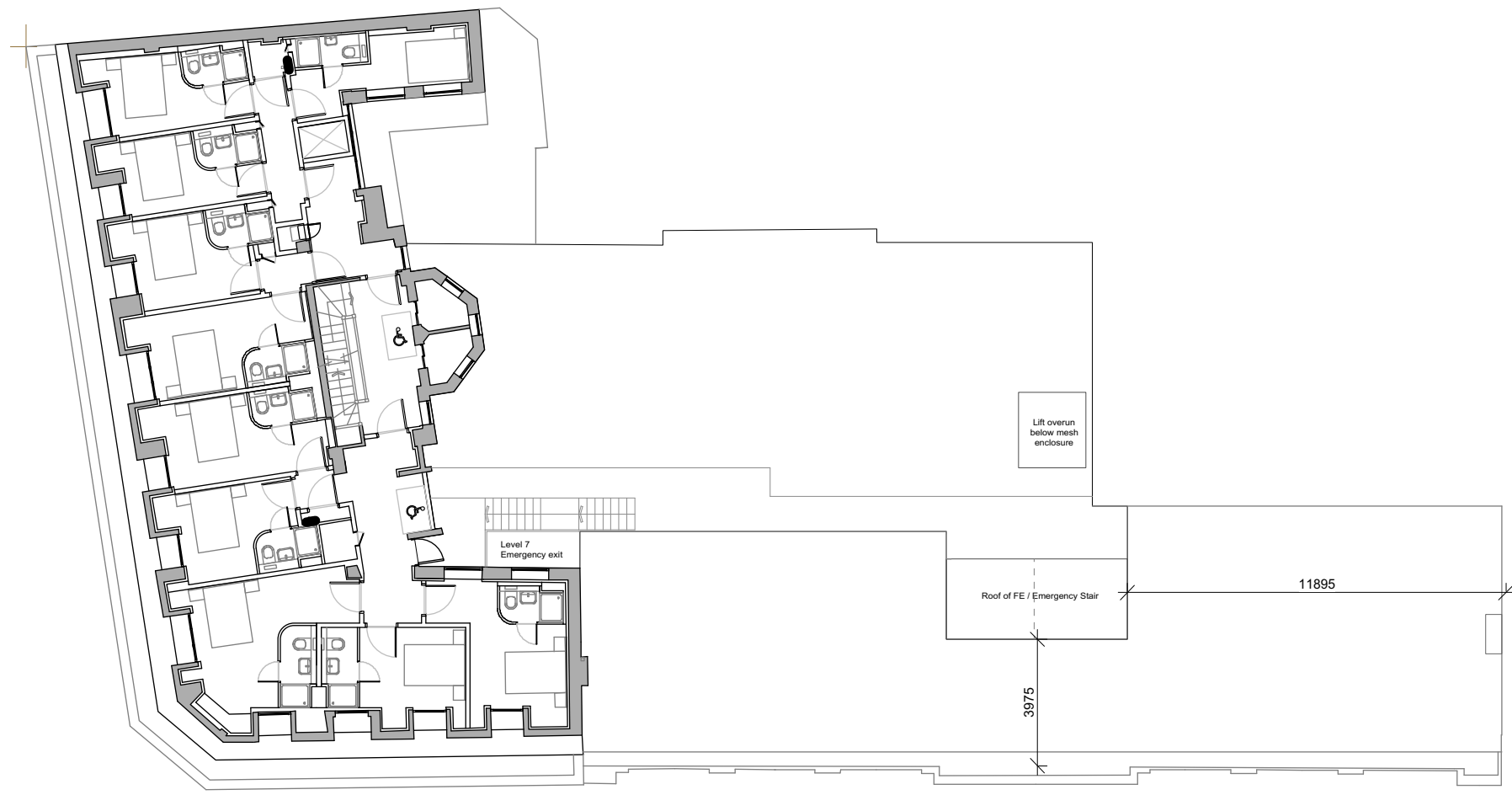


This drawing is prepared for the purposes of a planning application and to show design intent only. The information contained herein must not be used for costing, construction, engineering or any other purposes without agreement in writing from Waugh Thistleton Architects Ltd.

NOTES



1
108

PROPOSED SEVENTH FLOOR PLAN



REV	COMMENTS	DATE	CHK
1	Alteration to roof level mesh plant enclosure	25/1/16	TW

STATUS

PLANNING

Job Grays Inn (Tune Hotels)
Kings Cross
Title Proposed Seventh Floor Plan
Date January 2016
Scale 1:100 @ A1 / 1:200 @ A3
Drawn CK
Checked TW

1_517-00-118

Waugh Thistleton
Architects Ltd
77 Leonard Street
London EC2A 4NA
Telephone
+44 (0)20 7613 5727
Fax
+44 (0)20 7613 5749
email/web
waughthistleton.com

architects
**Waugh
Thistleton**