

**Section AA**  
 Unit 3.3 - Eastern End

**Section AA**  
 Unit 3.3 & 3.2 Party Wall

**Section AA**  
 Unit 3.2 & 3.1 Party Wall Unit 3.1

0 1m 2.5m

T1	02.11.15	TS	CB
Issued for tender			
Revision	Date	By	Checked

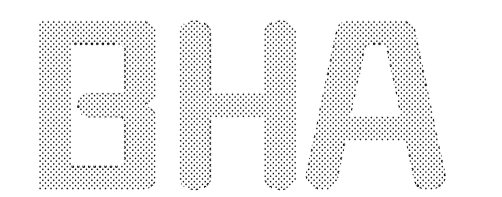
For Tender

**Site 3 - Boiler House**  
**Section AA**

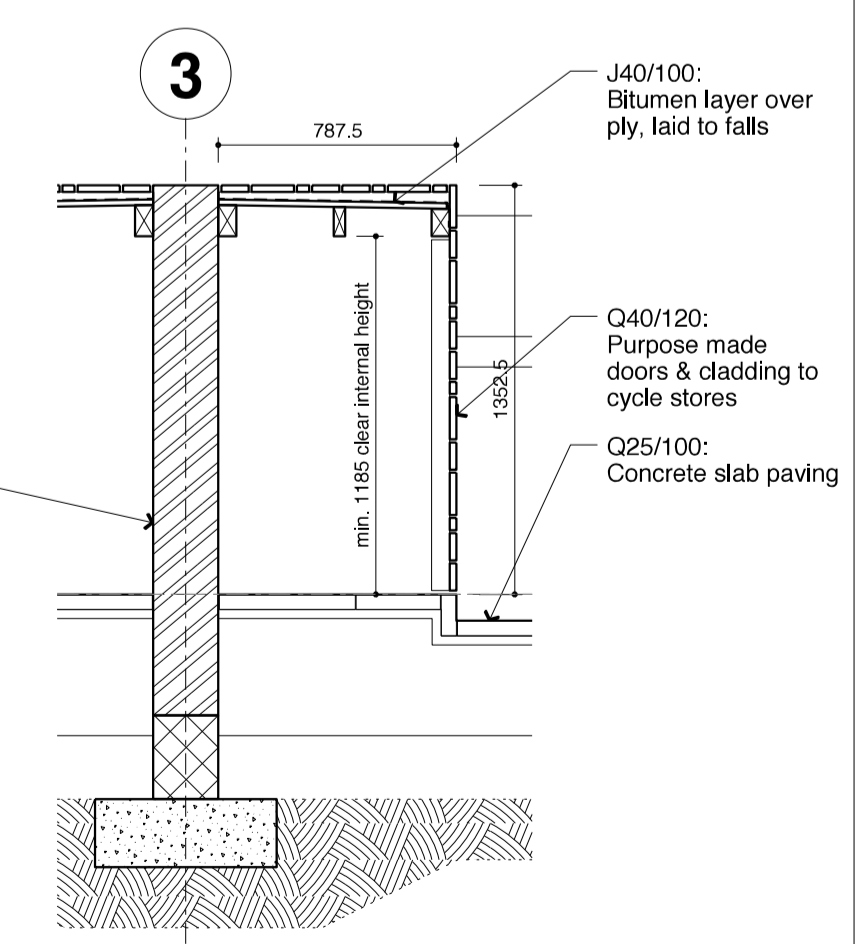
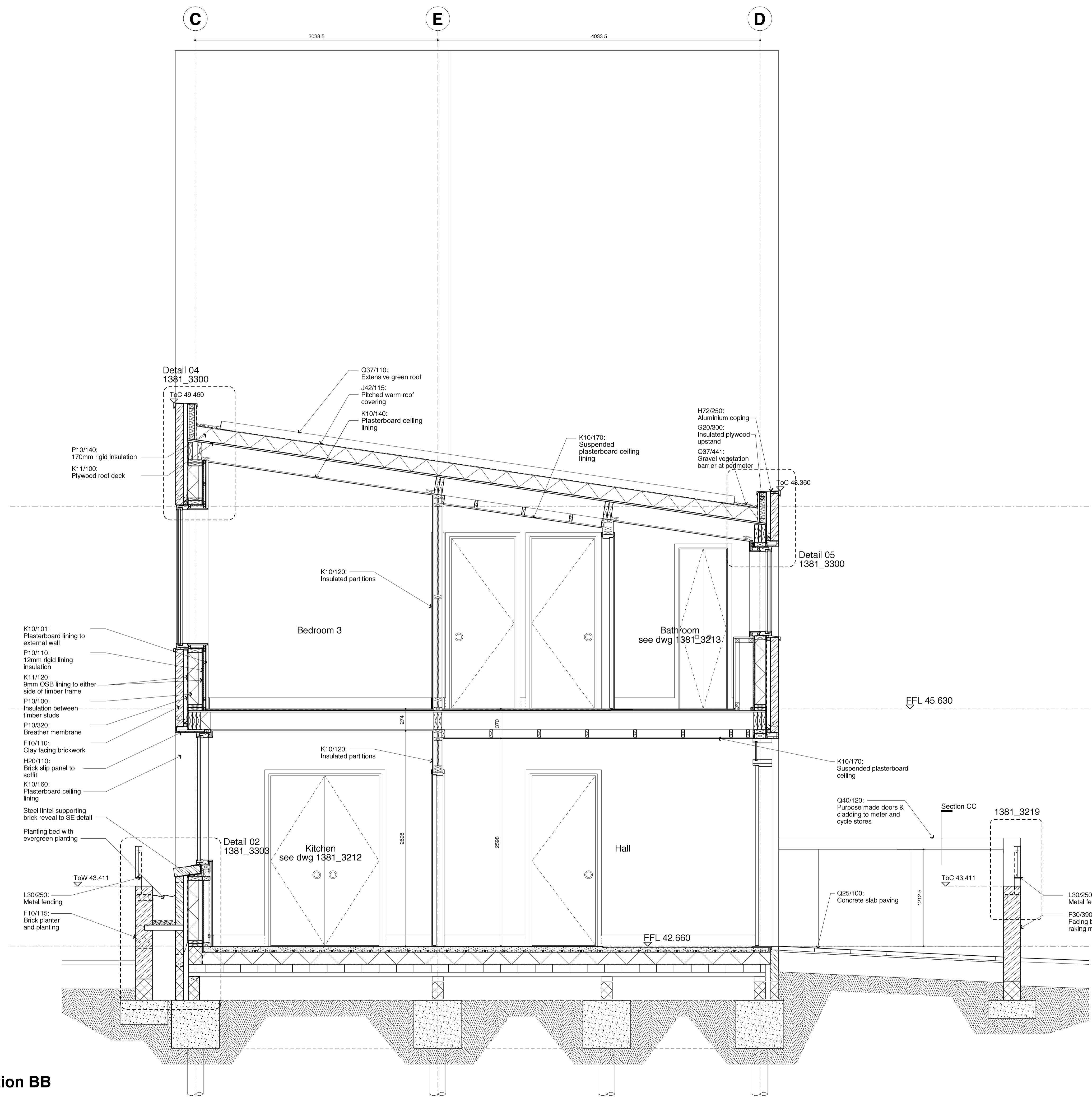
Barrington & Lambie Infill Sites

**1381\_3200\_T1**

Scale: 1:25 at A1  
 1:50 at A3  
 Date: 19.01.15  
 Drawn: TS



**BURD HAWARD ARCHITECTS LTD**  
 United House, North Road  
 London N7 9DP  
 T +44 20 7267 9815  
 E studio@burdward.com



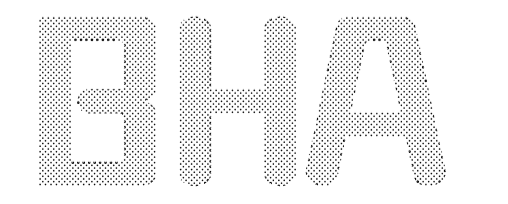
T1	02.11.15	TS	CB
Issued for tender			
Revision	Date	By	Checked

For Tender

**Site 3 - Boiler House Section BB**  
 Barrington & Lambie Infill Sites

**1381\_3201\_T1**

Scale: 1:25 at A1  
 1:50 at A3  
 Date: 19.01.15  
 Drawn: TS

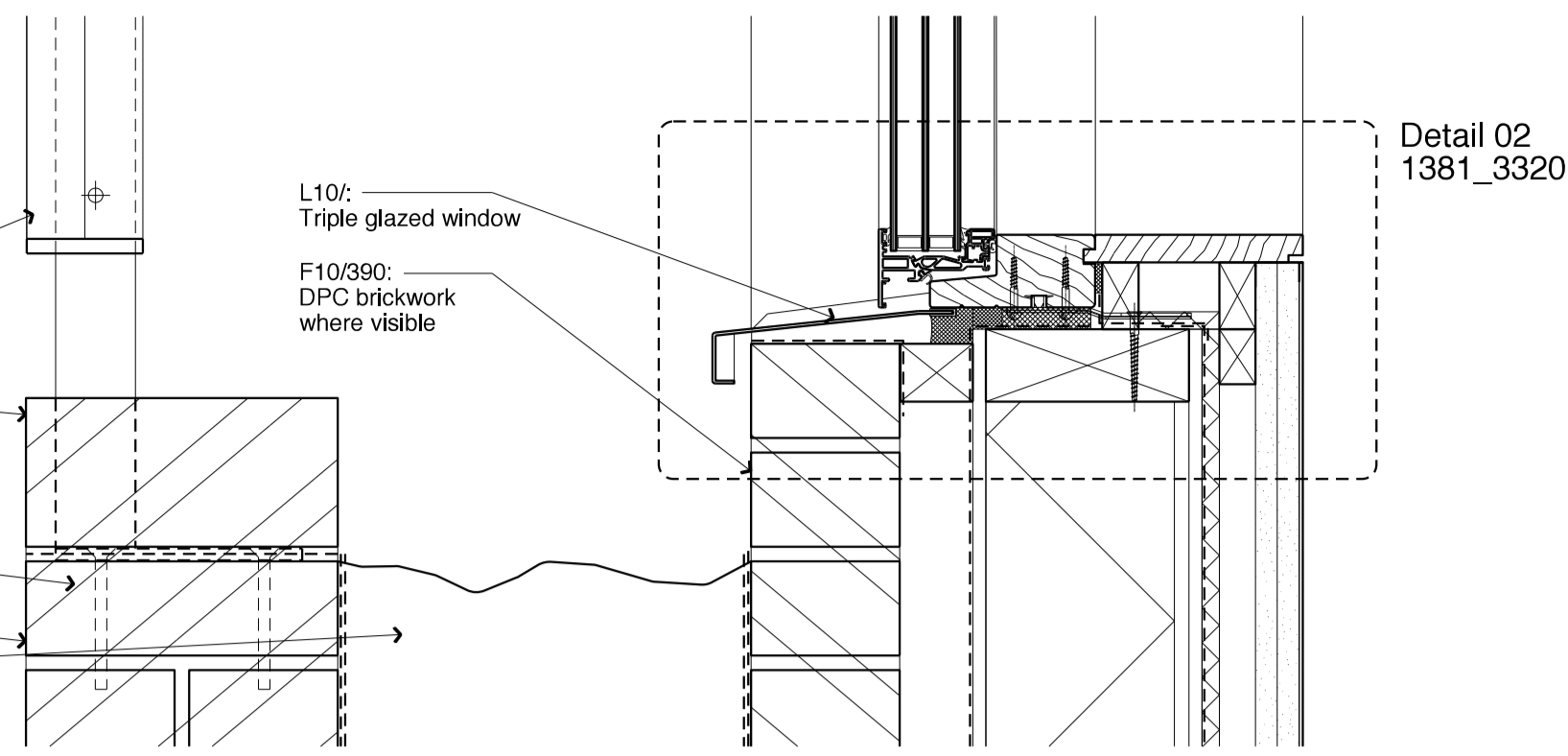


**BURD HAWARD ARCHITECTS LTD**  
 United House, North Road  
 London N7 9DP  
 T +44 20 7267 9815  
 E studio@burdward.com

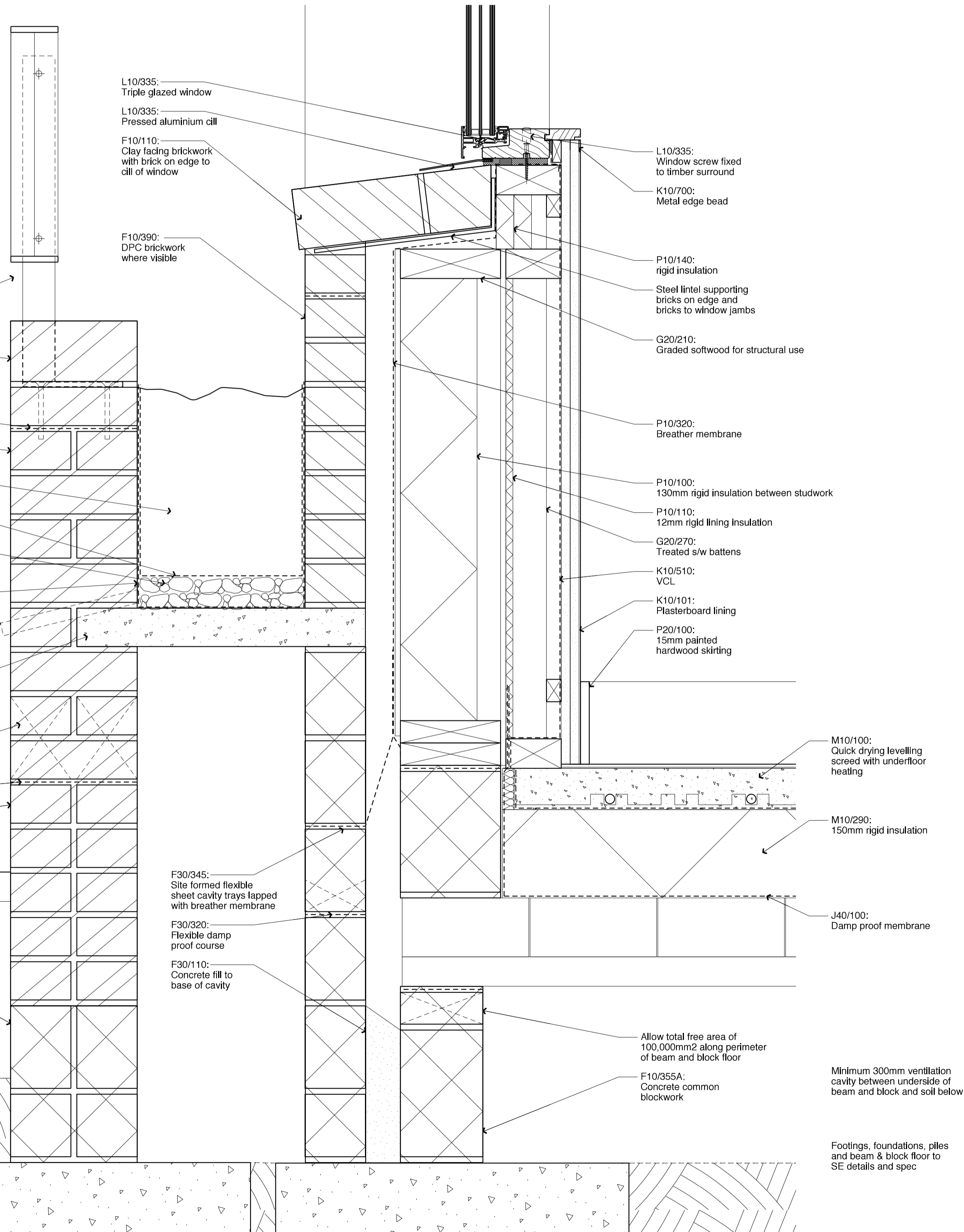
**Section BB**

**Section CC**





**Detail 01**  
 External planter to Unit 3



**Detail 02**  
 External planter to south elevation (railway path)

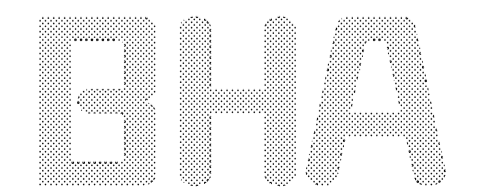
T1	02.11.15	TS	CB
Issued for Tender			
Revision	Date	By	Checked

For Tender

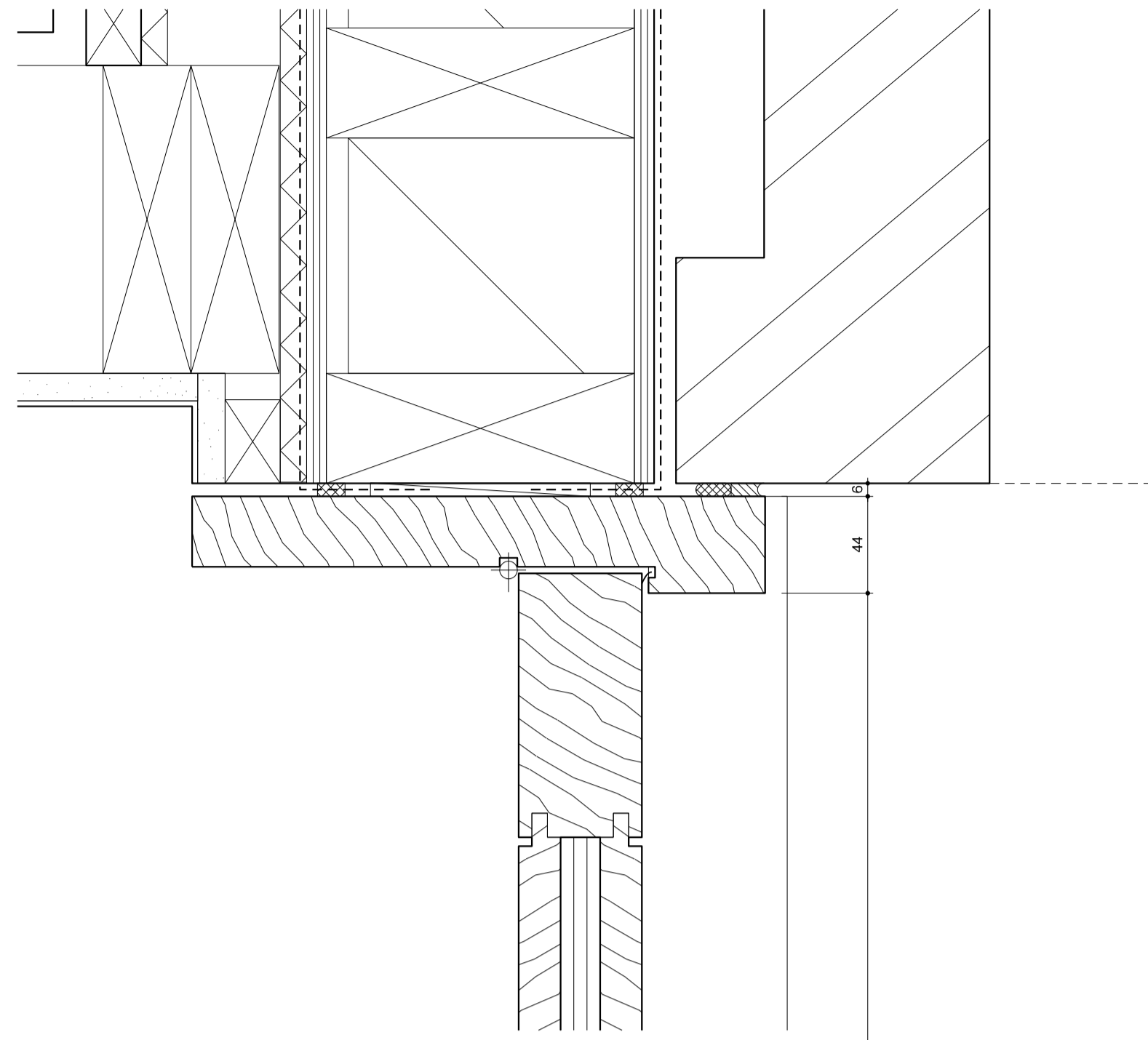
**Site 3 - Boiler House**  
**External Wall Details 04**  
 Barrington & Lambie Infill Sites

**1381\_3303\_T1**

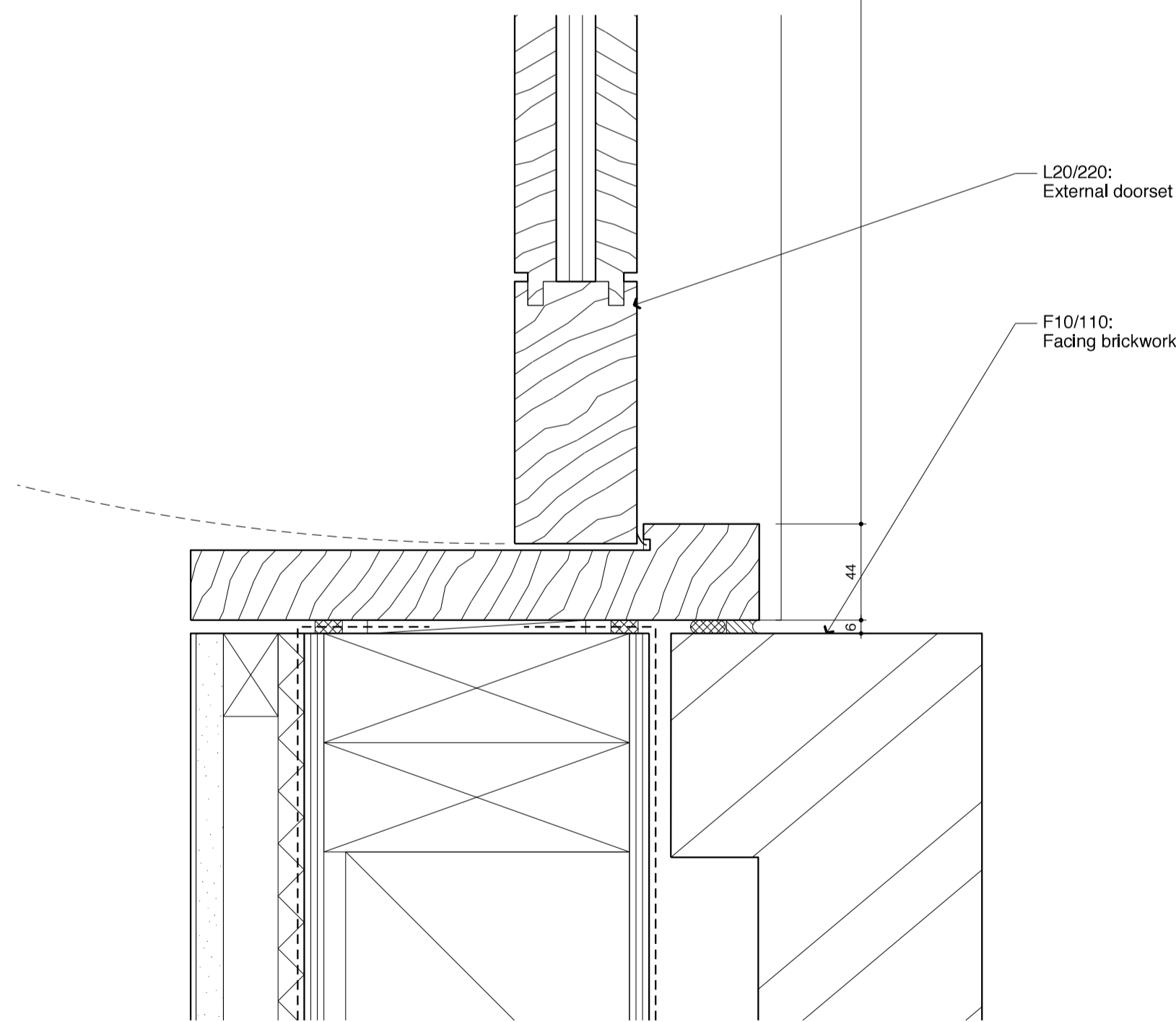
Scale: 1:5 at A1  
 1:10 at A3  
 Date: 19.01.15  
 Drawn: TS



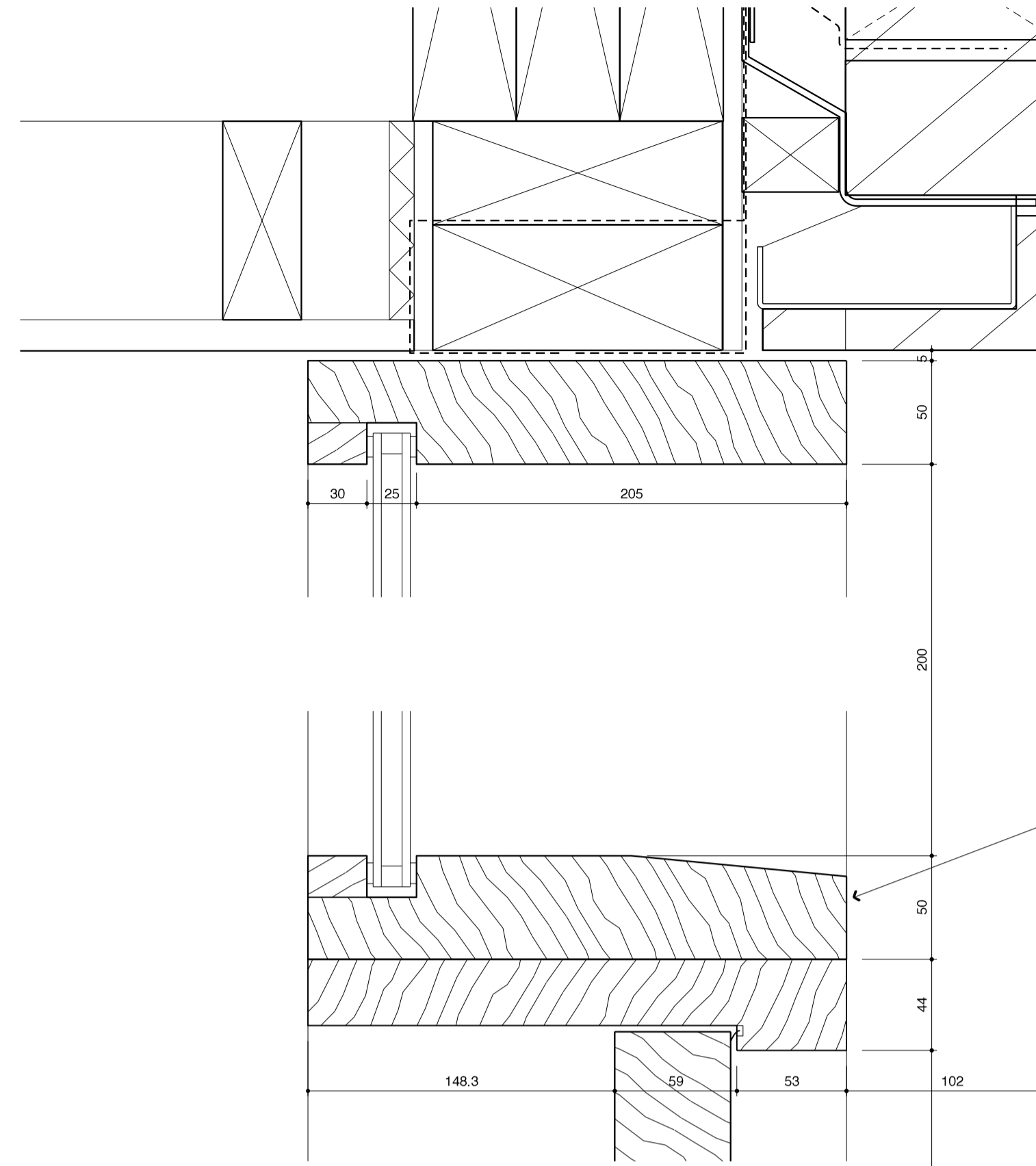
**BURD HAWARD ARCHITECTS LTD**  
 United House, North Road  
 London N7 9DP  
 T +44 20 7267 9815  
 E studio@burdhaward.com



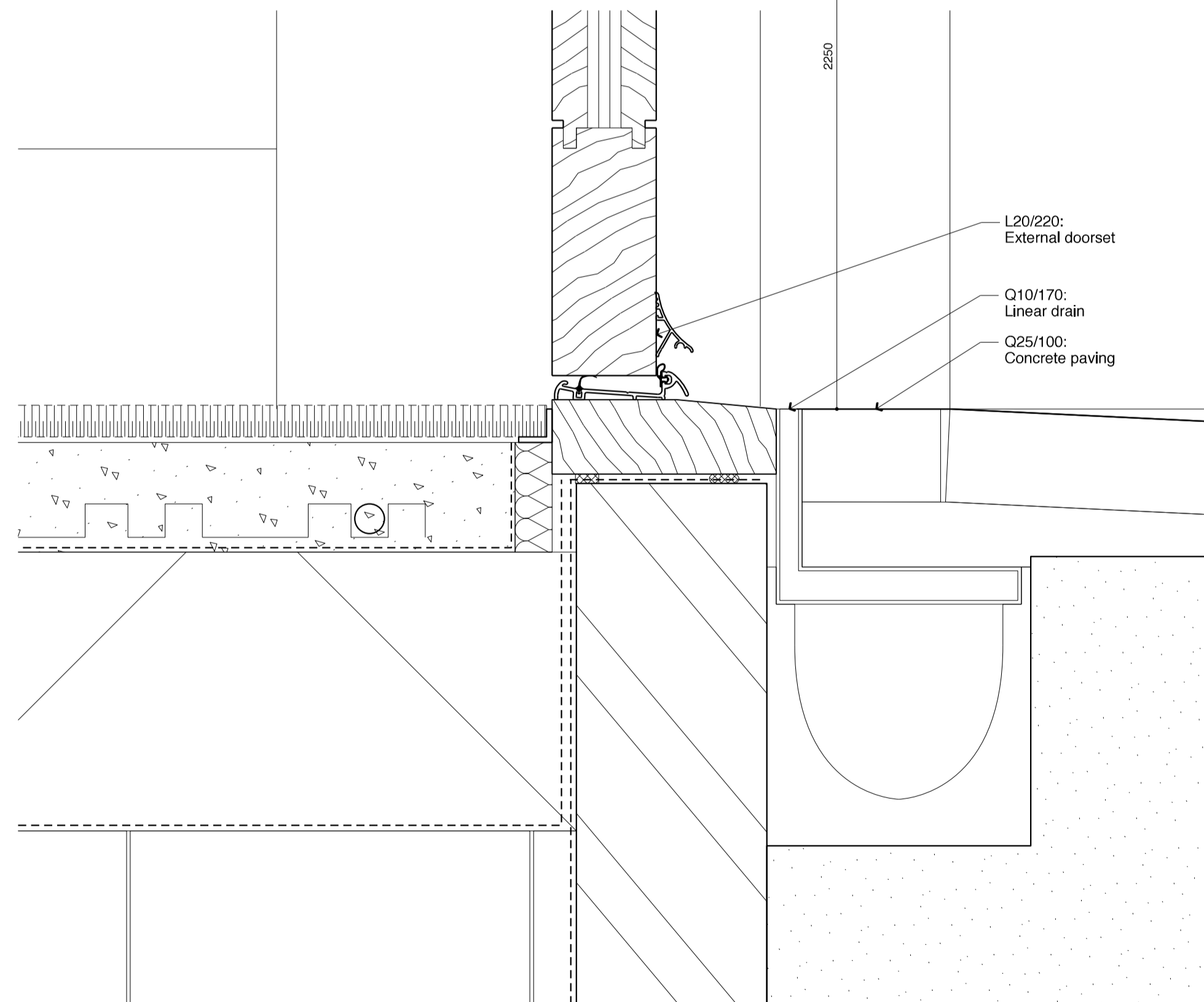
**Detail 1**  
 External timber entrance door jamb detail



**Detail 2**  
 External timber entrance door jamb detail



**Detail 3**  
 External timber entrance door head detail



**Detail 4**  
 External timber entrance door cill detail

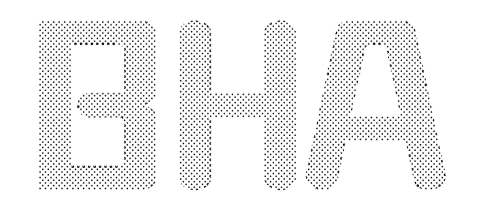
T1	02.11.15	NI	
Issued for Tender			
Revision	Date	By	Checked

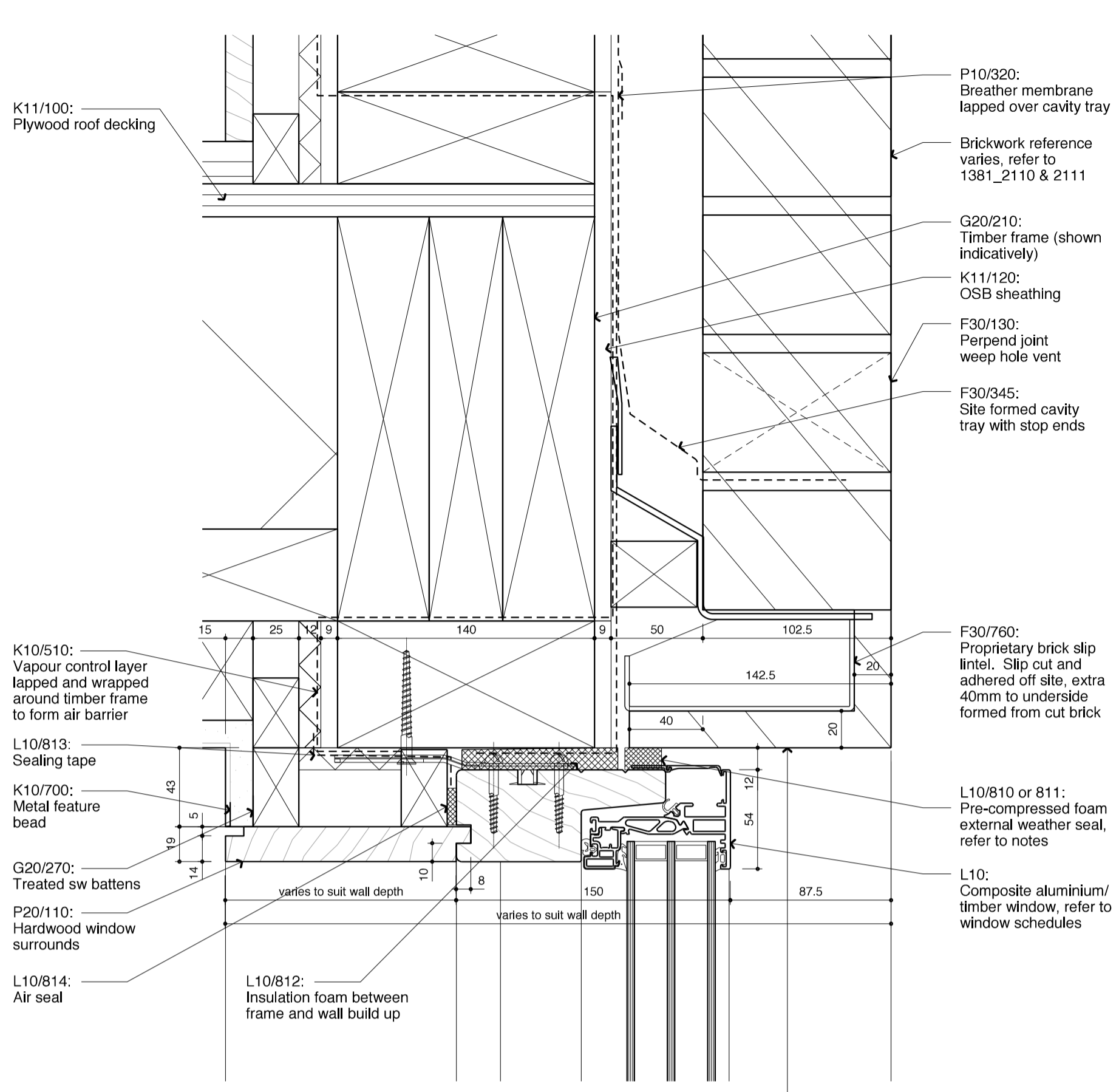
For Tender

**Site 3 - Boiler House**  
**External Door Details\_01**  
 Barrington & Lamble Infill Sites

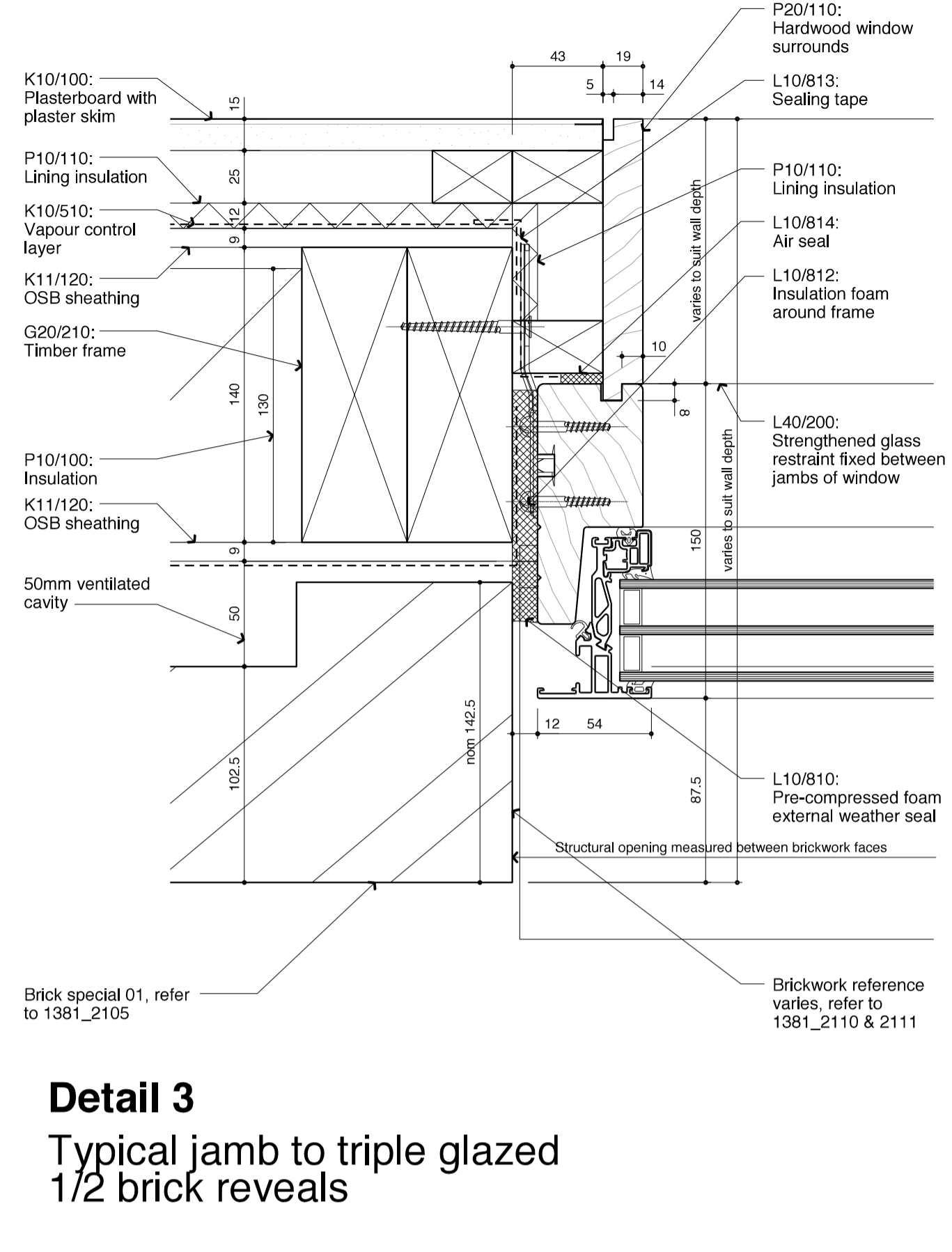
**1381\_3315\_T1**

Scale: 1:2.5 at A1  
 1:5 at A3  
 Date: 13.07.15  
 Drawn: TS

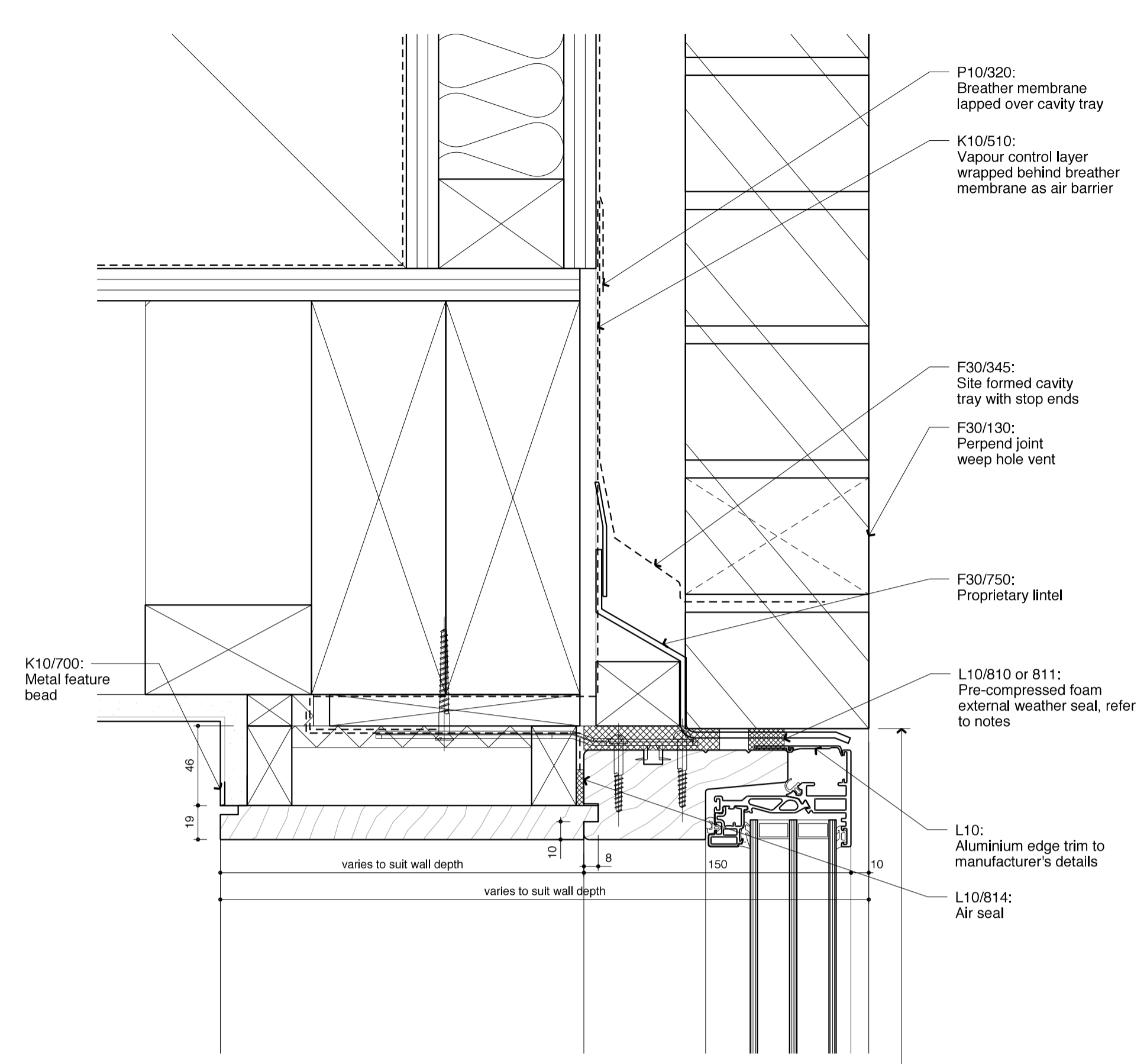




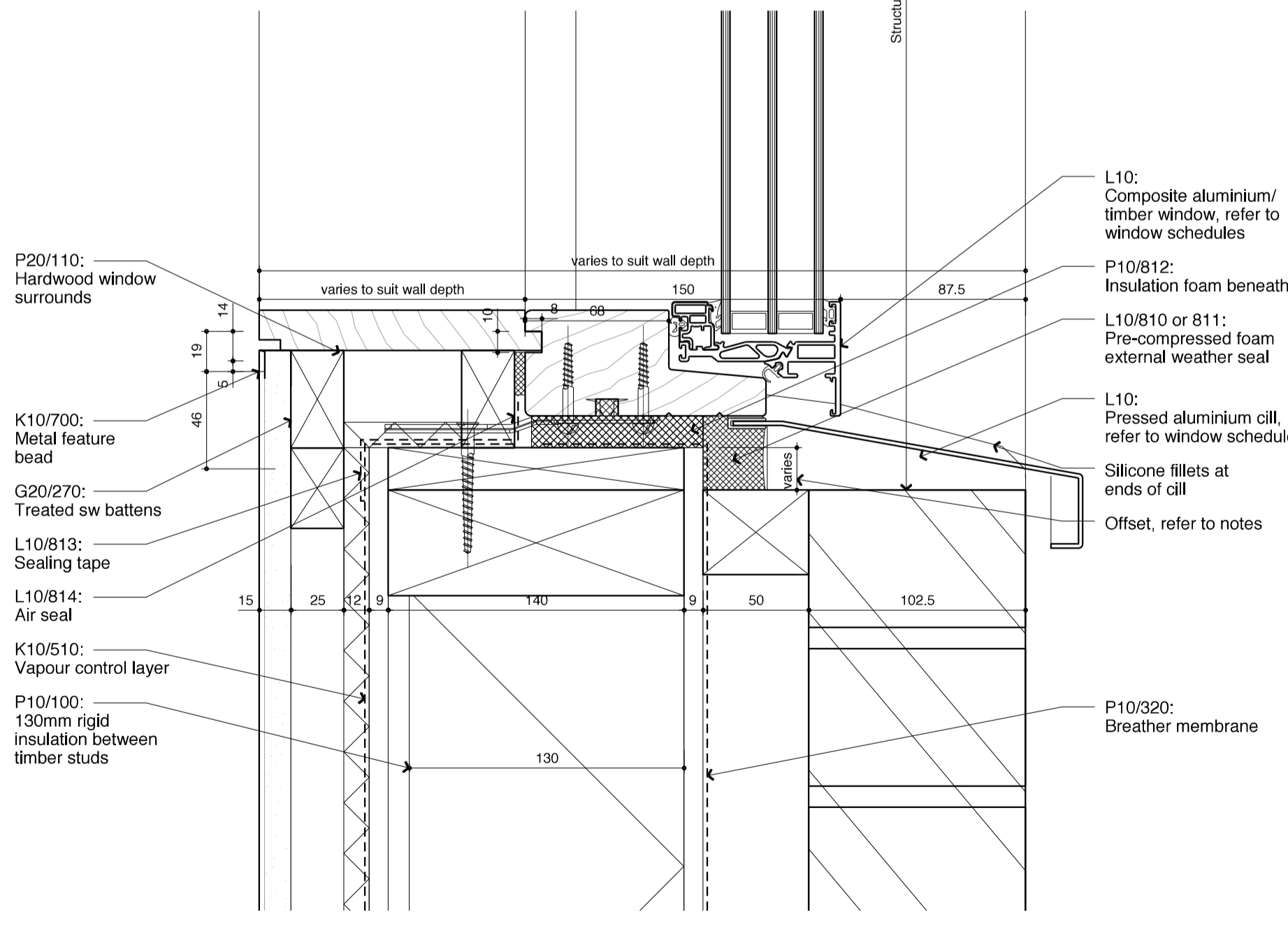
**Detail 1**  
 Typical head to triple glazed 1/2 brick reveals



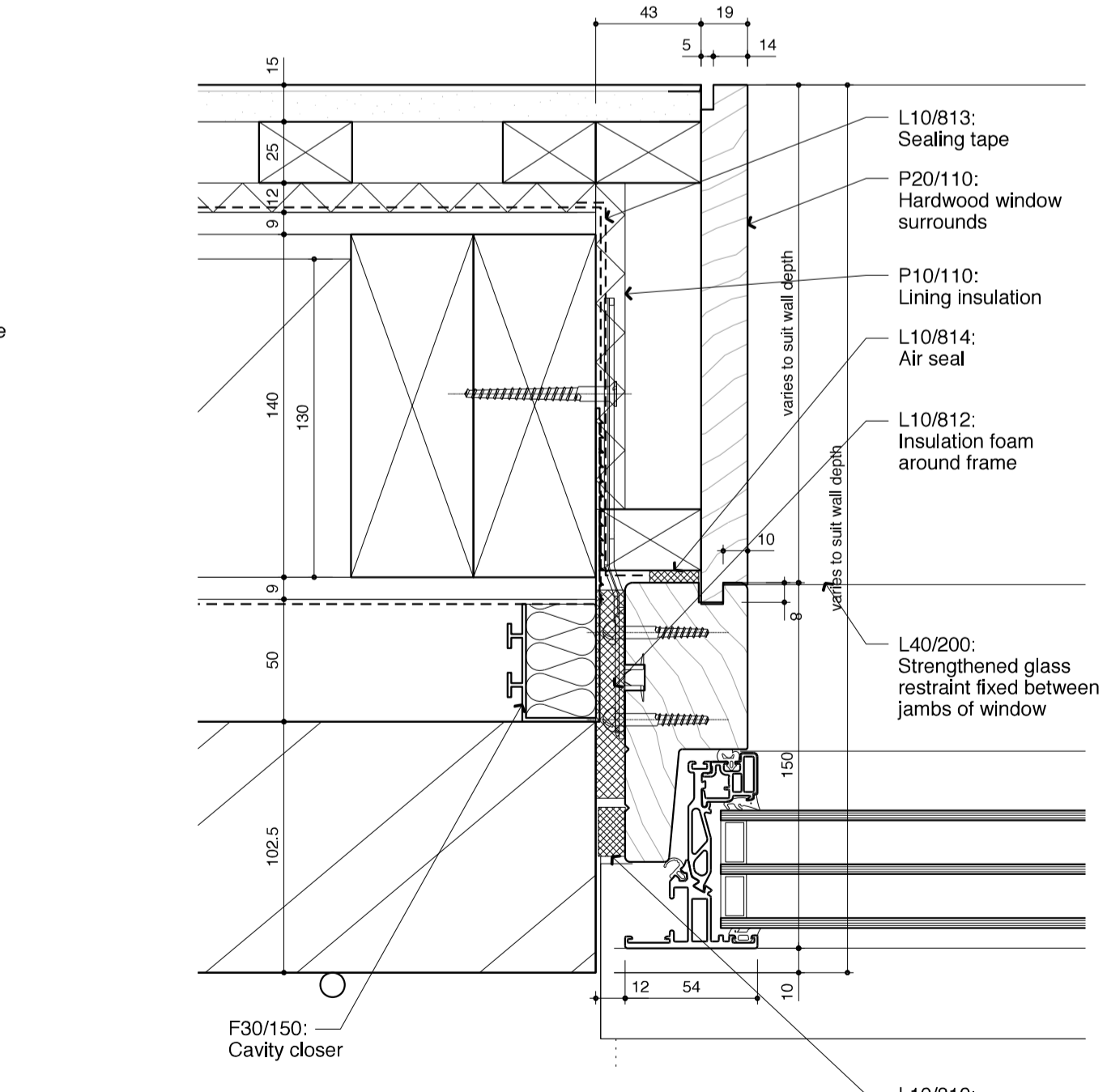
**Detail 3**  
 Typical jamb to triple glazed 1/2 brick reveals



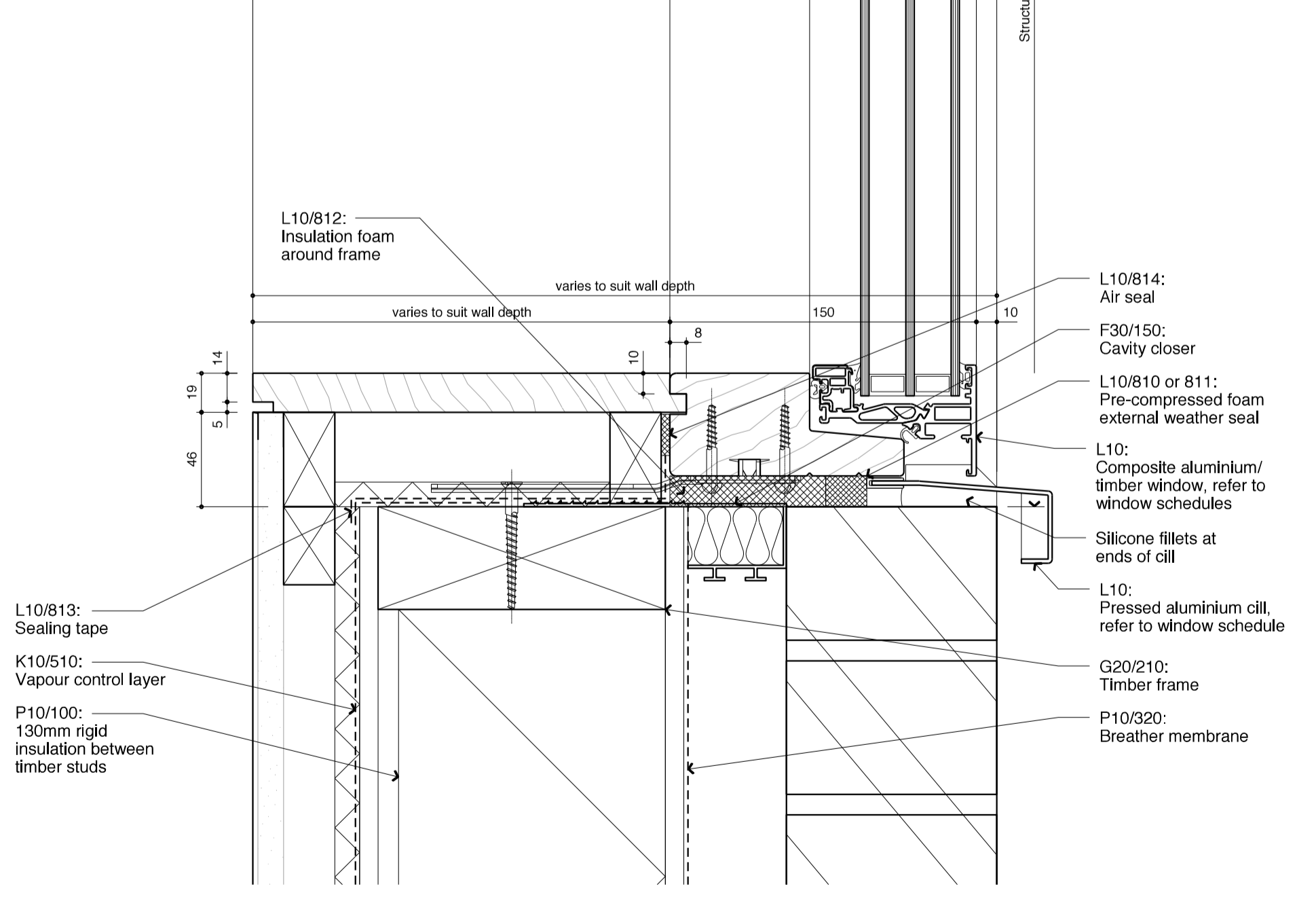
**Detail 5**  
 Typical head to triple glazed flush reveals



**Detail 2**  
 Typical cill to triple glazed 1/2 brick reveals NB W3/32, 36 & 37 hardwood cill joins to laminate panel



**Detail 4**  
 Typical jamb to triple glazed flush reveals



**Detail 6**  
 Typical cill to triple glazed flush reveals

**Notes:**

**Differential movement:**  
 In order to accommodate the differential movement of the timber frame the following allowances are to be made:

**Recessed window cills:**  
 Offset between the structural cill and the brickwork cill will be as follows:  
 GF - Timber cill 10mm above brickwork cill  
 FF - Timber cill 20mm above brickwork cill  
 SF - Timber cill 30mm above brickwork cill  
 TF - Timber cill 40mm above brickwork cill

**Flush window cills:**  
 Offset between the structural cill and the brickwork cill will be as follows:  
 GF - Align cills  
 FF - Timber cill 10mm above brickwork cill  
 SF - Timber cill 20mm above brickwork cill  
 TF - Timber cill 30mm above brickwork cill

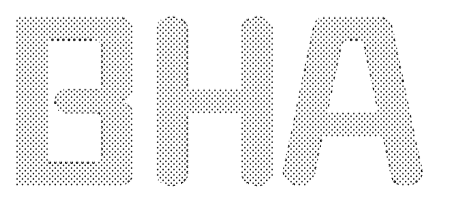
**Window Heads:**  
 Ensure that correct expansion foam (L10/810 or 811) is used to accommodate movement as follows:  
 GF - 3mm L10/810  
 FF - 10mm L10/811  
 SF - 20mm L10/811  
 TF - 30mm L10/811

T1	02.11.15	TS	CB
Issued for tender			
Revision	Date	By	Checked

For Tender

**Site 3 - Boiler House Window Details Sheet 01**  
 Barrington & Lamble Infill Sites  
**1381\_3320\_T1**

Scale: 1:2.5 at A1  
 1:5 at A3  
 Date: 13.07.15  
 Drawn: TS



**BURD HAWARD ARCHITECTS LTD**  
 United House, North Road  
 London N7 9DP  
 T +44 20 7267 9815  
 E studio@burdward.com

