

Section AA

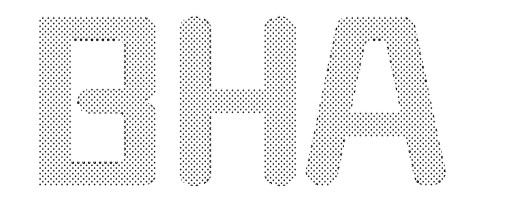
| | | | |
|-------------------|----------|----|---------|
| T1 | 02.11.15 | TS | CB |
| Issued for tender | | | |
| Revision | Date | By | Checked |

For Tender

**Site 1 - Corner Lamble St
 Section AA**
 Barrington & Lamble Infill Sites

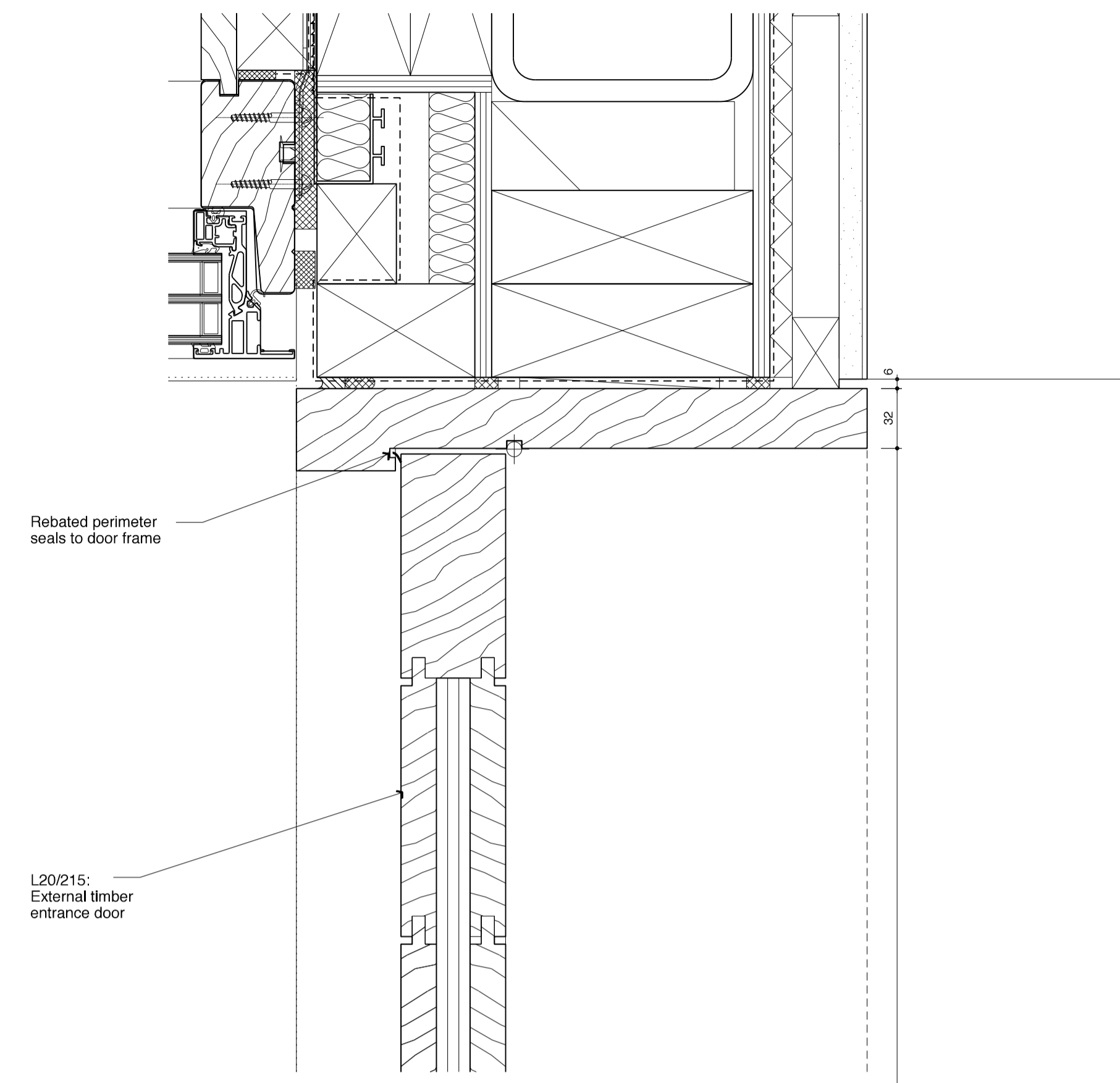
1381_1200_T1

Scale: 1:25 at A1
 1:50 at A3
 Date: 15.01.15
 Drawn: TS

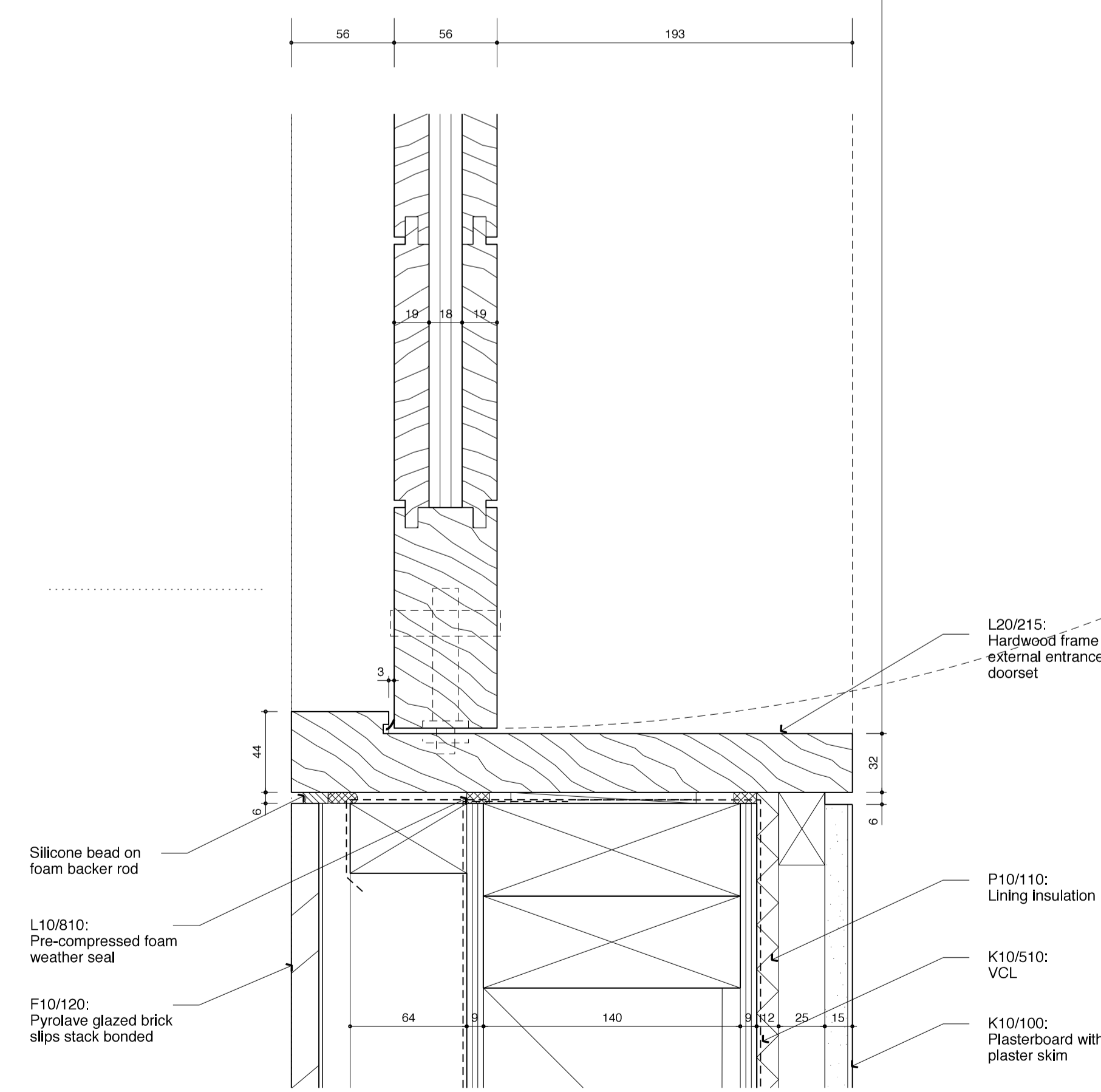


BURD HAWARD ARCHITECTS LTD
 United House, North Road
 London N7 9DP
 T +44 20 7267 9815
 E studio@burdhaward.com

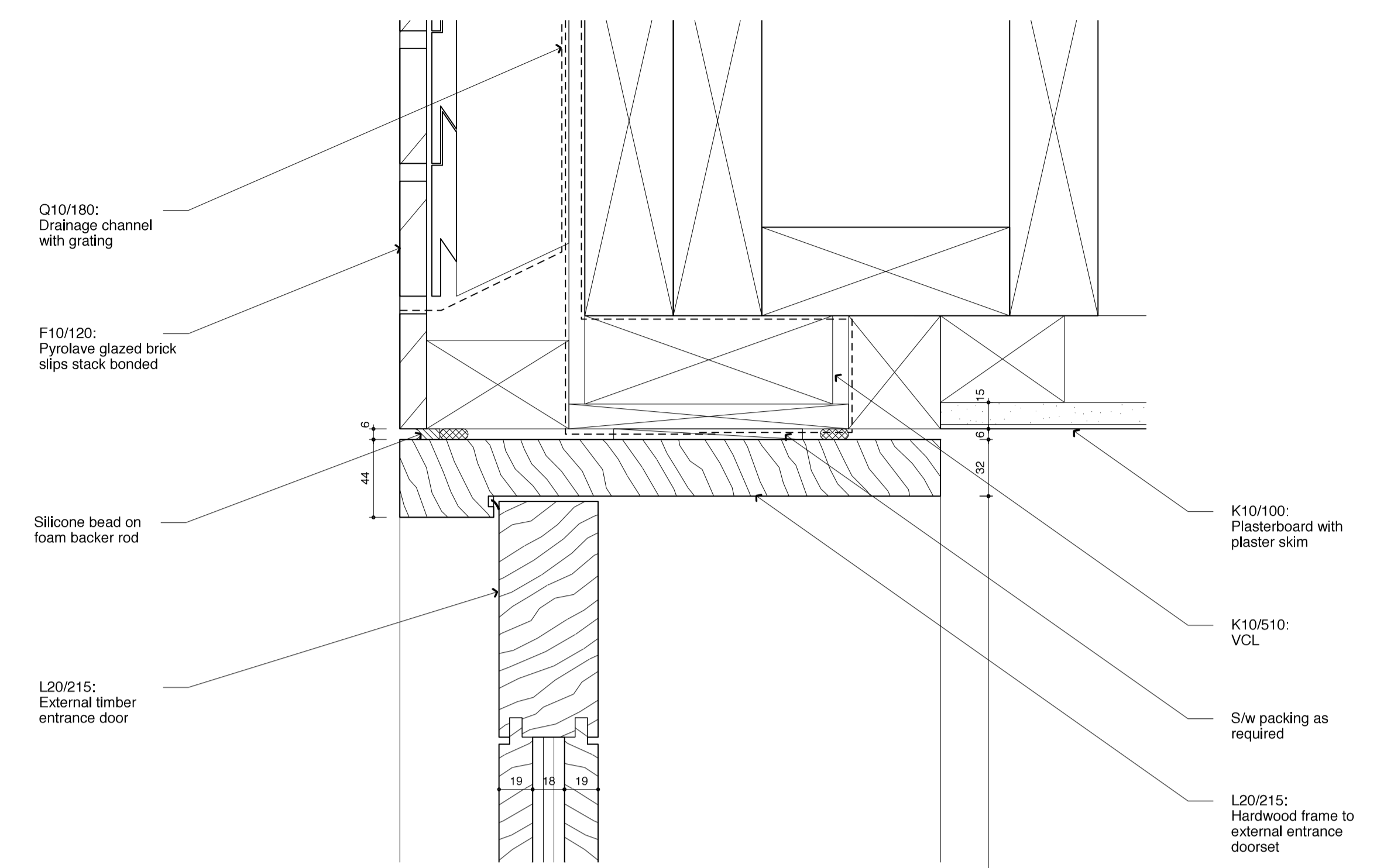




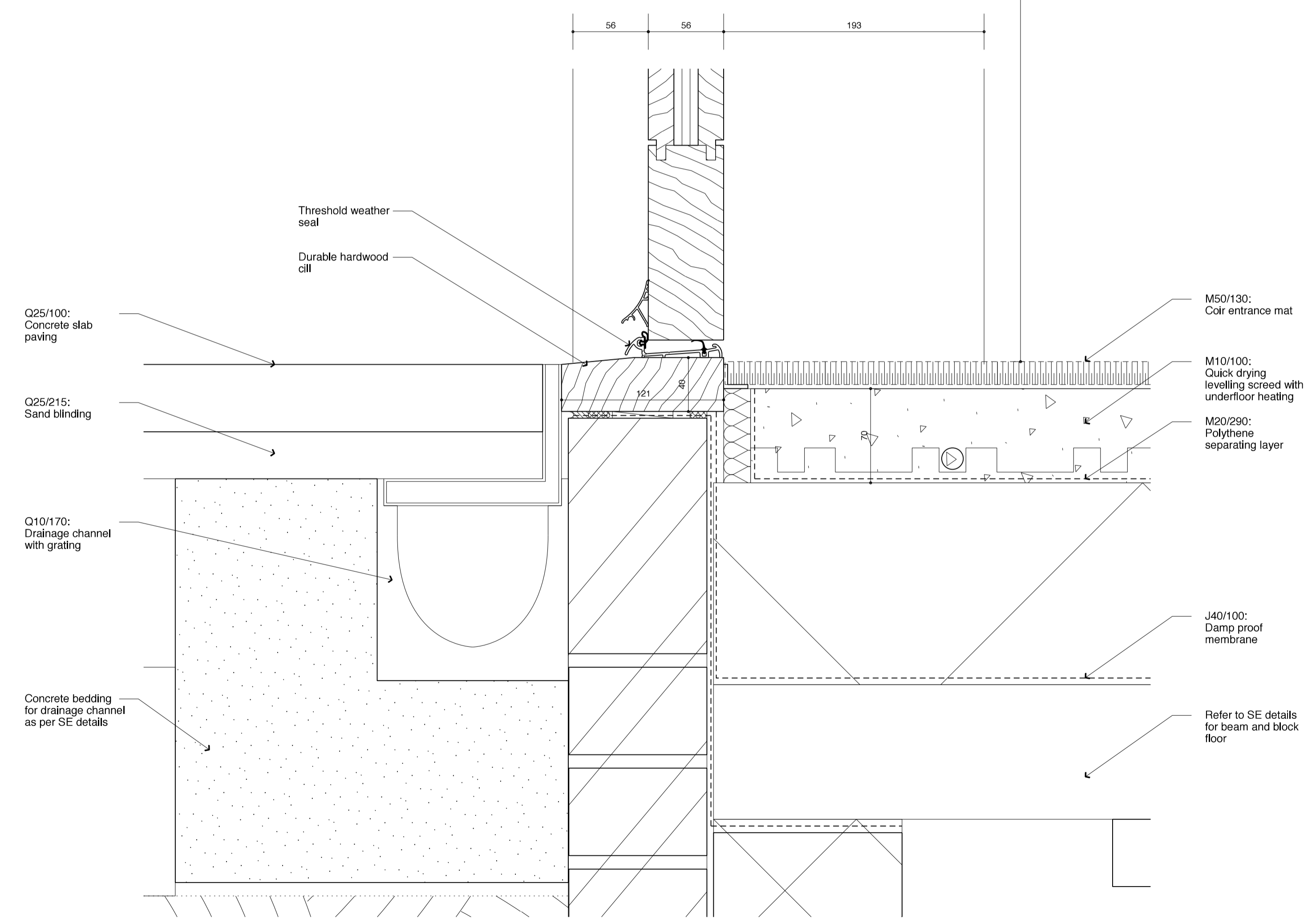
Detail 1
 ED1/05
 External timber entrance door jamb detail



Detail 2
 ED1/05
 External timber entrance door jamb detail



Detail 3
 ED1/05
 External timber entrance door head detail



Detail 4
 ED1/05
 External timber entrance door cill detail

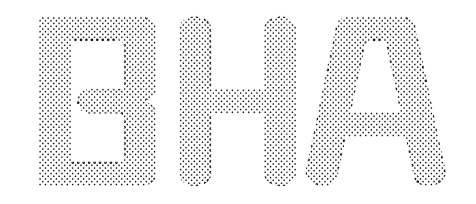
| | | | |
|-------------------|----------|----|---------|
| T1 | 02.11.15 | NI | CB |
| Issued for Tender | | | |
| Revision | Date | By | Checked |

For Tender

Site 1 - Corner Lamble St
 External Door Details_02
 Barrington & Lamble Infill Sites

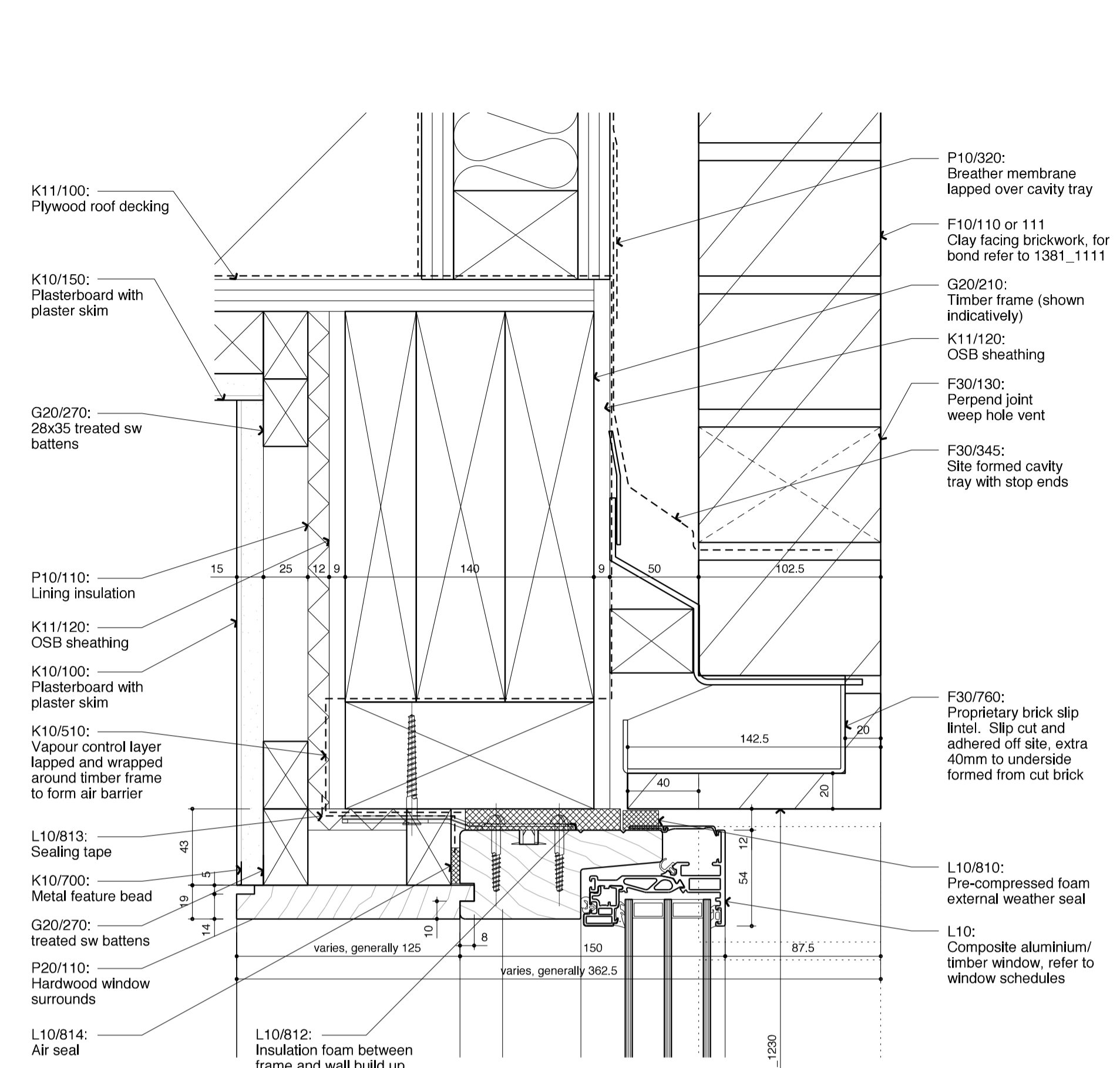
1381_1311_T1

Scale: 1:2.5 at A1
 1:5 at A3
 Date: 13.07.15
 Drawn: TS

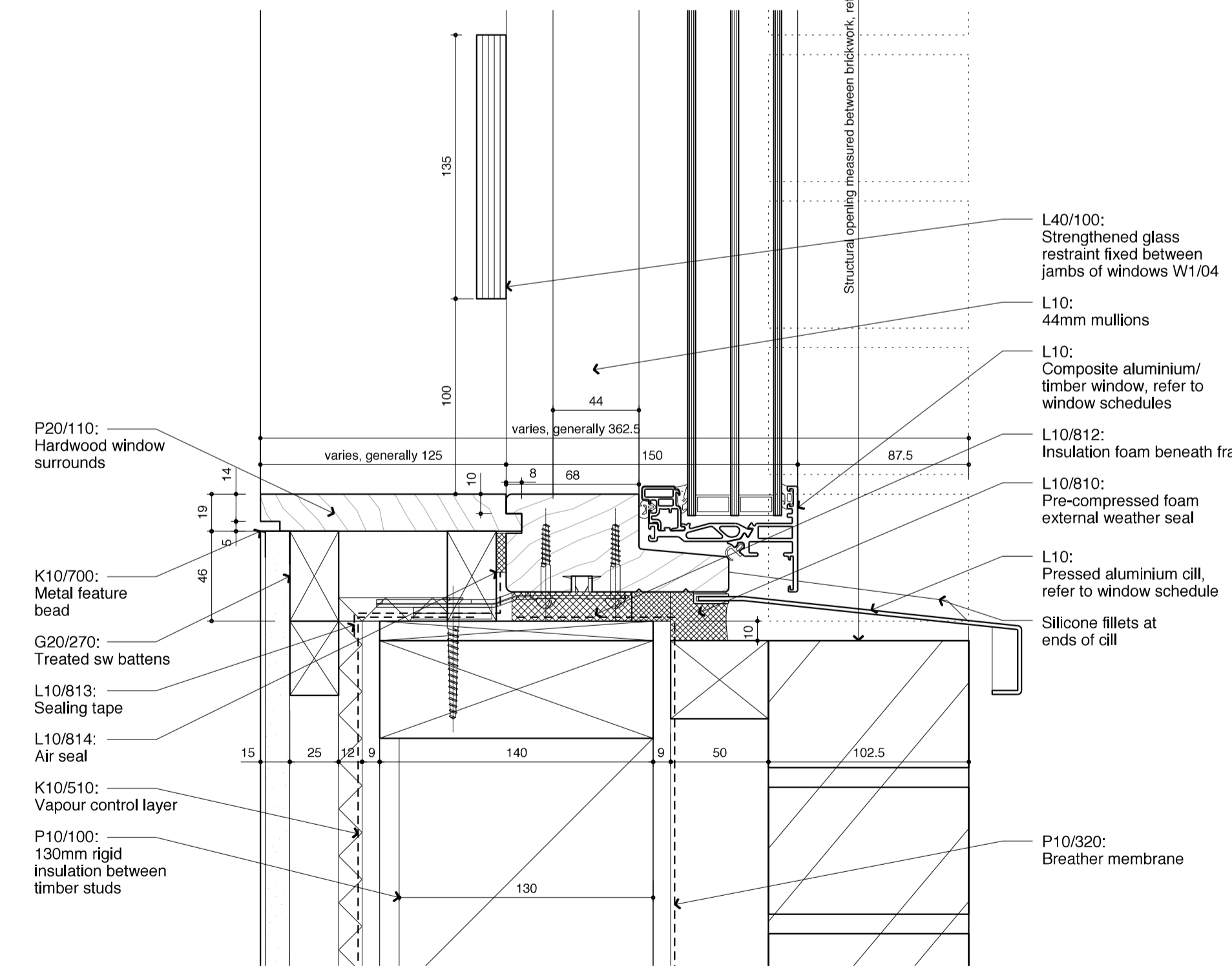


BURD HAWARD ARCHITECTS LTD
 United House, North Road
 London N7 9DP
 T +44 20 7267 9815
 E studio@burdhaward.com

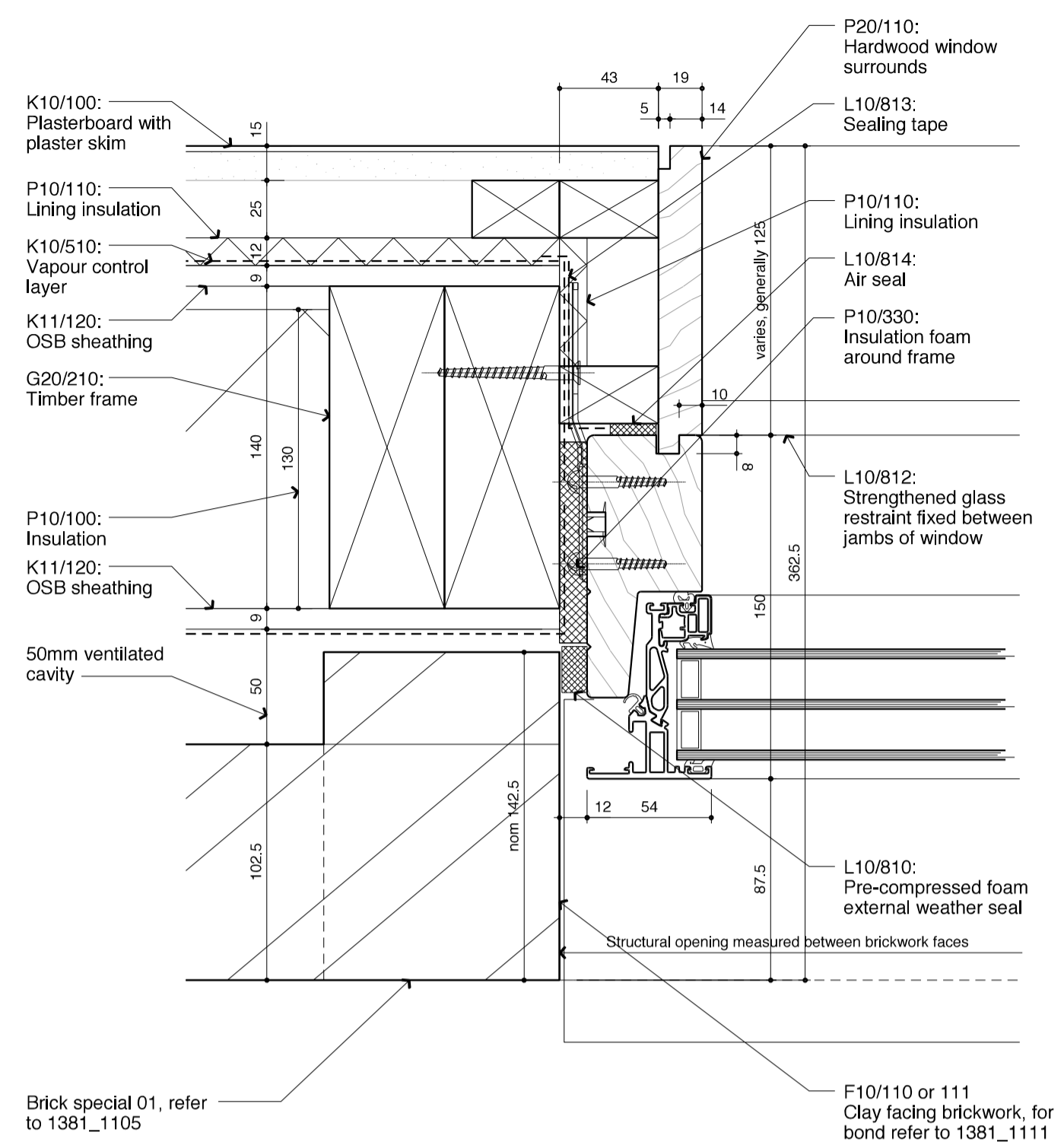




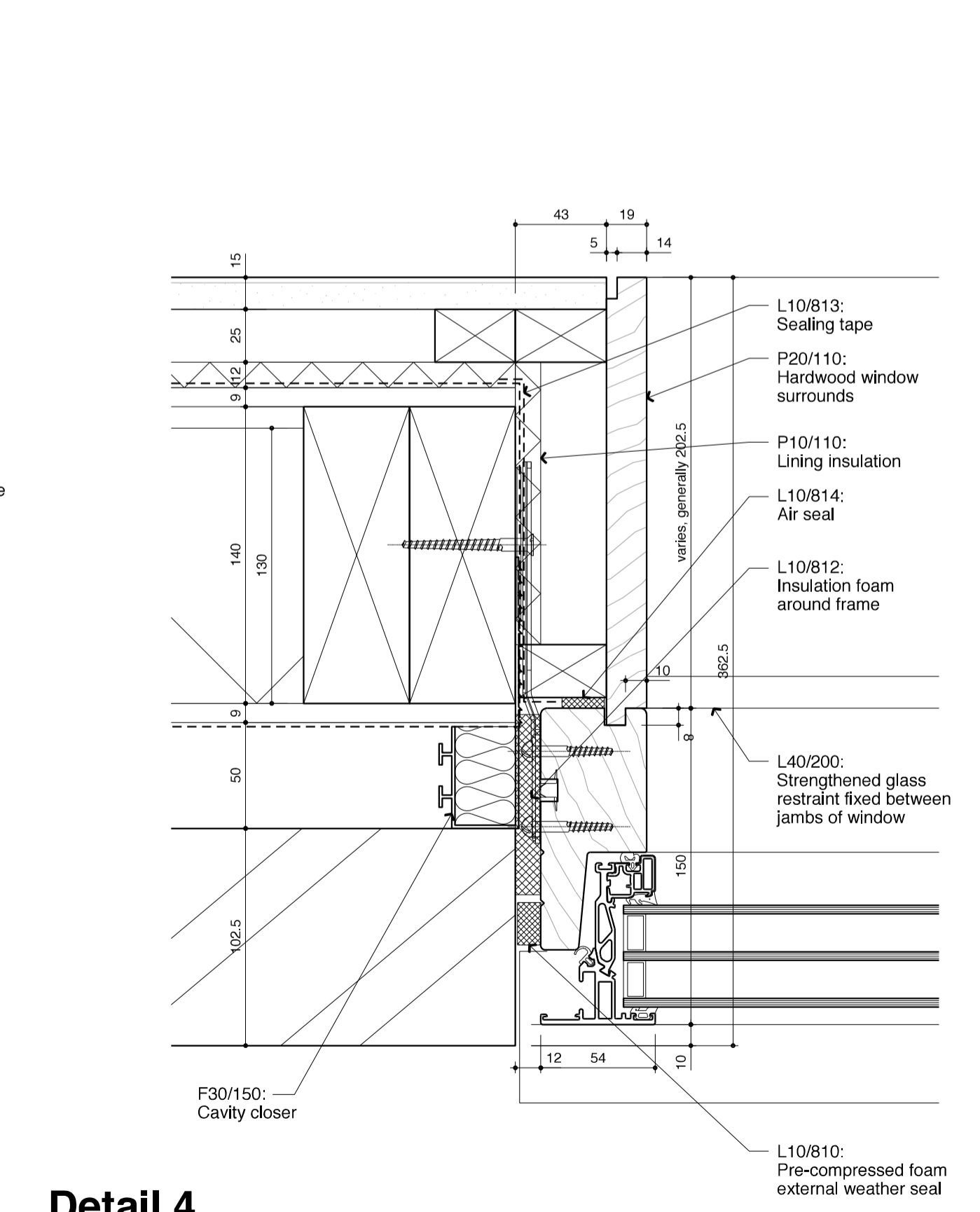
Detail 1
Typical head to triple glazed 1/2 brick reveals



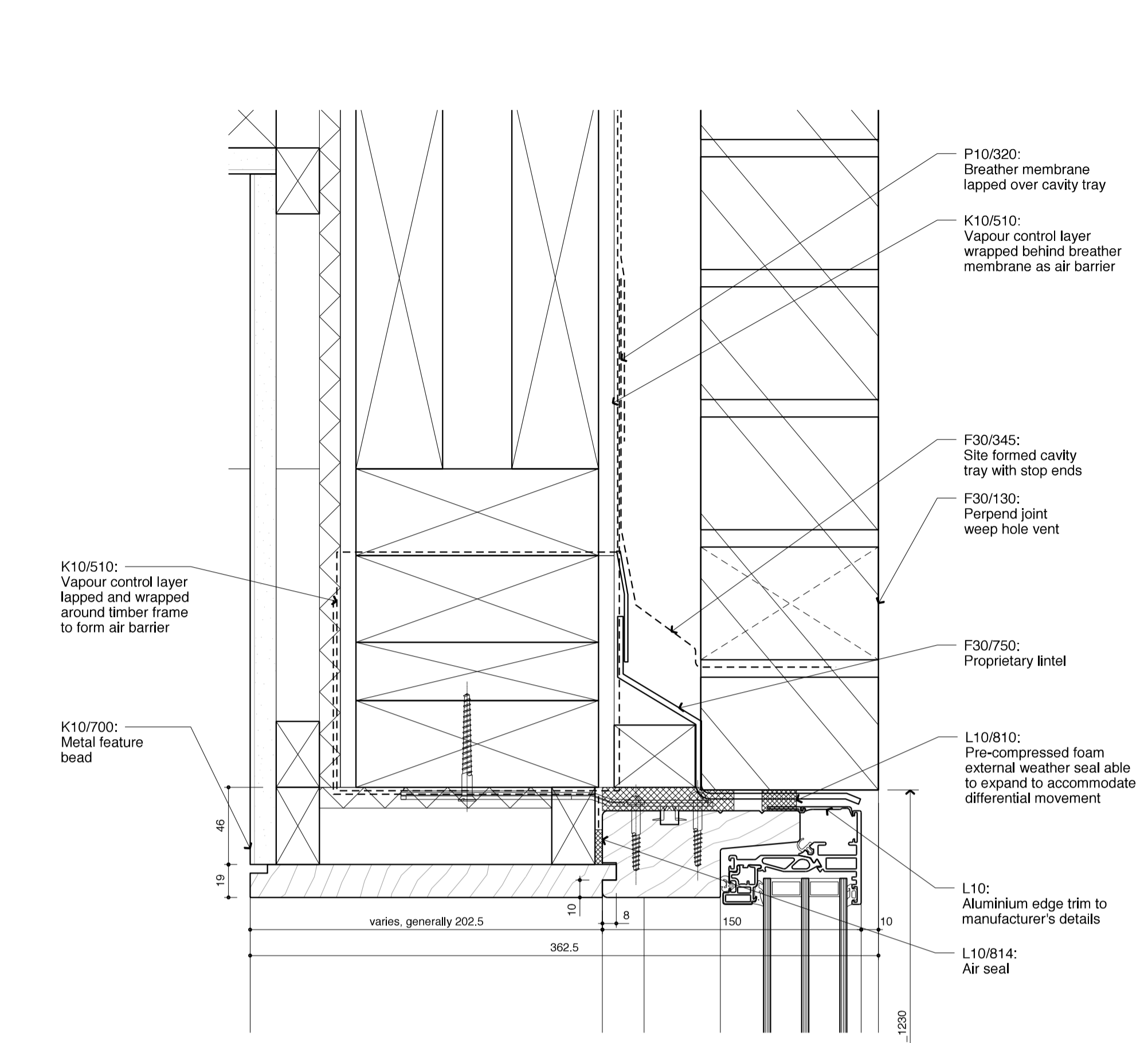
Detail 2
Typical cill to triple glazed 1/2 brick reveals



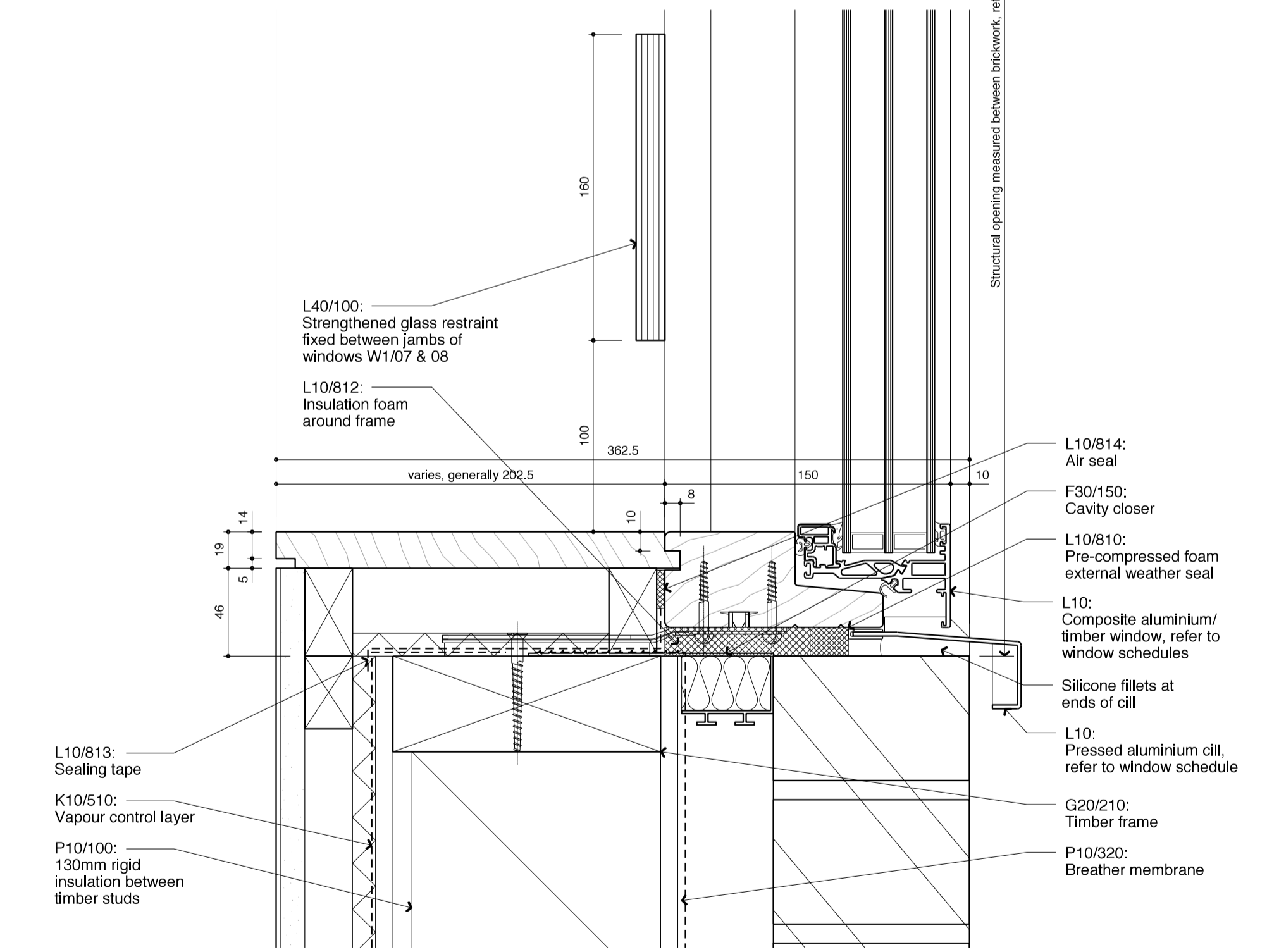
Detail 3
Typical jamb to triple glazed 1/2 brick reveals



Detail 4
Typical jamb to triple glazed flush reveals



Detail 5
Typical head to triple glazed flush reveals



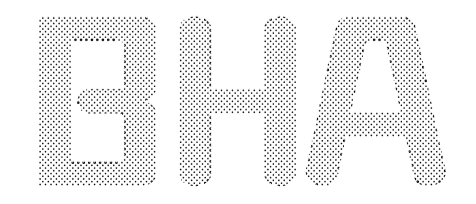
Detail 6
Typical cill to triple glazed flush reveals
NB Cill to W1/06 to meet laminated panel, no guarding
W1/09 no guarding

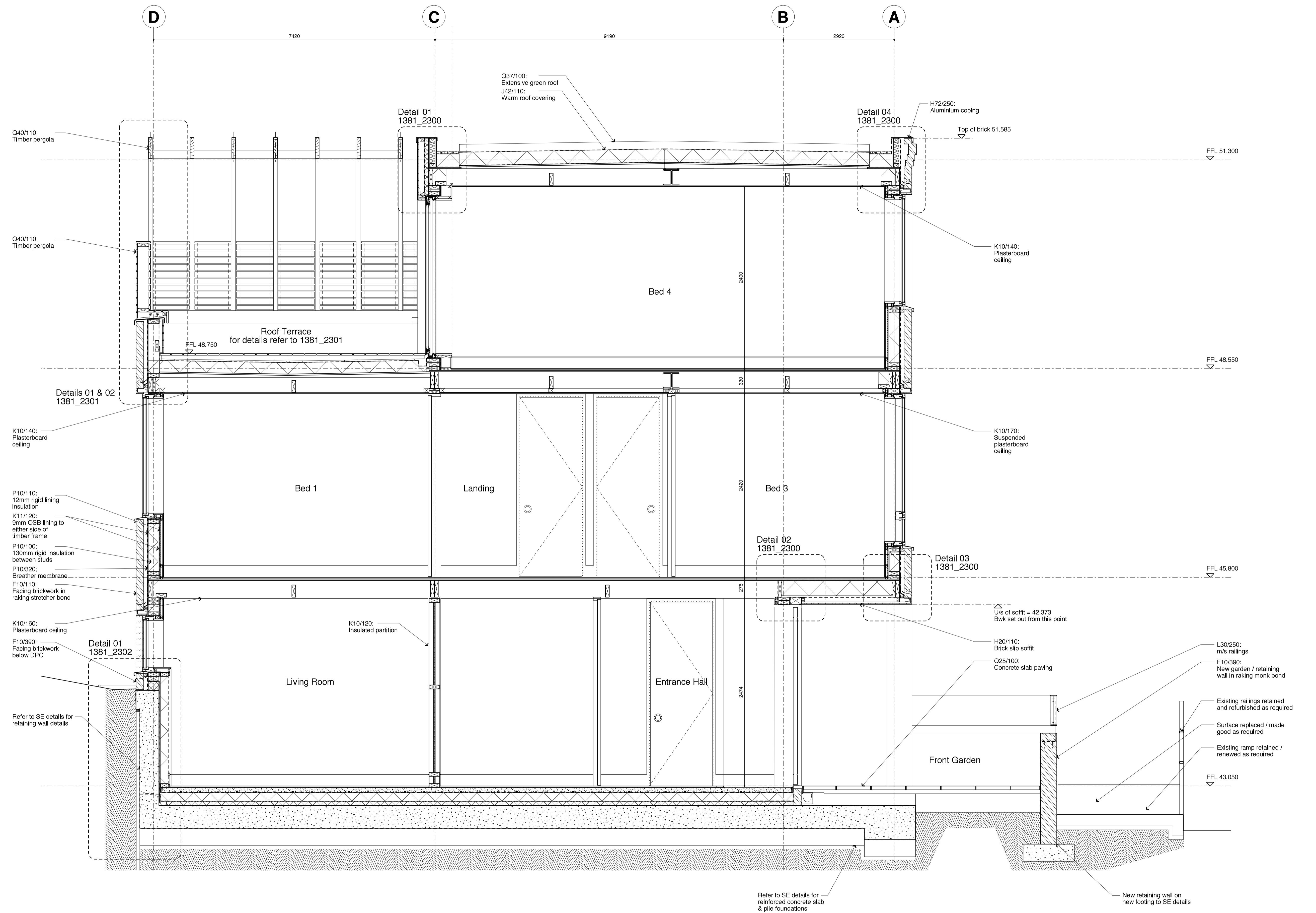
| | | | |
|-------------------|----------|----|---------|
| T1 | 02.11.15 | TS | CB |
| Issued for tender | | | |
| Revision | Date | By | Checked |

For Tender

**Site 1 - Corner Lamble St
Window Details Sheet 01**
Barrington & Lamble Infill Sites
1381_1320_T1

Scale: 1:2.5 at A1
1:5 at A3
Date: 13.07.15
Drawn: TS





Section AA

| | | | |
|-------------------|----------|----|---------|
| T1 | 02.11.15 | TS | CB |
| Issued for Tender | | | |
| Revision | Date | By | Checked |

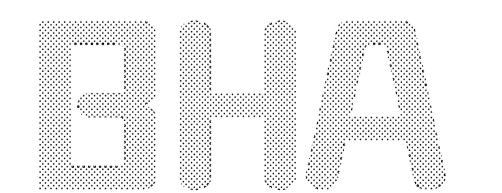
For Tender

**Site 2 - Lamble St Pram Sheds
 Section AA**

Barrington & Lamble Infill Sites

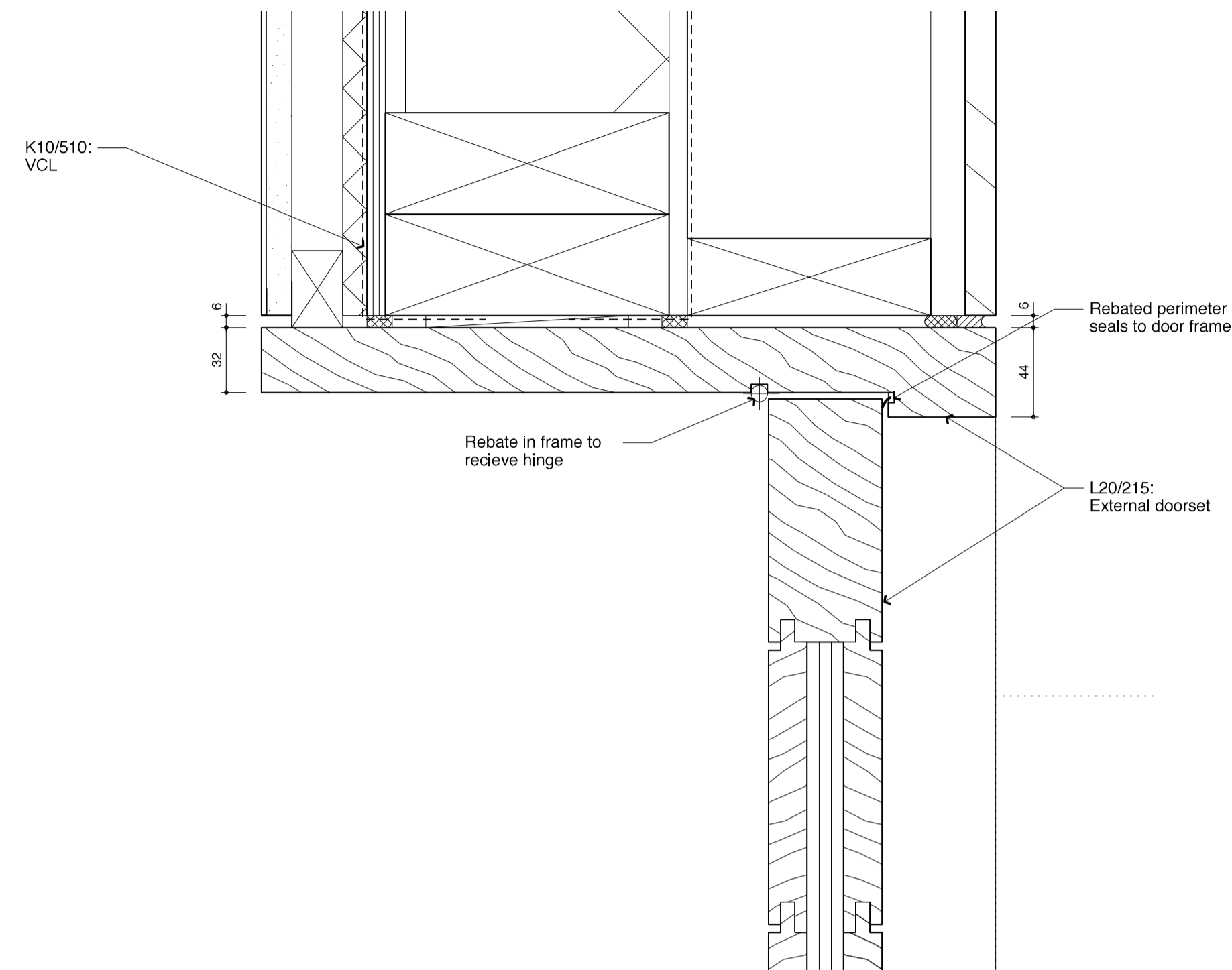
1381_2200_T1

Scale: 1:25 at A1
 1:50 at A3
 Date: 19.01.15
 Drawn: TS

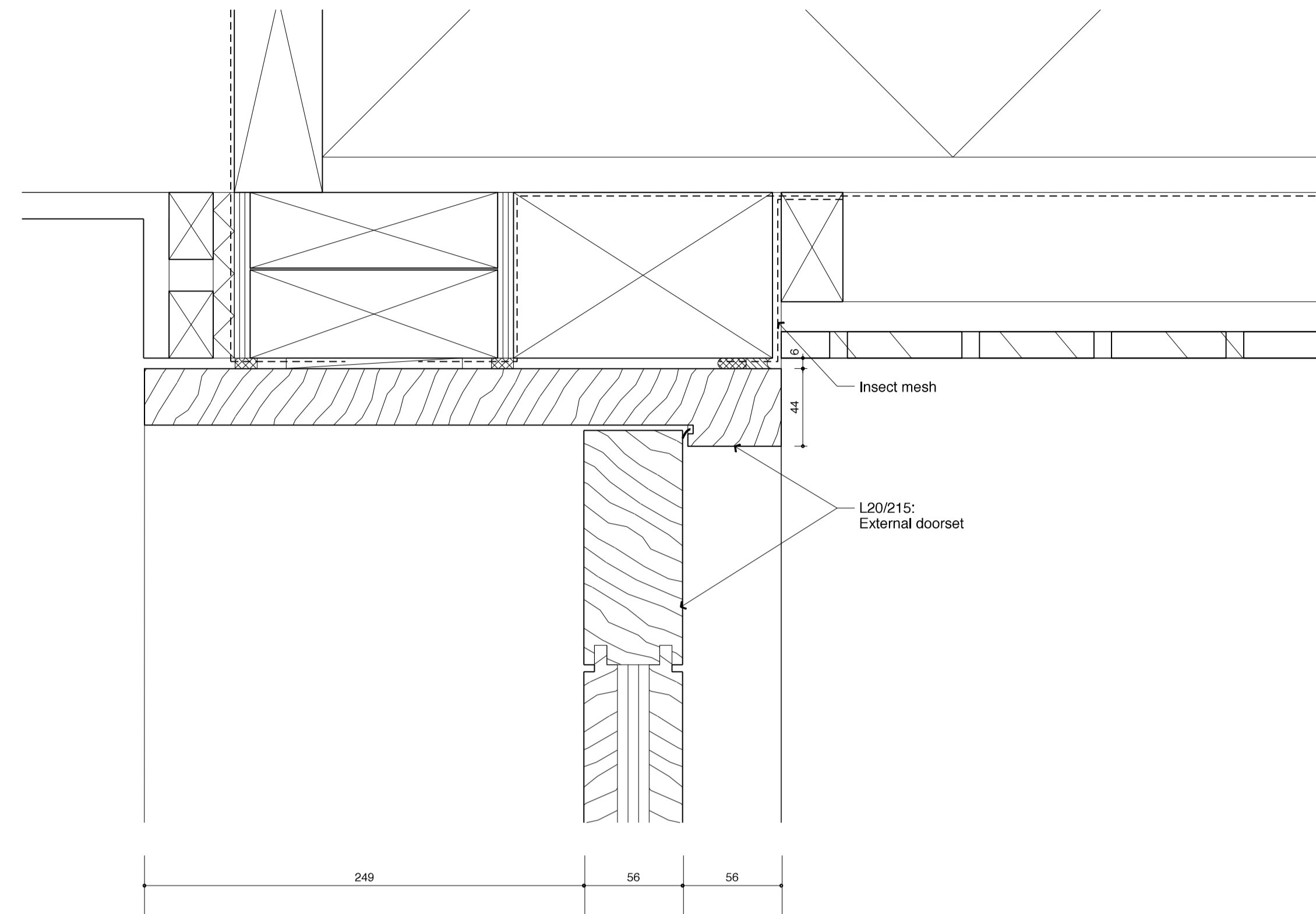


BURD HAWARD ARCHITECTS LTD
 United House, North Road
 London N7 9DP
 T +44 20 7267 9815
 E studio@burdhaward.com

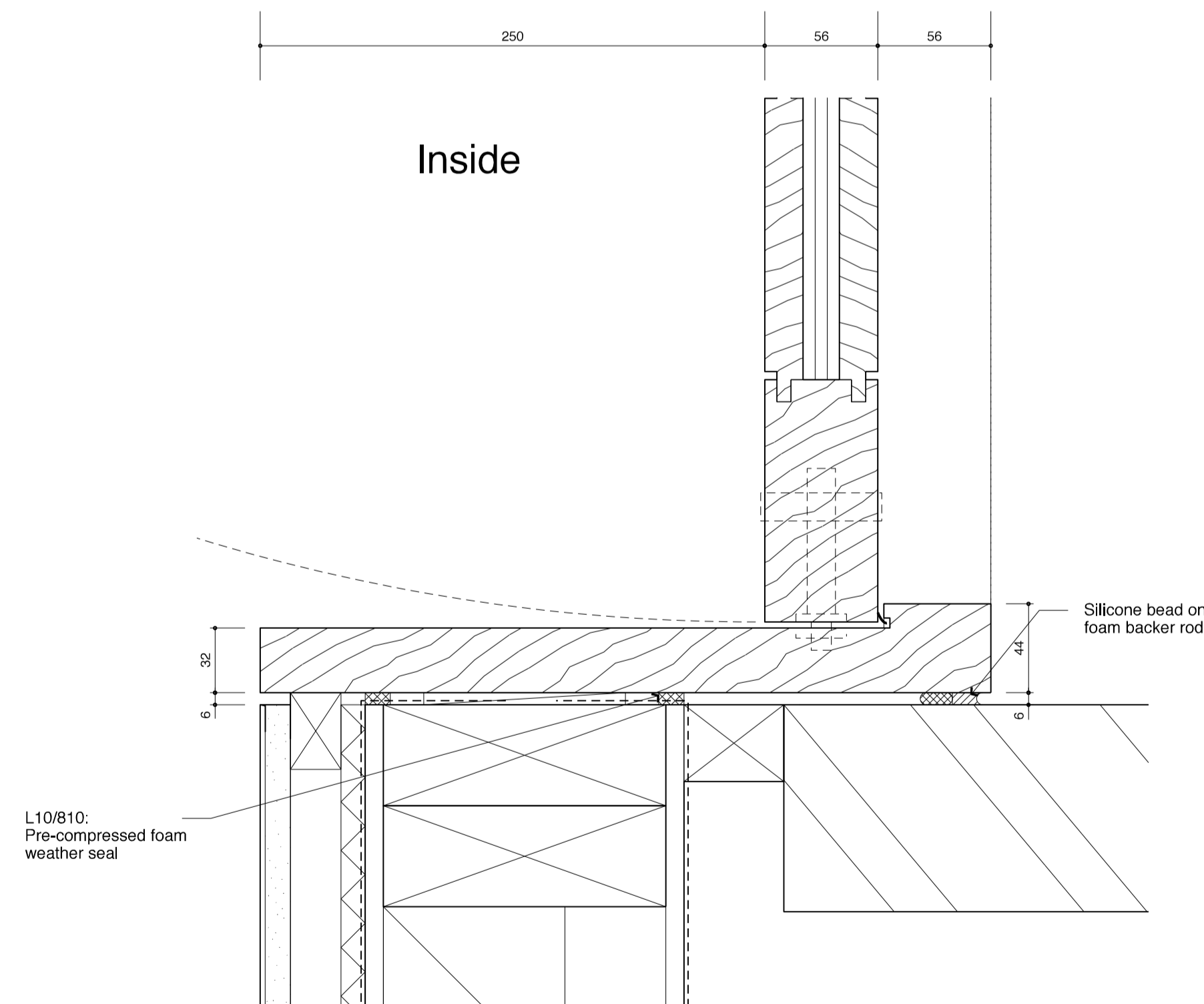




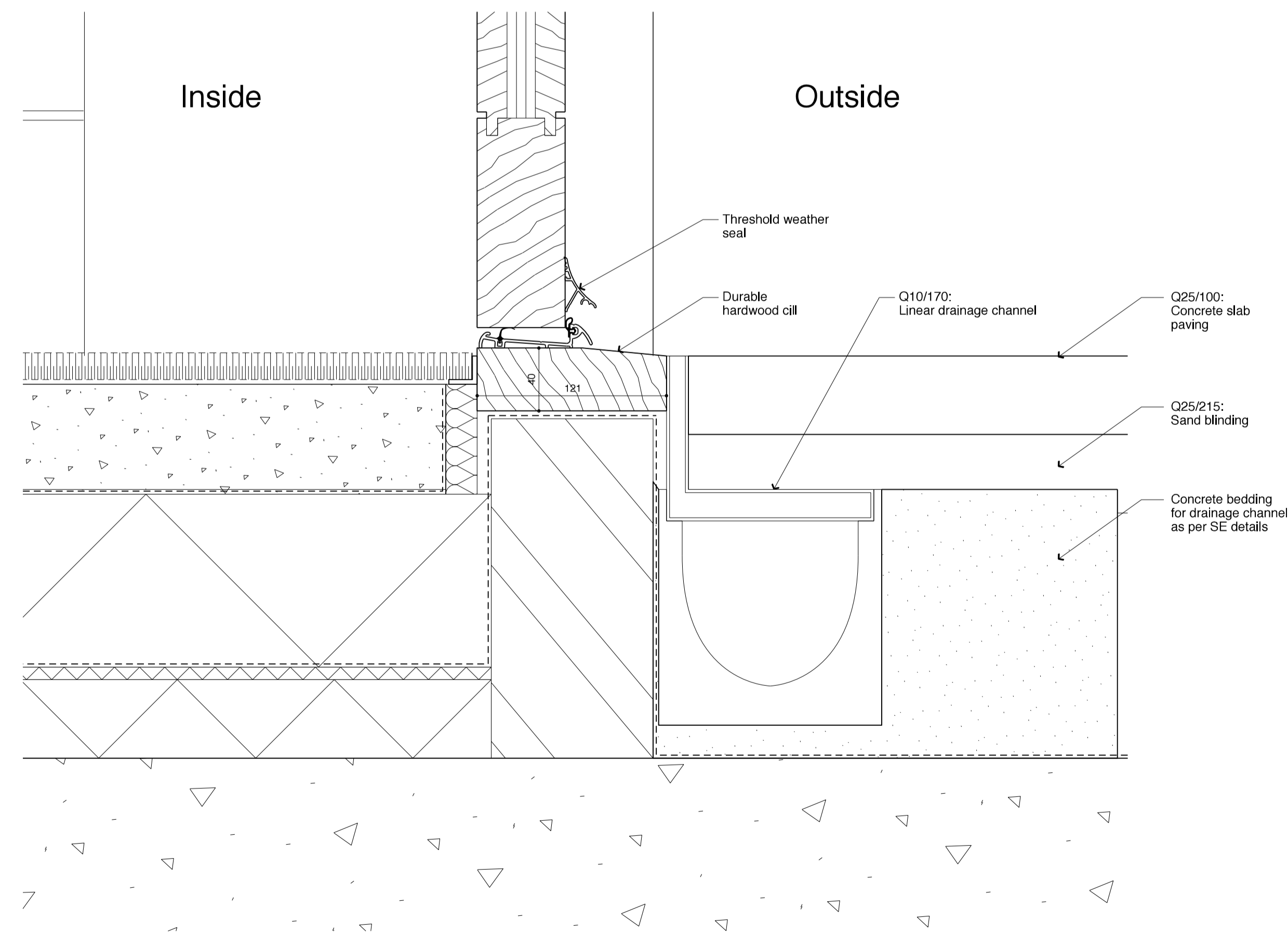
Detail 1
 ED2/02
 External timber entrance door jamb detail



Detail 3
 ED2/02
 External timber entrance door head detail



Detail 2
 ED2/02
 External timber entrance door jamb detail



Detail 4
 ED2/02
 External timber entrance door cill detail

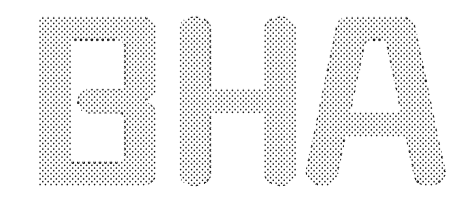
| | | | |
|-------------------|----------|----|---------|
| T1 | 02.11.15 | NI | |
| Issued for Tender | | | |
| Revision | Date | By | Checked |

For Tender

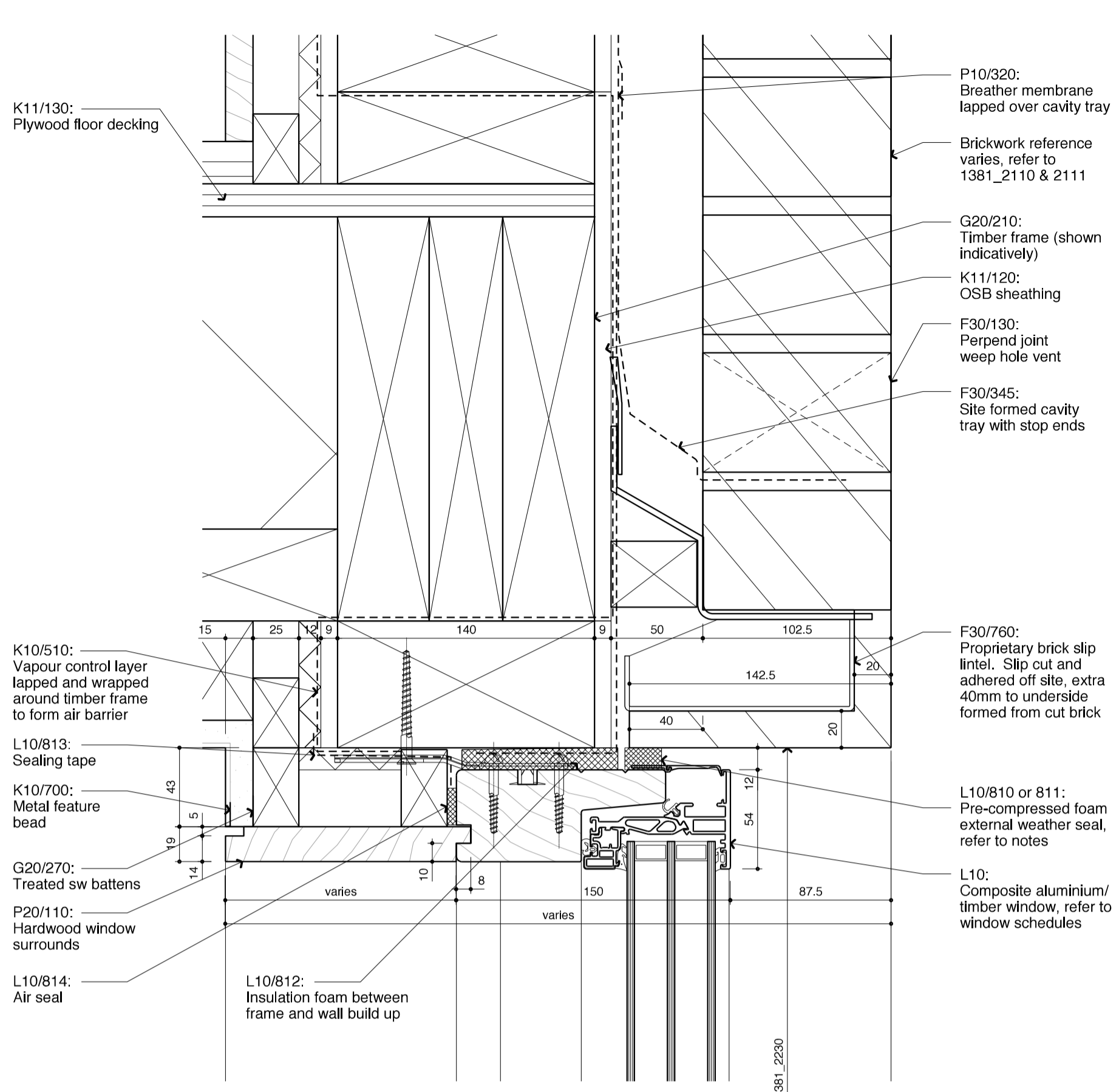
Site 2 - Lamble St Pram Sheds
 External Door Details_03
 Barrington & Lamble Infill Sites

1381_2317_T1

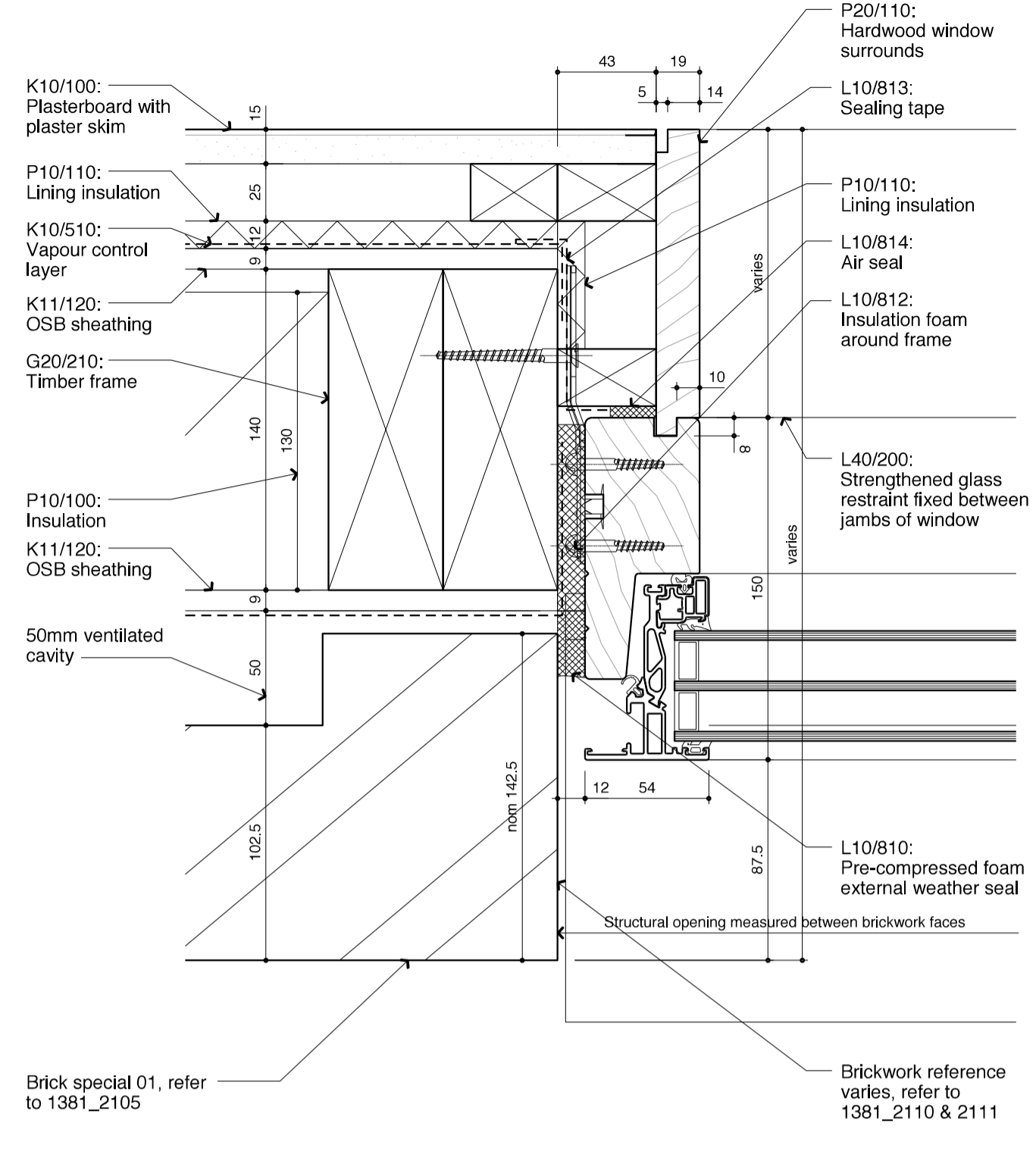
Scale: 1:2.5 at A1
 1:5 at A3
 Date: 13.07.15
 Drawn: TS



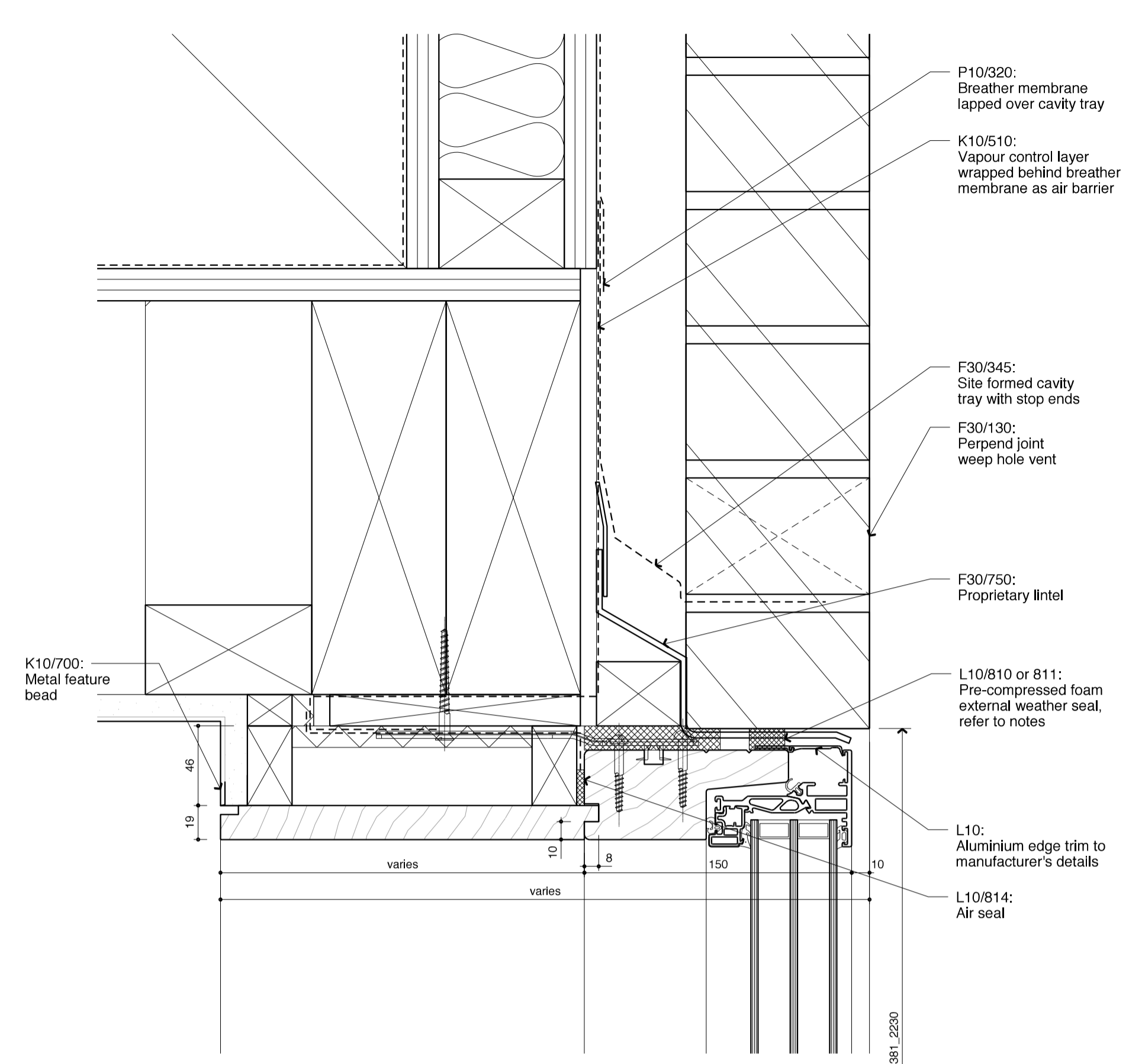
BURD HAWARD ARCHITECTS LTD
 United House, North Road
 London N7 9DP
 T +44 20 7267 9815
 E studio@burdhaward.com



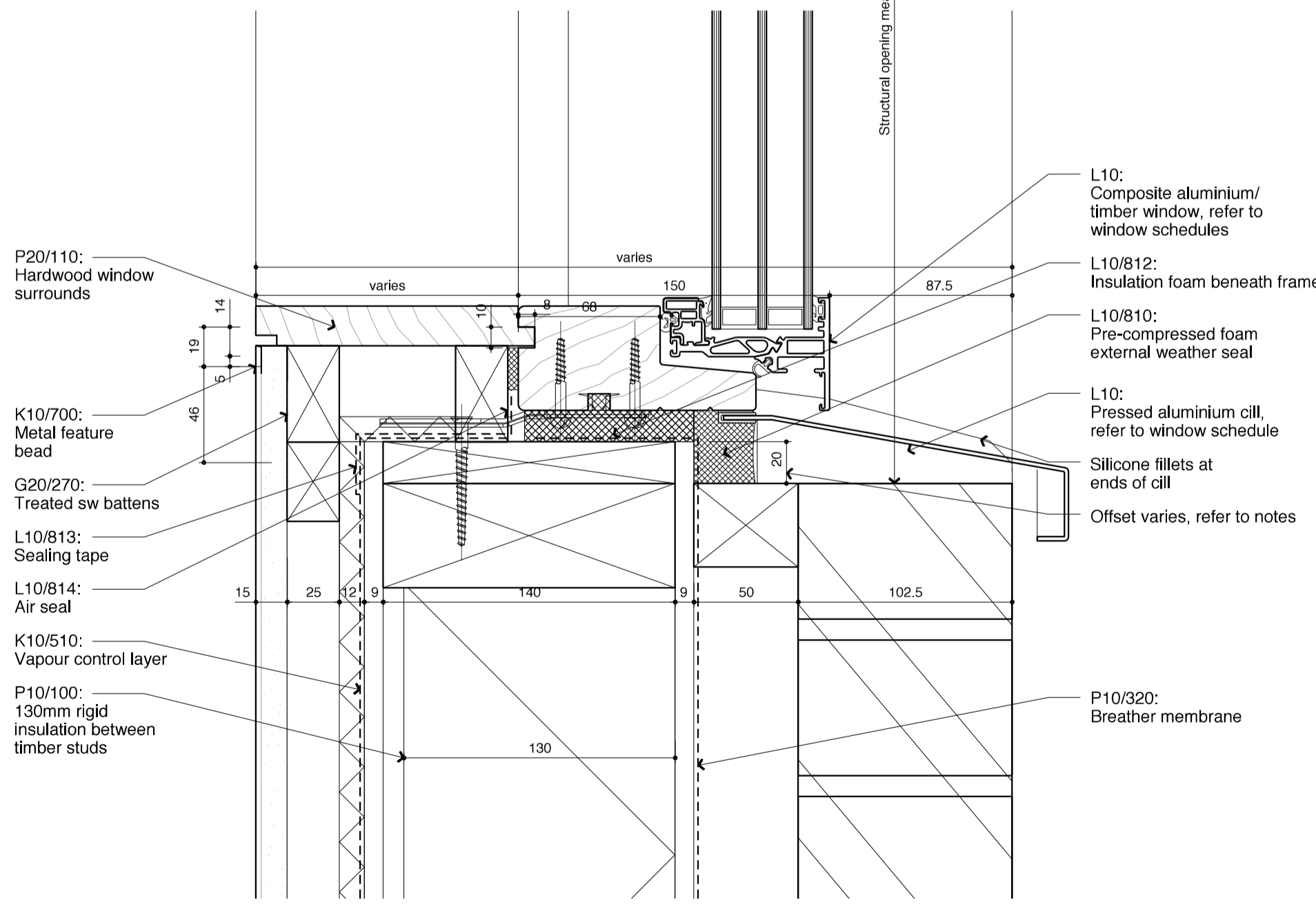
Detail 1
Typical head to triple glazed 1/2 brick reveals



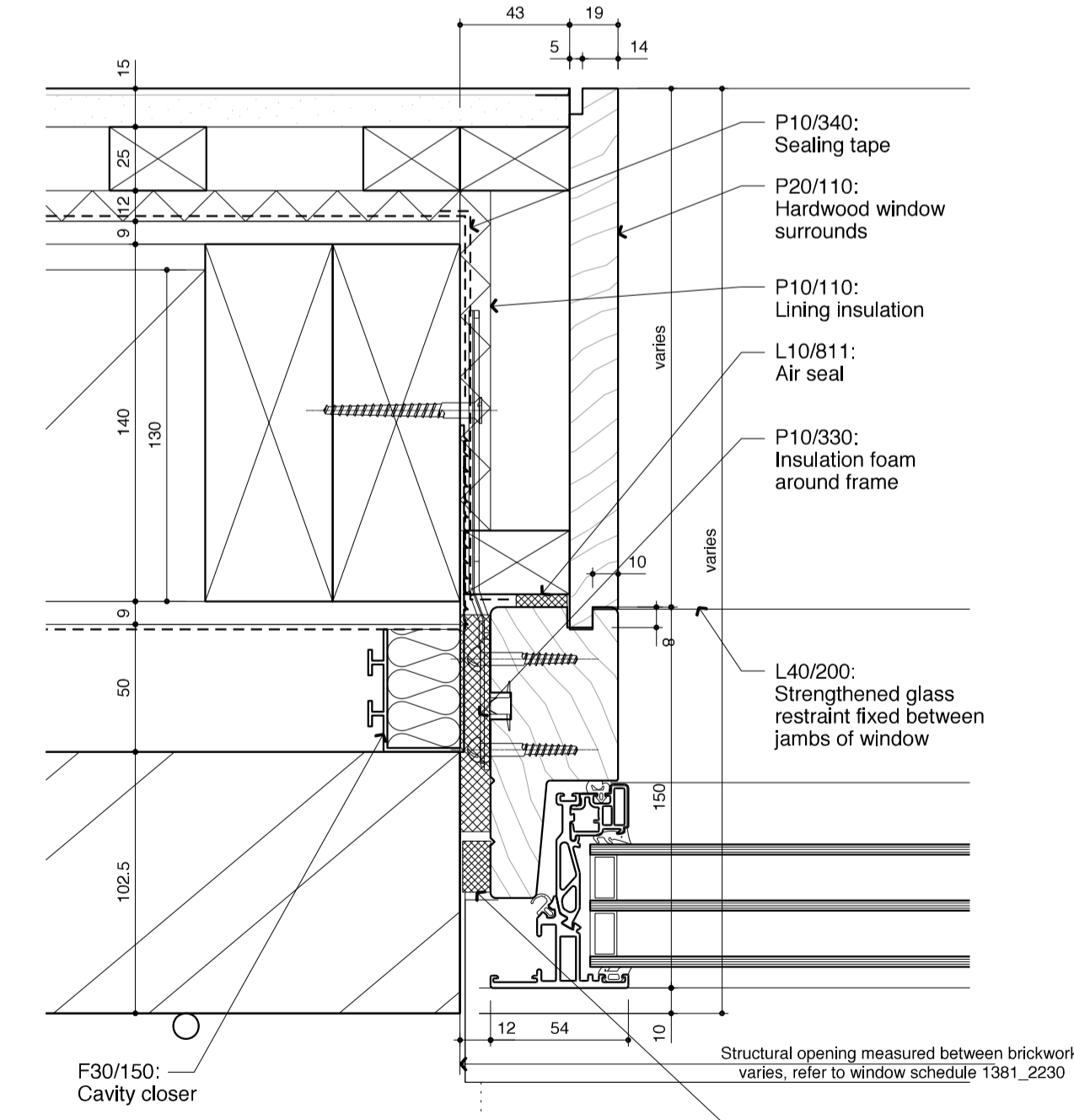
Detail 3
Typical jamb to triple glazed 1/2 brick reveals



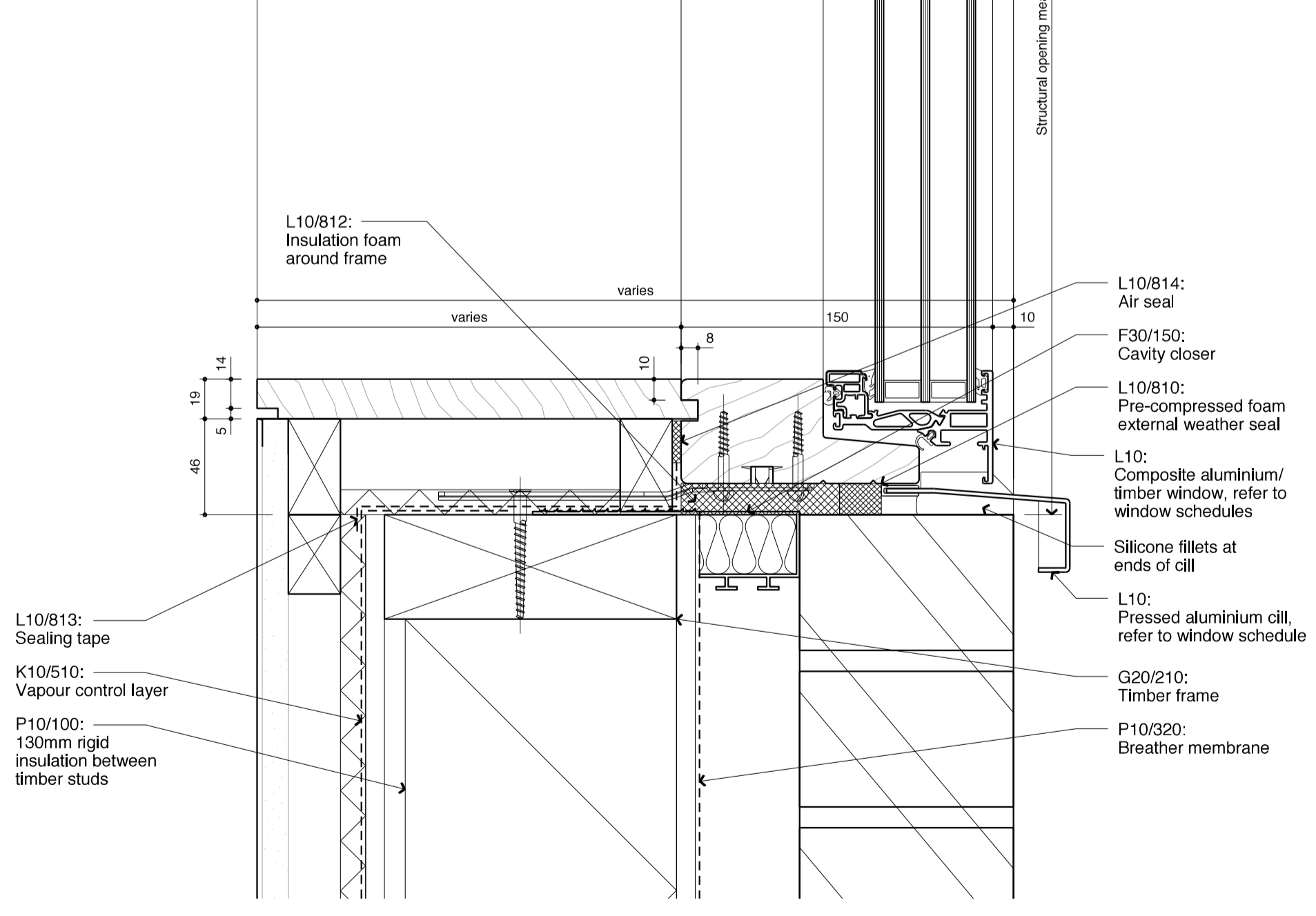
Detail 5
Typical head to triple glazed flush reveals



Detail 2
Typical cill to triple glazed 1/2 brick reveals NB W2 10 & 12 to have tiled reveals



Detail 4
Typical jamb to triple glazed flush reveals



Detail 6
Typical cill to triple glazed flush reveals

Notes:

Differential movement:
In order to accommodate the differential movement of the timber frame the following allowances are to be made:

Recessed window cills:
Offset between the structural cill and the brickwork cill will be as follows:
GF - Timber cill 10mm above brickwork cill
FF - Timber cill 20mm above brickwork cill
SF - Timber cill 30mm above brickwork cill

Flush window cills:
Offset between the structural cill and the brickwork cill will be as follows:
GF - Align cills
FF - Timber cill 10mm above brickwork cill
SF - Timber cill 20mm above brickwork cill

Window Heads:
Ensure that correct expansion foam (L10/810 or 811) is used to accommodate movement as follows:
GF - 3mm
FF - 10mm
SF - 20mm

| | | | |
|-------------------|----------|----|---------|
| T1 | 02.11.15 | TS | CB |
| Issued for tender | | | |
| Revision | Date | By | Checked |

For Tender

Site 2 - Lamble St Pram Sheds Window Details Sheet 01
Barrington & Lamble Infill Sites
1381_2320_T1

Scale: 1:2.5 at A1
1:5 at A3
Date: 13.07.15
Drawn: TS

