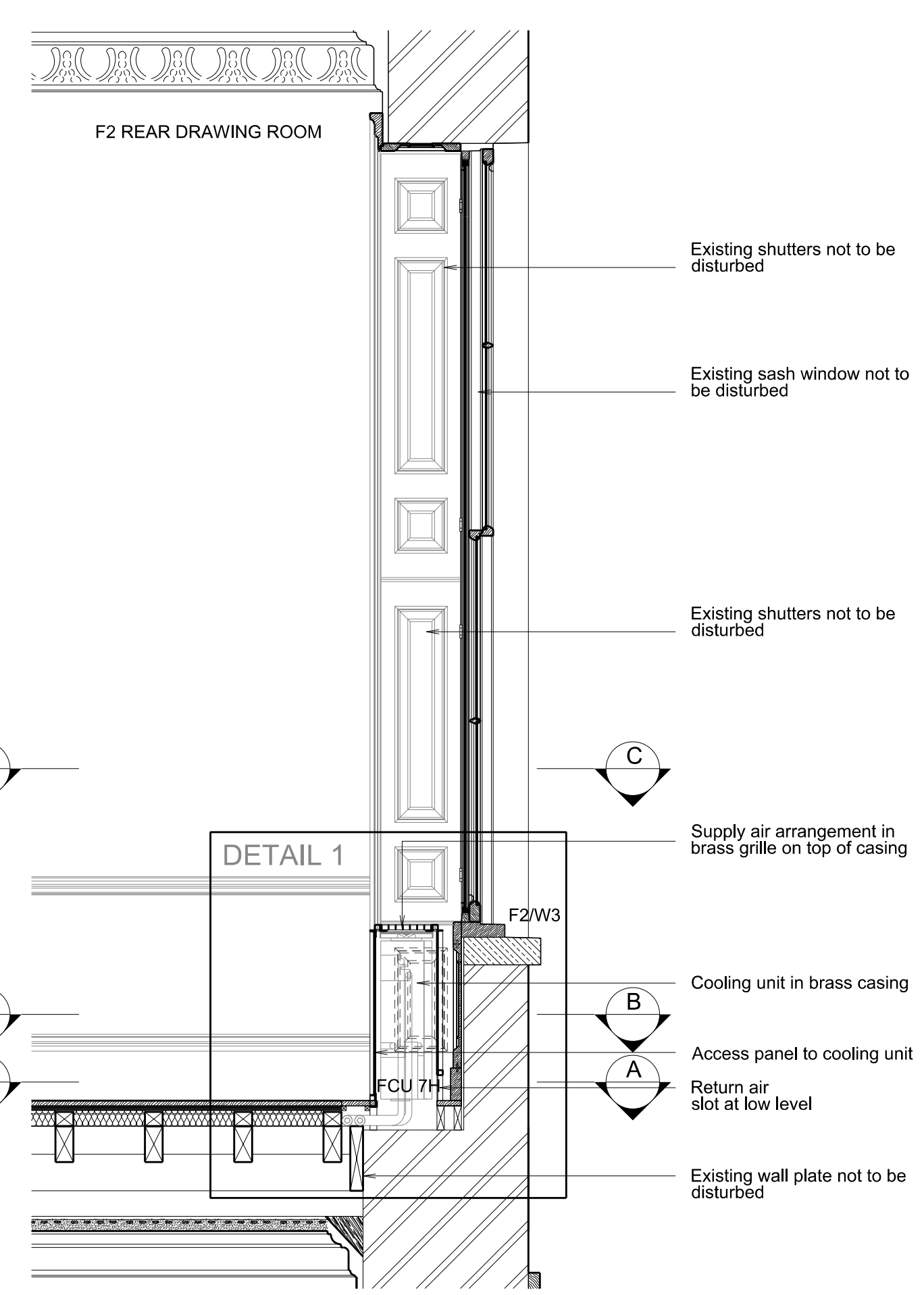


**D-D ELEVATION - F2 REAR DRAWING ROOM**  
SCALE 1:20

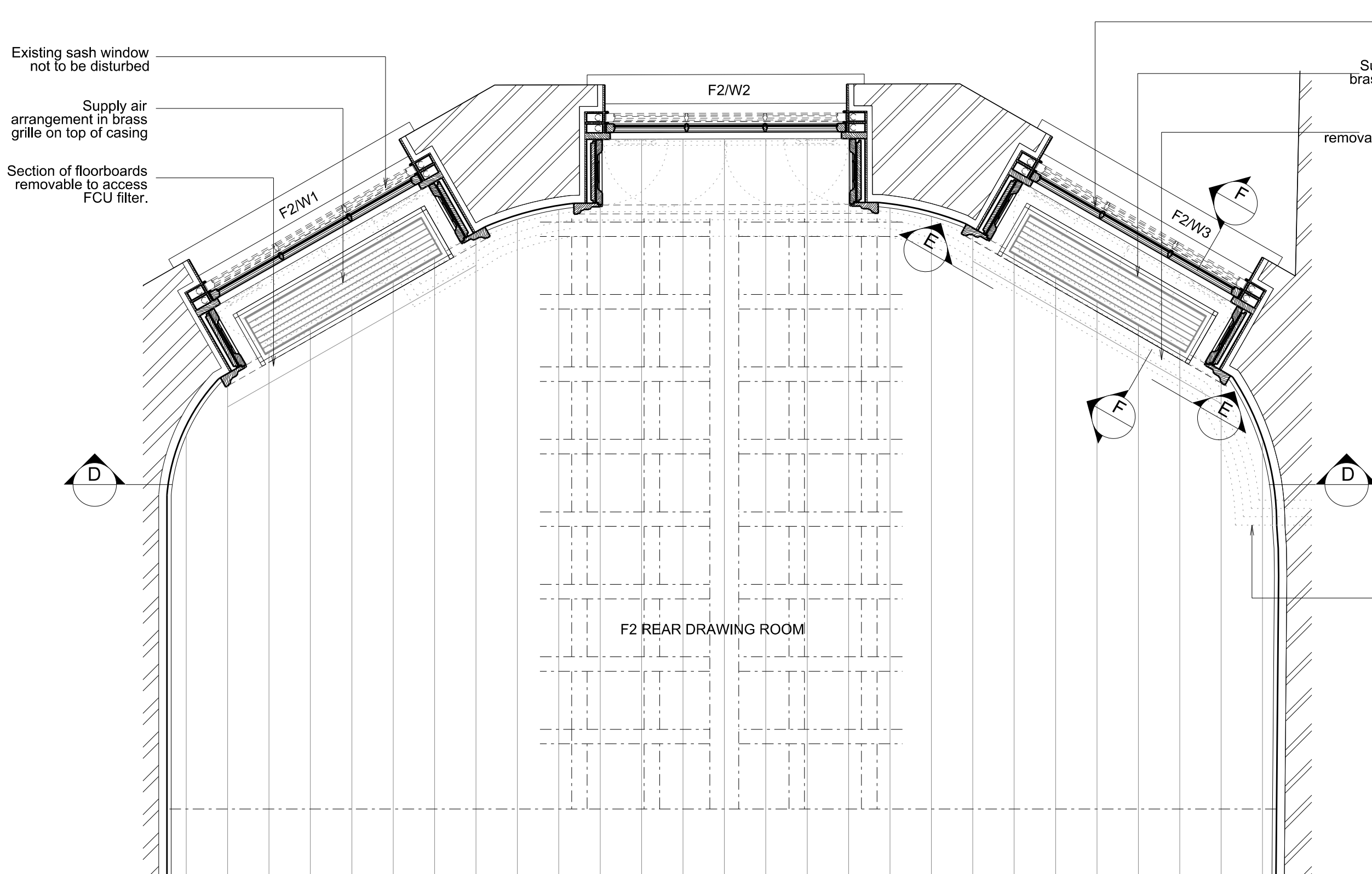
Existing panel to reveals and stallboard not to be disturbed



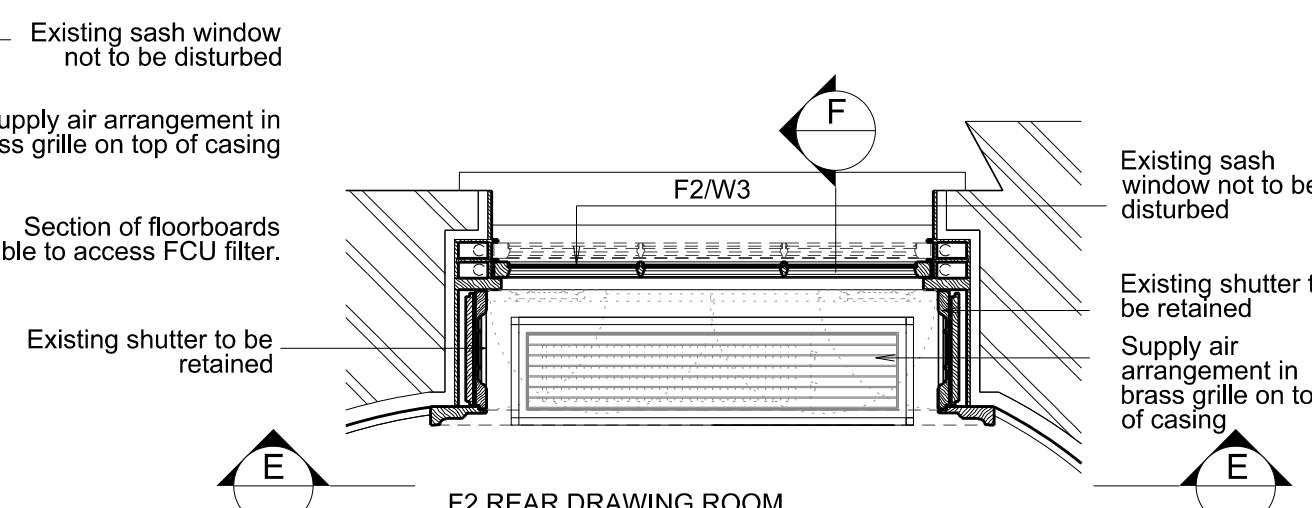
**E-E ELEVATION - WINDOW REVEAL**  
SCALE 1:20



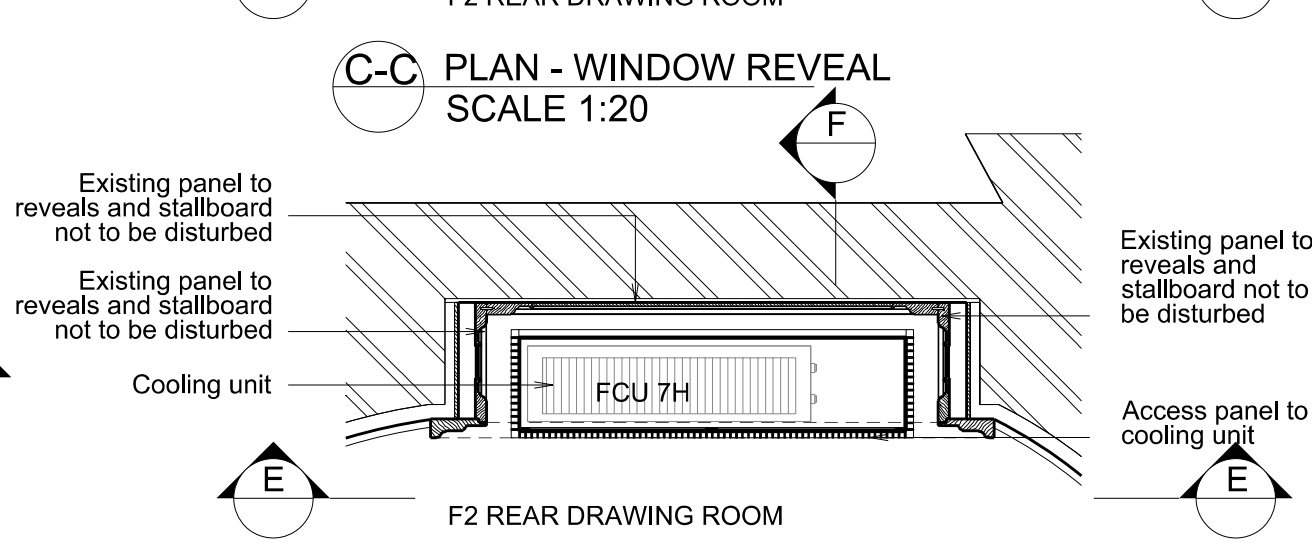
**F-F SECTION - WINDOW REVEAL**  
SCALE 1:20



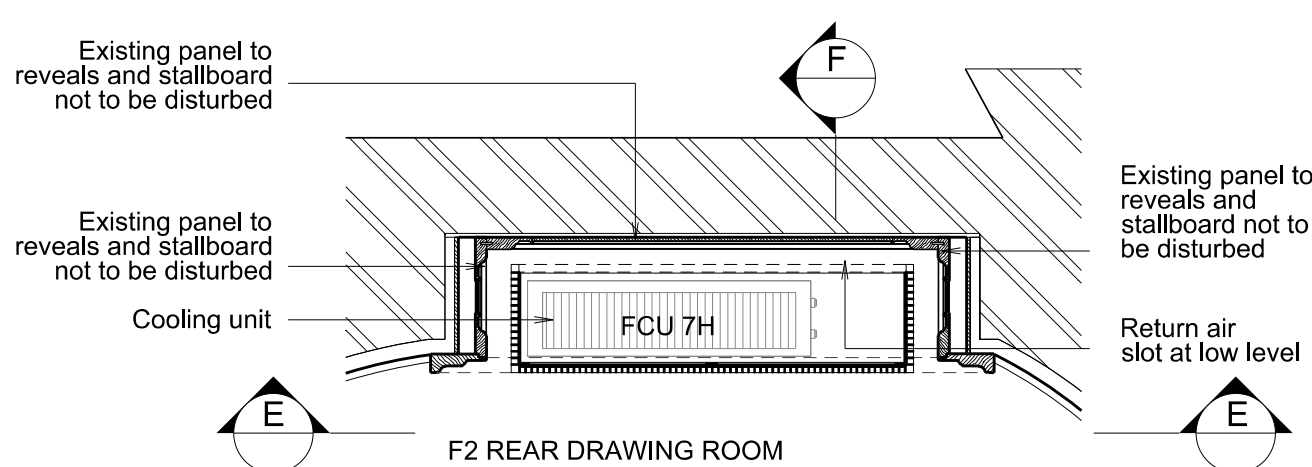
**PARTIAL PLAN - F2 REAR DRAWING ROOM**  
SCALE 1:20



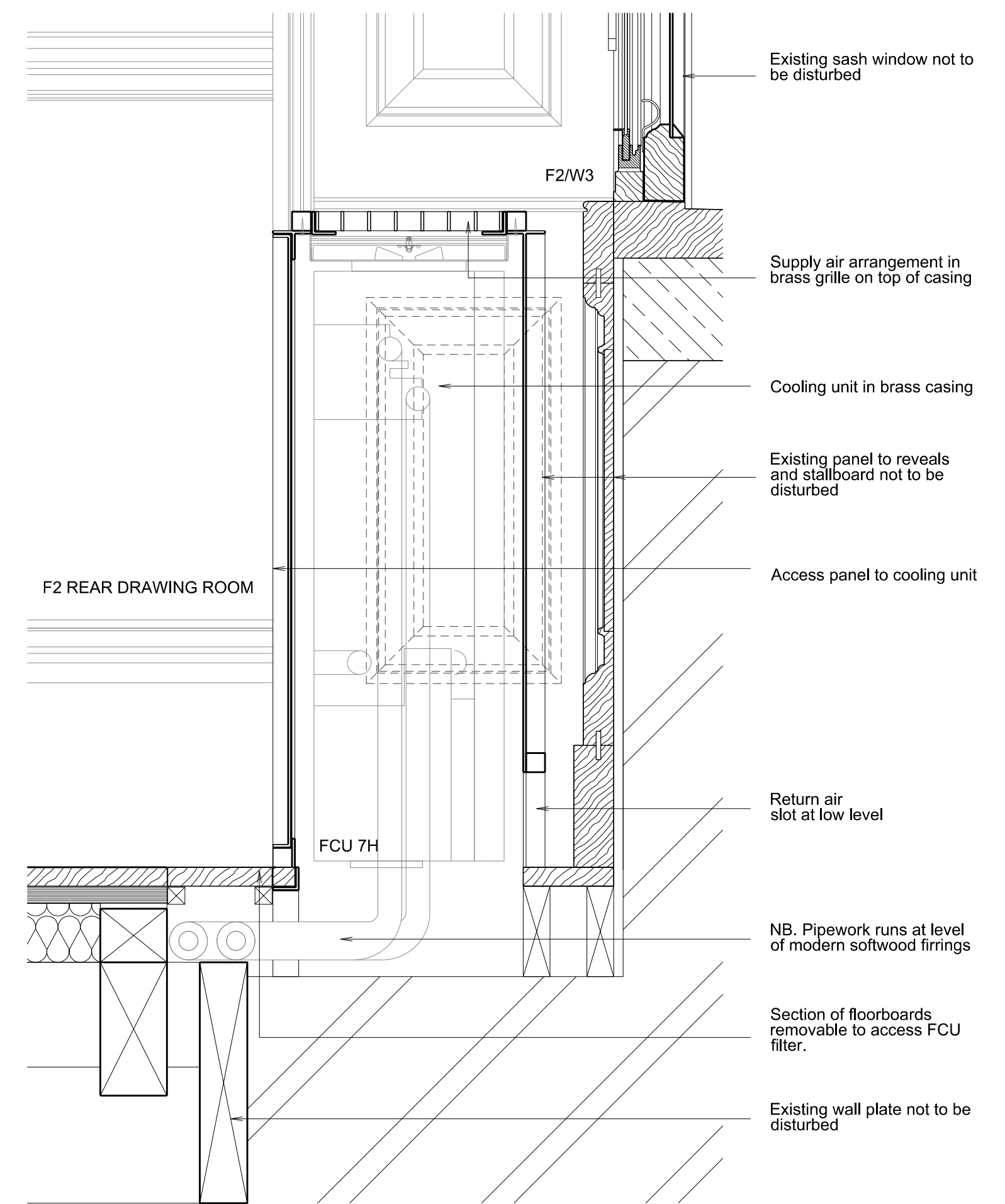
**C-C PLAN - WINDOW REVEAL**  
SCALE 1:20



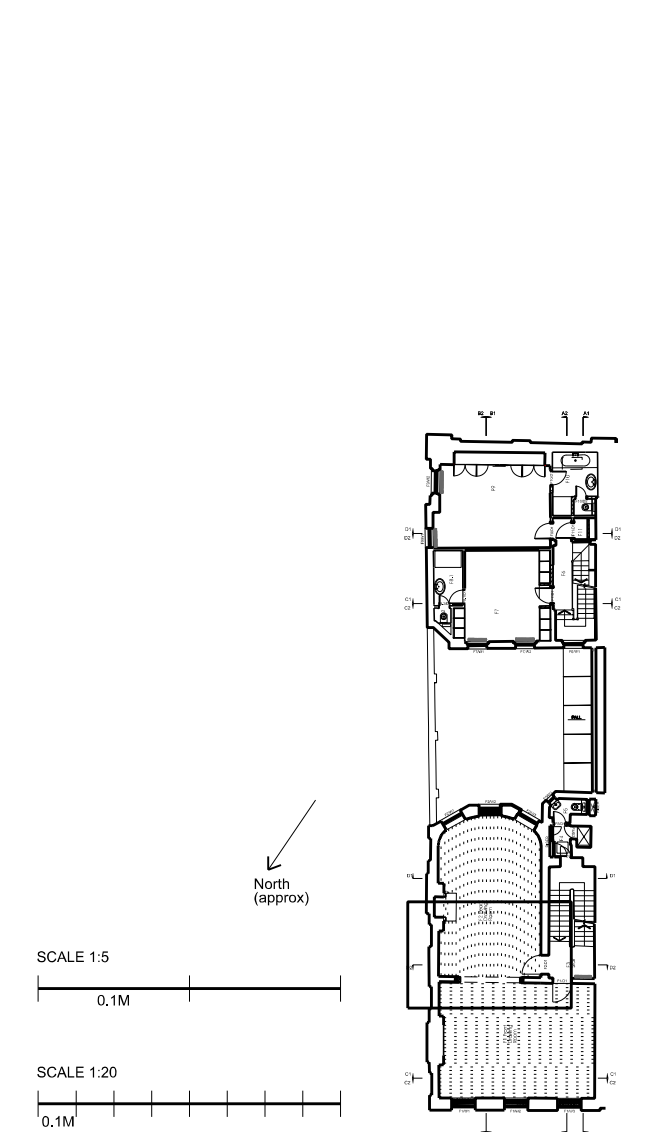
**B-B PLAN - WINDOW REVEAL**  
SCALE 1:20



**A-A PLAN - WINDOW REVEAL**  
SCALE 1:20



**DETAIL 1**  
SCALE 1:5



DATE	REVISION	COMMENT	AUTHOR	AUTHORISED
11.01.10	B	FCU AND CASING AMENDED	SB	PI
25.11.15	A	FCU AND CASING AMENDED EXISTING DETAIL OF FLOOR BUILDUP ADDED	SB	AC
24.08.15	-	PLANNING AND LBC	SB	PI

**53 BEDFORD SQUARE**  
TITLE  
FCU INTEGRATION  
F2 REAR DRAWING ROOM - FCU 7A&BH  
DWG NO 53 BS U 306 B SCALE as stated@A1  
DATE AUG 2015

1103 Bedford Square/Work Bedford2/1/revision\_A1/CaseDrawing/0001\_PIC\_Combined3 BS U 306 B - PETER INSKIP + PETER JENKINS ARCHITECTS LTD 19 - 23 WHITE LION STREET LONDON N1 9PD TELEPHONE 020 78334002 FAX 020 72785343