

TOTAL LENGTH: 93.45m  
SLOPE: 4.71% (1:21)

THE REGENTS CANAL

Stainless steel top flange of structural trough varies in height relative to bridge deck and supports stainless steel balustrade and handrail.

Stainless steel balustrade varies in length to ensure that both handrail and top rail remain a constant distance above the bridge deck.

Mild steel bridge deck and varying height trough upstands feature a continuous resin bonded aggregate finish.

Stainless steel and timber balustrades, handrails and fences along the western approach ramp. For the location of each type refer to drawing 1013.

Brick parapet retained

Movement joint

CCTV mast

Stainless steel bollard and swing gate

500mm wide welded wire basket with granite infill gabions as cladding to concrete retaining and abutment walls beyond. Gabion rows to follow the slope of the adjacent approach ramps to avoid any visible stepping in elevation. A suitably robust wire finish and the granite colour and size shall be proposed by the contractor for approval by the Architect.

CAMLEY STREET NATURAL PARK

NOTES

Moxon Architects Limited

This drawing is copyright. All rights reserved.  
Do not scale from this drawing: work from figured dimensions only.

This drawing establishes the architectural intent of all visible elements. All details shall be finalised by the Contractor subject to approval by the Architect. For structural information refer to Structural Engineer's Drawings and Specification.

All stainless steel to be Lean Duplex grade 1.4162 (LDX2101). All welds to be ground smooth and finished to match adjacent surfaces. All surfaces shall be shot peened to achieve a consistent and uniform finish with a surface roughness Ra value of <0.5 micron. The shot peening media shall comply with AMS 2430 and be stainless steel, glass or ceramic. The finish shall be equivalent to Peentex F174 Grade by Metal Improvement Company. All stainless steel finishing shall take place within a controlled workshop environment after fabrication and weld cleaning.

For mild steel protection refer to Structural Engineer's spec. In addition to the specified performance requirements:

- All painted mild steel surfaces shall feature a 'dark grey / anthracite' coloured high build epoxy MIO (Micaeous Iron Oxide) finish.
- The approach ramp, bridge deck surface and adjacent inner trough upstand faces shall feature a visually seamless 'BRIDGEMASTER' resin bonded aggregate finish. The aggregate size shall be 1-3mm and the colour shall be 'silver flint', both subject to approval by the Architect.

All fencing timber to be sustainably sourced tropical hardwood suitable to a marine environment. Acceptable species include Ipe, Cumaru and Iroko. All edges and corners shall feature a 1mm chamfer and all faces shall be sanded smooth.

200-300mm random length x 100mm width bush hammered Millenium Mauve (85%) and Millenium Pink (15%) granite stone setts

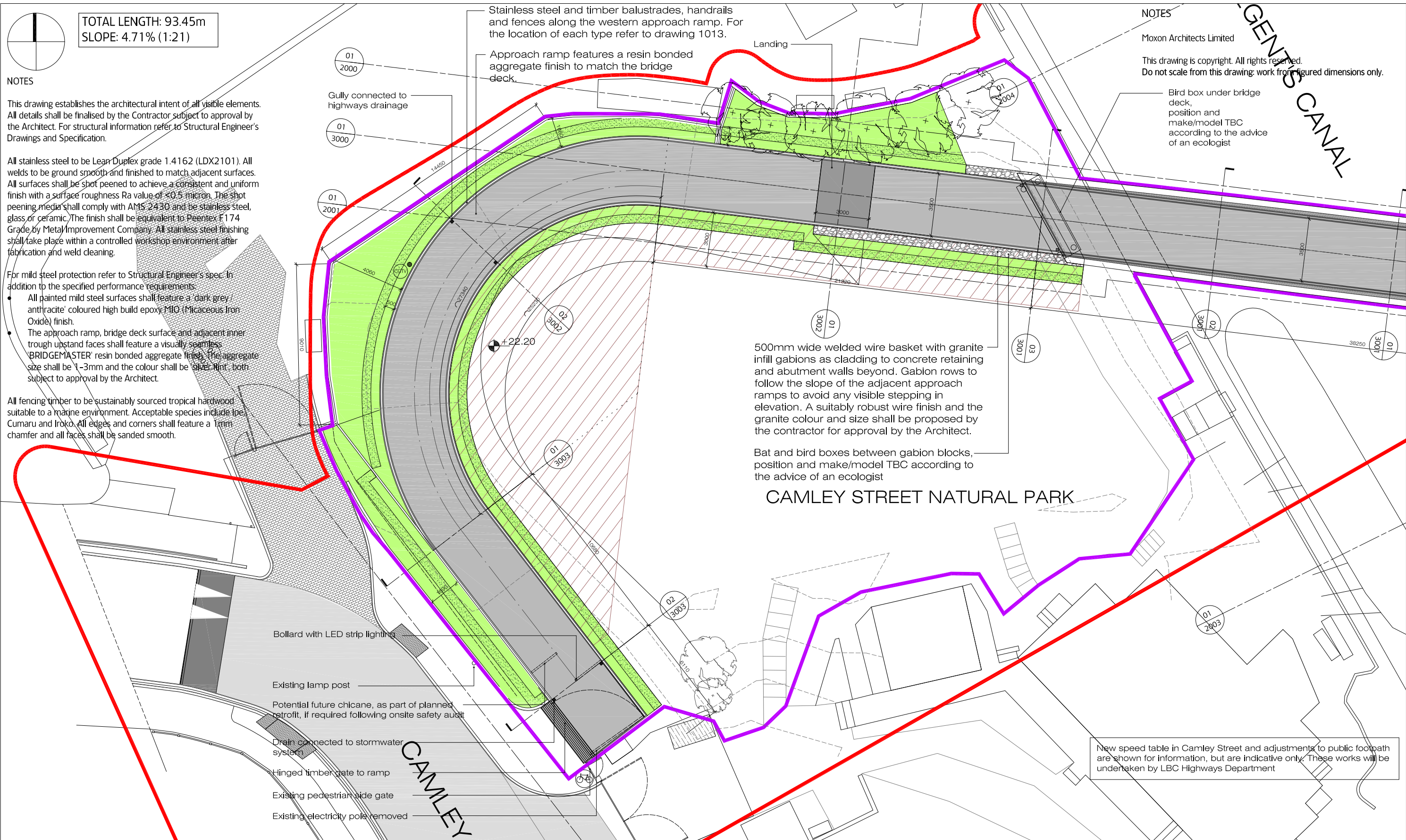
WHARF ROAD

MOXON

LONDON  
Great Western Studios, 65 Alfred Road, London W2 5EU  
t: 0207 034 0088 | f: 0207 034 0099  
SCOTLAND  
Ardoch, Crathie, Aberdeenshire AB35 5UN  
m: 0774 061 9198  
mail@moxonarchitects.com | www.moxonarchitects.com







**NOTES**

This drawing establishes the architectural intent of all visible elements. All details shall be finalised by the Contractor subject to approval by the Architect. For structural information refer to Structural Engineer's Drawings and Specification.

All stainless steel to be Lean Duplex grade 1.4162 (LDX2101). All welds to be ground smooth and finished to match adjacent surfaces. All surfaces shall be shot peened to achieve a consistent and uniform finish with a surface roughness Ra value of <0.5 micron. The shot peening media shall comply with AMS 2430 and be stainless steel, glass or ceramic. The finish shall be equivalent to Peentex F174 Grade by Metal Improvement Company. All stainless steel finishing shall take place within a controlled workshop environment after fabrication and weld cleaning.

For mild steel protection refer to Structural Engineer's spec. In addition to the specified performance requirements:

- All painted mild steel surfaces shall feature a 'dark grey / anthracite' coloured high build epoxy MIO (Micaceous Iron Oxide) finish.
- The approach ramp, bridge deck surface and adjacent inner trough upstand faces shall feature a visually seamless 'BRIDGEMASTER' resin bonded aggregate finish. The aggregate size shall be 1-3mm and the colour shall be 'silver flint', both subject to approval by the Architect.

All fencing timber to be sustainably sourced tropical hardwood suitable to a marine environment. Acceptable species include Ipe, Cumaru and Iroko. All edges and corners shall feature a 1mm chamfer and all faces shall be sanded smooth.

**NOTES**

Moxon Architects Limited

This drawing is copyright. All rights reserved.  
Do not scale from this drawing: work from figured dimensions only.

Bird box under bridge deck, position and make/model TBC according to the advice of an ecologist

500mm wide welded wire basket with granite infill gabions as cladding to concrete retaining and abutment walls beyond. Gabion rows to follow the slope of the adjacent approach ramps to avoid any visible stepping in elevation. A suitably robust wire finish and the granite colour and size shall be proposed by the contractor for approval by the Architect.

Bat and bird boxes between gabion blocks, position and make/model TBC according to the advice of an ecologist

## CAMLEY STREET NATURAL PARK

New speed table in Camley Street and adjustments to public footpath are shown for information, but are indicative only. These works will be undertaken by LBC Highways Department

**01** PROPOSED BRIDGE RAMP PLAN  
SCALE 1:200 @ A3

### KEY:

- CCTV Mast
- Polite cyclists welcome sign
- Granite Stone Setts
- Gabion block retaining wall
- Planting Zone
- Exclusion zone for future LWT visitors centre
- Reserved matters submission boundary
- OPP Boundary

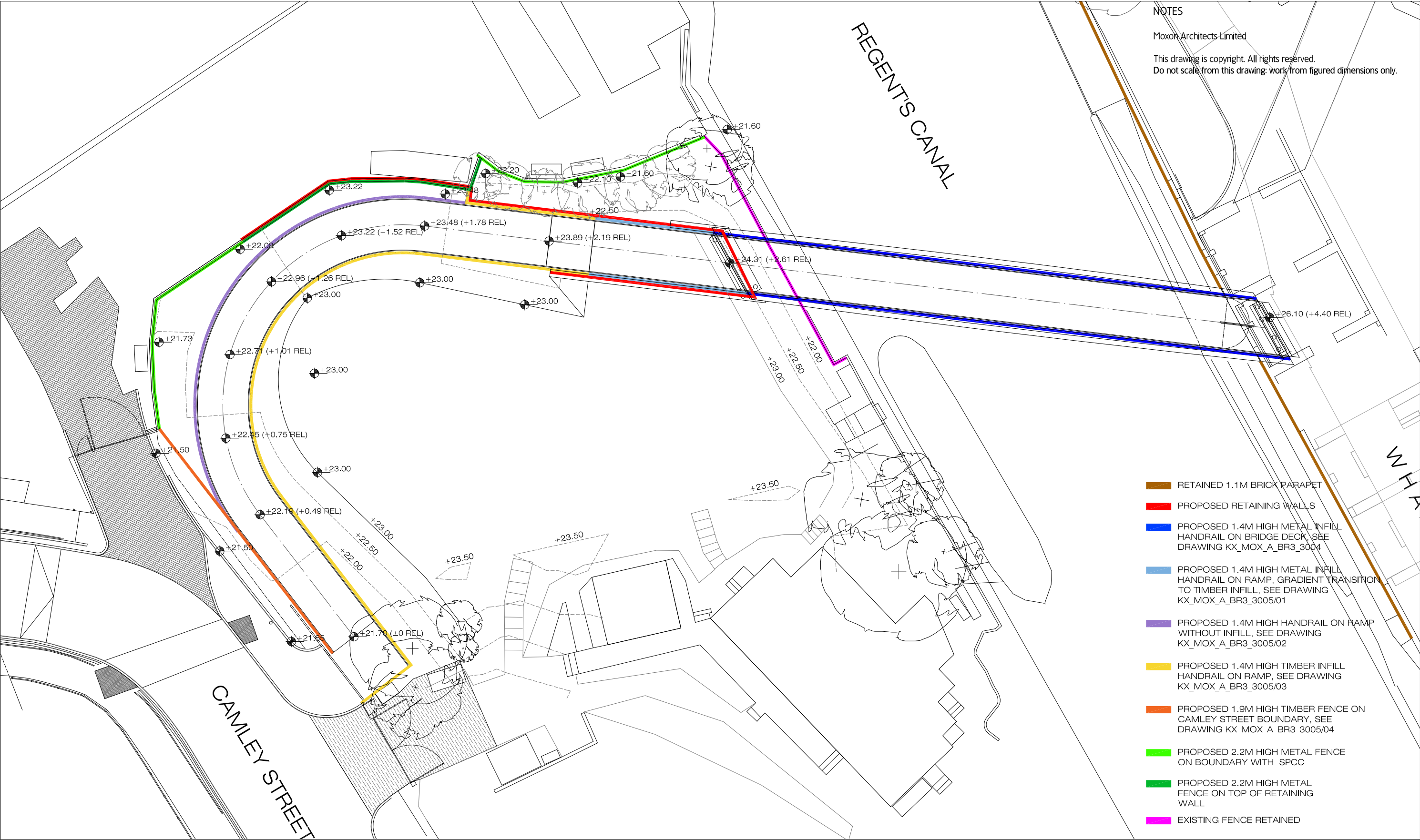
**MOXON**

LONDON  
Great Western Studios, 65 Alfred Road, London W2 5EU  
t: 0207 034 0088 | f: 0207 034 0099  
SCOTLAND  
Ardoch, Crathie, Aberdeenshire AB35 5UN  
m: 0774 061 9198  
mail@moxonarchitects.com | www.moxonarchitects.com

PROJECT TITLE		CAMLEY BRIDGE			
DRAWING TITLE		PROPOSED BRIDGE RAMP PLAN - SPECIFICATION			
DWG STATUS		FOR INFORMATION			
DRAWN	TB AH	FILE	545	DATE	28.09.15
CHECKED	BMA	JOB NO.	545	SCALE	1:200 @ A3
DWG NO.	KX_MOX_A_BR3_1007_B				







NOTES

Moxon Architects Limited

This drawing is copyright. All rights reserved.  
Do not scale from this drawing: work from figured dimensions only.

- RETAINED 1.1M BRICK PARAPET
- PROPOSED RETAINING WALLS
- PROPOSED 1.4M HIGH METAL INFILL HANDRAIL ON BRIDGE DECK, SEE DRAWING KX\_MOX\_A\_BR3\_3004
- PROPOSED 1.4M HIGH METAL INFILL HANDRAIL ON RAMP, GRADIENT TRANSITION TO TIMBER INFILL, SEE DRAWING KX\_MOX\_A\_BR3\_3005/01
- PROPOSED 1.4M HIGH HANDRAIL ON RAMP WITHOUT INFILL, SEE DRAWING KX\_MOX\_A\_BR3\_3005/02
- PROPOSED 1.4M HIGH TIMBER INFILL HANDRAIL ON RAMP, SEE DRAWING KX\_MOX\_A\_BR3\_3005/03
- PROPOSED 1.9M HIGH TIMBER FENCE ON CAMLEY STREET BOUNDARY, SEE DRAWING KX\_MOX\_A\_BR3\_3005/04
- PROPOSED 2.2M HIGH METAL FENCE ON BOUNDARY WITH SPCC
- PROPOSED 2.2M HIGH METAL FENCE ON TOP OF RETAINING WALL
- EXISTING FENCE RETAINED

**MOXON**

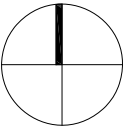
LONDON  
Great Western Studios, 65 Alfred Road, London W2 5EU  
t: 0207 034 0088 | f: 0207 034 0099

SCOTLAND  
Ardoch, Crathie, Aberdeenshire AB35 5UN  
m: 0774 061 9198  
mail@moxonarchitects.com | www.moxonarchitects.com

PROJECT TITLE		CAMLEY BRIDGE					
DRAWING TITLE		RETAINING WALLS AND FENCE LINES					
DWG STATUS		FOR INFORMATION					
DRAWN	AH, TB	FILE	545	DATE	24.04.15		
CHECKED	BMA	JOB NO.	545	SCALE	1:250 @ A3		
DWG NO.	KX_MOX_A_BR3_1013_F						

01 RETAINING WALLS AND FENCE LINES

SCALE 1:250@ A3







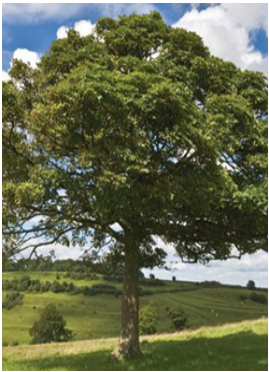




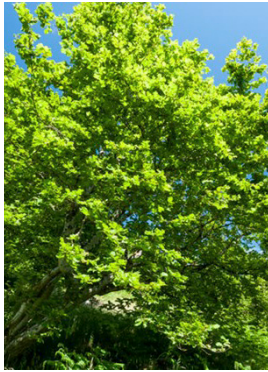
Planting Palette:   1a. Camley Street Side Defensive Planting

---

Hedge Planting



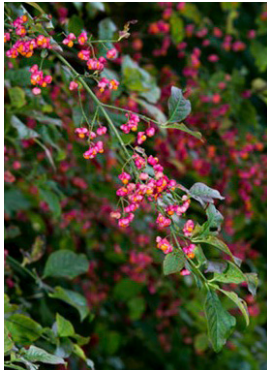
Acer Campestre  
(Field Maple)



Corylus Avellana  
(Hazel)



Crataegus Monogyna  
(Hawthorn)



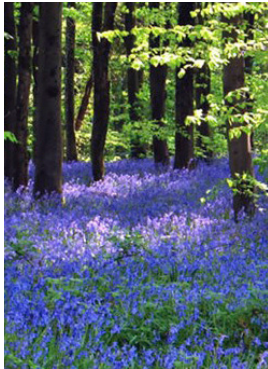
Euonymus Europaea  
(Spindle)

Planting Palette: 1b. Camley Street Side

Ground Cover



Hedera Helix  
(Ivy)



Hyacinthoides Non-Scripta (Bluebell)



Lamiaeum Galeobdolon  
(Yellow Archangel)



Digitalis Purpurea  
(Foxglove)



Silene Dioica  
(Red Campion)



Stellaria Holostea  
(Greater Stitchwort)



Luzula Forsteri  
(Southern Wood-Rush)



Galanthus Nivalis  
(Snowdrop)



Narcissus  
(Daffodil)



Anemone Nemorosa  
(Wood Anemone)



# Planting Palette: 2. Boundary with SPCC

## General Ground Cover



Galium odoratum  
(Sweet Woodruff) - 10%



Dryopteris Filix-Mas  
(Male Fern) - 10%



Hedera Helix  
(Ivy) - 50%



Vinca Major  
(Greater Periwinkle) - 30%

## Green Wall (creepers on retaining walls)



Clematis



Lonicera  
(Honeysuckle)



Hedera Helix  
(Ivy)

## Group of Newly Planted Semi-Mature Trees



Carpinus Betulus  
(Hornbeam fastigiata)

Planting Palette:  2c. Defensive Planting along Bridge on North Side

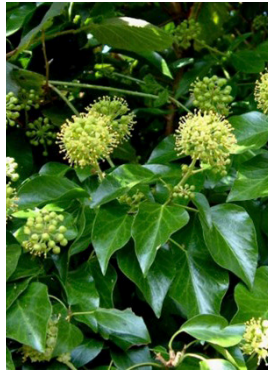
---



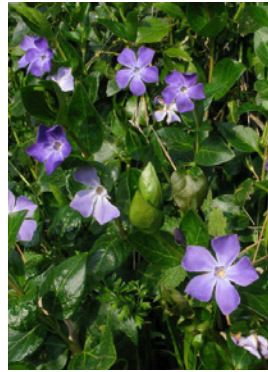
Prunus Spinosa  
(Blackthorn)



Crataegus  
(Hawthorn)



Hedera Helix  
(Ivy) - 50%



Vinca Major  
(Greater Periwinkle) - 30%



# Planting Palette: 3a. Defensive Planting along Bridge on South Side

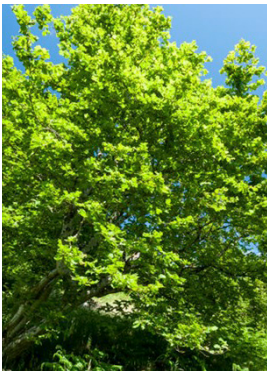
## Hedge Planting



Prunus Spinosa  
(Blackthorn)



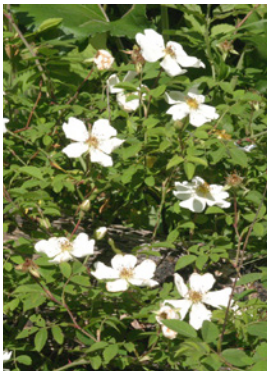
Crataegus  
(Hawthorn)



Corylus Avellana  
(Hazel)



Rosa Canina  
(Dog Rose)



Rosa Canina  
(Field Rose)

## Ground Cover



Digitalis Purpurea  
(Foxglove)



Silene Dioica  
(Red Campion)



Aquilegia  
(Columbine)



Euphorbia Amygdaloides  
(wood spurge)



Planting Palette:

3b. Temporary Planting on Levelled Ground in Camley Street Natural Park

(To be installed if proposed LWT visitor centre is not to be commenced within 18 months of bridge completion)

70% Mix Containing:



Agrostis Stolonifera  
(Creeping Bent)



Alopecurus Pratensis  
(Meadow Foxtail)



Alopecurus Geniculatus  
(Marsh Foxtail)



Anthoxanthum Odoratum  
(Sweet Vernal Grass)

10% Mix Containing:

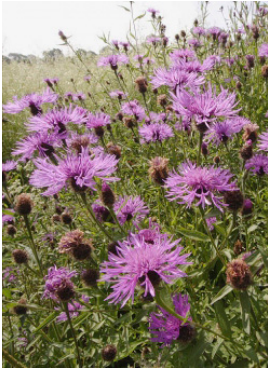


Deschampsia Cespitosa  
(Tufted Hair Grass)



Festuca Pratensis  
(Meadow Fescue)

20% Mix Containing:



Centaurea Nigra  
(Common Knapweed)



Rumex Acetosa  
(Common Sorrel)



Lotus Pedunculatus  
(Greater Bird's-Foot Trefoil)



Ranunculus Acris  
(Meadow Buttercup)



Filipendula Ulmaria  
(Meadowsweet)



Lathyrus Pratensis  
(Meadow Vetchling)



Plantago Lanceolata  
(Ribwort Plantain)



Vicia Cracca  
(Tufted Vetch)



Achillea Millefolium  
(Yarrow)



# King's Cross

4 Stable Street  
London  
N1C 4AB

T +44 (0)20 3664 0200  
[www.kingscross.co.uk](http://www.kingscross.co.uk)