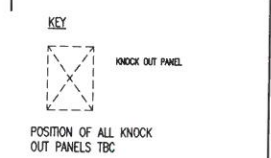


- Notes**
1. ALL DIMENSIONS ARE IN MILLIMETRES AND LEVELS IN METRES.
  2. THIS DRAWING IS TO BE READ IN CONJUNCTION WITH RELEVANT ARCHITECTS AND ENGINEERS DRAWINGS AND SPECIFICATIONS.
  3. THIS DRAWING HAS BEEN PRODUCED ELECTRONICALLY AND MAY HAVE BEEN PHOTO REPRODUCED OR ENLARGED WHEN COPIED. PLEASE DO NOT RELY ON ANY SCALES QUOTED. WORK ONLY TO DIMENSIONS (DO NOT SCALE). ALL DIMENSIONS TO BE CHECKED ON SITE. ANY ERRORS OR OMISSIONS TO BE REPORTED TO THE ENGINEER IMMEDIATELY.
  4. KNOCK OUT PANELS TO BE SUPPORTED BY POSTS IF REQUIRED.
  5. C/S DONOTES COLUMN SIZES



**MASONRY SUPPORTS**

ANCON CHANNELS TO BE PROVIDED AT THIS LEVEL WHERE REQUIRED TO SUPPORT A MINIMUM LOAD OF 8.5kN/m U.L.O. FOR LOCATIONS AND DETAILS REFER TO ANCON DRAWINGS.

**C.D.M.**

SIGNIFICANT RISKS AND HAZARDS:

KEY DESIGN DECISIONS TO REDUCE OR ELIMINATE HAZARDS:

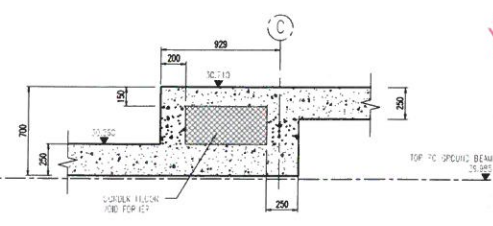
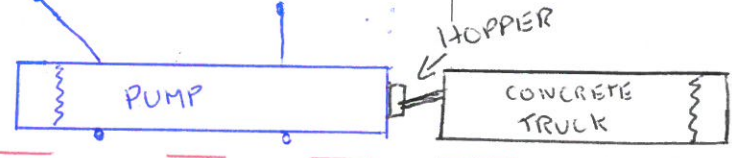
79 CAMDEN RD

WORK IN PROGRESS

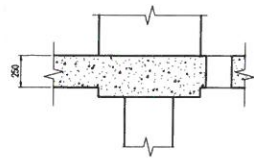
HOARDING LINE

100 ST PANCRAS WAY.

MAX ↑ 5 meters ↓



SECTION 40-40



SECTION 41-41

**SERVICE HOLE SCHEDULE**

Hole Ref	Size
S01	200 x 200
S02	300 x 300
S03	300 x 300
S04	600 x 200
S05	500 x 200
S06	200 x 450
S07	2540 x 200

**COLUMN SCHEDULE**

COLUMN	SIZE
C01	200x200 RC
C02	200x200 RC
C03	200x200 RC
C04	200x200 RC
C05	300x300 RC
C06	200x200 RC
C07	150x150x5 DSHS
C08	300x300 RC
C09	300 DA
C10	200x200 RC
C11	300x300 RC
C12	200x200 RC

**WALL SCHEDULE**

WALL	SIZE
W01	150 W.C. UPSTAND
W02	150 W.C. WALL
W03	225 W.C. WALL
W04	200 W.C. WALL
W05	200 W.C. UPSTAND

**BEAM SCHEDULE**

Type	Mark	Type
B01	200 x 250 R.C.	
B02	250 x 250 R.C.	
B03	1000 x 250 R.C.	
B04	200 x 250 R.C.	

**REVISIONS**

No.	Date	By	Details Of Revision
C1	27.07.12	AH	CONSTRUCTION ISSUE
F7	06.11.14	AM	SERVICE HOLES & SERVICE HOLE SCHEDULE ADDED. MASONRY SUPPORT NOTE ADDED
W01	29.08.14	AM	W01 MARK IN PROGRESS
T5	08.08.14	AM	COLUMNS REVERSED & MOVED TO SUIT LATEST ARCHITECTS DRAWINGS. ISSUED FOR STAKE
T5	14.07.14	AM	ARCHITECTS SHIP DRAWING ALL AS CLOURED
T4	04.07.14	AM	COLUMNS OMFITTED, MOVED AND ADDED
T3	03.07.14	AM	SECTION MARKS & LEFT ADDED. COLUMNS REVERSED. TENDER ISSUE
T2	18.06.14	AM	ORDS REVERSED - STAGE D - TENDER ISSUE
T1	02.06.14	AM	TENDER ISSUE
P2	30.05.14	AM	SCHEME UPDATED
P1	08.12.13	AM	FIRST ISSUE

**BARRATT LONDON**

Project: 79 CAMDEN ROAD

**Walsh Associates**  
Consulting Civil & Structural Engineers  
31 Laburnum Street, London, SE1 2LX  
Tel: +44 (0)20 7599 8800  
Fax: +44 (0)20 7599 8801  
Email: london@walshgroup.co.uk

**CONSTRUCTION**

Drawn: AH Date: 03/12/13 Scale: 1:100  
Checked: TF Date: 03/12/13  
Project: 79 CAMDEN ROAD

Sheet: C1