

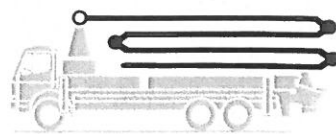
36 TOM

Data sheet BP 3186-7 GB



# Truck-mounted concrete pump

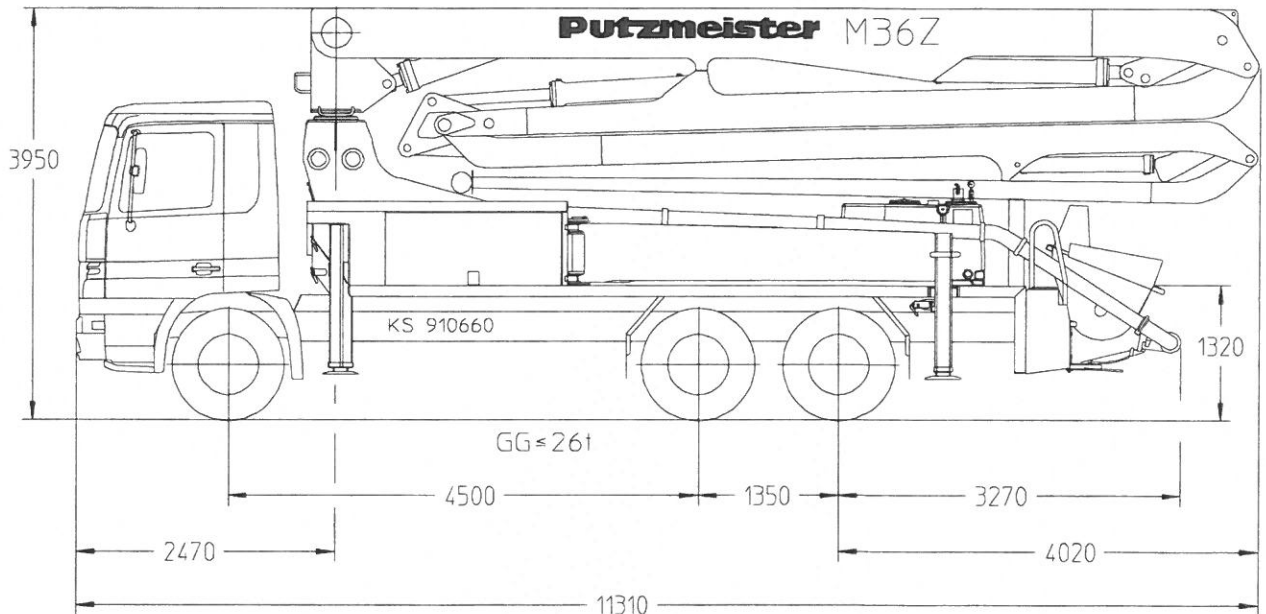
# BSF 36-4.14 H



.16 H

.16 H LS

Output up to 160 m<sup>3</sup>/h  
Delivery pressure up to 130 bar



Note: Standard version. Dimensions and weights depend on truck, pump model and equipment.  
Dimensions in mm, MB-Actros 2632 as example

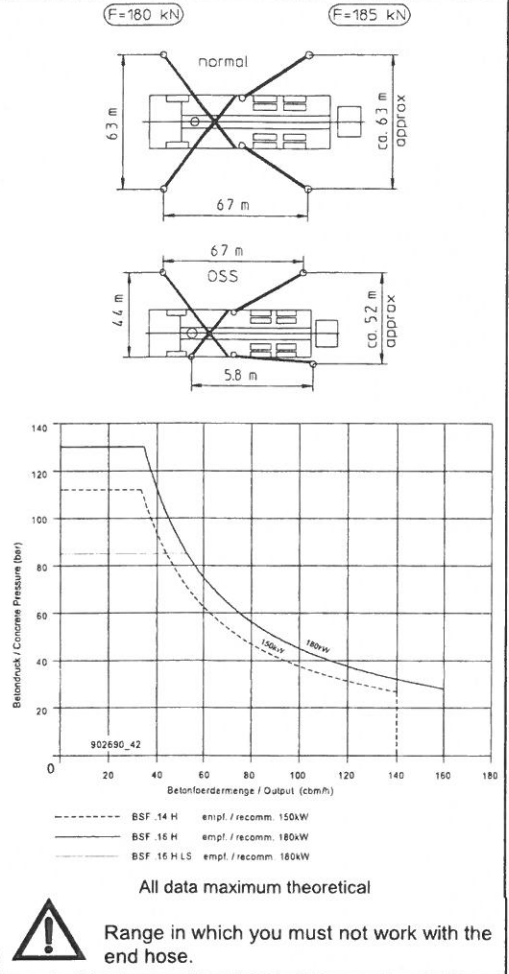
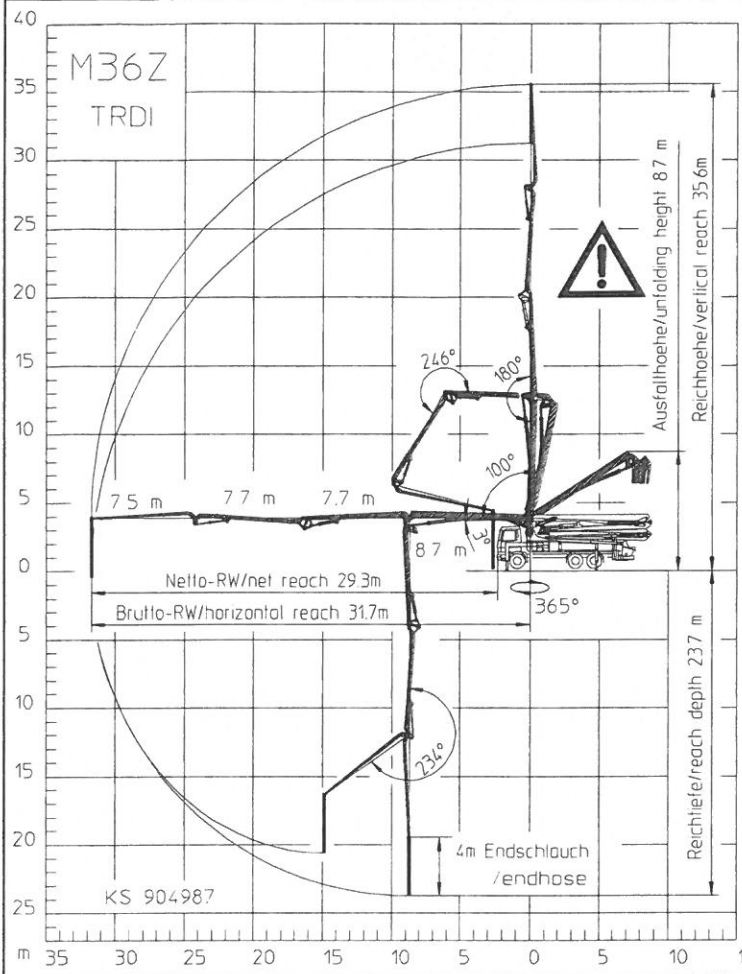
## Technical Data

Boom M 36-4		
Reach height	m	35.6
Horizontal reach	gross	m 31.7
	net	m 29.3
Reach depth max.	m	23.7
Unfolding height	m	8.7
End hose length	m	4
Number of arms		4
Folding system		Z-fold (Z)
Delivery line		DN 125/5.5

Pump		BSF	.14 H	.16 H	.16 H LS
Rod side	Output	m <sup>3</sup> /h	140	160	-
	Delivery pressure	bar	70	85	-
	Strokes	1/min.	27	31	-
Piston side	Output	m <sup>3</sup> /h	88	108	160
	Delivery pressure	bar	112	130	85
	Strokes	1/min.	17	21	26
	Delivery cylinder	∅ mm	230	230	250
	Stroke	mm	2100	2100	2100

Delivery line boom max. 85 bar.  
All data maximum theoretical.

**Reach information diagram, Support, Performance diagram**



**Delivery scope**

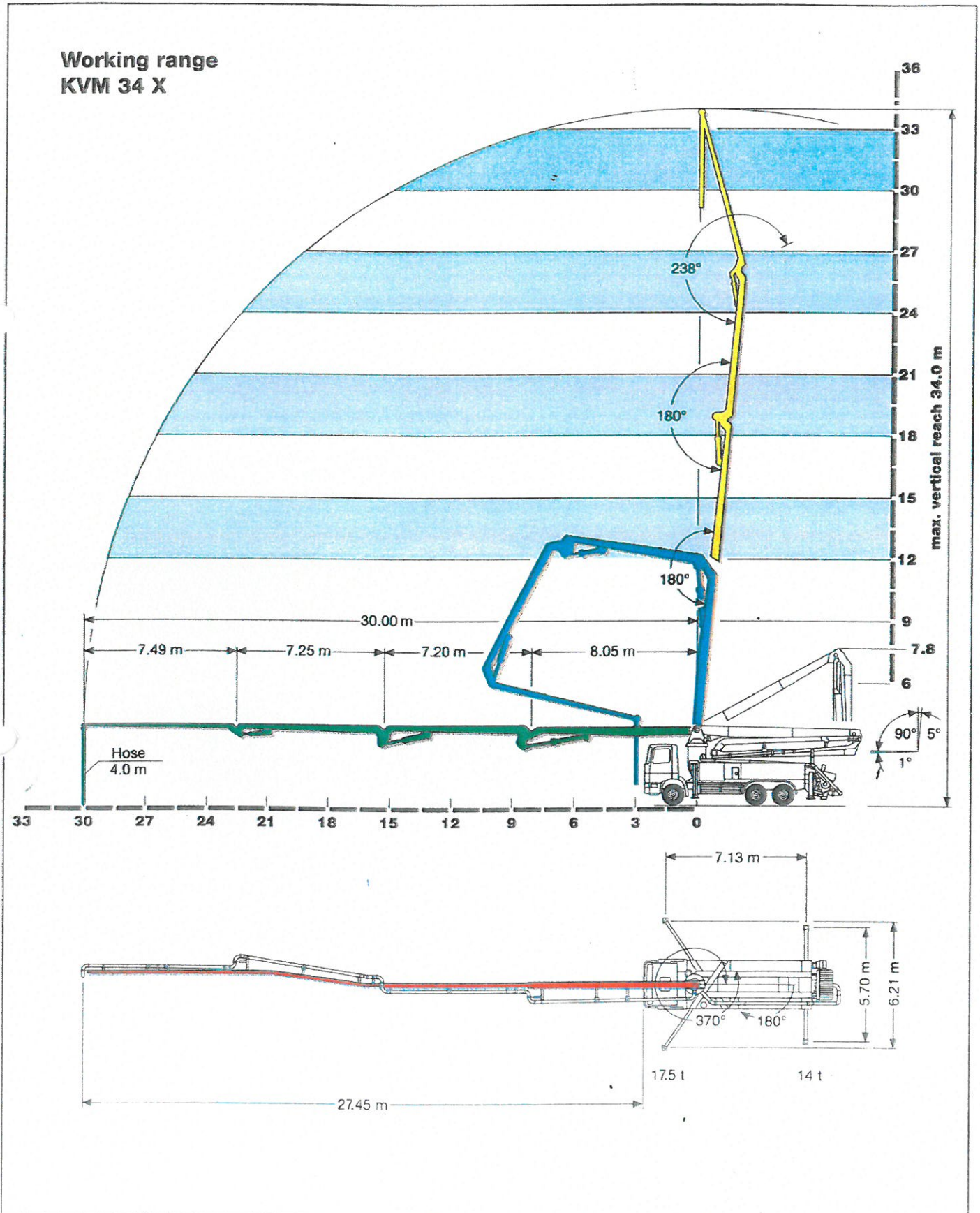
	Standard	Options Package *	Options Package Plus
support plates 4x in magazine	●		
concrete hopper RS 900 with agitator	●		
diagnose interfaces, central for electric and hydraulic	●		
EOC (Ergonic output control)	●		
EPS (Ergonic pump system)	●		
EGD (Ergonic Graphic Display)	●		
radio remote control with display	●		
remote control with 40 m cable	●		
central lubrication strip hopper	●		
rubber collar	●		
painting: arm assembly RAL 3020 signalred	●		
painting: pump MB 1227 chrome yellow	●		
flushing water pump 160 l/min 25 bar	●		
water tank	●		
concrete line DN125/5.5, 133x4	●		
concrete line DN125/5.5, PM 22 twin layer		●	
concrete line DN125/5.5, PM 252 Proline			●
support plates 4x + timber wood 8x600 in magazine		●	●
traffic permission kit		●	●
splash guard foldable		●	●
lighting in toolbox		●	●
central lubrication hopper, electrical		●	●
horn at the boom		●	●
working search light on boom for hopper illumination			●
spotlights 4x for illumination support area			●
flashlights for 4 support legs front and rear			●
high pressure water pump 100 bar with dry-run protection			●
vibrator, electrical			●
hard metal wear parts kit			●

\* recommended in Europe  
special: Ergonic Boom Control EBC  
One Side Support OSS

Please see quotation for exact serial delivery scope.

ЗАМ.    РАТ.

The placing boom: roll-and-fold system,  
X-type stabilizers only 6.2 m wide at front,  
vertical reach 34 m!



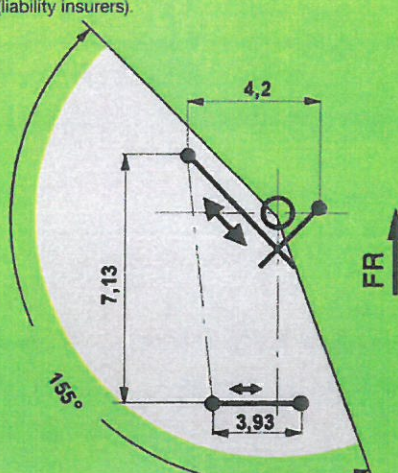


34m fat

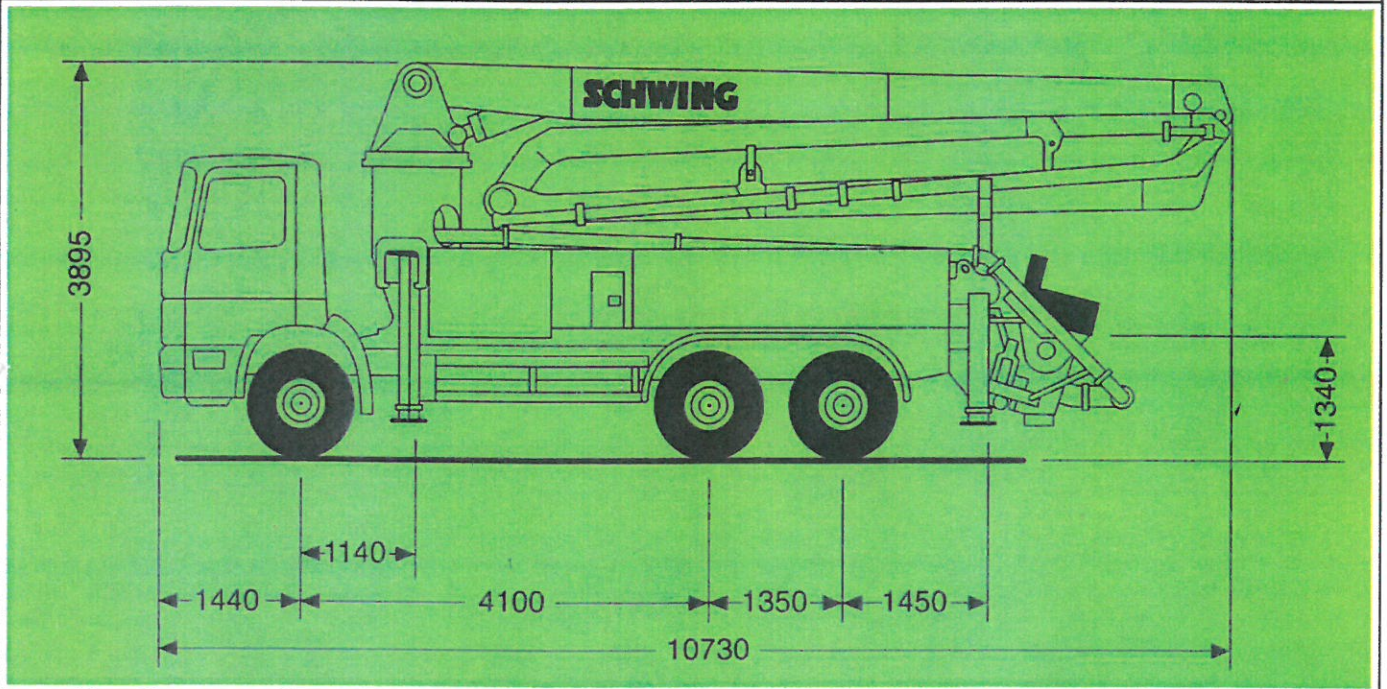
**Minimum stroke rate under full load.  
Maximum output with a steady boom.  
Optimum service life of wearing parts.**

Technical Data				
Battery: P 2023 – 110/75				
Drives		380 l/min	535 l/min	636 l/min
Max. theor. output	m <sup>3</sup> /h	96	138	164
Max. stroke rate	min <sup>-1</sup>	19	28	33
Max. concrete pressure	bars	85	85	85
max. output and max. pressure cannot be reached simultaneously				
Placing boom		KVM 34 X		
Delivery line diameter	∅	DN 125		
Length of end hose	m	4		
Vertical reach	m	34		
Horizontal reach from center of rotation	m	30		
Slewing range		550°		

**Optional:**  
 EASy – the Enhanced Access-System for SCHWING truck mounted concrete pumps.  
 Optimum flexibility with minimum space requirement on site.  
 High level of tested safety acc. Category 3 of EN 954-1 and with certification from German BIA (liability insurers).



EASy possible on both sides.  
 Reduced footprint "right" as above mirror inverted.



**SCHWING**

SCHWING GmbH  
 P.O. Box 200362  
 D-44647 Herne  
 ☎ 023 25/987-0  
 Fax 023 25/72922  
 E-Mail: info@schwing.de  
 http://www.schwing.de

Subject to modifications in the interest of technical progress. The exact scope of standard delivery is detailed in the offer.