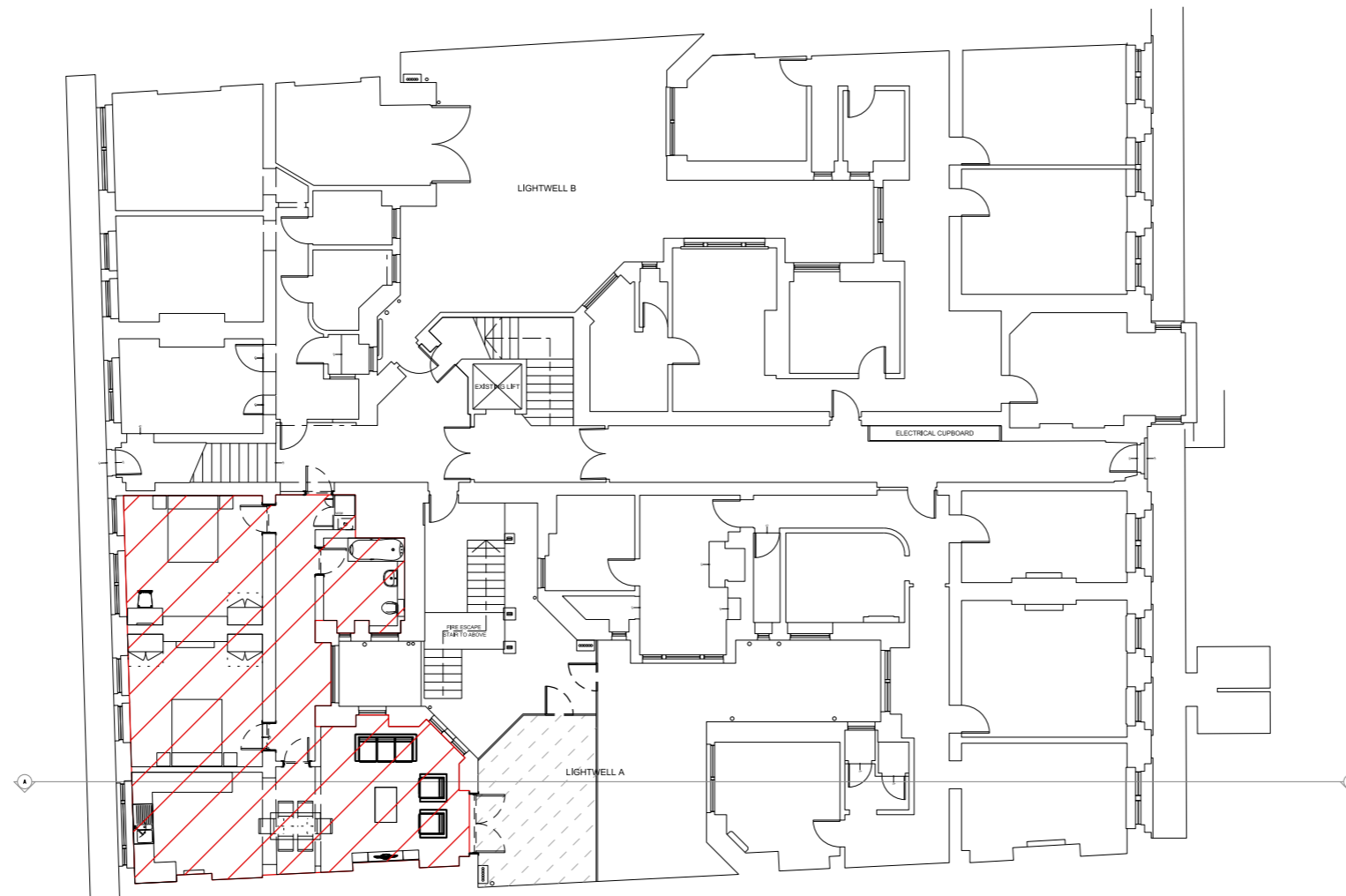


Do not scale from this drawing
All dimensions to be checked on site

Notes:
PROPOSED BASEMENT FLOOR PLAN

FLAT 3: 92.2m2



Location of Flat 3 shown hatched

Amendments:
REV #, 2015-11-11.
REV A, 2016-01-14-Planning Issue

Drawing type:
PLANNING

Client:
L. B. CAMDEN

Project:
GREAT RUSSELL MANSIONS

Title:
PROPOSED BASEMENT LOCATION PLAN - FLAT 3

Scale: 1:200@A3 Date: 11/11/2015

Drawn: JMArchitects Checked: SB

Drg.no: 5922-S(1)001

Rev: A

Heritage Surveys Ltd.

Heritage Surveys Limited
20 Hanover Square
London
W1S 1JY
www.heritage-surveys.com