

— Site Boundary

Historic England Listed Building listing:

This building is listed under the Planning (Listed Buildings and Conservation Areas) Act 1990 as amended for its special architectural or historic interest.

List entry Number: 1246149

Grade: II

Date first listed: 28-Mar-1969

English Heritage Building ID: 477920

Authority: London Borough of Camden

GV II

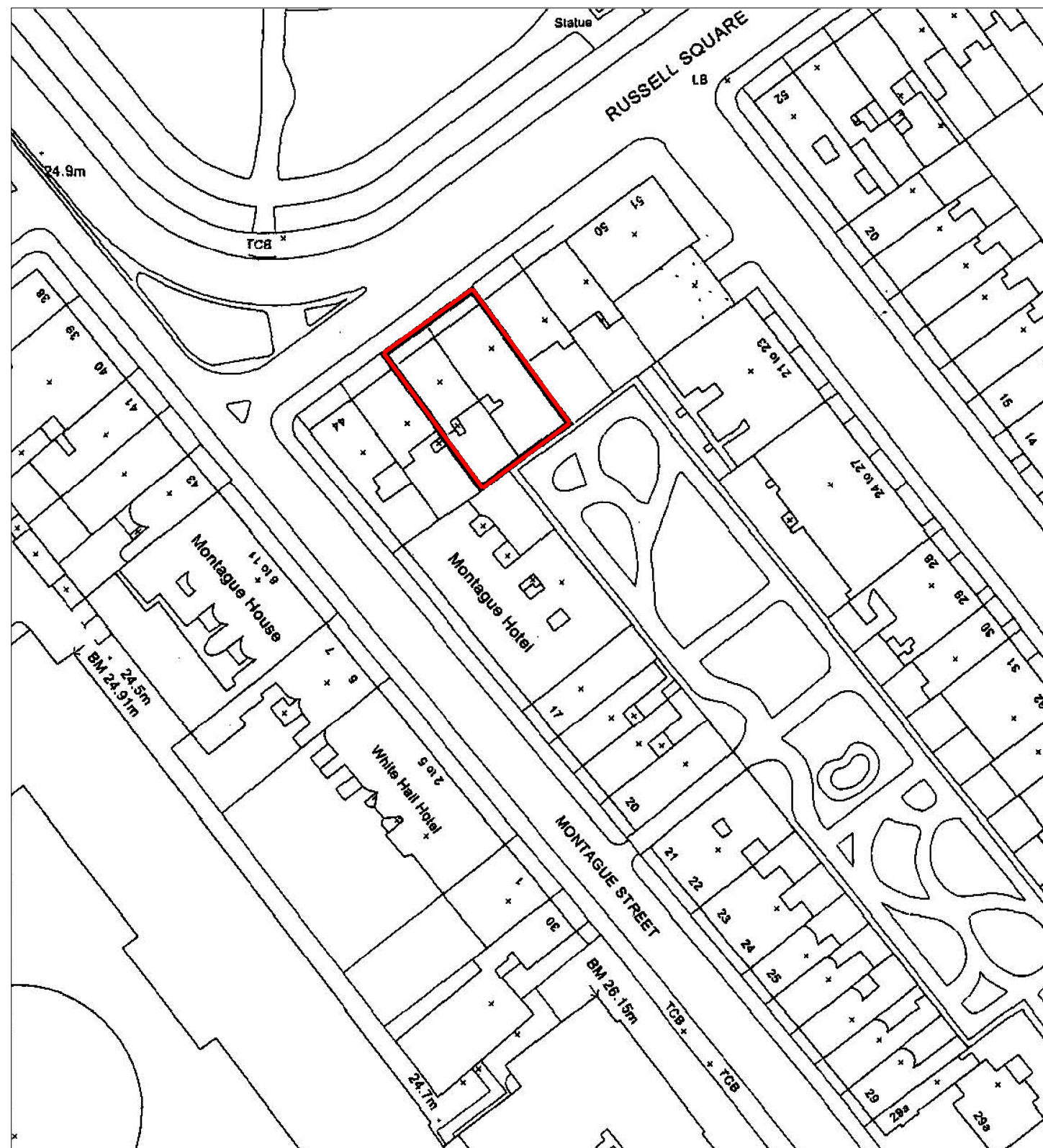
Terrace of 6 houses, formerly a symmetrical terrace similar to Nos 52-60 (qv); with one surviving, projecting end bay (No.44) and central bays (Nos 47-49). c1800-03. By James Burton, altered c1898 by PE Pilditch. Multi-coloured stock brick with rusticated stucco ground floors and slated mansard roofs with dormers. Later terracotta dressings.

EXTERIOR: 3 storeys, attics and dormers. Projecting bays 4 storeys. 3 windows each, No.44 with return of 4 blind windows to Montague Street. Round-arched doorways with pilaster-jambs, cornice-heads, fanlights, sidelights and double panelled doors; Nos 44, 47 and 48 with square-headed terracotta surrounds. Recessed, architraved casement and sash windows. 1st floor with cornices and central windows with pediments; Nos 47-49 central windows 3-light canted bays. Continuous cast-iron balconies to 1st floor windows. Projecting bays with 3rd floor cornice and enriched frieze below. Parapets. Dormers with terracotta cornices; projecting bays with alternating triangular and semicircular pediments, Nos 45 and 46 with semicircular pediments to centre dormers only.

INTERIORS: not inspected.

SUBSIDIARY FEATURES: attached mid C19 cast-iron railings to areas.

HISTORICAL NOTE: the Duke of Bedford was inspired to add terracotta dressings to these houses following the building of The Russell Hotel (qv).



Job Name			
46-47 Russell Square			
London			
WC1			
The Bedford Estates			
Drawing Title			
Site Plan			
Status			
Planning			
Date	Sheet By	Scale & Size	
24/07/15 AH		1:500 @A1	
Job Number	Code	Drawing Number	Rev
4054	D	(--)	01 00
DLG Architects LLP			
128 Southwark Street			
London SE1 0SW			
t +44(0)20 7620 1236			
f +44(0)20 7928 4416			
london@dlgarchitects.com			
dlgarchitects.com			