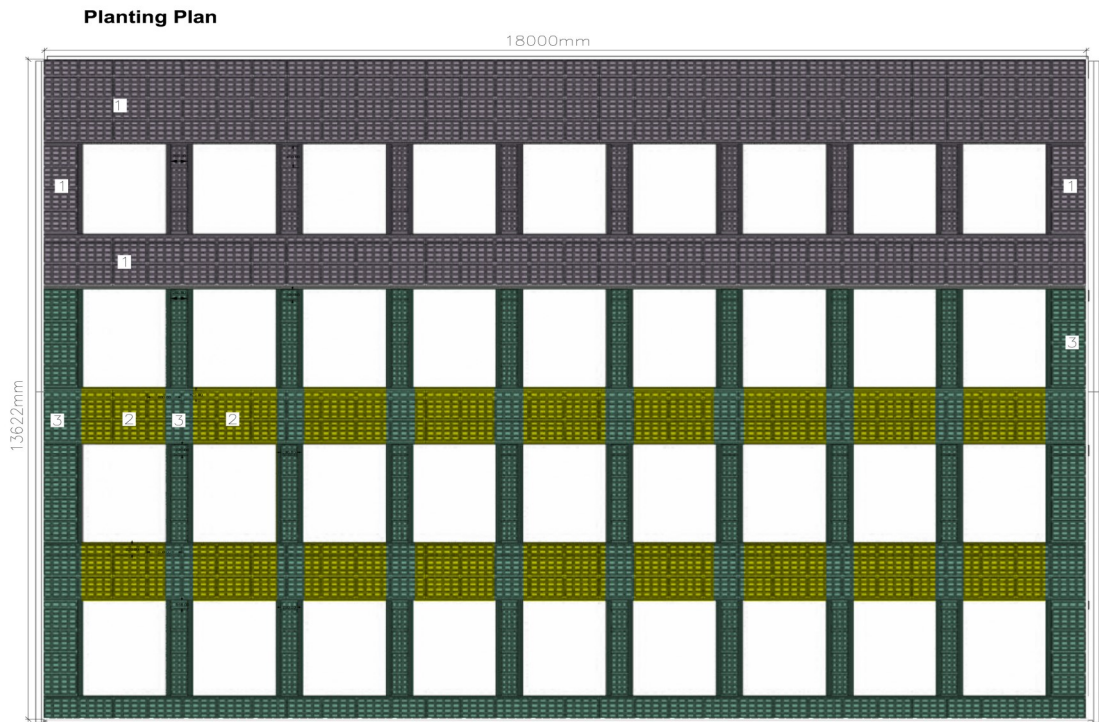


Condition 3—Details of Landscape Works

3b) Details of Planting plans including Cultivation and other operations associated with plant establishment

9) L300 Rev D Planting Plan

Plants were chosen which have the potential to mitigate air quality (Euonymus ‘Darts Blanket’ and Pachysandra terminalis in particular), as well as an ecological value to pollinating insects, (Pachysandra Terminalis and Vinca ‘Gertrude Jekyll’ in particular) while being compact to provide a manicured appearance.



Planting Area	Area m2	Plant Name	%	Quantity (60 plant/m2)	Notes
1	54.6	Armeria maritima	15	491	In groups of 3-5 randomly planted.
		Euonymus fortunei 'Dart's Blanket'	20	655	In groups of 2-3 randomly planted.
		Hedera helix 'Green Wonder'	10	328	In groups of 1-2 randomly dotted throughout.
		Heuchera 'Green Spice'	15	491	In groups of 3-5 randomly planted.
		Pachysandra terminalis 'Green Carpet'	15	491	In groups of 1-2 randomly dotted throughout.
		Polypodium vulgare	15	491	In groups of 2-3 randomly planted.
		Vinca minor 'Bowles Purple'	10	328	In groups of 2-3 randomly planted.
2	37.25	Euonymus fortunei 'Dart's Blanket'	20	447	In groups of 3-5 randomly planted.
		Hedera helix 'Green Wonder'	10	224	In groups of 2-3 randomly planted.
		Liriope 'Monroe White'	15	335	In groups of 3-5 randomly planted.
		Pachysandra terminalis 'Variegata'	15	335	In groups of 3-5 randomly planted.
		Polypodium vulgare	15	335	In groups of 1-2 randomly dotted throughout.
		Sarcococca humilis	15	335	In groups of 3-5 randomly planted.
		Vinca minor 'Gertrude Jekyll'	10	224	In groups of 2-3 randomly planted.
3	30.35	Euonymus fortunei 'Dart's Blanket'	30	546	In groups of 2-3 randomly planted.
		Hedera helix 'Green Wonder'	20	364	In groups of 2-3 randomly planted.
		Pachysandra terminalis 'Green Carpet'	25	455	In groups of 2-3 randomly planted.
		Polypodium vulgare	25	455	In groups of 1-2 randomly dotted throughout.
Total Area		122.2	Total Plants	7932	

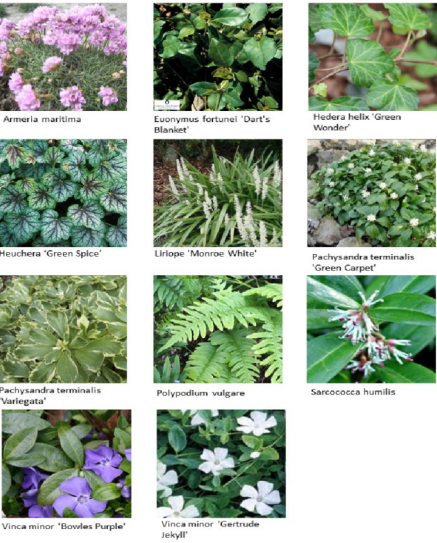
Planting Design Intention

The design accentuates the geometry of the building facade of horizontal bands between the floors and vertical stripes between the windows to soften the building frontage and display a fresh facade.

The matrix of plants is mainly of green tones throughout the wall, with the top floor accented with mauve blossoms and the remaining floor levels with white blossoms for year round interest.

Plants were also chosen to suit site conditions being fairly sheltered, with a west-facing aspect providing full sun to partial shade. All plants are fully hardy and evergreen to ensure no bare patches in winter months.

Plants: Indicative Images



Notes:
Plants subject to availability. Plant images specified here are indicative and for the purpose of graphic information. Dimensions and site survey information were provided by Biotechure Ltd. See Biotechure's drawing '0218 Synergy House Panel Layout'. Appropriate care should be taken when handling any plant material. Contractors are not to scale dimensions from this drawing.

Green Graphite Landscape Design

14 Smith Close
London
SE16 5PH
T: +44(0)20 7231 5344
Email: info@GreenGraphite.com
www.GreenGraphite.com

Client: **Biotechure Ltd**

Project: **Panatura Properties / Synergy House**

Description: **Living Wall Design - Exterior Planting Plan**

Status: **For Planning**

Scale: **1:750 A3**

Client Ref: **0218**

Job number: **624-41**

Drawing number: **L300**

Revision: **D**

Original size 50mmxA3 copyright Green Graphite Ltd

Revisions

D Revised plant list 8.12.15

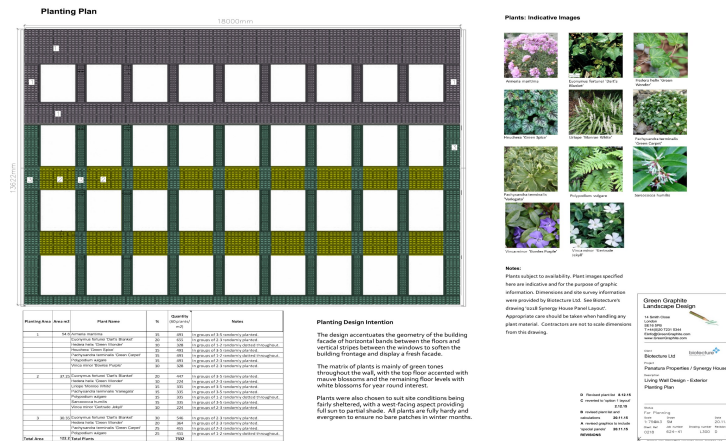
C reverted to 'option 1' layout 2.12.15

B revised plant list and calculations 20.11.15

A revised graphics to include 'special panels' 20.11.15

Condition 3—Details of Landscape Works

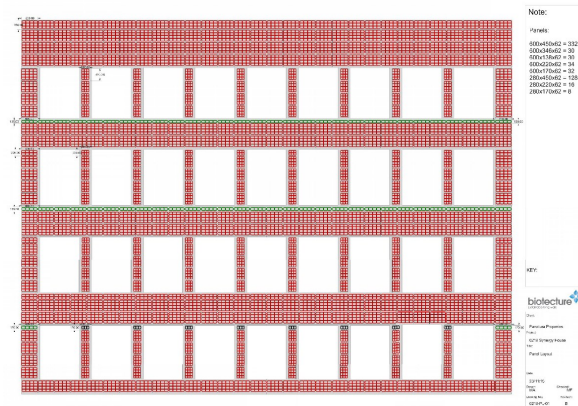
3b) Planting Plans including cultivation and other operations associated with plant establishment



1. Planting design for the living wall, based on site parameters and client preferences



3. The panels are planted in the nursery, based on the planting design



2. This is then translated into a panel layout



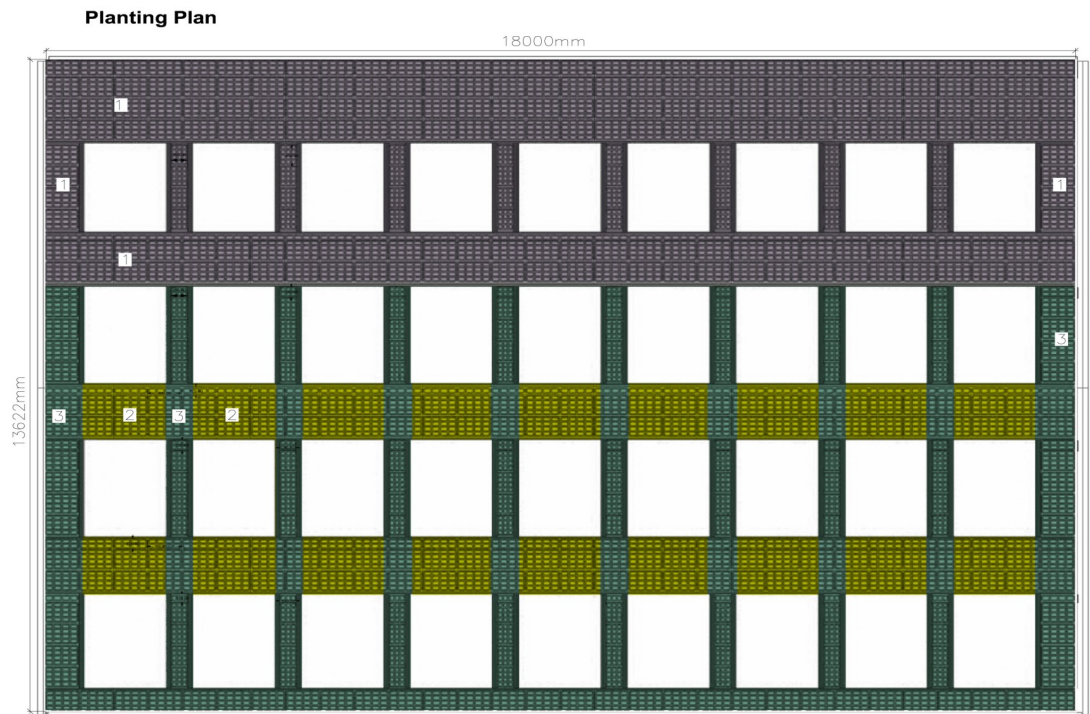
4. The plants grow for a minimum of eight weeks. They are then transported to site as planted tiles to give immediate impact. This will be done in the Spring to avoid the winter months

Condition 3—Details of Landscape Works

3b) Details of Planting plans including Cultivation and other operations associated with plant establishment

11) L300 Rev D Planting Plan

Plants were chosen which have the potential to mitigate air quality (Euonymus ‘Darts Blanket’ and Pachysandra terminalis in particular), as well as an ecological value to pollinating insects, (Pachysandra Terminalis and Vinca ‘Gertrude Jekyll’ in particular) while being compact to provide a manicured appearance.



Planting Area	Area m2	Plant Name	%	Quantity (60 plants/ m2)	Notes
1	54.6	Ammeria maritima	15	491	In groups of 3-5 randomly planted.
		Euonymus fortunei 'Dart's Blanket'	20	655	In groups of 2-3 randomly planted.
		Hedera helix 'Green Wonder'	10	328	In groups of 1-2 randomly dotted throughout.
		Heuchera 'Green Spice'	15	491	In groups of 3-5 randomly planted.
		Pachysandra terminalis 'Green Carpet'	15	491	In groups of 1-2 randomly dotted throughout.
		Polypodium vulgare	15	491	In groups of 2-3 randomly planted.
		Vinca minor 'Bowles Purple'	10	328	In groups of 2-3 randomly planted.
2	37.25	Euonymus fortunei 'Dart's Blanket'	20	447	In groups of 3-5 randomly planted.
		Hedera helix 'Green Wonder'	10	224	In groups of 2-3 randomly planted.
		Liriope 'Monroe White'	15	335	In groups of 3-5 randomly planted.
		Pachysandra terminalis 'Variegata'	15	335	In groups of 3-5 randomly planted.
		Polypodium vulgare	15	335	In groups of 1-2 randomly dotted throughout.
		Sarcococca humilis	15	335	In groups of 3-5 randomly planted.
		Vinca minor 'Gertrude Jekyll'	10	224	In groups of 2-3 randomly planted.
3	30.35	Euonymus fortunei 'Dart's Blanket'	30	546	In groups of 2-3 randomly planted.
		Hedera helix 'Green Wonder'	20	364	In groups of 2-3 randomly planted.
		Pachysandra terminalis 'Green Carpet'	25	455	In groups of 2-3 randomly planted.
		Polypodium vulgare	25	455	In groups of 1-2 randomly dotted throughout.
Total Area	122.2	Total Plants		7332	

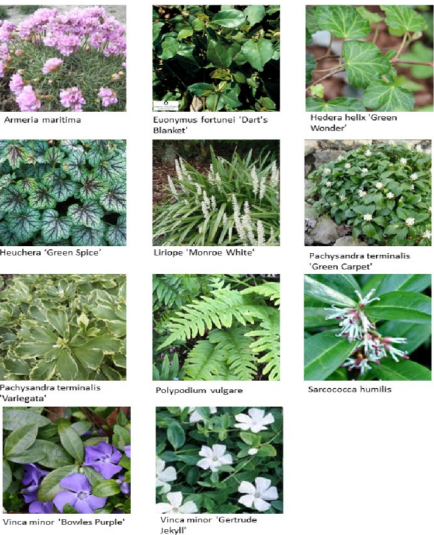
Planting Design Intention

The design accentuates the geometry of the building facade of horizontal bands between the floors and vertical stripes between the windows to soften the building frontage and display a fresh facade.

The matrix of plants is mainly of green tones throughout the wall, with the top floor accented with mauve blossoms and the remaining floor levels with white blossoms for year round interest.

Plants were also chosen to suit site conditions being fairly sheltered, with a west-facing aspect providing full sun to partial shade. All plants are fully hardy and evergreen to ensure no bare patches in winter months.

Plants: Indicative Images



Notes:

Plants subject to availability. Plant images specified here are indicative and for the purpose of graphic information. Dimensions and site survey information were provided by Biotecture Ltd. See Biotecture's drawing '0218 Synergy House Panel Layout'. Appropriate care should be taken when handling any plant material. Contractors are not to scale dimensions from this drawing.

D Revised plant list 8.12.15
C reverted to 'option 1 layout' 2.12.15
B revised plant list and calculations 20.11.15
A revised graphics to include 'special panels' 20.11.15
REVISIONS

Green Graphite Landscape Design

14 Smith Close
London
SE16 5PB
T+44(0)20 7231 5344
Einfo@GreenGraphite.com
www.GreenGraphite.com

Client: Biotecture Ltd
Project: Panatara Properties / Synergy House
Description: Living Wall Design - Exterior
Planting Plan

Status: For Planning
Scale: 1:750 A3 SM
Client Ref: 0218 Job number: 624-41 Drawing number: L300 D
Date: 20.11.15
Revision: 1
Original size 50mmx43 copyright Green Graphite Ltd

Condition 3—Details of Landscape Works

3c) Schedules of Plants noting species, quantity, density and positions

Zone 1: 54.6m²



Armeria maritima

15% of area, total plants= 491 In groups of



Euonymus fortunei 'Dart's Blanket'

20% of area, total plants= 655 In groups of



Hedera Helix 'Green Wonder'

10% of area, total plants = 328 in groups of
1-2 randomly dotted throughout



Heuchera 'Green Spice'

15% of area, total plants = 491 in
groups of 3-5 randomly Planted



Pachysandra terminalis 'Green Carpet'

15% of area, total plants = 491 in groups of 1-2
randomly dotted throughout



Polypodium vulgare

15% of area, total plants = 491 in groups of
2-3 randomly Planted



Vinca minor 'Bowles Purple'

10% of area, total plants = 328 in groups of
2-3 randomly planted

Condition 3—Details of Landscape Works

3c) Schedules of Plants noting species, quantity, density and positions

Zone 2: 37.25m²



Euonymus fortunei 'dart's blanket'
20% of area, total plants = 447 in groups of
3-5 randomly planted



Hedera helix 'Green Wonder'
10% of area, total plants = 224 in groups of



Liriope 'Monroe White'
15% of area, total plants = 335 in groups of
3-5 randomly planted



Pachysandra terminalis 'Variegata'
15% of area, total plants = 335 in groups
of 3-5 randomly planted



Polypodium vulgare
15% of area, total plants = 335 in groups of 1-2
randomly dotted throughout



Sarcococca humilis
15% of area, total plants = 335 in groups of
3-5 randomly planted



Vinca minor 'Gertrude Jekyll'
10% of area, total plants = 224 in groups of
2-3 randomly planted

Condition 3—Details of Landscape Works

3c) Schedules of Plants noting species, quantity, density and positions

Zone 3: 30.35m²



Euonymus fortunei 'dart's blanket'

30% of area, total plants = 546 in groups of 2-3
randomly planted



Hedera helix 'Green Wonder'

20% of area, total plants = 364 in groups of 2-3



Pachysandra terminalis 'Green Carpet'

25% of area, total plants = 455 in groups of 2-3
randomly planted



Polypodium vulgare

25% of area, total plants = 455 in groups of 1-2
randomly dotted throughout

Condition 3—Details of Landscape Works

3d) Details of Implementation programme

The Following implementation plan is proposed

Week Commencing 21/12/2015—Planted panels are planted in the Biotecture nursery (minimum eight week growing period is required)

Week commencing 07/03/2016—Commencement of the living wall installation

Week commencing 14/03/2016—Completion of the carrier system

Week commencing—21/03/2016 Commence fixing of the planted tiles with completion 04/04/2016

Note that all necessary permits and licences will be obtained from the local authority in advance of the works commencing.

Please note that the above dates quoted are for guidance only in terms of the installation time for the living wall. It is proposed that the living wall is installed in Spring 2016 and the actual date for installation will be dependent on the planning conditions discharge and other approvals being obtained