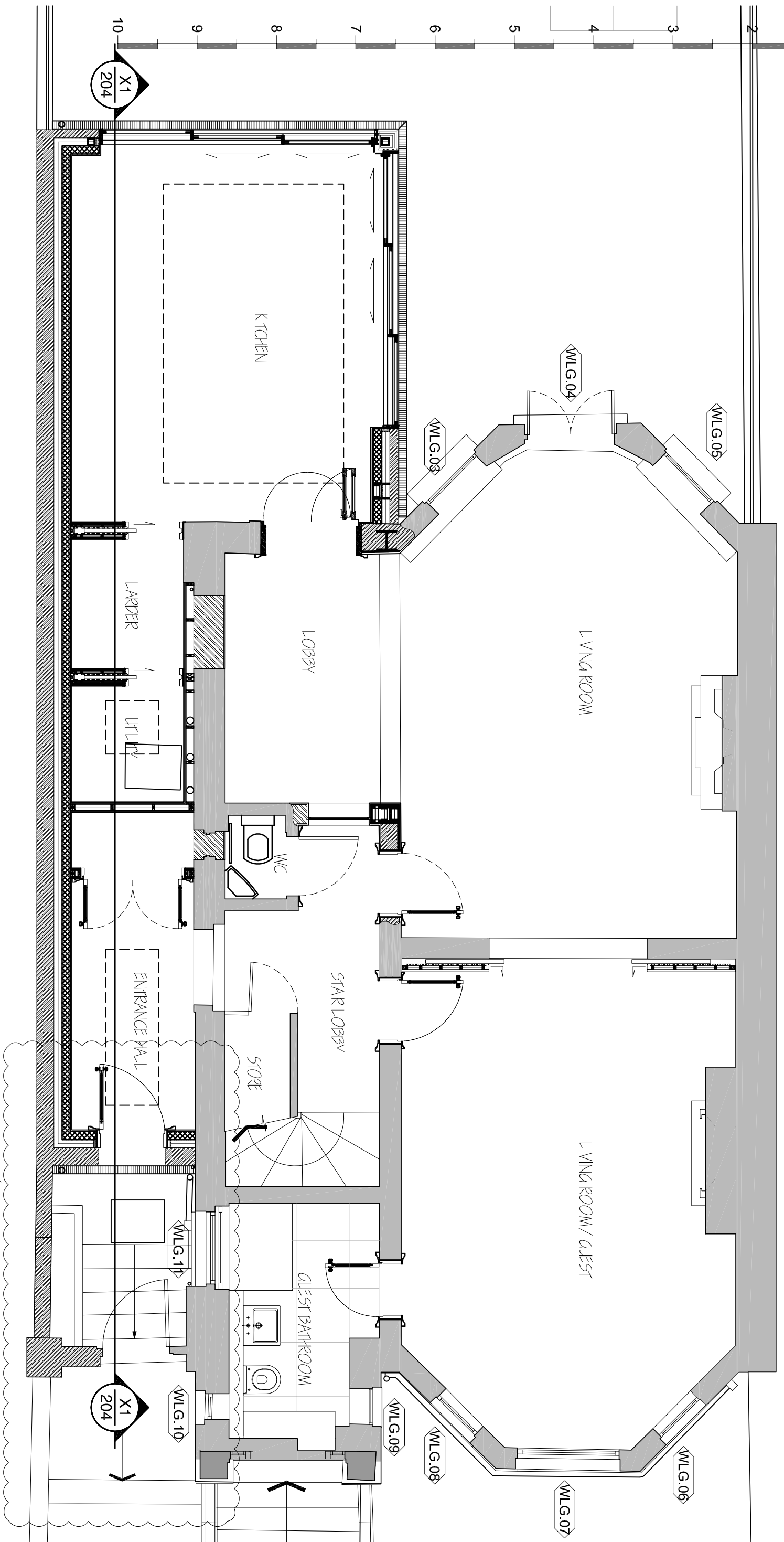


**NOTE:**  
 EXISTING TIMBER WINDOWS WLG.03-WLG.04-WLG.05-WLG.06-WLG.07-  
 WLG.08-WLG.09-WLG.10-WLG.11 TO BE REFURBISHED, PAINTED WHITE AND FITTED WITH  
 CONSERVATION DOUBLE GLAZING TIMBER SLIM LINE



LOWER GROUND FLOOR  
 ENTRANCE TO BE RETAINED  
 AS EXISTING

201 LOWER GROUND FLOOR AS PROPOSED

General Notes:  
 All dimensions and heights to be checked on site prior to construction. Any discrepancies between site, drawing or specification to be reported to the architect immediately.  
 Do not scale drawings.  
 The setting out is the contractor's responsibility

Project: REDEVELOPMENT AND REFURBISHMENT OF MAISONETTE	Scale@A1: 1:25	Date: 15.12.15	Rev. Date	By	Notes	Rev.	Dwg. Title
Location: 111A KING HENRY'S ST, LONDON NW3 3QX	Status: PLANNING	Job No. 025	Dwg. No. 201	Rev. p1	Dwg. Title LOWER GND FLOOR AS PROPOSED		
	Drawn: DS	Checked: MB					