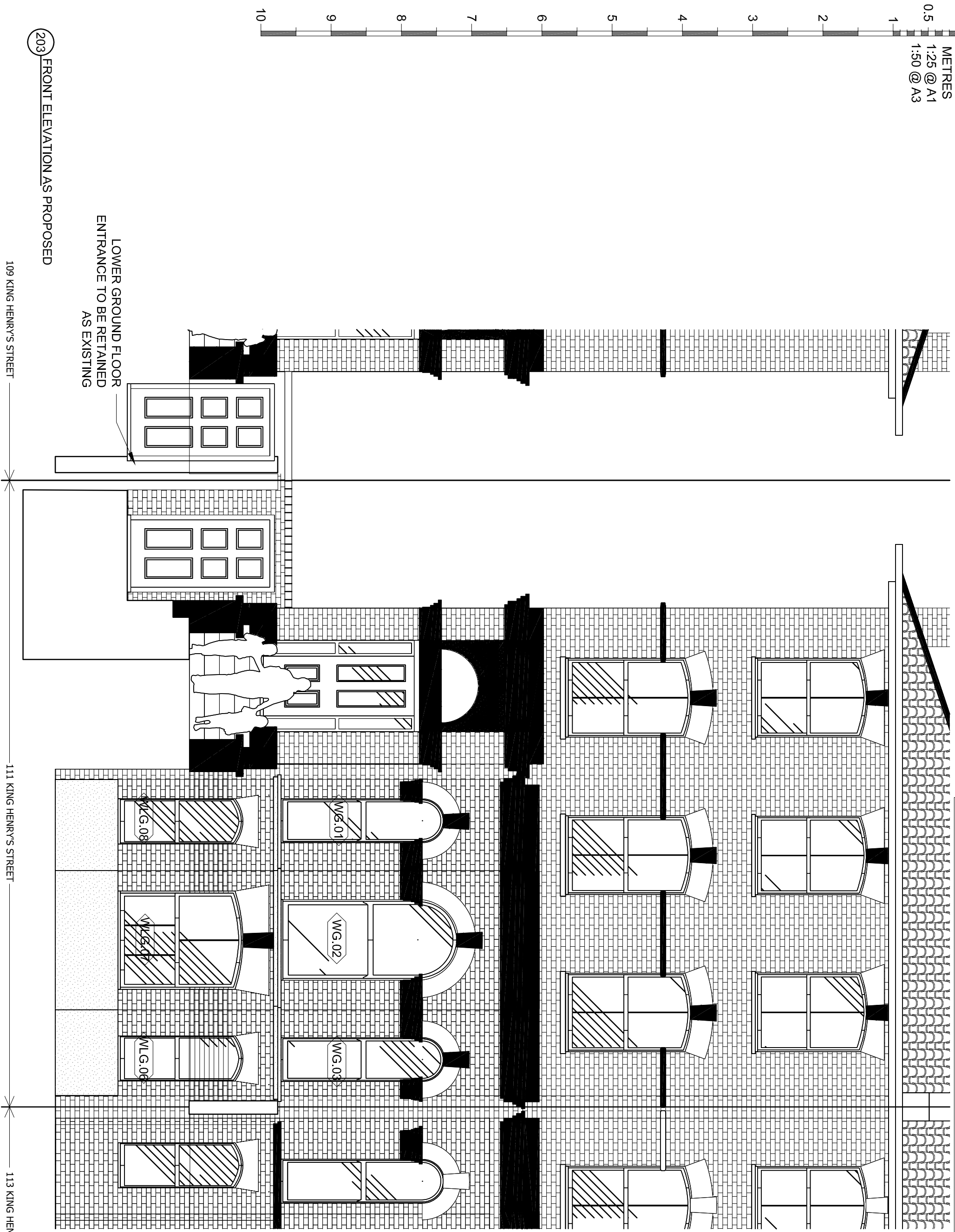


NOTE:
 EXISTING TIMBER WINDOWS WG.01-WG.02-WG.03-WLG.06-WLG.07-WLG.08 TO BE REFURBISHED,
 PAINTED WHITE AND FITTED WITH CONSERVATION DOUBLE GLAZING TIMBER SLIM LINE



LOWER GROUND FLOOR
 ENTRANCE TO BE RETAINED
 AS EXISTING

203 FRONT ELEVATION AS PROPOSED

109 KING HENRY'S STREET

111 KING HENRY'S STREET

113 KING HENRY'S STREET