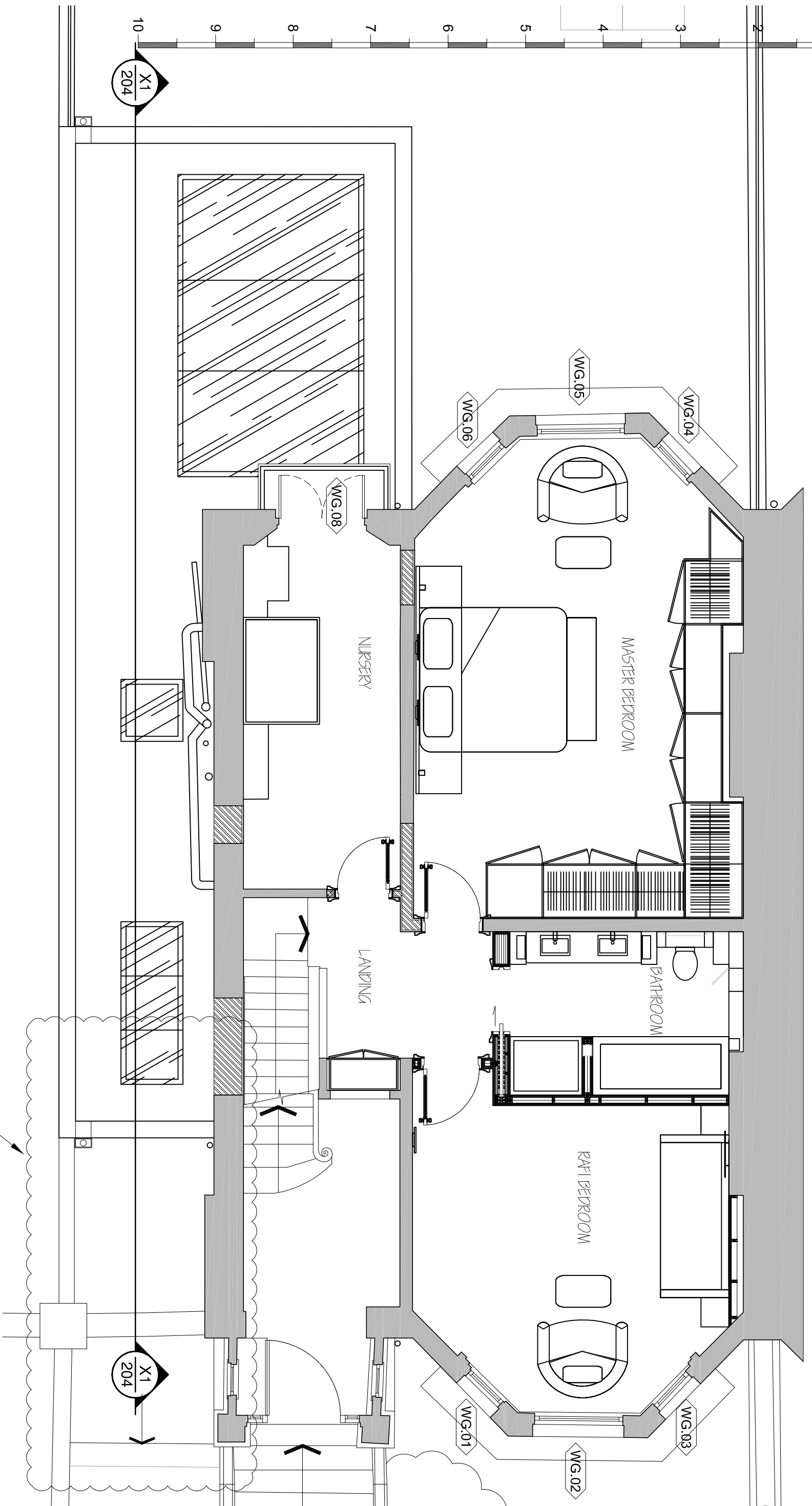


NOTE:
 EXISTING TIMBER WINDOWS WG.01-WG.02-WG.03- WG.04-WG.05-WG.06-WG.08 TO BE
 REFURBISHED, PAINTED WHITE AND FITTED WITH CONSERVATION DOUBLE GLAZING
 TIMBER SLIM LINE



LOWER GROUND FLOOR
 ENTRANCE TO BE RETAINED
 AS EXISTING

202 UPPER GROUND FLOOR AS PROPOSED



Project: REDEVELOPMENT AND REFURBISHMENT OF MAISONETTE
 Location: 111A KING HENRY'S ST, LONDON NW3 3QX

Scale@A1: 1:25 Date: 15.12.15

Status: PLANNING

Drawn: DS Checked: MB

Rev.	Date	By	Notes
025			
202			
p1			

Dwg. Title
 UPPER GND FLOOR
 AS PROPOSED

General Notes:
 All dimensions and heights to be checked on site prior construction. Any discrepancies between site, drawing or specification to be reported to the architect immediately.
 Do not scale drawings.
 The setting out is the contractor's responsibility