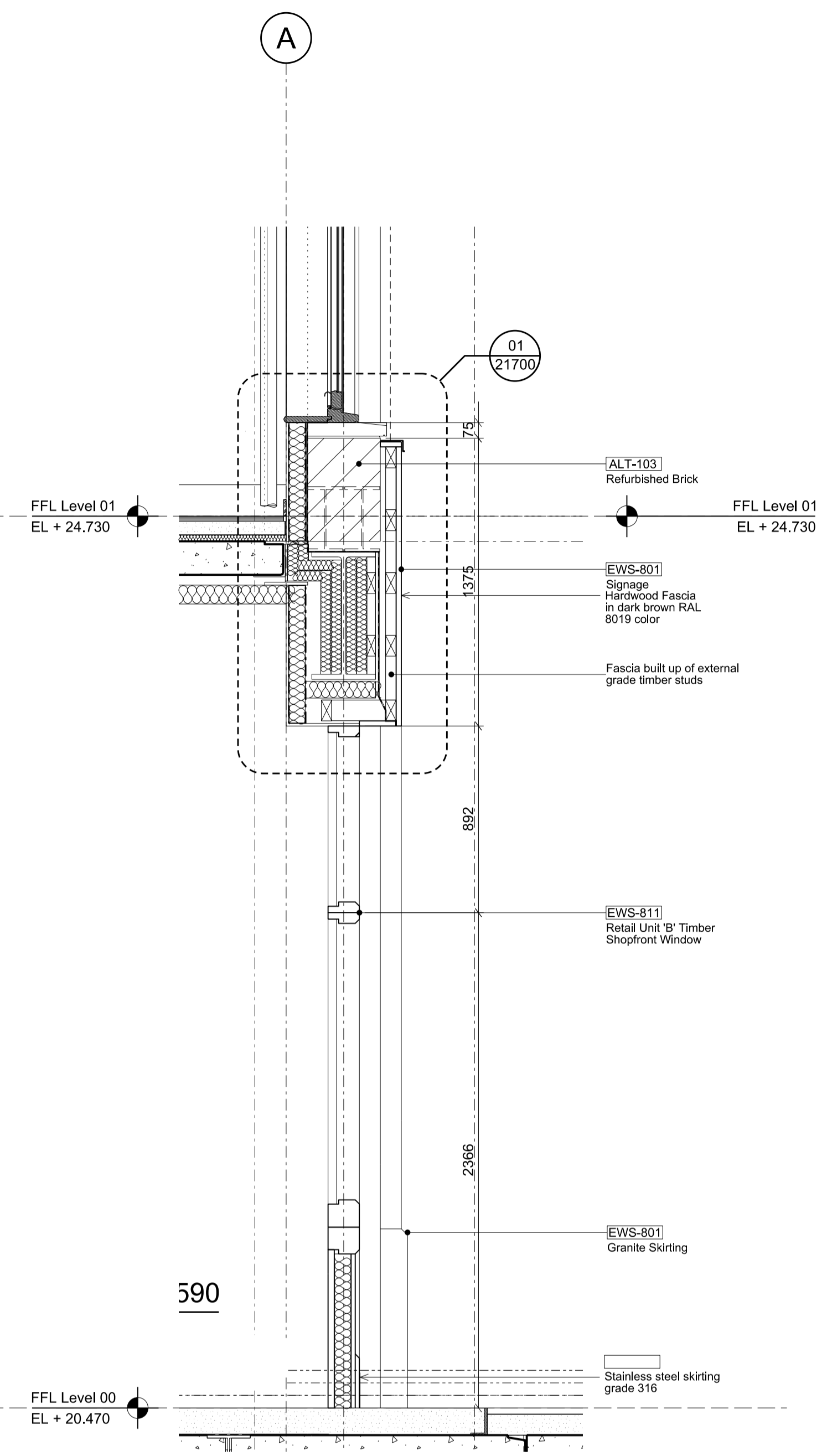
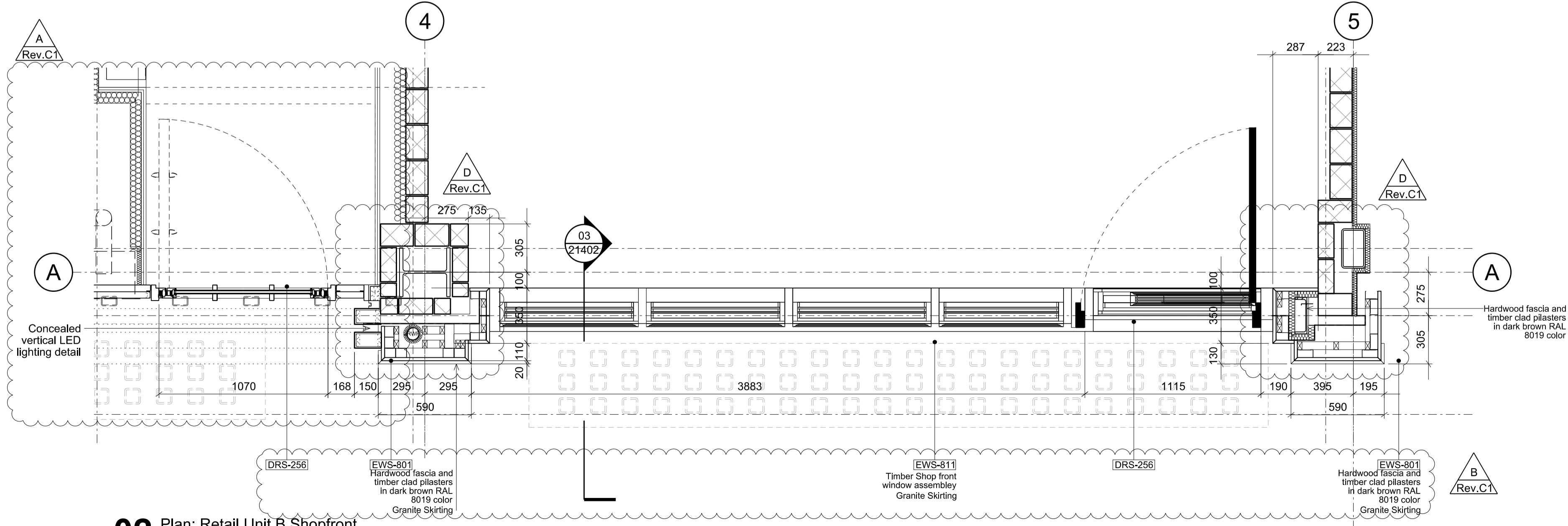




01 Elevation: Retail Unit B Shopfront
1:20



03 Section: Retail Unit B Shopfront
1:20



02 Plan: Retail Unit B Shopfront
1:20

NOTE: The design of the pilasters reflects the structural beams and columns on GL A as revised to suite the revised basement scheme (i.e. not extending under the pavement). Awaiting survey information to establish final position of walls and finalizing the steelwork design. Awaiting final structural design on GL A structure from structural engineer.

Disclaimer
Do not scale from this drawing. Check all dimensions on site before fabrication or setting out. This document is copyright and may not be reproduced without permission of the owner.

Notes
Please refer to RPP A_21_100-105 & A_21_300-301 for external cladding scope

Rev.C1

Drawings and details are illustrative of the design intent. Some of the details herein will require specialist subcontractor input with final arrangement of details to be agreed and finalized with specialist sub-contractor and main contractor.

Key

Revision Commentary

| | |
|---|--|
| A | New design for the main entrance doors. Amended in line with clients brief. |
| B | Specification tags updated and notes added for clarification. Tags will also be amended / added to specification |
| C | Notes added for clarification |
| D | Pilaster joinery details indicated |

| | | | | |
|-----|---------------------|----------|----|----|
| C01 | For Construction | 08.08.14 | AK | AK |
| T04 | Preliminary Issue | 18.07.14 | AK | AK |
| T03 | Issued for Contract | 06.12.13 | AK | AK |
| T02 | Tender Issue | 06.09.13 | AK | AK |
| T01 | Tender Issue | 30.06.13 | AK | AK |

Rev Notes

| Rev | Notes | Date | Dwn | Iss |
|-----|-------|------|-----|-----|
| | | | | |

Consultants

Client Representative: APM Services Ltd.
BBS Building Control
Fire Consultant: BB7 Fire Consulting
Quantity Surveyors: CDM: Settridge & Milson
Party Wall Surveyor: Everest Building Surveying
Noise & Air Quality Assessment: Hawkins Environmental
Daylight/Sunlight Analysis: Gordon Ingram Associates
Structure: Kirksaunders
Planning Consultant: Montagu Evans
Interior Designer: SGS Design
M&E: Truop Bywaters + Andres



Robin Partington & Partners
Castlewood
35 New Oxford Street
London
WC1A 1DG
+44 20 7419 3500
mail@rpplondon.com
www.rpplondon.com

Client
The Lincolns Management Ltd.

Project
39-45 Gray's Inn Road

Drawing Title
**External Envelope
East Elevation
Retail Unit B**

| | | |
|-----------|----------|-----------|
| Scale | Drawn By | Issued By |
| 1:20 @ A1 | AK | AK |

For Construction

| | | |
|-------------|-------------|----------|
| Project No. | Drawing No. | Revision |
| 13006 | A_21_402 | C01 |

Date Last Saved: Sunday, August 10, 2014