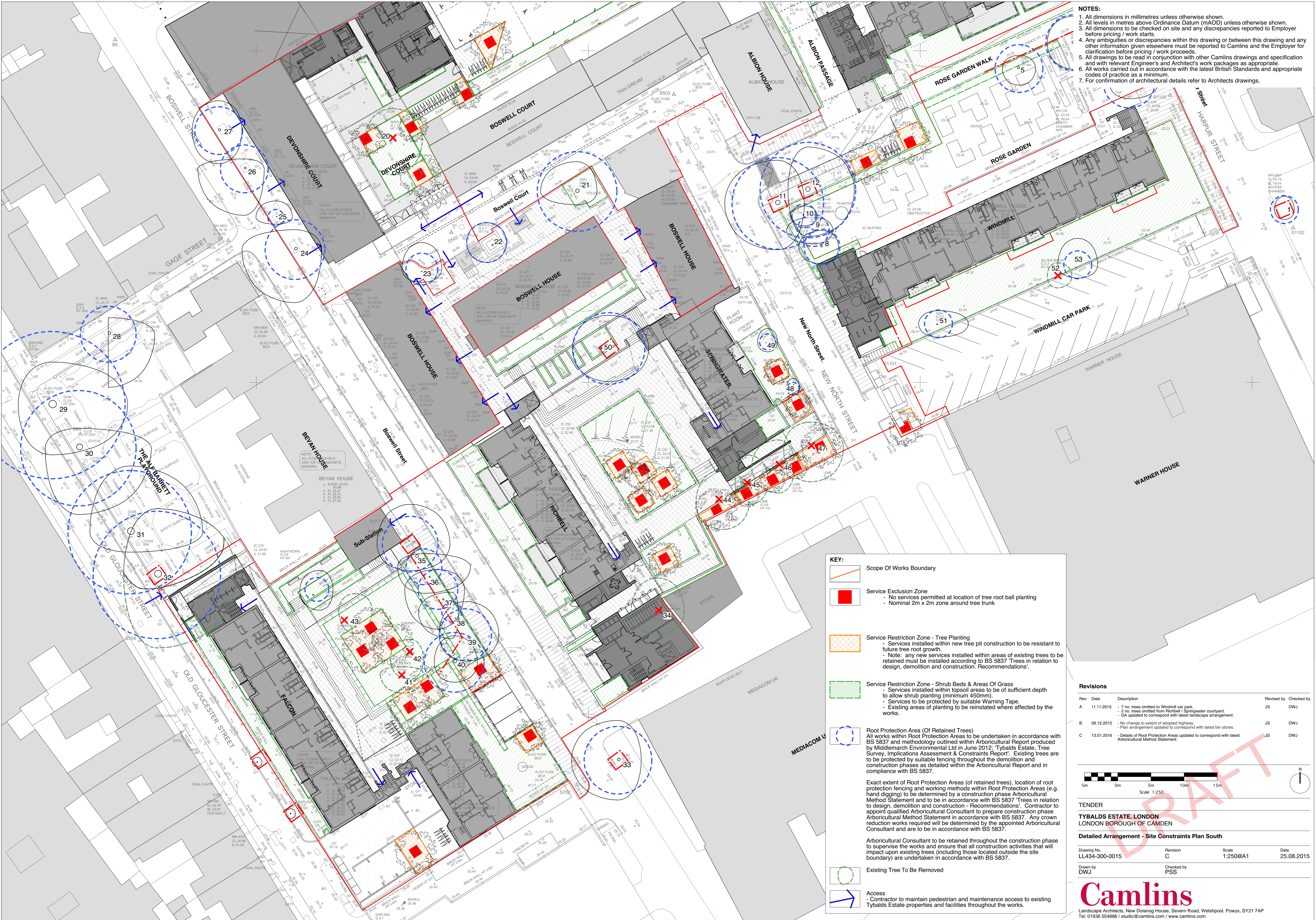


Camline Ref: LONDON GENERAL/LL434-TYBALDS ESTATE/Camline Work/Drawings/LL434-300-TENDER [Ref: LL434REF-300-PUBLIC REALM BASES; LL434REF-300-OS BASE; LL434REF-300-TOPO SURVEY]



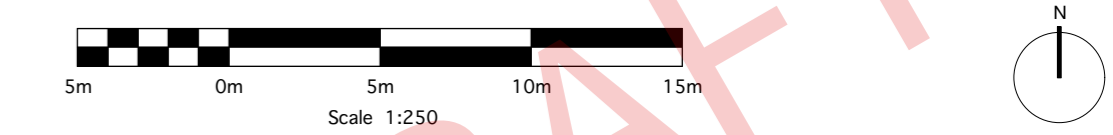
- NOTES:**
1. All dimensions in millimetres unless otherwise shown.
 2. All levels in metres above Ordnance Datum (mAOD) unless otherwise shown.
 3. All dimensions to be checked on site and any discrepancies reported to Employer before pricing / work starts.
 4. Any ambiguities or discrepancies within this drawing or between this drawing and any other information given elsewhere must be reported to Camlins and the Employer for clarification before pricing / work proceeds.
 5. All drawings to be read in conjunction with other Camlins drawings and specification and with relevant Engineer's and Architect's work packages as appropriate.
 6. All works carried out in accordance with the latest British Standards and appropriate codes of practice as a minimum.
 7. For confirmation of architectural details refer to Architects drawings.

KEY:

- Scope Of Works Boundary
- Service Exclusion Zone
 - No services permitted at location of tree root ball planting
 - Nominal 2m x 2m zone around tree trunk
- Service Restriction Zone - Tree Planting
 - Services installed within new tree pit construction to be resistant to future tree root growth.
 - Note: any new services installed within areas of existing trees to be retained must be installed according to BS 5837 'Trees in relation to design, demolition and construction. Recommendations'.
- Service Restriction Zone - Shrub Beds & Areas Of Grass
 - Services installed within topsoil areas to be of sufficient depth to allow shrub planting (minimum 450mm).
 - Services to be protected by suitable Warning Tape.
 - Existing areas of planting to be reinstated where affected by the works.
- Root Protection Area (Of Retained Trees)
 - All works within Root Protection Areas to be undertaken in accordance with BS 5837 and methodology outlined within Arboricultural Report produced by Middlemarch Environmental Ltd in June 2012: Tybalds Estate, Tree Survey, Implications Assessment & Constraints Report'. Existing trees are to be protected by suitable fencing throughout the demolition and construction phases as detailed within the Arboricultural Report and in compliance with BS 5837.
 - Exact extent of Root Protection Areas (of retained trees), location of root protection fencing and working methods within Root Protection Areas (e.g. hand digging) to be determined by a construction phase Arboricultural Method Statement and to be in accordance with BS 5837 'Trees in relation to design, demolition and construction - Recommendations'. Contractor to appoint qualified Arboricultural Consultant to prepare construction phase Arboricultural Method Statement in accordance with BS 5837. Any crown reduction works required will be determined by the appointed Arboricultural Consultant and are to be in accordance with BS 5837.
- Existing Tree To Be Removed
- Access
 - Contractor to maintain pedestrian and maintenance access to existing Tybalds Estate properties and facilities throughout the works.

Revisions

Rev	Date	Description	Revised by	Checked by
A	11.11.2015	- 7 no. trees omitted to Windmill car park. - 2 no. trees omitted from Pichell / Springwater courtyard. - GA updated to correspond with latest landscape arrangement.	JS	DWJ
B	09.12.2015	- No change to extent of adopted highway. - Plan arrangement updated to correspond with latest bin stores.	JS	DWJ
C	13.01.2016	- Details of Root Protection Areas updated to correspond with latest Arboricultural Method Statement.	JS	DWJ



TENDER

TYBALDS ESTATE, LONDON
LONDON BOROUGH OF CAMDEN

Detailed Arrangement - Site Constraints Plan South

Drawing No.	Revision	Scale	Date
LL434-300-0015	C	1:250@A1	25.08.2015

Drawn by DWJ
Checked by PSS