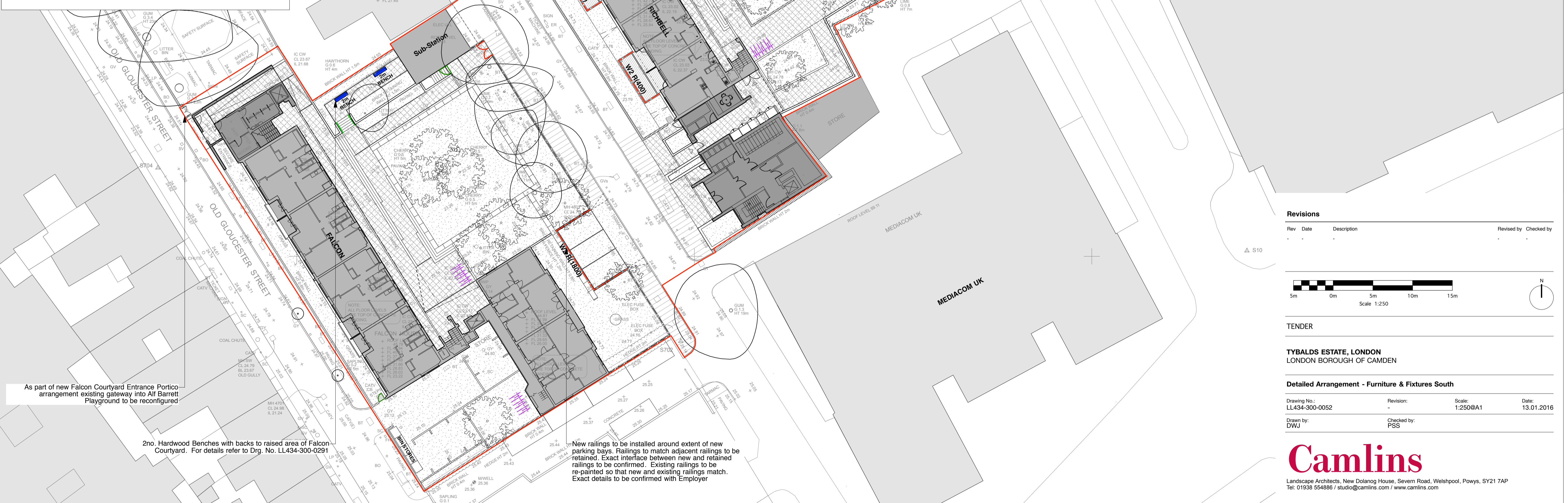


Camlins Ref: LONDON GENERAL/LL434 TYBALDS ESTATE/Camlins Work/Drawings/LL434-300-TENDER [Ref.: LL434REF-300-PUBLIC REALM BASES: LL434REF-300-OS BASE: LL434REF-300-TOPO SURVEY]

- KEY:**
- Scope Of Works Boundary
  - Existing Estate Buildings
  - Proposed Estate Buildings
- FURNITURE & FIXTURES:**
- 800mm High Hardwood Bollards. Refer To Drg. No. LL434-300-0291  
SPF 150/1250 Bollards As Supplied By Woodscape & Demountable Bollards (DB) With Stainless Steel Sockets
  - 2.5m & 2m Long Hardwood Benches  
For Details Refer To Drg. No. LL434-300-0291
  - Electric Charging Points  
Exact Details To Be Confirmed
  - Cycle Stands  
For Details Refer To Drg. No. LL434-300-0291
  - Lighting Column Location  
Refer To M&E Engineers Details for confirmation
- RAILINGS:**
- R(1000)** Powder Coated Steel Railings (Nominal 1000mm High)  
(Mounted Upon Brick Walls With Granite Coping or Brick On Edge Coping)
    - Chancellor's Court Entrance
    - Babington Court Entrance
    - Rose Garden Walk
    - New Blomundsbury Garden Terraces
    - Devonshire Court
 For Details Refer To Drg. No. LL434-300-0255
  - R(400)** Powder Coated Steel Railings (Nominal 400mm High)  
(Mounted Upon Brick Walls With Brick On Edge Coping)
    - Blomundsbury Underbuild Gardens
    - Windmill Underbuild Gardens
    - Richbell Underbuild Gardens
 For Details Refer To Drg. No. LL434-300-0256
  - R(675)** Powder Coated Steel Railings (675mm High)  
(Mounted Upon Brick Walls With Granite Coping)
    - Orde Hall St Play Area
 For Details Refer To Drg. No. LL434-300-0257
  - R(1800)** Powder Coated Steel Railings (1800mm High)  
(Mounted Upon Brick Walls With Brick On Edge Coping)
    - Falcon Boundary With Boswell Street (Parking Bays). Railing design to match existing railings to be retained. Exact details to be confirmed with Employer.
 For Details Refer To Drg. No. LL434-300-0258
- GATES:**
- GATE** Powder Coated Steel Gates (Public Realm Areas)  
1.2m Wide Gates to match adjacent railings. Exact details to be confirmed.  
For Details Refer To Drg. No. LL434-300-0255
  - GATE (KF)** Gates With Key Fob Actuation System (And Gated Entrance Porticos)  
Exact details of Actuation System to be confirmed with M&E Engineer.  
For details of Gated Entrance Portico's refer to Architects drawings.
- HANDRAIL:**
- Powder Coated Steel Handrails (Publicly Accessible Areas)  
For Details Refer To Drg. No. LL434-300-0258

- NOTES:**
- All dimensions in millimetres unless otherwise shown.
  - All levels in metres above Ordinance Datum (mAOD) unless otherwise shown.
  - All dimensions to be checked on site and any discrepancies reported to Employer before pricing / work starts.
  - Any ambiguities or discrepancies within this drawing or between this drawing and any other information given elsewhere must be reported to Camlins and the Employer for clarification before pricing / work proceeds.
  - All drawings to be read in conjunction with other Camlins drawings and specification and with relevant Engineer's and Architect's work packages as appropriate.
  - All works carried out in accordance with the latest British Standards and appropriate codes of practice as a minimum.
  - For confirmation of architectural details refer to Architects drawings.



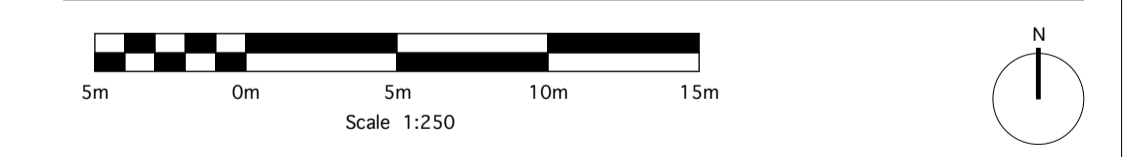
As part of new Falcon Courtyard Entrance Portico arrangement existing gateway into Alf Barrett Playground to be reconfigured

2no. Hardwood Benches with backs to raised area of Falcon Courtyard. For details refer to Drg. No. LL434-300-0291

New railings to be installed around extent of new parking bays. Railings to match adjacent railings to be retained. Exact interface between new and retained railings to be confirmed. Existing railings to be re-painted so that new and existing railings match. Exact details to be confirmed with Employer

**Revisions**

Rev	Date	Description	Revised by	Checked by



TENDER

TYBALDS ESTATE, LONDON  
LONDON BOROUGH OF CAMDEN

**Detailed Arrangement - Furniture & Fixtures South**

Drawing No.: LL434-300-0052	Revision: 	Scale: 1:250@A1	Date: 13.01.2016
Drawn by: DWJ	Checked by: PSS		

**Camlins**  
Landscape Architects, New Dolan House, Severn Road, Welshpool, Powys, SY21 7AP  
Tel: 01938 554886 / studio@camlins.com / www.camlins.com