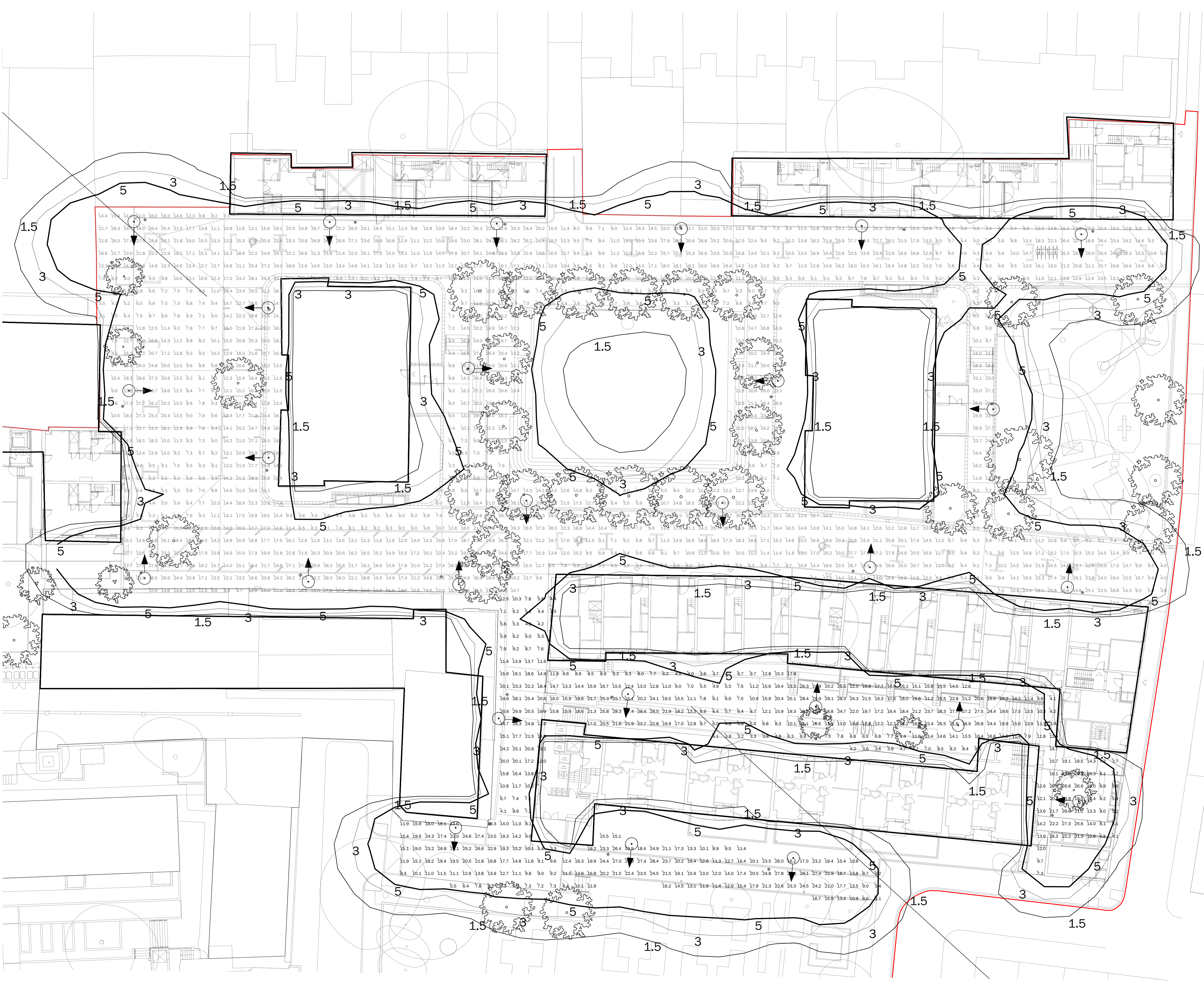


Notes:-
 This drawing is the property of Designbrook Ltd and as such may not be copied or communicated to a third party without written authorisation.
 This drawing conveys design intent and is provided to assist the contractor in the development of their working drawings.
THE CONTRACTOR SHALL NOT INSTALL TO THIS DRAWING.
 Please do not scale from this drawing.

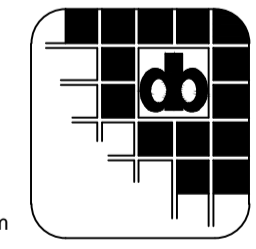
CDM Regulations			
Hazards	Date Added	Date Mitigated	Risk Assessment Date



T1 13.01.16 External Lighting Layout
 (05.10.15) Preliminary External Lighting Layout

Revision	Date	Description

Offices 5 & 6, Ground Floor,
 Unit 12 Indigo House,
 Mulberry Business Park,
 Wokingham,
 Berkshire, RG41 2GY
 TEL: 0118 9 773 011
 FAX: 0118 9 773 044
 General Enquiries e-mail: admin@designbrook.com



Client:
 Durkan
 4 Elstree Gate,
 Elstree Way,
 Borehamwood, Herts
 WD8 1LD
 T 020 8619 9736
 F 020 8619 9800



Project Description:
 Tybalds Estate Regeneration

Drawing Title:
 External Lighting Layout - Adoptable Roads

Status:
 TENDER ISSUE

Drawn by: SL	Checked by: -	Approved by: -
Job Number: 5711	Original Sheet Size: A1	Scale: 1:200
Sheet 2 Of 2		
Drawing number: DBR-EC-SITE-63-100-02		Rev: T1