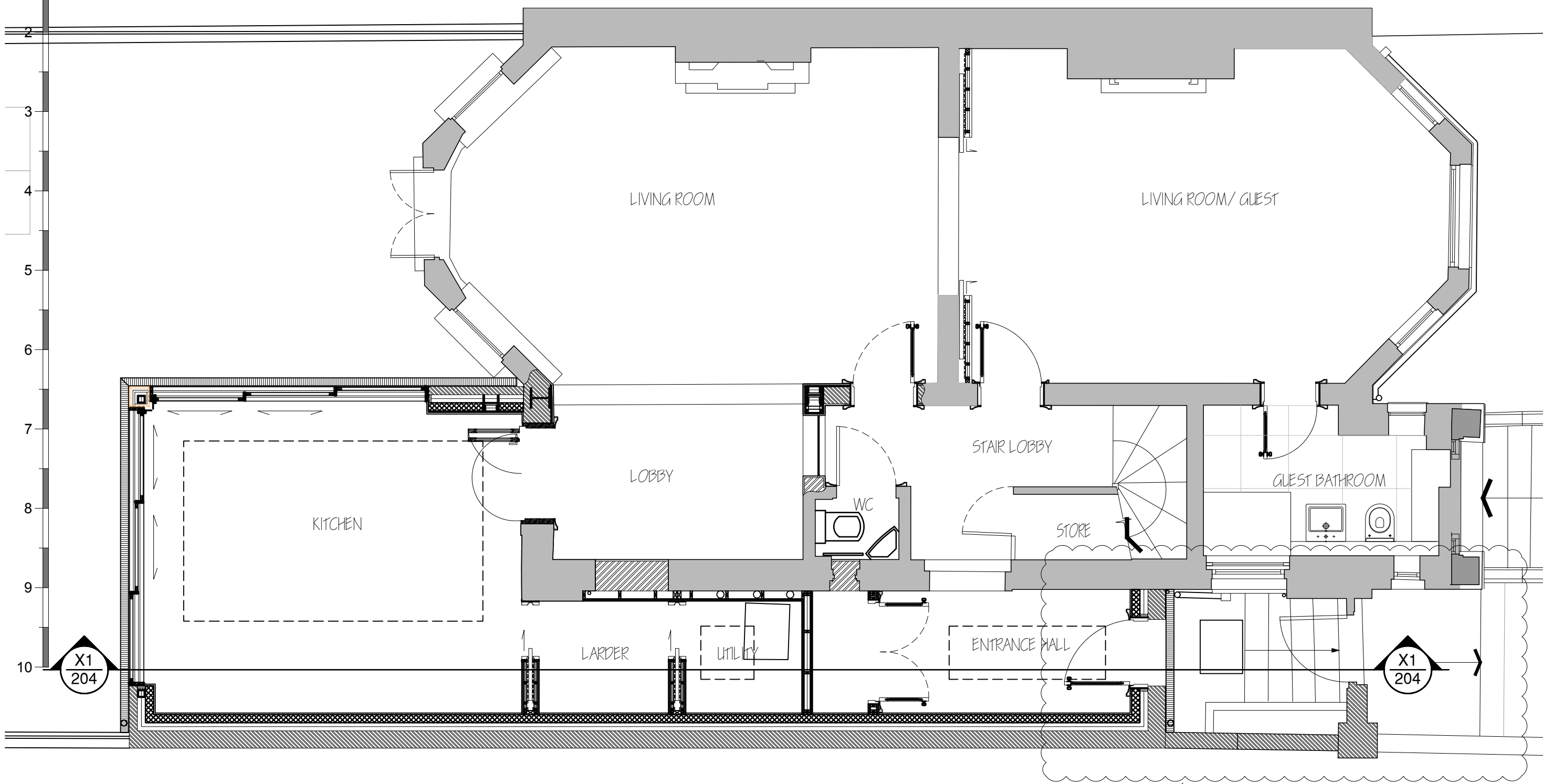


METRES
1:25 @ A1
1:50 @ A3

Indicative North

NOTE:
ALL WINDOWS TO BE FITTED WITH CONSERVATION DOUBLE GLAZING



LOWER GROUND FLOOR
ENTRANCE TO BE RETAINED
AS EXISTING

201 LOWER GROUND FLOOR AS PROPOSED

General Notes:
All dimensions and heights to be checked on site prior to construction. Any discrepancies between site, drawing or specification to be reported to the architect immediately.
Do not scale drawings.
The setting out is the contractor's responsibility

Project: REDEVELOPMENT AND REFURBISHMENT OF MAISONNETTE
Location: 1.11A KING HENRY'S ST, LONDON NW3 3QX
Scale@A1: 1:25 Date: 15.12.15
Status: PLANNING
Job No. 025
Checked: MB
Drawn: DS
Rev. No. 201
Dwg. No. 201
Dwg. Title: LOWER GND FLOOR AS PROPOSED