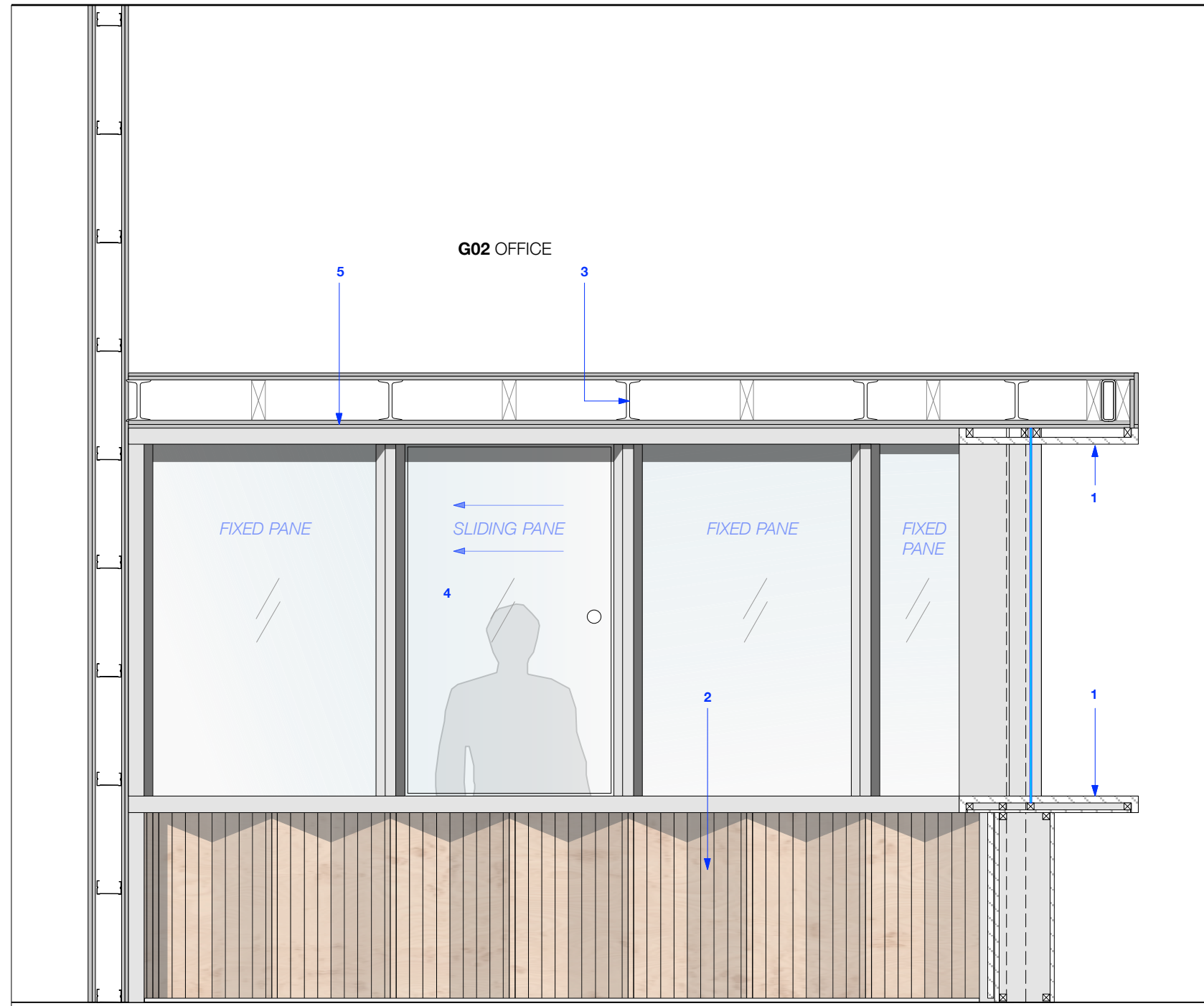


**RECEPTION DESK**  
ELEVATION AA 1.20

- 1 Timber desk.
- 2 T+G boards with concealed structural supports
- 3 Structural supports.
- 4 Fixed glass panel/ sliding door system or similar approved. Top hung. Push button cylinder lock. Tracks integrated into frame.
- 5 Two layers of plasterboard to soffit and to top
- 6 Linear lighting
- 7 Both arched windows above reception area to be replaced to match existing



**RECEPTION DESK**  
ELEVATION BB 1.20

- 1 Timber desk
- 2 T+G boards with concealed structural supports
- 3 Structural supports
- 4 Sliding glass panel. Top hung. Push button cylinder lock. Tracks integrated into frame.
- 5 Two layers of plasterboard to soffit and to 'lid'

All dimensions to be checked on site

notes

- 13.01.16 planning issue  
rev

Reception Desk  
title

1403A\_P\_1602  
drawing number

1/20 A/3

0 0.25 0.5m