

Document name: **328 CITE/HA TR A**

Issue date: 08/01/16

Rev A 11/01/16

1. Site situation page 02

2. Tree features page 03

3. Root barrier page 04

1. Site situation

Currently there is Japanese Knotweed at the site but it will be removed from there, as it has been notified on the following approved documents (Application Ref: 2014/2833/P):

- *Tree Report* by ACD Arboriculture Ref PRI18839tr dated 08/01/2014
- *Arboricultural Impact Assessment* by ACD Arboriculture Ref PRI18839aia dated 10/04/2014

2. Tree features

Following the approved documents below (Application Ref: 2014/2833/P):

- *Design and Access Statement* by Dmkf
- *Arboricultural Impact Assessment* by ACD Arboriculture Ref PRI18839aia dated 10/04/2014

There is scope for the planting of three trees within the development layout:

- **Pyrus Communis 'Beech Hill'** (2 units): in the Northern section of the site – see drawing below, highlighted in violet.

Girth = 12-14 cm

Height = 3 m approx (average mature height 10-15 m)

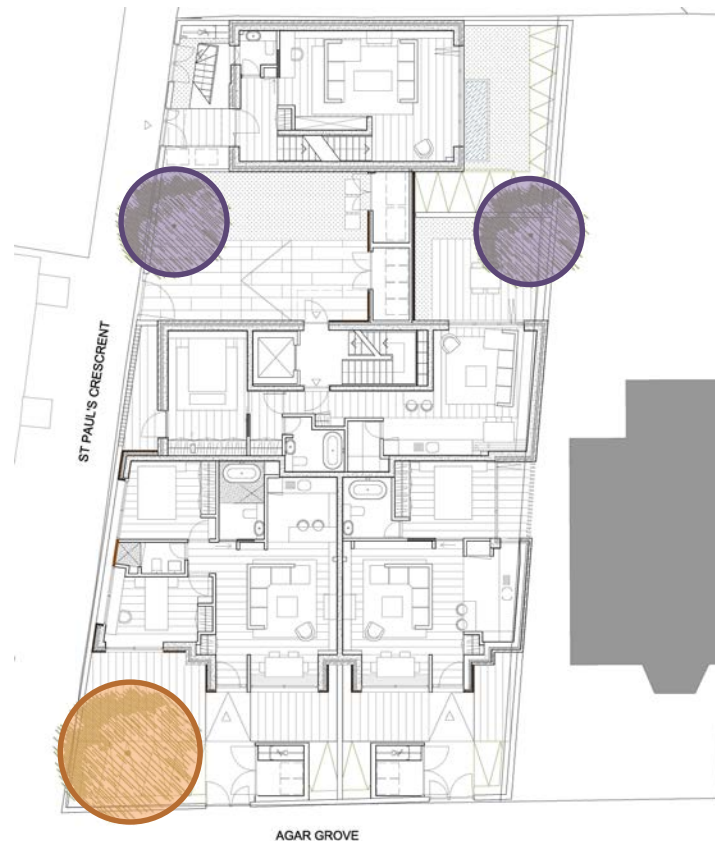
Mature spread = 3-5 m approx

- **Parrotia persica 'Vanessa'** (1 unit): in the South West corner of the site – see drawing below, highlighted in orange.

Girth = 14-16 cm

Height = 4 m approx (average mature height 10-15 m approx)

Mature spread = 4-7 m approx



3. Root barrier – further confirmation from the Structural Engineer needed

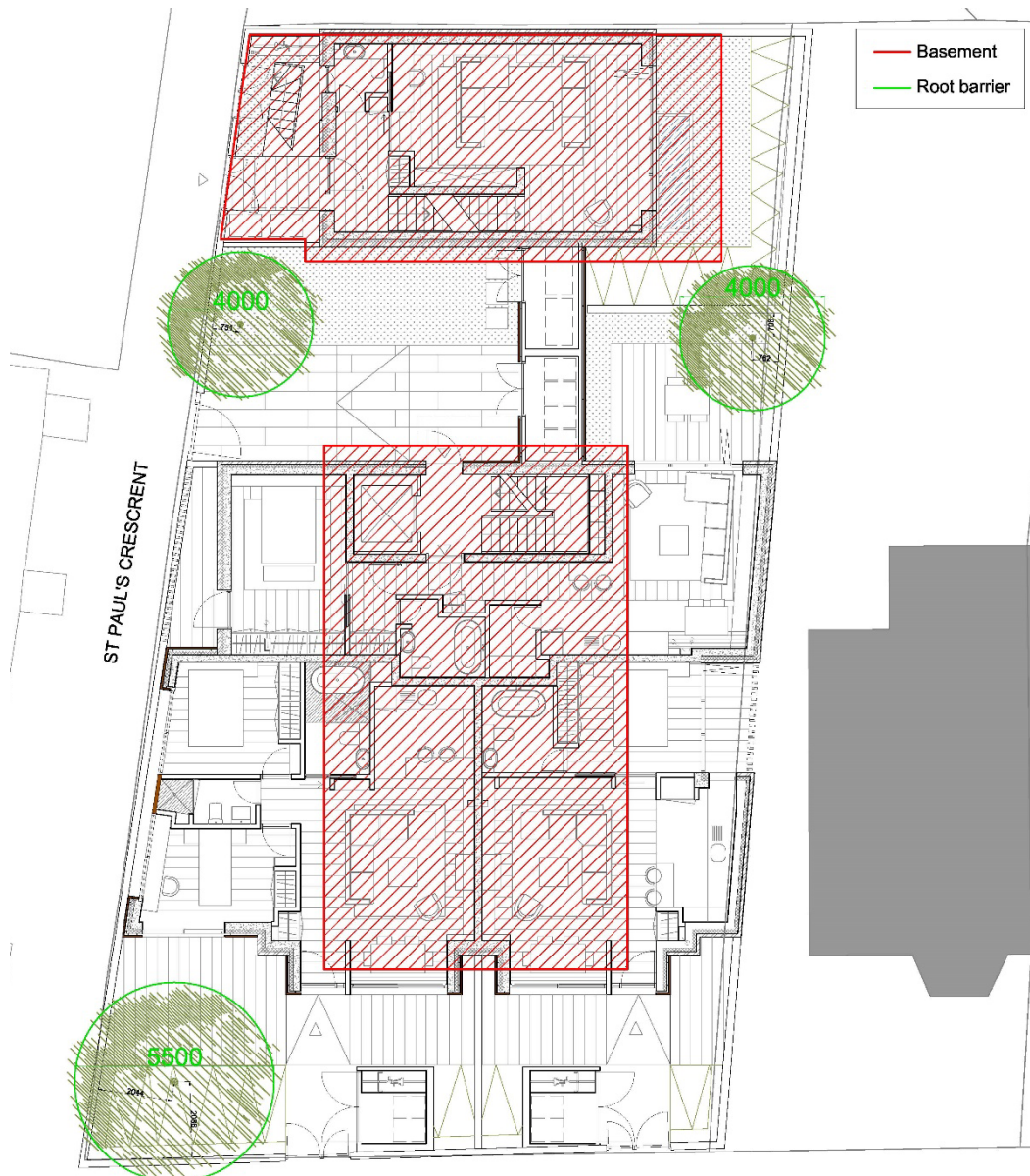
To protect the structure of the building from the tree roots, we will install a continuous root barrier that is the same length as the average diameter of the tree at maturity (ideal situation):

- **Pyrus Communis 'Beech Hill'** (2 units): in the Northern section of the site.

Diameter of the root barrier = 4 m

- **Parrotia persica 'Vanessa'** (1 unit): in the South West corner of the site.

Diameter of the root barrier = 5.5 m

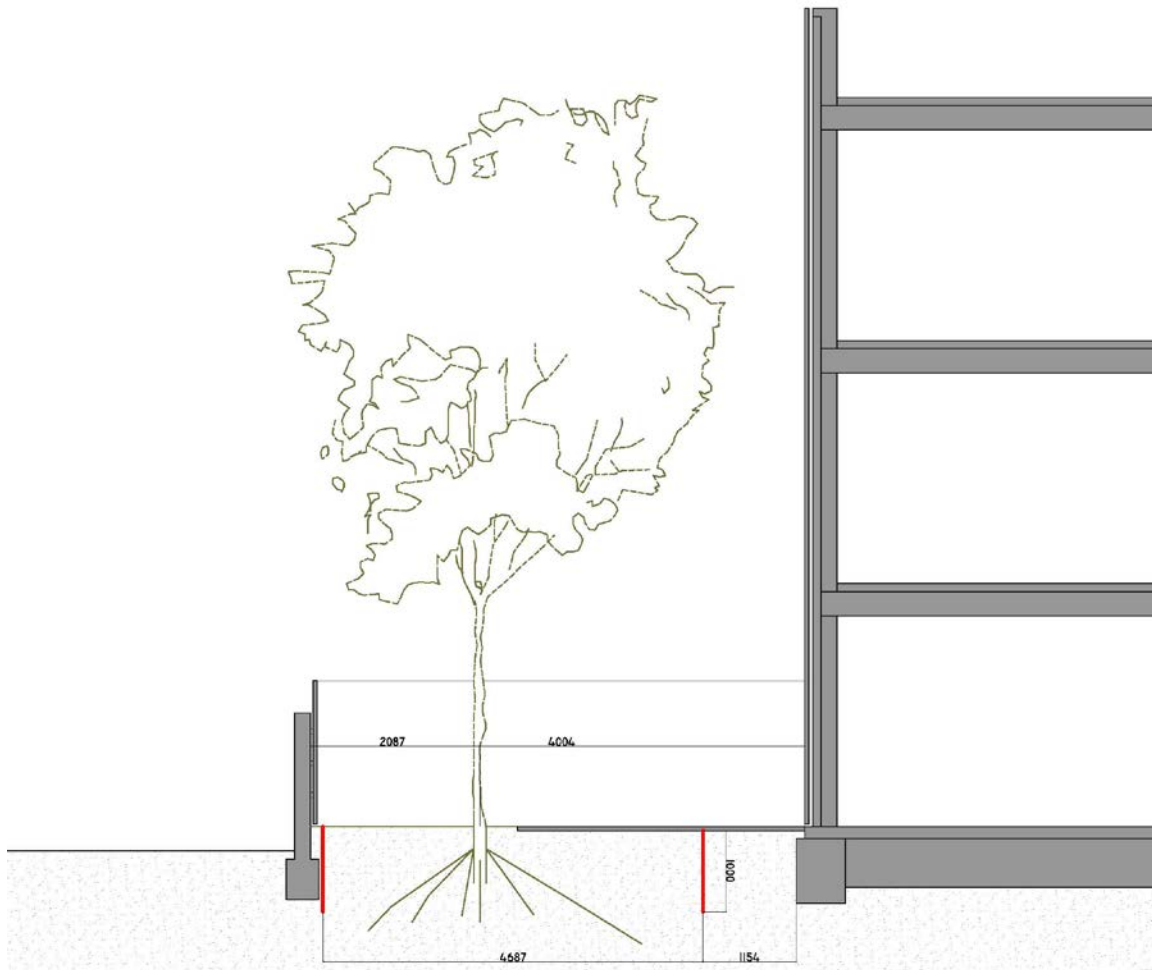


To reduce the presence of large damaging roots it is advisable to reach a depth of at least 2 feet, we will reach a depth of 1 m – see sections below with the root barriers highlighted in red.

As we are removing Japanese Knotweed from the site, we will only use vertical root barriers – no horizontal ones.



Section T1



Section T2