

External sink and water point

Fixed window. Aluminium (anthracite anodised or pcc) /timber composite window frames. Double glazed. IdealCombi or similar.

Location of new rainwater pipe

Sash. Aluminium (anthracite anodised or pcc) /timber composite window frames. Double glazed. IdealCombi or similar.

Gutter along low edge of roof

Ventilation at high level through wall.

Poured concrete floor with underfloor heating and concrete hatch over existing manhole (location indicative)

Opening rooflight (1000x1000mm kerb span). Flushglaze GlazingVision or similar.

150mm step into kitchen

New timber solid door. Painted anthracite.

New fixed windows. Aluminium (anthracite anodised or pcc) /timber composite window frames. Double glazed. IdealCombi or similar.

Ground gradually sloping down to project 00 from 150 mm FFL of utility room.

Existing RWO.

Drainage gully to existing RWO with gully grating.

Grey sandstone paving

Brick cavity wall. To match existing brick of house.

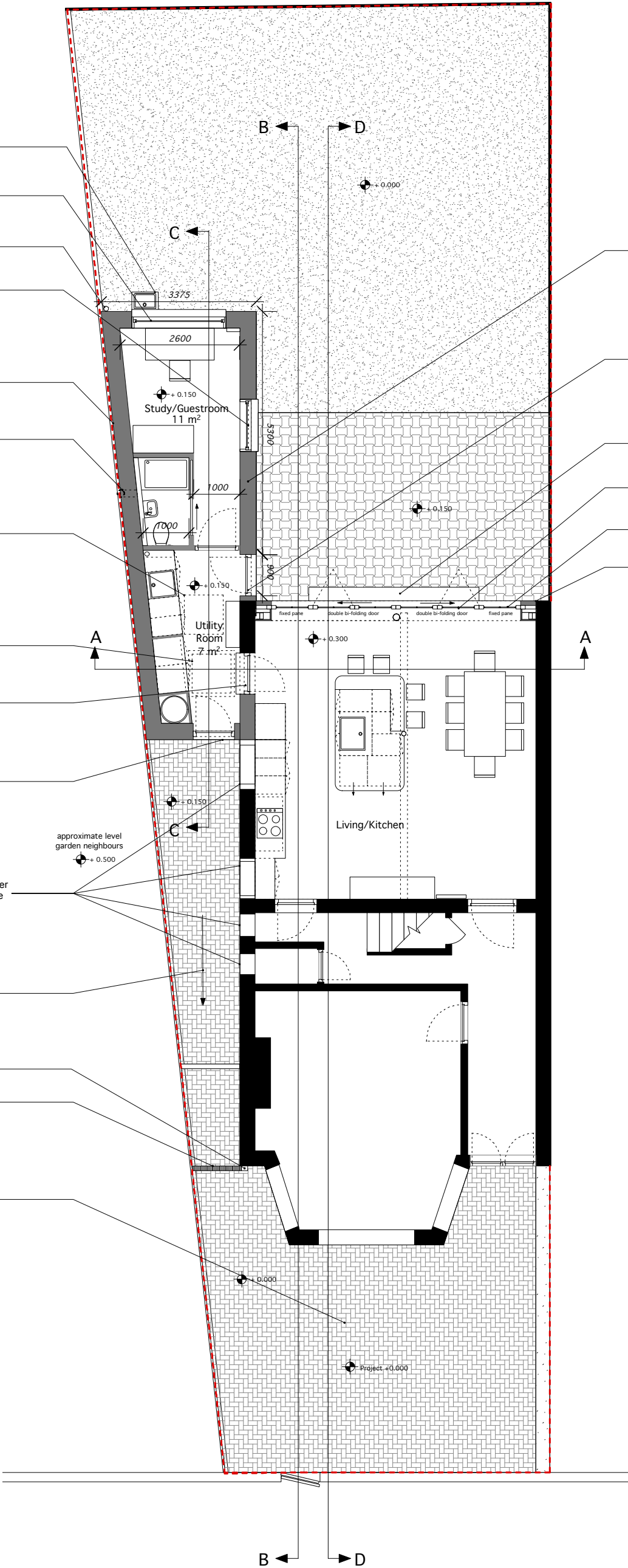
New timber door with double glazed panel. Painted anthracite.

Step - English limestone

Double bifolding door. White (anodised or pcc) aluminium frame and anthracite grid.

Fixed glass pane. White (anodised or pcc) aluminium frame and anthracite grid.

Reuse brick from house for brick cladding of structure around bi-folding windows.



Notes



General notes:

1. Do not scale drawings. 2. All dimensions are in millimeters unless noted otherwise. 3 All dimensions shall be verified on site before proceeding with the work. 4. Drawings are not for construction.

Existing walls  
New/replaced walls

Title  
Proposed\_Groundfloor Plan

Client  
Dorien Molthof & Lodewijk Henry

Scale@A3  
1:100

Datum  
30/12/2015

Drawing no.  
138FR\_P\_100

Location  
138 Fordwych Road,  
London, NW2

Status  
P  
Planning

Revision  
-