

MATERIAL KEY - (MATERIALS TBC)  
BRICKWORK (TYPES TO BE AGREED)

- TYPE D: WHITE - TYPE TO BE AGREED (MEWS HOUSES)  
Allow for coloured mortar and recessed joints
- D1 - TYPE 3- FLEMISH BOND  
D2 - TYPE 3- FLEMISH BOND TEXTURED/ HIT & MISS PANELS  
Free area to meet daylight requirements

CLADDING

- E1 - PPC METAL PANEL: bronze effect metal panel with anodized finish, hidden fixings and minimal joints.
- E2 - PERFORATED METAL: bronze effect metal panel with anodized finish, hidden fixings and minimal joints - allow for non-uniform setting out of perforations - details to be agreed. (Lighting above passageway soffit)

OPENINGS

- F - RECONSTITUTED STONE: on bracket to form architrave detail
- G - CURTAIN WALLING: curtain walling with 75mm aluminum capping at base, bronze effect timber and aluminum composite framed doors to match, opaque glass spandrel panels.
- H - WINDOWS/ DOORS: bronze effect timber and aluminum composite framed units with anodized finish -colour TBC.  
Allow for full brick reveal to all windows with metal lintel and cill. Brick reveals to all window returns.
- H1 - SPANDREL PANELS: Opaque glass bronze effect aluminum framed units with anodized finish.
- H2 - DORMER WINDOW: GRP Preformed unit with metal cladding - Colour TBC.
- H3 - ORIEL WINDOW: Projected oriel window with metal cladding - Colour TBC.
- H4 - FEATURE WINDOW: Fixed glass with side openable panel window. Bronze effect aluminum frame - Colour TBC.
- H5 - BIFOLDING DOORS: Triple panel bi-folding doors with bronze effect aluminum frame & trickle vent.
- I - CANOPIES: Pre-formed metal boxed canopy in bronze metallic finish with hidden structure and integral lighting.
- J - RESIDENTIAL ENTRANCES to Blocks: Through-the-wall mailbox system (DAD or similar) with one-piece front plate with integrated door entry system - Colour TBC.
- J1 - RESIDENTIAL ENTRANCES to Mews Houses: Solid timber front door with through-the-wall mailbox system with one-piece front plate with integrated door entry system- Colour TBC.
- K - LOUVRES: Aluminium PPC louvred doors/panels with acoustic louvers behind

RAILINGS/ ROOF ETC.

- L1 - METAL RAILING BALUSTRADE: vertical flats (approx 65 x 8mm) with anodized finish. Colour TBC.
- L1B - JULIET BALCONY: vertical flats (approx 65 x 8mm) with anodized finish.Colour TBC.
- L2 - METAL RAILING BALUSTRADE: vertical flats (approx 65 x 8mm) with anodized finish extending to balcony soffit with metal plate fascia fixed to balcony edge.
- L3 - METAL RAILINGS: formed from PPC vertical flats (approx 65 x 8mm)
- O - COPING: Precast concrete or stone coping to parapet wall - allow for reinforcement back to structure.
- P - DARK ZINC/ SLATE ROOF: to Mews Houses with metal standing seam - colour tbc.
- Q - STONE PAVING: to balconies
- R - RENDERED SOFFIT
- DRAINAGE
- S - RAINWATER GOODS: Alumasc aqualine or similar box gutter and circular downpipes PPC coated. Colour TBC

EXTERNAL WORKS (to Mews Houses)

- T - GARDEN WALLS: Full brick stretcher bond external garden wall. (Front)  
Full brick stretched bond boundary wall with timber fence to top. (Back)
- U - FENCE: Steel frame fence posts with entrance gate and integrated house number plate.
- V: BIN STORE: Timber close board door with timber posts (allow slots for ventilation)

/	14.08.15	ISSUED FOR PLANNING	EA	TP
rev	date	description	drawn	audited
drawing status				

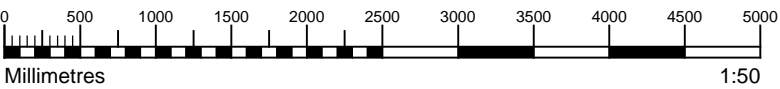
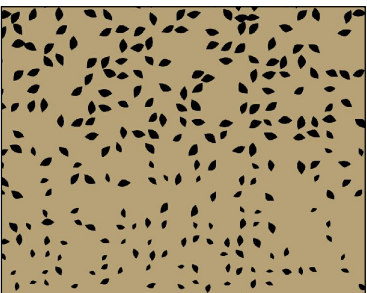
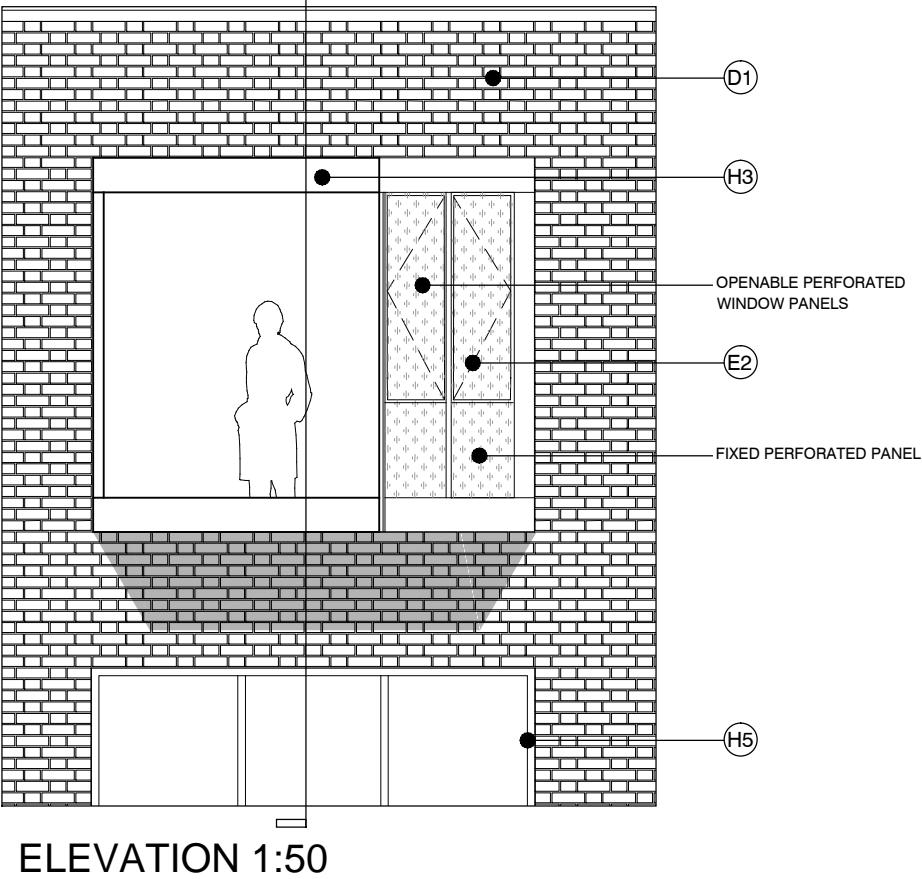
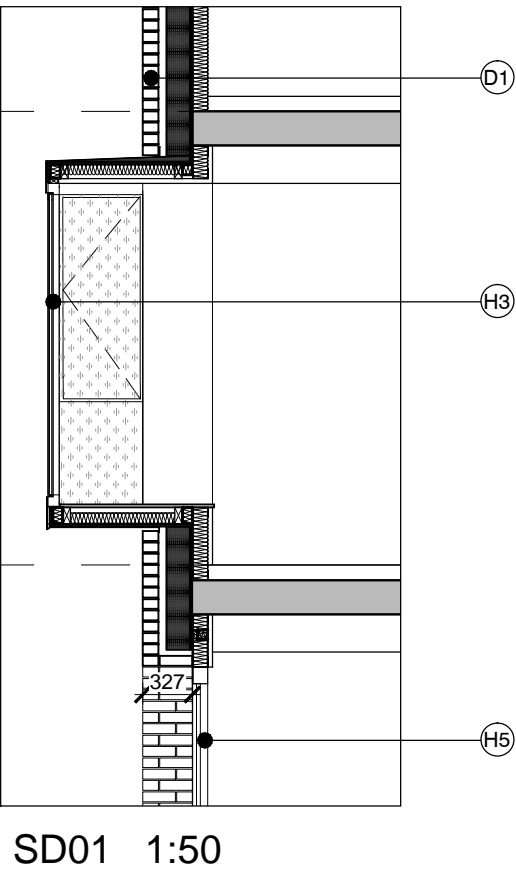
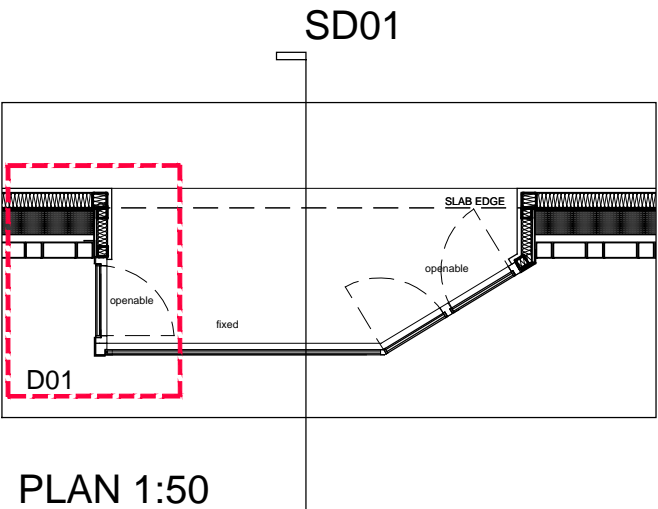
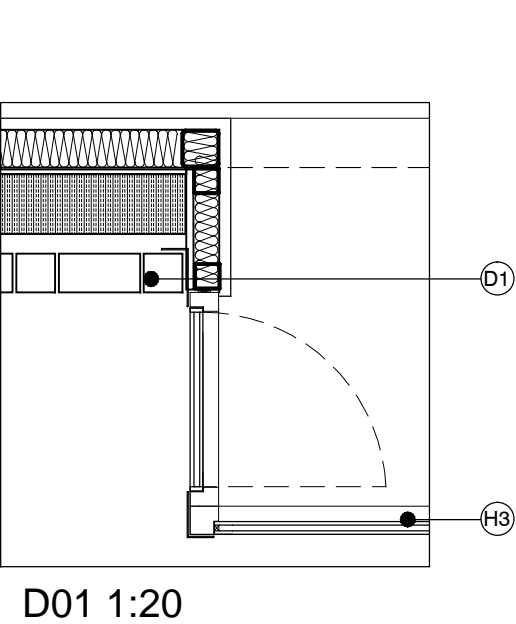
PLANNING

Diespeker Wharf  
38 Graham Street  
London N1 8JX  
020 7336 7777  
forename.surname@ptea.co.uk  
@ptearchitects  
www.pollardthomasedwards.co.uk

Pollard  
Thomas  
Edwards

project	job no	drawn	audited	scale	date
ABBEY ROAD REDEVELOPMENT London NW6	12-510-3	EA	TP	1:50@A3	JUL'15
drawing title	drawing number	revision			
Key Details - Mews Houses Oriel Window - Back Elev	510-3_PL_411	/			

E:\119 E1A.3 ABBEY ADEA DECEMBER 2014\1190314\_00\_14.D1 PLANNING\REVISED\119-3 D1\_411 PLANNING



GENERAL NOTES

- This drawing is © 2014 PTE architects
- Use figured dimensions only. DO NOT SCALE.
- All dimensions are in millimetres unless noted otherwise
- All levels are in metres above ordnance datum unless noted otherwise
- This drawing must be read in conjunction with all other relevant drawings and specifications from the Architect and other consultants
- If in doubt, ask

