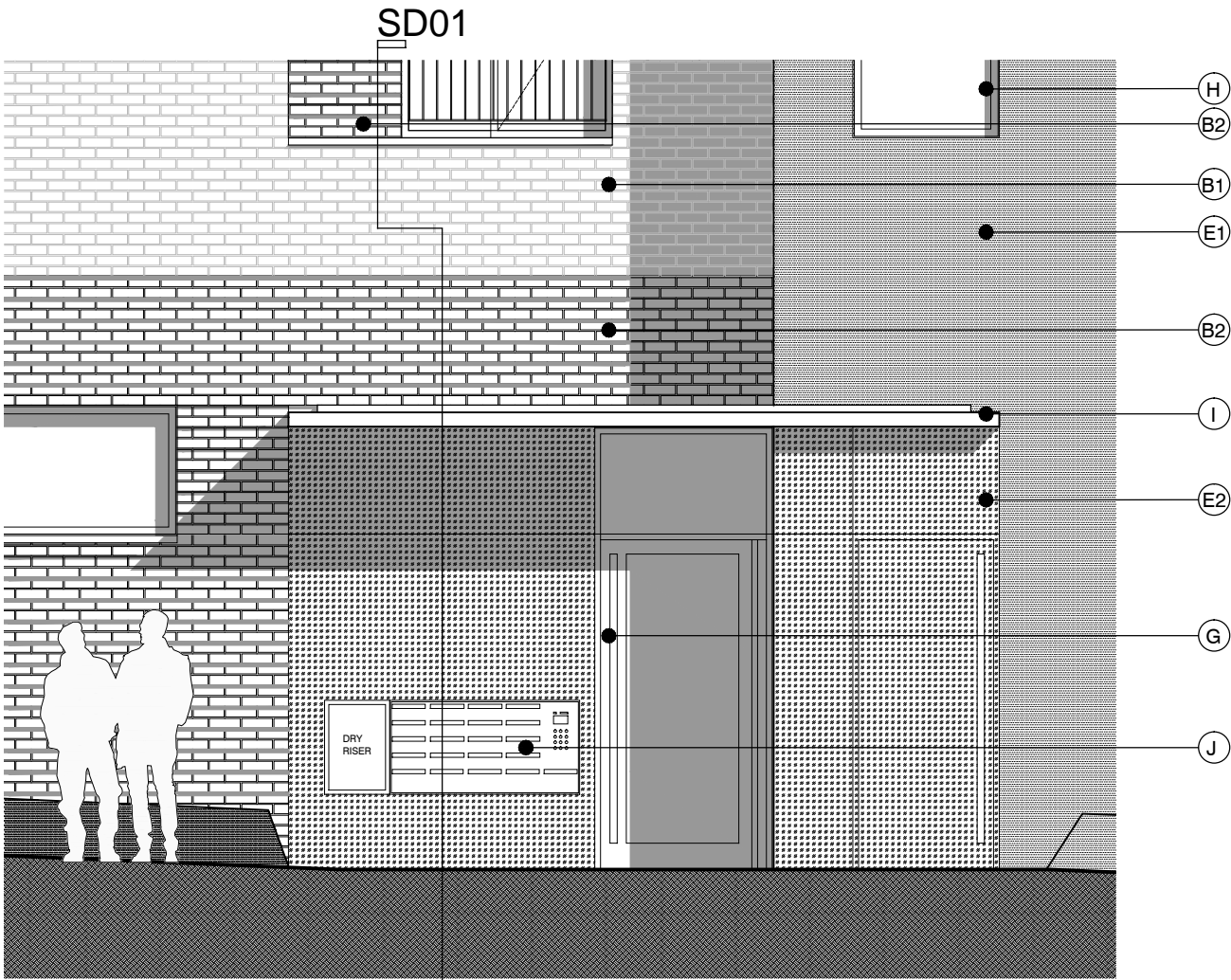
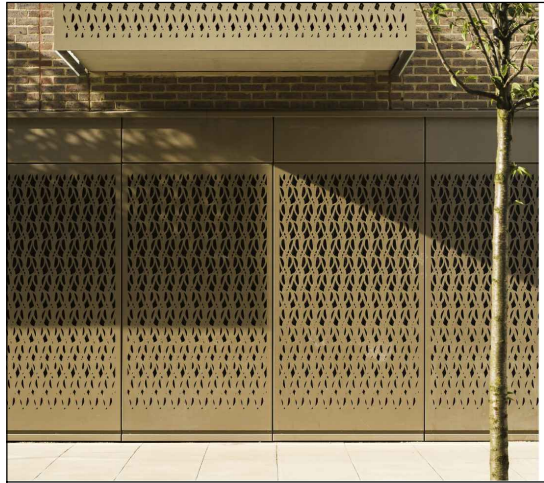
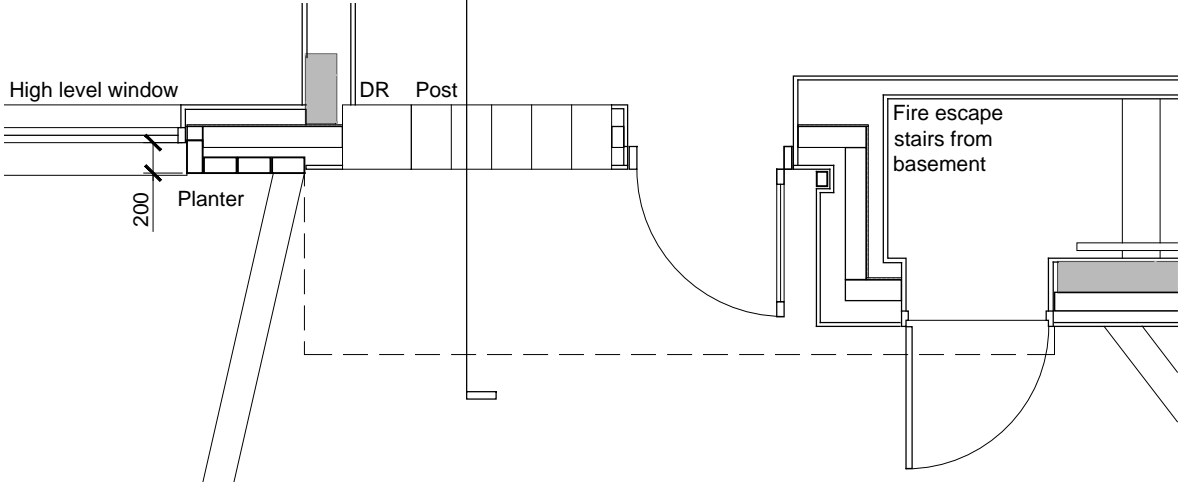


SECTION DETAIL 01



ELEVATION



PLAN

MATERIAL KEY - (MATERIALS TBC)

BRICKWORK (TYPES TO BE AGREED)

TYPE A: TYPE TO BE AGREED (BLOCKS H-L)

Allow for 2 types coloured mortar and recessed joints

- A1 - TYPE 1 - STRETCHER BOND
- A2 - TYPE 1 - STRETCHER w. RECESSED BANDING - Alternate recessed bands w. darker mortar
- A2B - AS A2 BUT WITH BRICK SLIP SYSTEM ON PROPRIETARY CARRIER RAIL
- A3 - TYPE 1 - VERTICAL STRETCHER BOND

TYPE B: TYPE TO BE AGREED (BLOCKS H-L)

Allow for 2 types coloured mortar and recessed joints

- B1 - TYPE 2 - STRETCHER BOND
- B2 - TYPE 2 - STRETCHER w RECESSED BANDING- Alternate recessed bands with darker mortar
- B2B - AS B2 BUT WITH BRICK SLIP SYSTEM ON PROPRIETARY CARRIER RAIL
- B3 - TYPE 2 - VERTICAL STRETCHER BOND

TYPE C: GLAZED BRICKWORK: STACK BONDED - COLOUR TO BE AGREED (ENTRANCES)

Allow for coloured mortar and flush joints

TYPE D: WHITE - TYPE TO BE AGREED (MEWS HOUSES)

Allow for coloured mortar and recessed joints

- D1 - TYPE 3 - FLEMISH BOND
  - D2 - TYPE 3 - FLEMISH BOND TEXTURED/ HIT & MISS PANELS
- Free area to meet daylight requirements

CLADDING

- E1 - PPC METAL PANEL: bronze effect metal panel with anodized finish, hidden fixings and minimal joints.
- E2 - PERFORATED METAL: bronze effect metal panel with anodized finish, hidden fixings and minimal joints - allow for non-uniform setting out of perforations - details to be agreed. (Lighting above passageway soffit)

OPENINGS

- F - RECONSTITUTED STONE: on bracket to form architrave detail
- G - CURTAIN WALLING: curtain walling with 75mm aluminum capping at base, bronze effect timber and aluminum composite framed doors to match, opaque glass spandrel panels.
- H - WINDOWS/ DOORS: bronze effect timber and aluminum composite framed units with anodized finish -colour TBC. Allow for full brick reveal to all windows with metal lintel and cill. Brick reveals to all window returns.
- H1 - SPANDREL PANELS: Opaque glass bronze effect aluminum framed units with anodized finish.
- H2 - DORMER WINDOW: GRP Preformed unit with metal cladding - Colour TBC.
- H3 - ORIEL WINDOW: Projected oriel window with metal cladding - Colour TBC.
- H4 - FEATURE WINDOW: Fixed glass with side openable panel window. Bronze effect aluminum frame - Colour TBC.
- H5 - BIFOLDING DOORS: Triple panel bi-folding doors with bronze effect aluminum frame & trickle vent.
- I - CANOPIES: Pre-formed metal boxed canopy in bronze metallic finish with hidden structure and integral lighting.
- J - RESIDENTIAL ENTRANCES to Blocks: Through-the-wall mailbox system (DAD or similar) with one-piece front plate with integrated door entry system - Colour TBC.
- K - LOUVRES: Aluminium PPC louvred doors/panels with acoustic louvers behind

RAILINGS/ ROOF ETC.

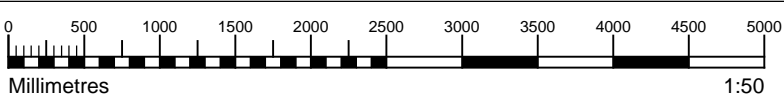
- L1 - METAL RAILING BALUSTRADE: vertical flats (approx 65 x 8mm) with anodized finish. Colour TBC.
- L1B - JULIET BALCONY: vertical flats (approx 65 x 8mm) with anodized finish. Colour TBC.
- L2 - METAL RAILING BALUSTRADE: vertical flats (approx 65 x 8mm) with anodized finish extending to balcony soffit with metal plate fascia fixed to balcony edge.
- L3 - METAL RAILINGS: formed from PPC vertical flats (approx 65 x 8mm)
- O - COPING: Precast concrete or stone coping to parapet wall - allow for reinforcement back to structure.
- P - DARK ZINC/ SLATE ROOF: to Mews Houses with metal standing seam - colour tbc.
- Q - STONE PAVING: to balconies
- R - RENDERED SOFFIT
- DRAINAGE
- S - RAINWATER GOODS: Alumasc aqualine or similar box gutter and circular downpipes PPC coated. Colour TBC

/ 14.08.15 ISSUED FOR PLANNING

EA TP

rev	date	description	drawn	audited
drawing status				

PLANNING



GENERAL NOTES

This drawing is © 2014 PTE architects

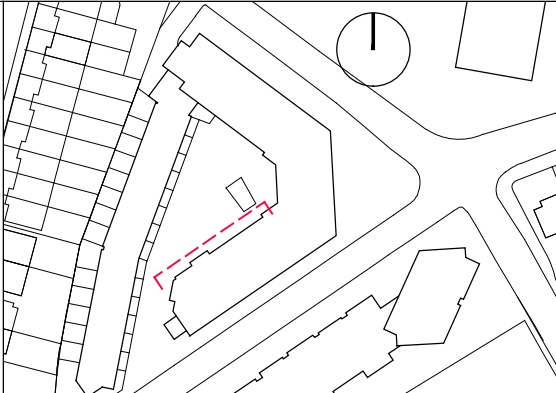
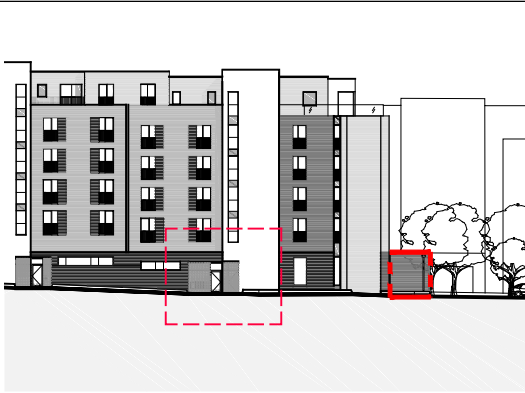
Use figured dimensions only. DO NOT SCALE.

All dimensions are in millimetres unless noted otherwise

All levels are in metres above ordnance datum unless noted otherwise

This drawing must be read in conjunction with all other relevant drawings and specifications from the Architect and other consultants

If in doubt, ask



Diespeker Wharf  
38 Graham Street  
London N1 8JX  
020 7336 7777  
forename.surname@ptea.co.uk  
@ptearchitects  
www.pollardthomasedwards.co.uk

Pollard  
Thomas  
Edwards

project	job no	drawn	audited	scale	date
ABBAY ROAD REDEVELOPMENT London NW6	12-510-3	EA	TP	1:50@A3	JUL'15
drawing title	drawing number	revision			
Key Details Typ. courtyard residential entrance	510-3_PL_403	/			

E:\119 E1A.3 ABBEY ADEA DECEMBER 2014\1190314E.DWG 14.08.15 PLANNING REVISION 1.0 DI 1019 PLANNING