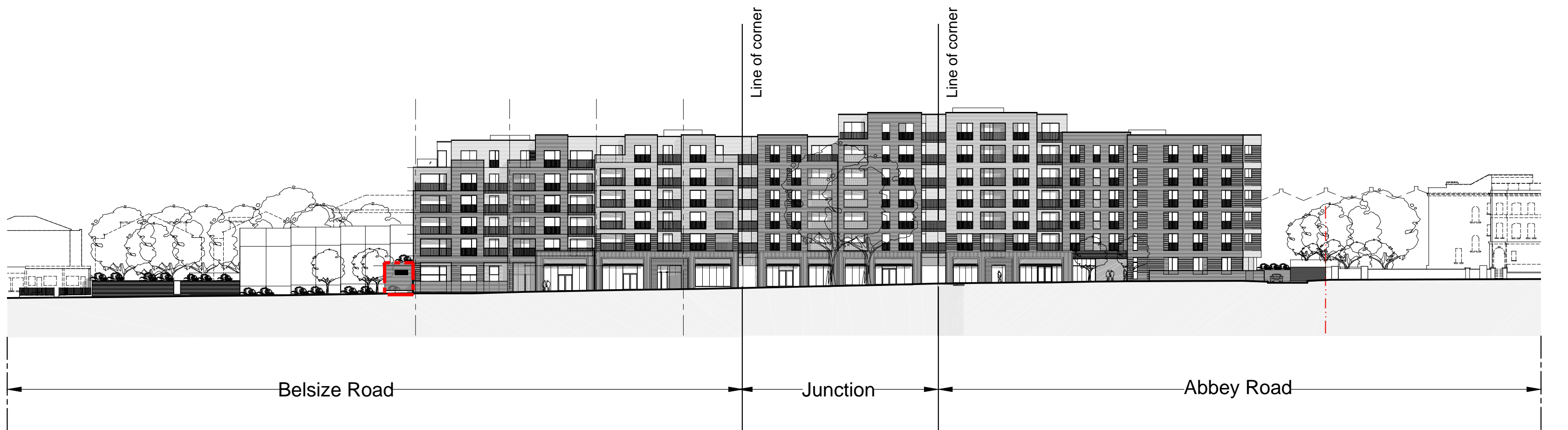
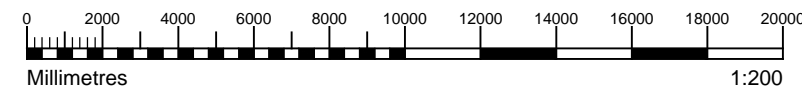
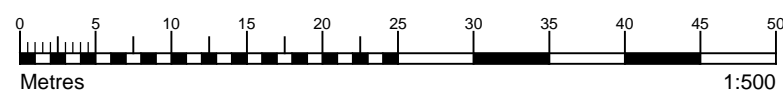




1 STREET ELEVATION  
1:200



1b STREET (SITE) ELEVATION  
1:500



GENERAL NOTES
This drawing is © 2014 PTE architects
Use figured dimensions only. DO NOT SCALE.
All dimensions are in millimetres unless noted otherwise
All levels are in metres above ordnance datum unless noted otherwise
This drawing must be read in conjunction with all other relevant drawings and specifications from the Architect and other consultants
If in doubt, ask

#### MATERIAL KEY - (MATERIALS TBC)

##### BRICKWORK (TYPES TO BE AGREED)

TYPE A: TYPE TO BE AGREED (BLOCKS H-J)

Allow for 2 types coloured mortar and recessed joints

- A1 - TYPE 1 - STRETCHER BOND  
A2 - TYPE 1 - STRETCHER w. RECESSED BANDING - Alternate recessed bands w. darker mortar  
A3 - AS A2 BUT WITH BRICK SLIP SYSTEM ON PROPRIETARY CARRIER RAIL  
B1 - TYPE 2 - STRETCHER BOND  
B2 - TYPE 2 - STRETCHER w. RECESSED BANDING - Alternate recessed bands with darker mortar  
B3 - AS B2 BUT WITH BRICK SLIP SYSTEM ON PROPRIETARY CARRIER RAIL  
B4 - TYPE 2 - VERTICAL STRETCHER BOND

##### BRICKWORK CONT.

TYPE C: GLAZED BRICKWORK: STACK BONDED - COLOUR TO BE AGREED (ENTRANCES)

Allow for coloured mortar and flush joints

- D1 - TYPE 3 - FLEMISH BOND  
D2 - TYPE 3 - FLEMISH BOND TEXTURED/ HIT & MISS PANELS  
Free area to meet daylight requirements

##### CLADDING

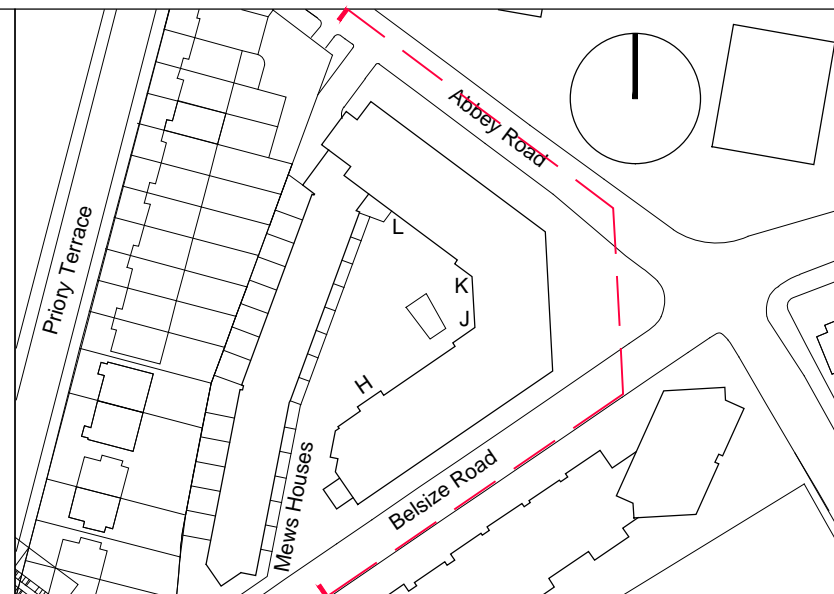
- E1 - PPC METAL PANEL: bronze effect metal panel with anodized finish, hidden fixings and minimal joints  
E2 - PERFORATED METAL: bronze effect metal panel with anodized finish, hidden fixings and minimal joints - allow for non-uniform setting out of perforations - details to be agreed. (Lighting above passageway soffit)

##### OPENINGS

- F - RECONSTITUTED STONE: on bracket to form architrave detail  
G - CURTAIN WALLING: curtain walling with 75mm aluminum cladding at base, bronze effect timber and aluminum composite framed doors to match, opaque glass spandrel panels  
H - WINDOWS/ DOORS: bronze effect timber and aluminum composite framed units with anodized finish - colour TBC  
Allow for full brick reveal to all windows with metal lintel and sill. Brick reveals to all window returns  
H1 - SPANDREL PANELS: Opaque glass bronze effect aluminum framed units with anodized finish  
H2 - DOORER WINDOW: GRP Preformed unit with metal cladding - Colour TBC  
H3 - ORIEL WINDOW: Projected oriel window with metal cladding - Colour TBC  
H4 - FEATURE WINDOW: Fixed glass with side operable panel window. Bronze effect aluminum frame - Colour TBC  
H5 - BIFOLDING DOORS: Triple panel bi-folding doors with bronze effect aluminum frame & trickle vent  
I - CANOPIES: Pre-formed metal boxed canopy in bronze metallic finish with hidden structure and integral lighting  
J - RESIDENTIAL ENTRANCES TO Blocks: Through-the-wall mailbox system (DAD or similar) with one-piece front plate with integrated door entry system - Colour TBC  
J1 - RESIDENTIAL ENTRANCES to Mews Houses: Solid timber front door with through-the-wall mailbox system with one-piece front plate with integrated door entry system - Colour TBC  
K - LOUVRES: Aluminum PPC louvre doors/panels with acoustic louvers behind

##### RAILINGS/ ROOF ETC.

- L1 - METAL RAILING BALUSTRADE: vertical fets (approx 65 x 8mm) with anodized finish. Colour TBC  
L1B - JULIET BALCONY: vertical fets (approx 65 x 8mm) with anodized finish Colour TBC  
L2 - METAL RAILING BALUSTRADE: vertical fets (approx 65 x 8mm) with anodized finish extending to balcony soffit with metal plate fascia fixed to balcony edge  
L3 - METAL RAILINGS: formed from PPC vertical fets (approx 65 x 8mm)  
O - COPING: Precast concrete or stone coping to parapet wall - allow for reinforcement back to structure  
P - DARK ZINC/ SLATE ROOF: to Mews Houses with metal standing seam - colour tbc.  
Q - STONE PAVING: to balconies  
R - RENDERED SOFFIT  
S - DRAINAGE  
RAINWATER GOODS: Alumasc equiline or similar box gutter and circular downpipes PPC coated. Colour TBC



rev.	date	description	drawn	audited
1	14.08.15	ISSUED FOR PLANNING	EA	TP
drawing status				
PLANNING				
Diespiker Wharf 38 Graham Street London N1 8JX 020 7336 7777 forename.surname@pte.co.uk @ptearchitects www.pollardthomasedwards.co.uk				
project				
job no.				
drawn				
audited				
scale				
date				
ABBEY ROAD REDEVELOPMENT London NW6				
12-510-3 EA TP Varies@A1 JUL'15				
drawing title				
drawing number				
revision				
General Arrangement Blocks - Street Elevations				
510-3_PL_300				
-				