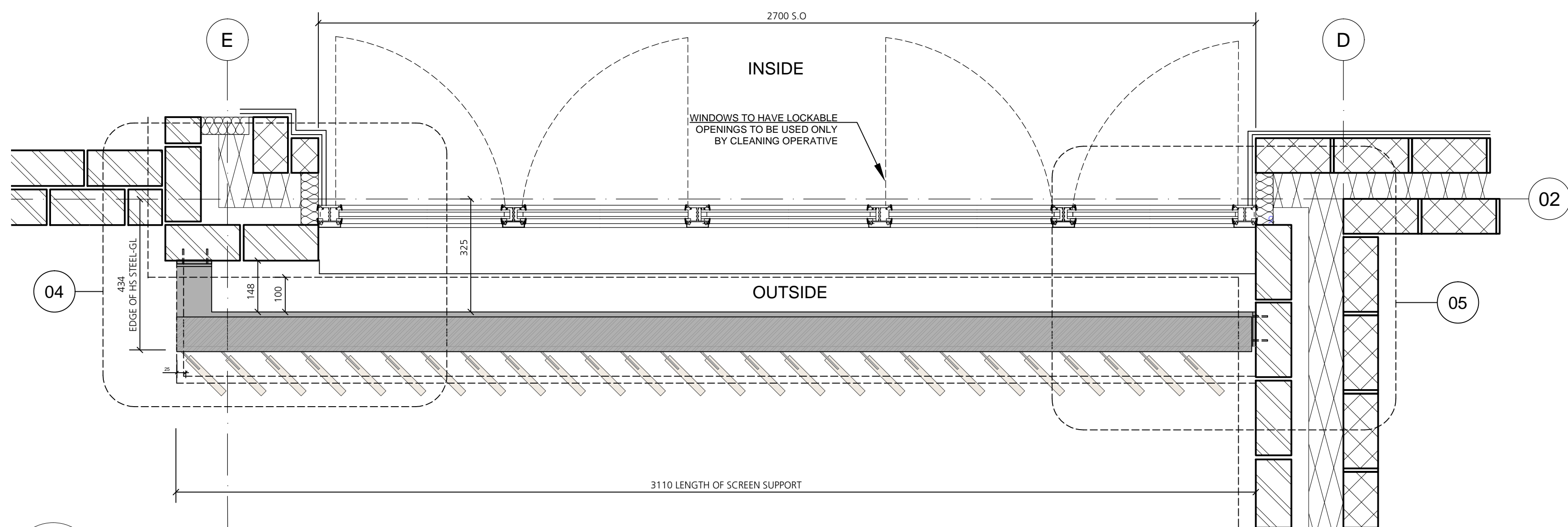
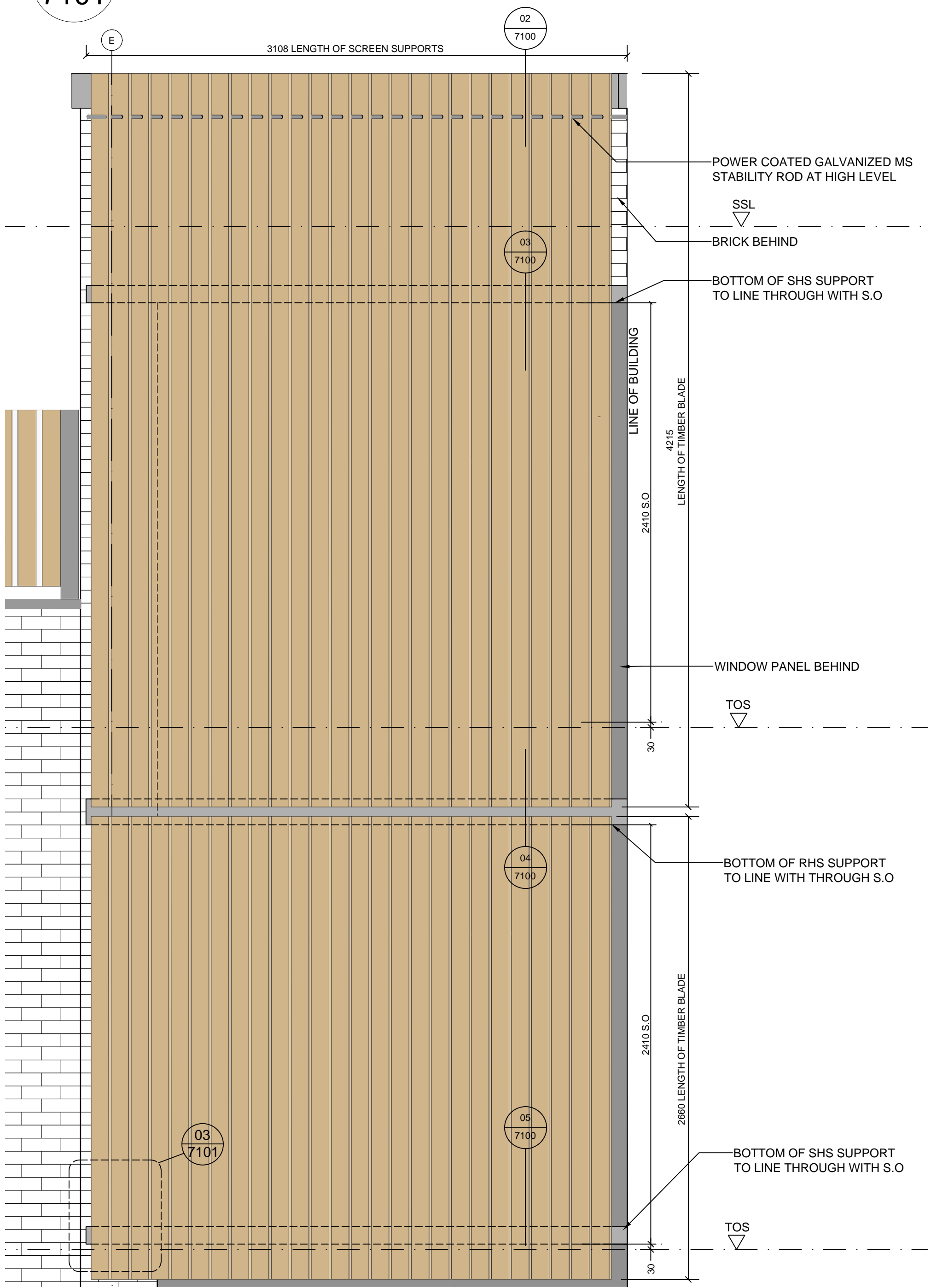


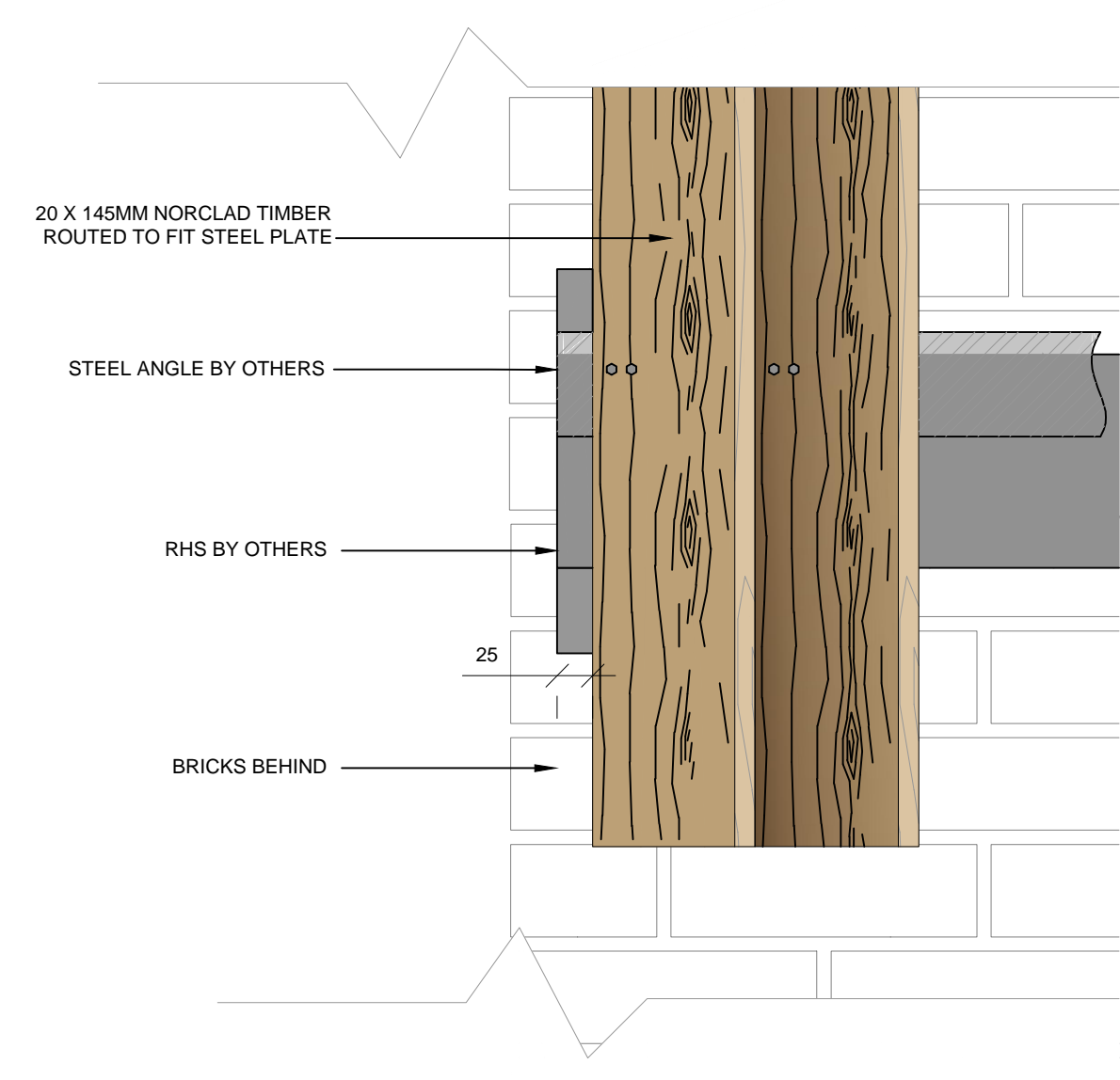
Do not scale from drawings unless by agreement with HTA. Use figured dimensions only. Check all dimensions on site prior to commencing the works. Drawing to be read in conjunction with other relevant consultant information.  
 This drawing is the copyright of HTA Design LLP and must not be copied or reproduced in part, or in whole, without the express permission of HTA Design LLP. Drawing to be read in conjunction with outline specification.



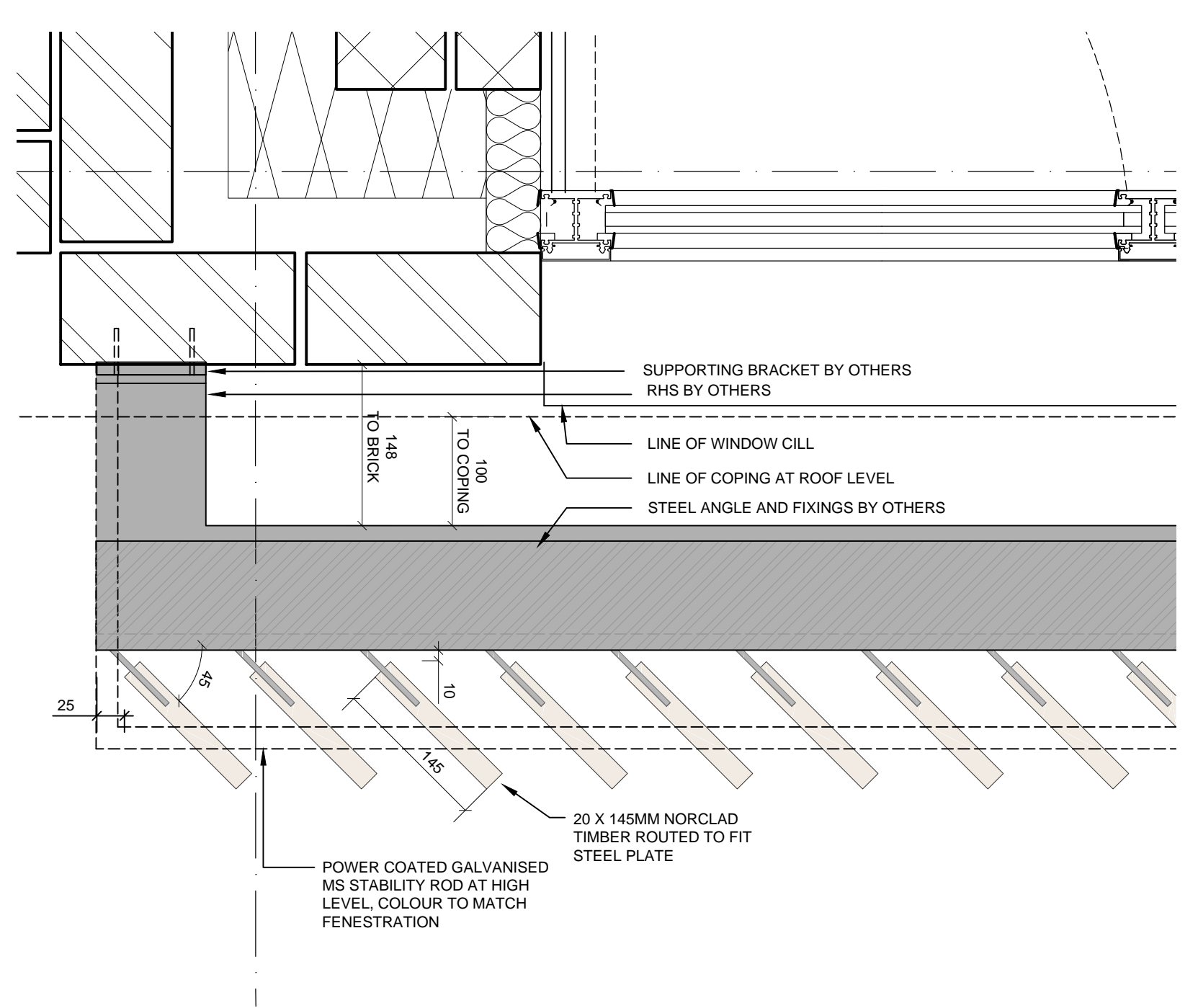
**01**  
**7101** Timber Screen - Rear  
1:10 PLAN



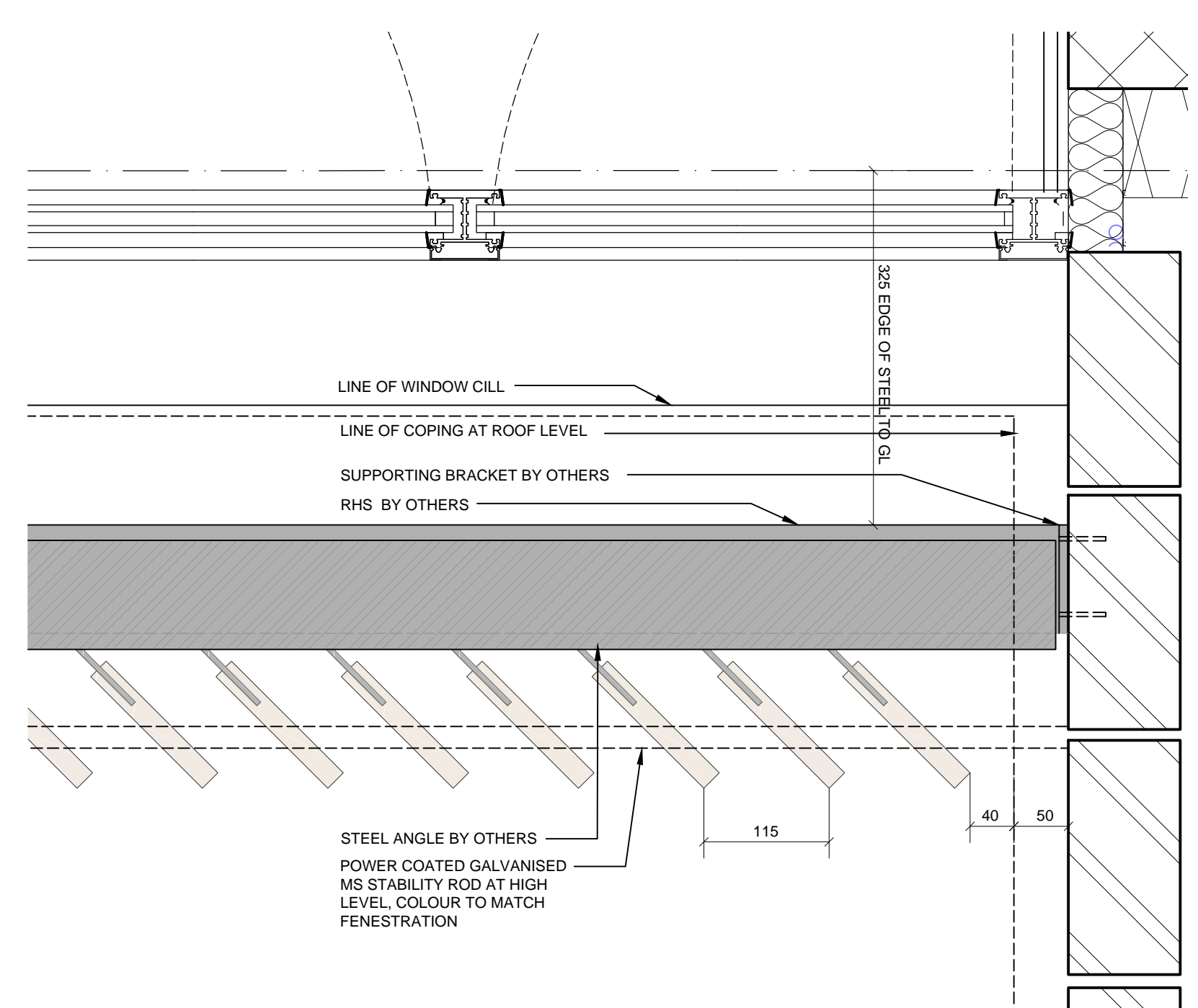
**02**  
**7101** Timber screen - Rear elevation  
1:20 ELEVATION



**03**  
**7101** Bottom corner timber fixing detail  
1:5 ELEVATION



**04**  
**7101** Timber mount detail (Angled)  
1:5 PLAN



**05**  
**7101** Timber mount detail (Straight)  
1:5 PLAN

**NOTES:**  
 ALL STEEL TO BE GALVANISED MILD STEEL  
 ALL WELDS THAT WOULD BE VISABLE ON THE FINISHED WORK SHALL BE GROUND SMOOTH PRIOR TO GALVANISING  
 ALL STEEL TO BE POWDER COATED TO MATCH WINDOWS

**SCREEN DETAILS:**  
 20X145MM NORCLAD BLADES ROTATED AT 45 DEGREES.  
 115MM CENTRES UNLESS INDICATED OTHERWISE

Rev. Date Drawn Description  
 B 26.11.15 TKG Screen amended to pocket comments  
 A 01.10.15 YME Setting out amended, notes added  
 . 22.09.15 TKG Issued for comments

**FOR CONSTRUCTION**  
 Client / project  
**Primus**  
**Willingham Terrace, NW1**  
 Drawing title  
**Timber Screen**  
**Rear Elevation**

Drawing number  
**WTC AC 14-7101** revision  
 scale @ A1 project code  
 1:20 TKG PLL-WTC

HTA Design LLP  
 105-110 Kenilsh Town Road  
 London, NW1 9PX  
 020 7485 8555  
 www.hta.co.uk

HTA Design LLP  
 21 State's Steps  
 Edinburgh, EH8 8PB  
 0131 344 4742  
 www.hta.co.uk