

Do not scale from drawings unless by agreement with HTA. Use figured dimensions only. Check all dimensions on site prior to commencing the works. Drawing to be read in conjunction with other relevant consultants information.

This drawing is the copyright of HTA Architects Ltd and must not be copied or reproduced in part, or in whole, without the express permission of HTA Architects Ltd. Drawing to be read in conjunction with outline specification.

Legend: -
To be read with Outline Specification - WTC-AC 14-481

- NOTES:**
- ALL STEEL TO BE GALVANISED MILD STEEL
 - ALL WELDS THAT WOULD BE VISIBLE ON THE FINISHED WORK SHALL BE GROUND SMOOTH PRIOR TO GALVANISING
 - ALL STEEL TO BE POWDER COATED-COLOUR TO MATCH WINDOWS

SCREEN DETAILS

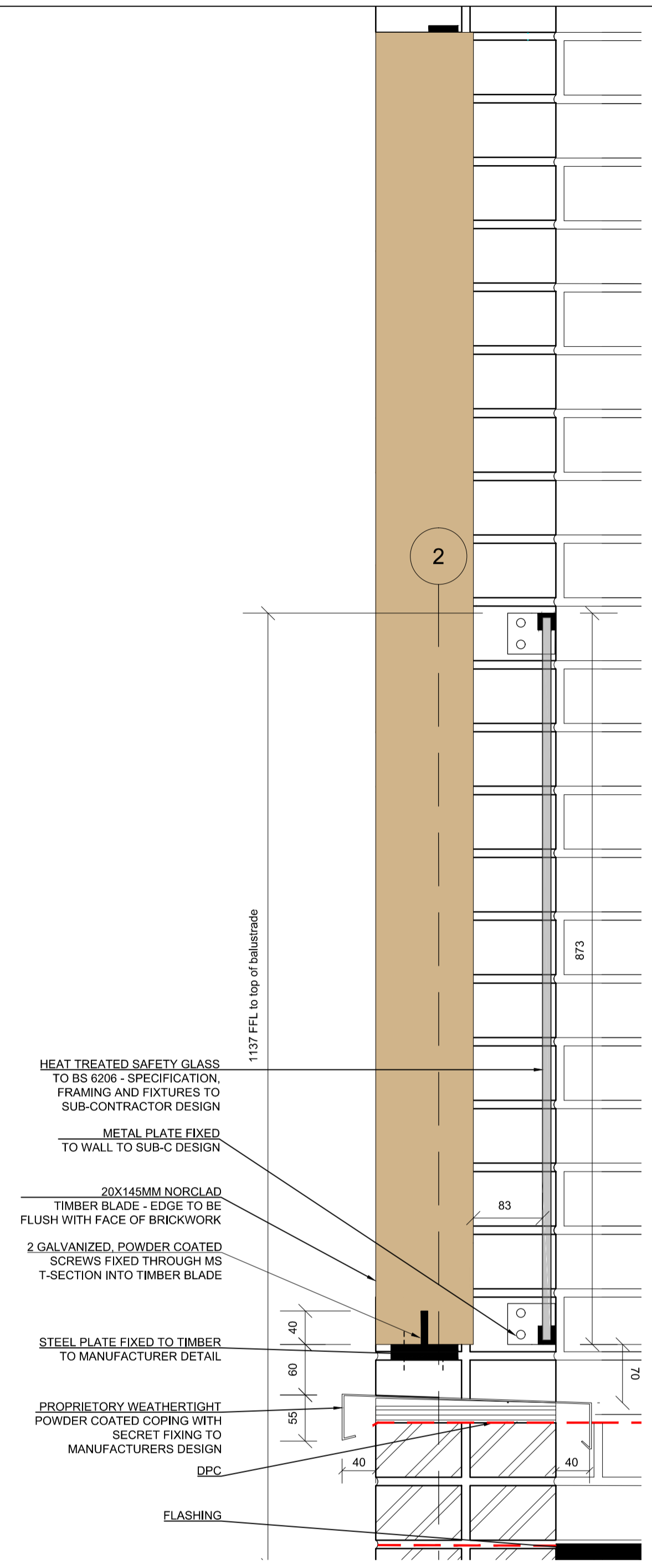
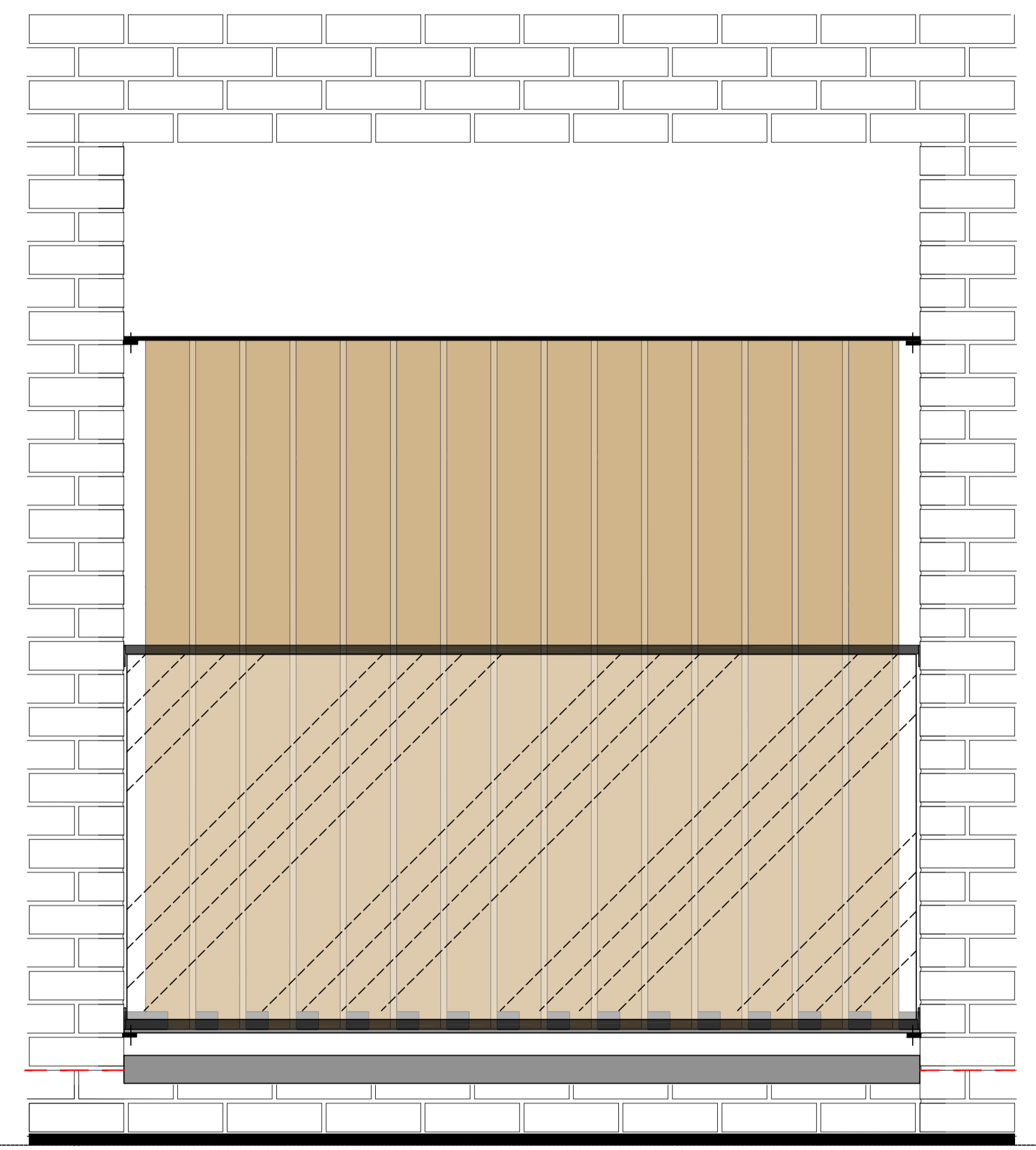
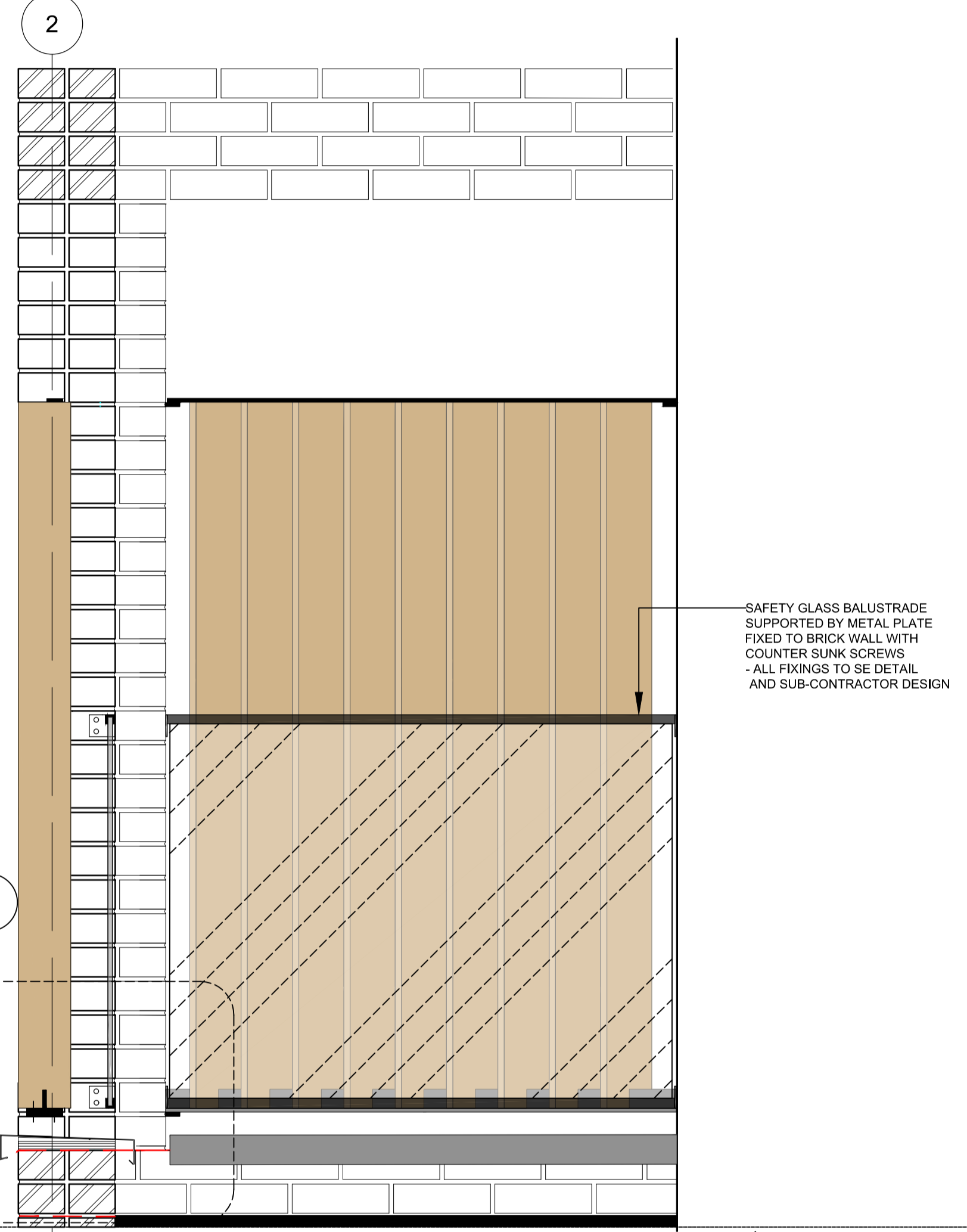
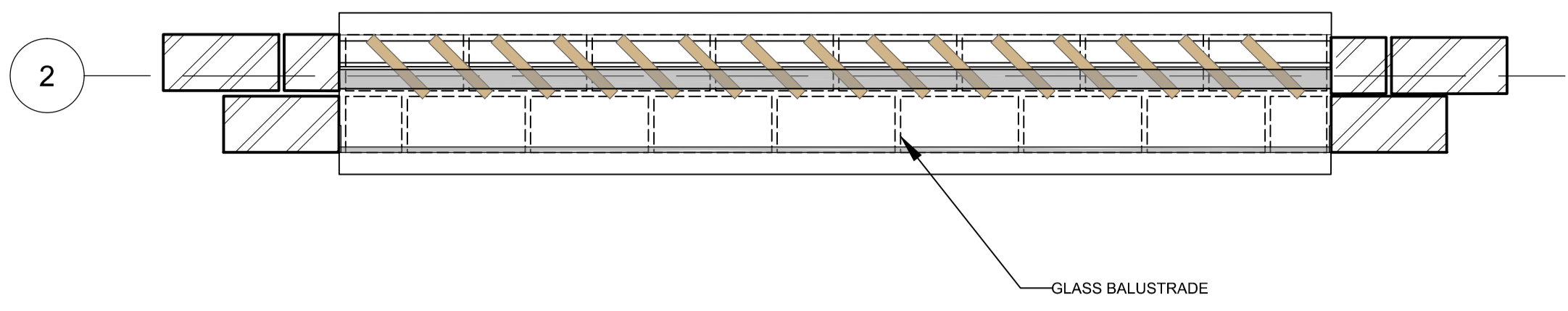
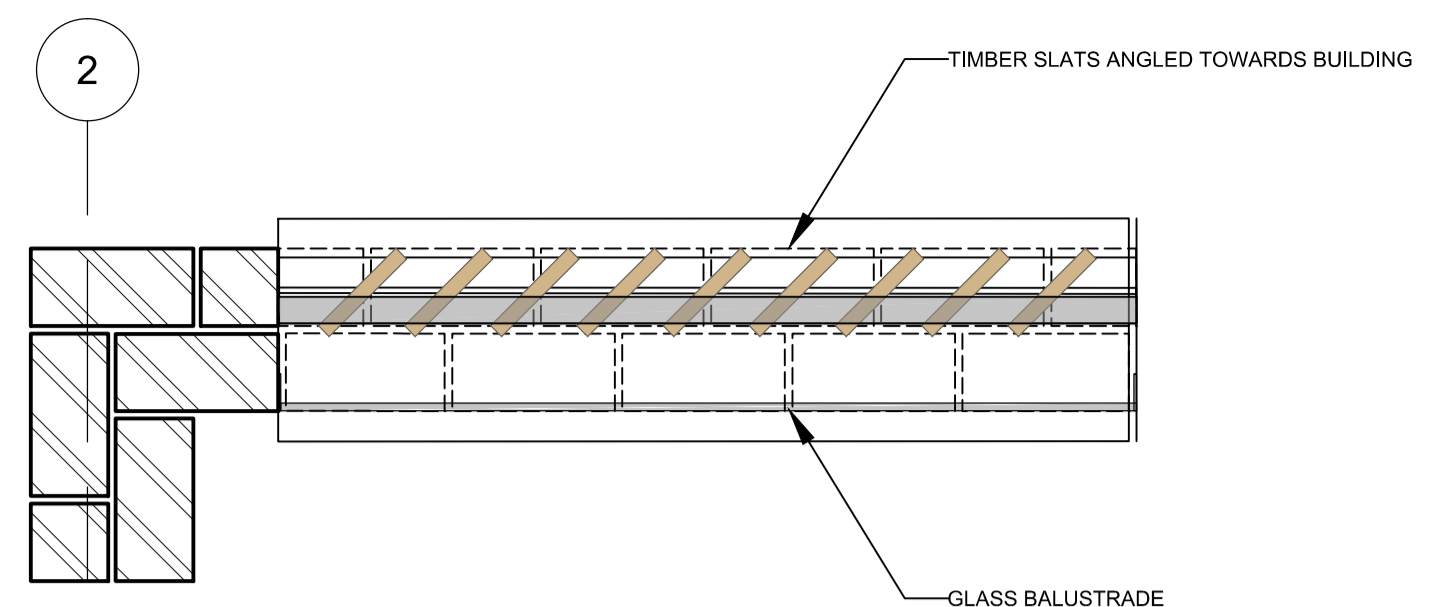
NORCLAD 20X145MM MICROSHADES
BRUNNEA EUROPEAN REDWOOD BLADES
ROTATED AT 45 DEGREES.
114MM CENTRES UNLESS INDICATED OTHERWISE

TIMBER FIXED TO MS FRAME SUPPORTED BY 100MM SHS POSTS.
ALL METAL ELEMENTS POWDER COATED TO MATCH COLOUR OF FENESTRATION.

COMPLIANCE

TO MEET THE LOADING REQUIREMENTS IN BUILDING REGULATIONS PART K GIVEN IN BS-EN-1991-1-1 WITH UK NATIONAL ANNEX PD6688-1-1

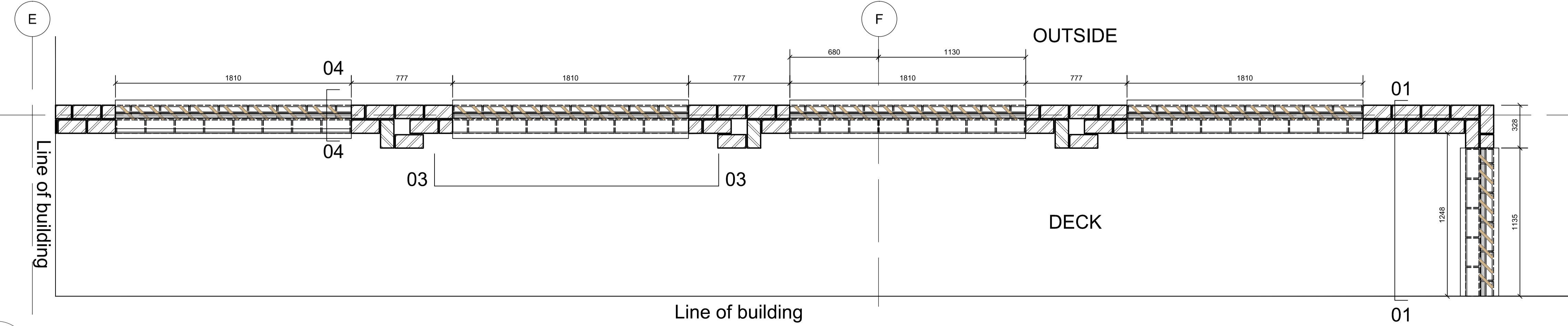
WINDPOSTS TO SE DESIGN AND SPEC



01 7104 Timber screen - End of deck 1:10 ELEVATION/SECTION

03 7104 Timber screen - Typical 1:10 ELEVATION

04 7104 Typical cill detail 1:5 PARAPET DETAIL



02 7104 Timber screen 1:20 SETTING OUT PLAN

B 11.12.15 TKG Glazing thickness amended, T-section steel added
A 23.11.15 TKG Engineering brick removed to Primus comment
19.11.15 TKG Issued for construction

FOR CONSTRUCTION

client / project
Primus
Willingham Terrace, NW1

drawing title
Timber Screen
First Floor

drawing number
WTC AC 14-7104

scale @ A1
1:10

originated by
TKG

revision
B

project code
PLL-WTC

HTA Design LLP
106-110 Kenilish Town Road
London, NW1 9PX
020 7485 8555
www.hta.co.uk

HTA Design LLP
21 Slater's Steps
Edinburgh, EH6 8PB
0131 344 4742
www.hta.co.uk

hta