

Do not scale from drawings unless by agreement with HTA. Use figured dimensions only. Check all dimensions on site prior to commencing the works. Drawing to be read in conjunction with other relevant consultants information.

This drawing is the copyright of HTA Architects Ltd and must not be copied or reproduced in part, or in whole, without the express permission of HTA Architects Ltd. Drawing to be read in conjunction with outline specification.

Legend: -  
To be read with Outline Specification - WTC-AC 14-481

- NOTES:
- ALL STEEL TO BE GALVANISED MILD STEEL
  - ALL WELDS THAT WOULD BE VISIBLE ON THE FINISHED WORK SHALL BE GROUND SMOOTH PRIOR TO GALVANISING
  - ALL STEEL TO BE POWDER COATED-COLOUR TO MATCH WINDOWS

SCREEN DETAILS

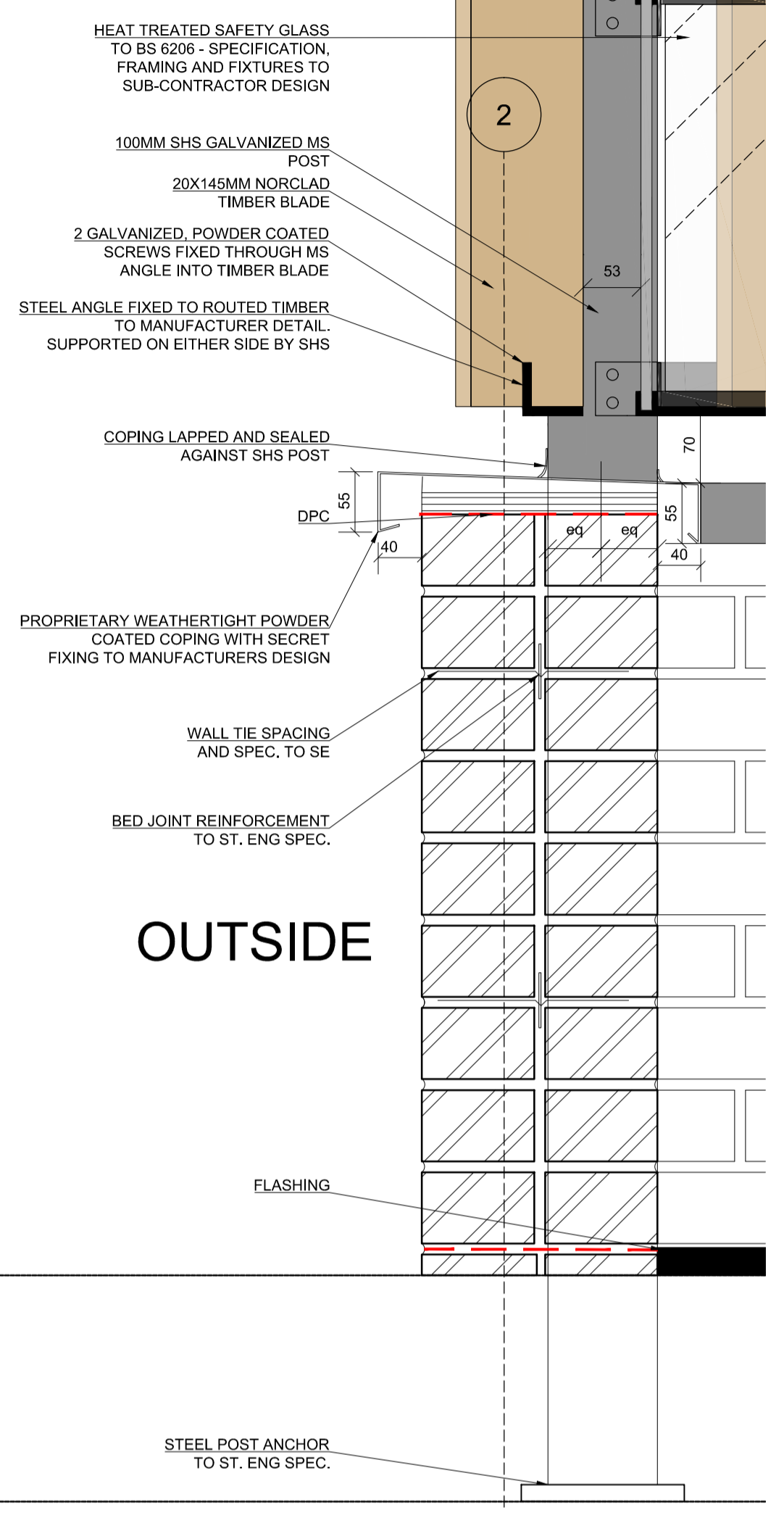
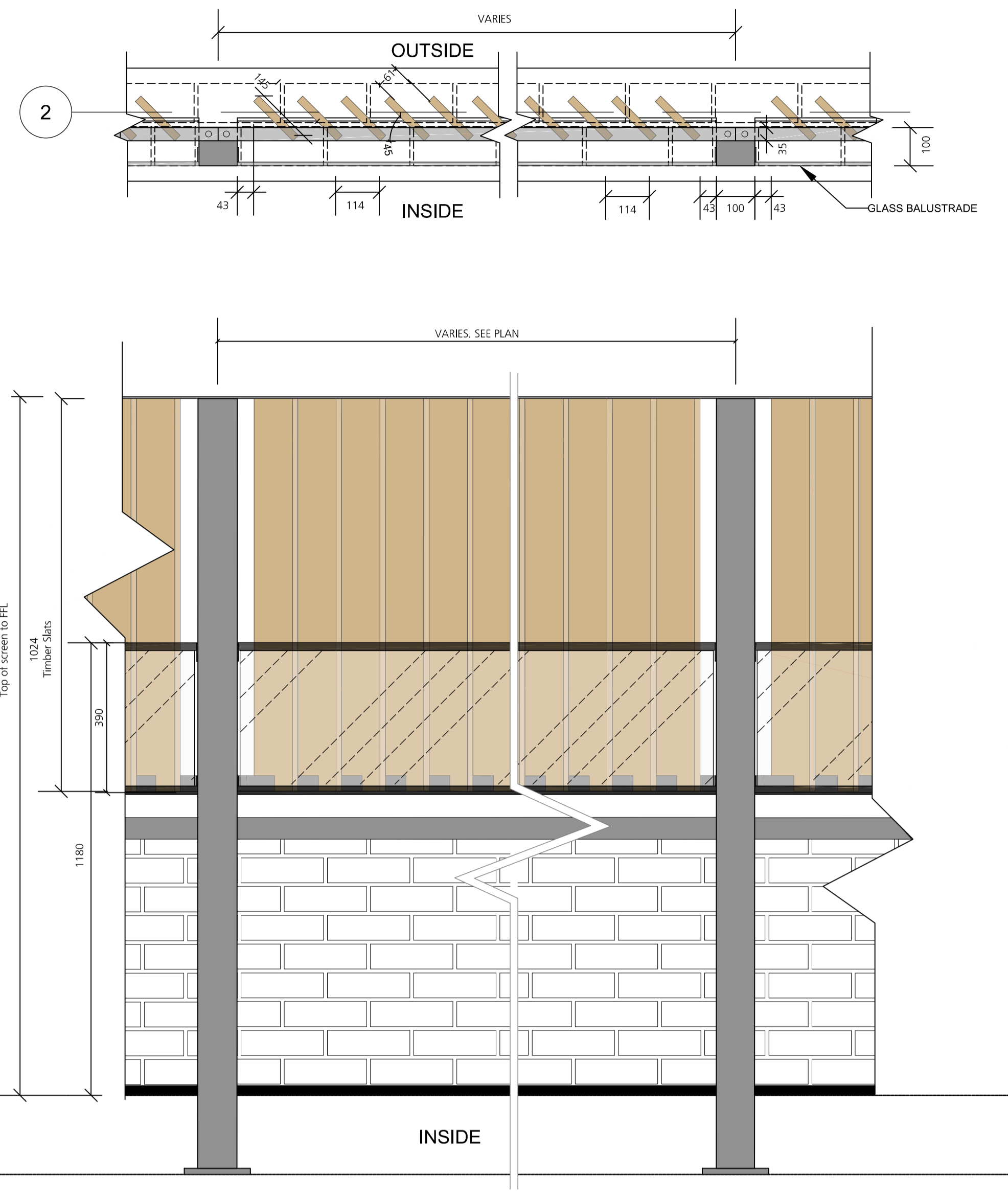
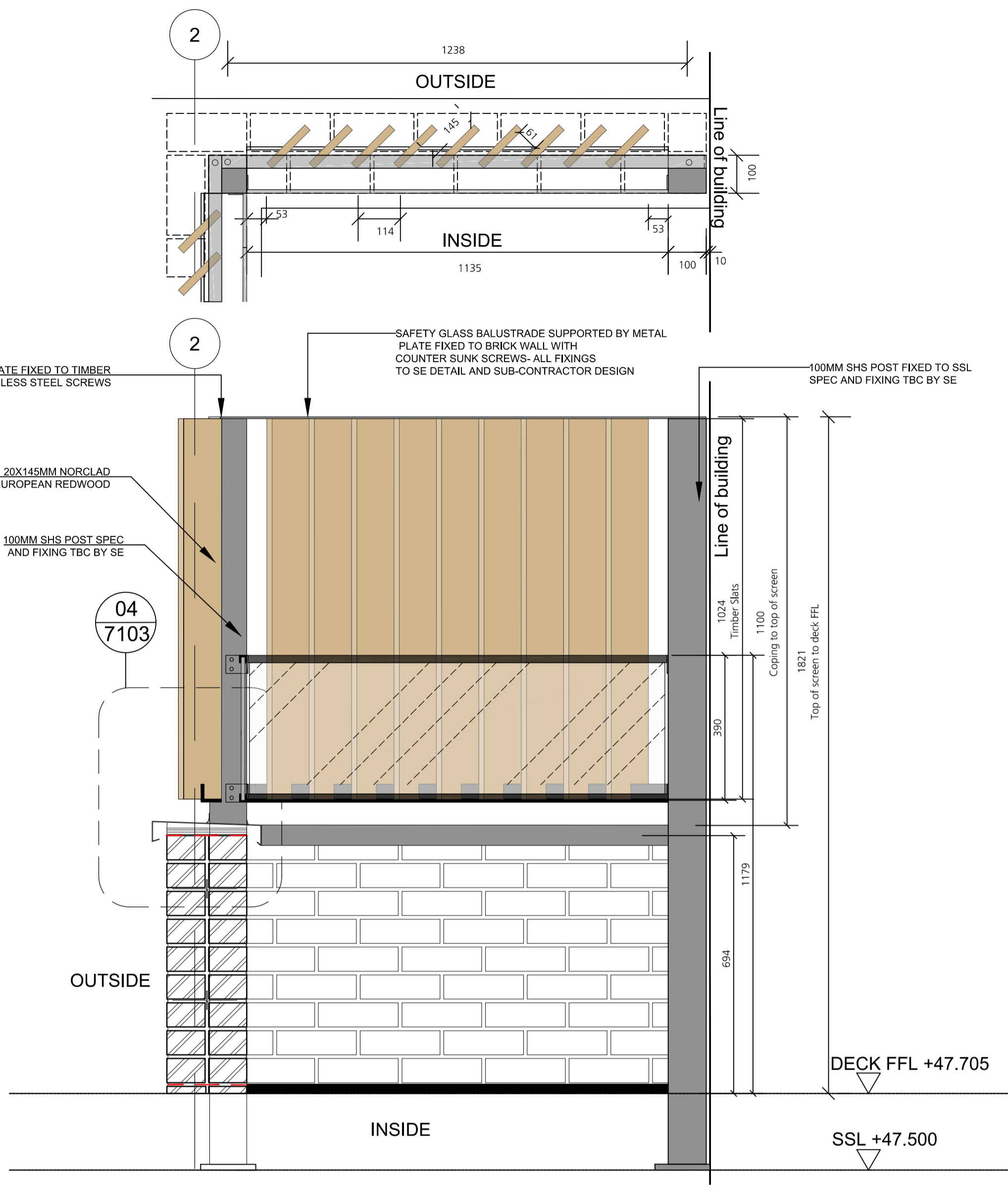
NORCLAD 20X145MM MICROSHADES BRUNNEA EUROPEAN REDWOOD BLADES ROTATED AT 45 DEGREES. 114MM CENTRES UNLESS INDICATED OTHERWISE

TIMBER FIXED TO MS FRAME SUPPORTED BY 100MM SHS POSTS. ALL METAL ELEMENTS POWDER COATED TO MATCH COLOUR OF FENESTRATION.

COMPLIANCE

TO MEET THE LOADING REQUIREMENTS IN BUILDING REGULATIONS PART K GIVEN IN BS-EN-1991-1-1 WITH UK NATIONAL ANNEX PD6688-1-1

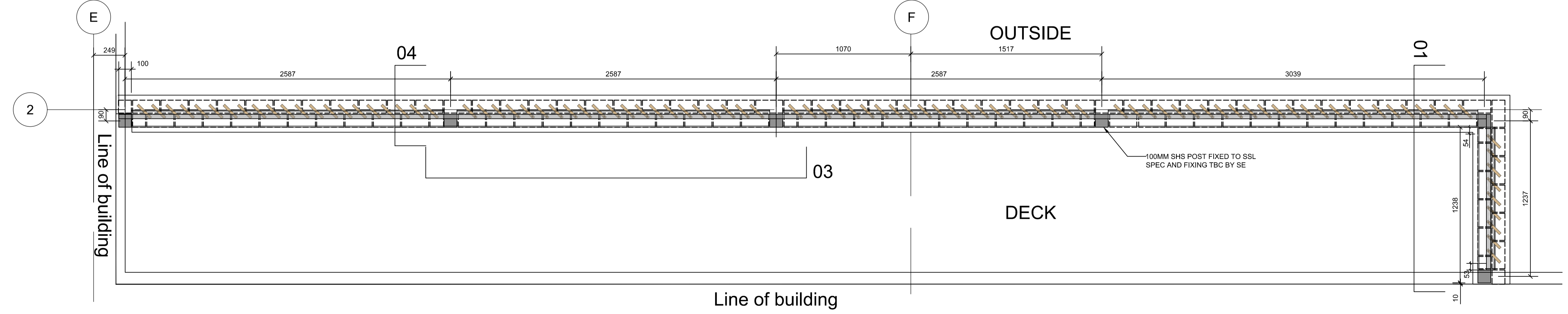
WIND POSTS/PARAPET POSTS TO SE DESIGN AND SPEC



01 Timber Screen - End of deck  
7103 1:10 ELEVATION / SECTION

03 Timber screen - Typical  
7103 1:10 ELEVATION

04 Cill detail  
7103 1:5 PARAPET SECTION



02 Second floor timber screen to external deck  
7103 1:20 SETTING OUT PLAN

Rev	Date	By	Description
D	11.12.15	TKG	Glass screen added to Pocket comment, Steel angle added
C	23.11.15	TKG	Engineering brick removed to Primus comment
B	19.11.15	TKG	Timber screen updated, DPC amended, issued for construction
A	01.10.15	VME	Notes, corner plan & elevation added.
-	22.09.15	TKG	Issued for comments

Status: **FOR CONSTRUCTION**

Client / project: **Primus**  
**Willingham Terrace, NW1**

Drawing title: **Timber Screen**  
**Second Floor**

Drawing number: **WTC AC 14-7103** revision: **D**

Scale @ A1: **1:20** originated by: **TKG** project code: **PLL-WTC**

HTA Design LLP  
106-110 Kenilsh Town Road  
London, NW1 9PX  
020 7485 8555  
www.hta.co.uk

HTA Design LLP  
21 Slater's Steps  
Edinburgh, EH6 8PB  
0131 344 4742  
www.hta.co.uk