

KEY / DESCRIPTION OF FIT-OUT WORKS:

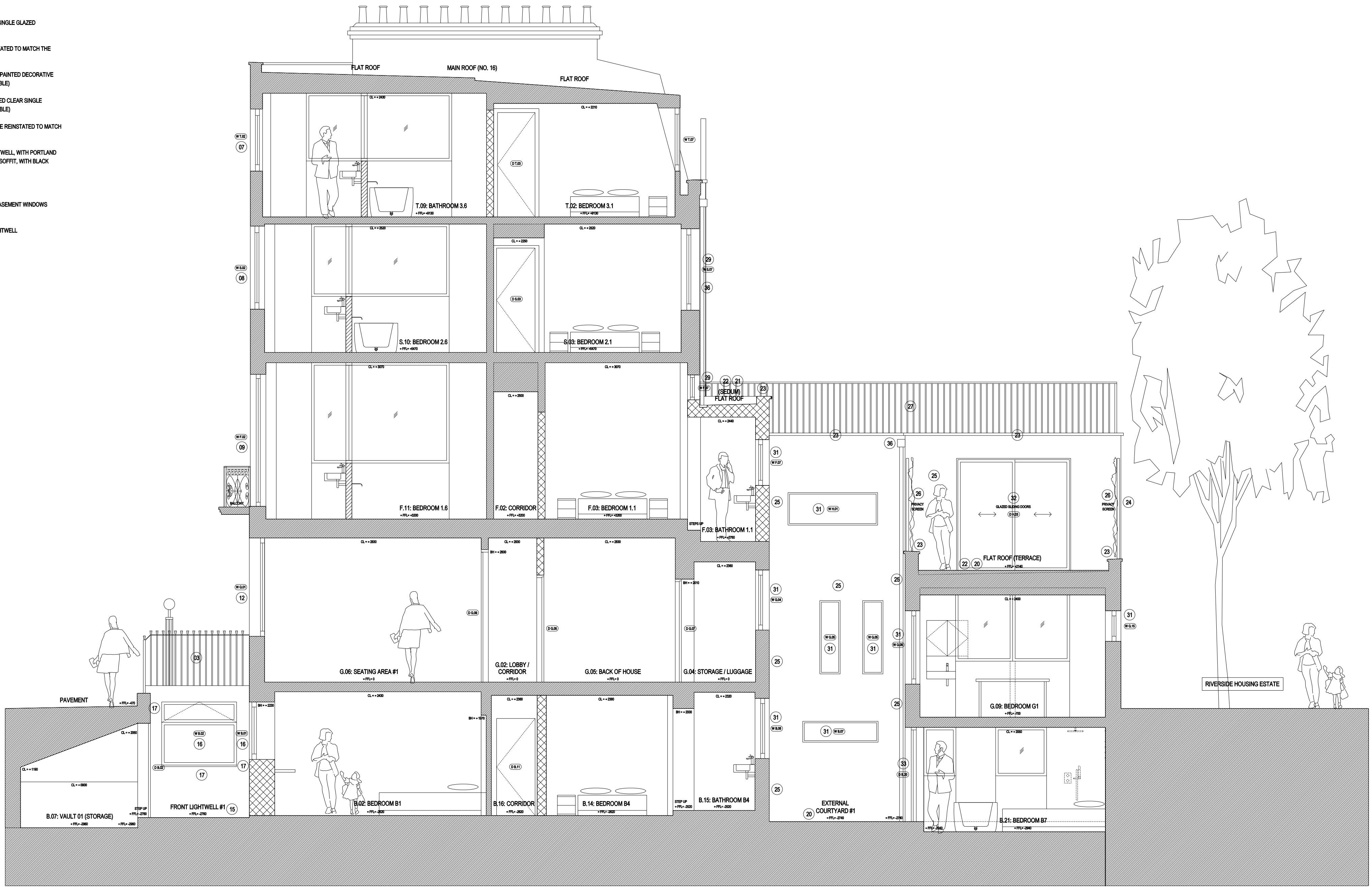
FRONT WORKS:

- 01 PORTLAND STONE TREADS AND RISERS FORMING ENTRANCE STEPS
- 02 MOSAIC FLOOR TILING
- 03 EXISTING METAL RAILINGS AND GATES TO BE PAINTED BLACK
- 04 NEW BLACK PAINTED MILD STEEL ARCH WITH ILLUMINATED LANTERN CENTRED TO TOP OF ARCH TO DENOTE ENTRANCE STEPS FROM STREET
- 05 BLACK PAINTED HARDWOOD 6-PANEL MOULDED SOLID TRADITIONALLY DETAILED DOOR WITH BRONZE IRONMONGERY AND CLEAR SINGLE GLAZED ARCHED FANLIGHT ABOVE
- 06 BLACK PAINTED HARDWOOD 6-PANEL MOULDED SOLID TRADITIONALLY DETAILED DOUBLE DOORS WITH BRONZE IRONMONGERY AND CLEAR SINGLE GLAZED ARCHED FANLIGHT ABOVE (WITH 17" FILM LETTERING)
- 07 WHITE PAINTED HARDWOOD 3-OVER-3 TRADITIONALLY DETAILED CLEAR SINGLE GLAZED SLIDING SASH WINDOW (BOTTOM PANE FIXED / TOP PANE OPENABLE), WITH EXTERNAL WINDOW REVEAL TO BE WHITE PAINTED RENDERED
- 08 WHITE PAINTED HARDWOOD 6-OVER-6 TRADITIONALLY DETAILED CLEAR SINGLE GLAZED SLIDING SASH WINDOW (BOTTOM PANE FIXED / TOP PANE OPENABLE), WITH EXTERNAL WINDOW REVEAL TO BE WHITE PAINTED RENDERED
- 09 WHITE PAINTED HARDWOOD 9-OVER-9 TRADITIONALLY DETAILED CLEAR SINGLE GLAZED SLIDING SASH WINDOW (BOTTOM PANE FIXED / TOP PANE OPENABLE)
- 10 DECORATIVE EXTERNAL WINDOW ARCHITRAVE / MOULDING TO BE REINSTATED TO MATCH THE EXISTING ADJACENT
- 11 REINSTATE WHITE PAINTED RENDERED CONCRETE BALCONY AND BLACK PAINTED DECORATIVE MILD STEEL RAILINGS TO MATCH THE EXISTING ADJACENT (NON-ACCESSIBLE)
- 12 WHITE PAINTED HARDWOOD 15-OVER-10 ARCHED TRADITIONALLY DETAILED CLEAR SINGLE GLAZED SLIDING SASH WINDOW (BOTTOM PANE FIXED / TOP PANE OPENABLE)
- 13 DECORATIVE EXTERNAL ARCHED WINDOW ARCHITRAVE / MOULDING TO BE REINSTATED TO MATCH THE EXISTING ADJACENT
- 14 REINSTATE CONCRETE STAIRCASE FROM STREET DOWN TO FRONT LIGHTWELL, WITH PORTLAND STONE TREADS AND RISERS AND WHITE PAINTED RENDERED WAIST AND SOFFIT, WITH BLACK PAINTED MILD STEEL HANDRAIL AND BALUSTRADING
- 15 PORTLAND STONE TO FRONT LIGHTWELL FLOOR EXTERNALLY
- 16 WHITE PAINTED HARDWOOD FIXED / OPENABLE CLEAR SINGLE GLAZED CASEMENT WINDOWS TO FRONT LIGHTWELL (LOWER GROUND FLOOR LEVEL)
- 17 PAINT WHITE EXISTING WHITE PAINTED RENDERED WALLS TO FRONT LIGHTWELL

KEY / DESCRIPTION OF FIT-OUT WORKS:

REAR WORKS:

- 20 PORTLAND STONE PAVING TO FLAT ROOF TERRACE AND REAR LIGHTWELL
- 21 EXTENSIVE TYPE (NO MAINTENANCE REQUIRED) SEDUM ROOF
- 22 GRP WATERPROOFED FLAT ROOFING SYSTEM WITH BOX GUTTERS AND RWO TO HOPPER / RWP UNDER PORTLAND STONE AND SEDUM ROOF FINISHES
- 23 GREY STONE COPING STONES TO FLAT ROOF PARAPET WALLS
- 24 LONDON OLD STOCK BRICK WORK TO MATCH EXISTING
- 25 WHITE PAINTED RENDER TO EXISTING BRICKWORK AND NEW INSULATED BLOCKWORK EXTERNAL WALLS
- 26 HARDWOOD SLATTED TIMBER PRIVACY SCREENS AND PLANTING
- 27 EXISTING METAL RAILINGS AND HANDRAIL TO BE PAINTED BLACK
- 28 WHITE PAINTED HARDWOOD 6-OVER-6 AND 9-OVER-9 TRADITIONALLY DETAILED CLEAR DOUBLE GLAZED SLIDING SASH WINDOWS (BOTTOM PANE FIXED / TOP PANE OPENABLE), WITH EXTERNAL WINDOW REVEAL TO BE WHITE PAINTED RENDERED
- 29 WHITE PAINTED HARDWOOD TRADITIONALLY DETAILED CLEAR DOUBLE GLAZED SIDE HUNG WINDOWS, WITH EXTERNAL WINDOWS REVEAL TO BE WHITE PAINTED RENDERED
- 30 LIGHT GREY POLYESTER POWDER COATED ALUMINIUM FRAMED CLEAR DOUBLE GLAZED FIXED / OPENABLE CASEMENT WINDOWS
- 31 LIGHT GREY POLYESTER POWDER COATED ALUMINIUM FRAMED CLEAR DOUBLE GLAZED SLIDING EXTERNAL DOORS
- 32 LIGHT GREY POLYESTER POWDER COATED ALUMINIUM FRAMED CLEAR DOUBLE GLAZED FRENCH EXTERNAL DOORS
- 33 LIGHT GREY POLYESTER POWDER COATED ALUMINIUM FRAMED FIXED CLEAR DOUBLE GLAZED ROOFLIGHT
- 34 LIGHT GREY POLYESTER POWDER COATED ALUMINIUM FRAMED CLEAR DOUBLE GLAZED CANTILEVERED WALKWAY (GLAZED WALLS & ROOF) WITH SOLID TIMBER / RENDERED FLOOR STRUCTURE
- 35 BLACK PAINTED (WHEN AGAINST BRICKWORK) AND WHITE PAINTED (WHEN AGAINST WHITE PAINTED RENDER) TIMESAVER ALUMINIUM TRADITIONAL STYLE HOPPER / RWP / SVP



06 PROPOSED SECTION 06 (15-12-06)
Scale 1:50 (@A1 SIZE)

31.10.15 ISSUE FOR PLANNING & LISTED BUILDING CONSENT
rev date reason by



Unit 6: Masons Yard
177 Westbourne Street t: +44 (0) 1273 201 830
Hove e: steve@searyarchitects.co.uk
East Sussex BN3 5FB w: www.searyarchitects.co.uk

project: Montana Hotel: 16-18 Argyle Square, Kings Cross, London, WC1H 8AS
client: The St. Pancras Hotel Group
dwg title: Proposed Section 06
dwg no: 15-12-06 rev: 1
scale: 1:50 (@A1 SIZE) date: 31.10.15
project no: 1814 status: PLANNING & LBC

all dimensions must be checked on site and not scaled from this drawing
© copyright seary architects

0 1 2 3 4 5 6 7 8 9 10
SCALE BAR (METRES) - (1:50 SCALE @ A1 SIZE)