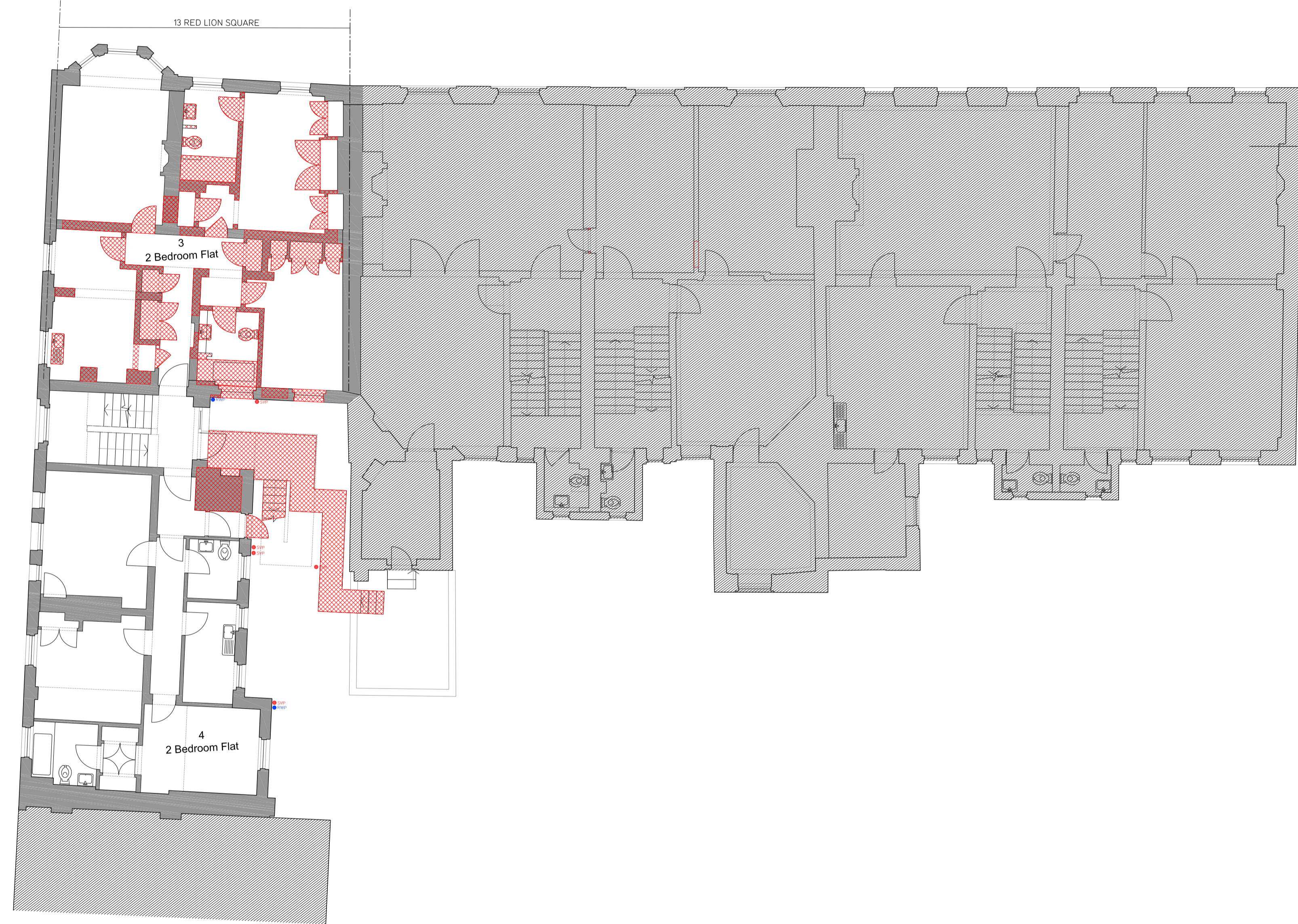


ALL DIMENSIONS, SETTING-OUT INFORMATION AND LEVELS MUST BE CHECKED ON SITE BEFORE ANY MATERIALS ARE ORDERED OR WORK COMMENCES ON SITE. COPYRIGHT HWO LTD.

NOTES

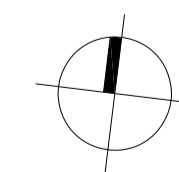
KEY:

 To be demolished



SEE SEPARATE APPLICATION

1 Existing First Floor
052 SCALE 1:100



Revisions No	By	Date	By
A	General Revision	21-Dec-2015	CM

Client
13-17 Red Lion Square LLP

Stage
Planning

 HWO Architects
407-8 ScreenWorks
22 Highbury Grove
London N5 2ER
T +44 (0)20 7566 0006
E info@hwo-architects.com

Job title
**13 Red Lion Square
London, WC1R 4QH**

Drawing title
**Demolition Plans
First Floor**

Created by	Checked by	Scale	Date
IA	NK	1:100@ A1	02-NOV-2015

Job	Stage	Drawing	Revision
432	- S2 -	052	A