

General Notes:

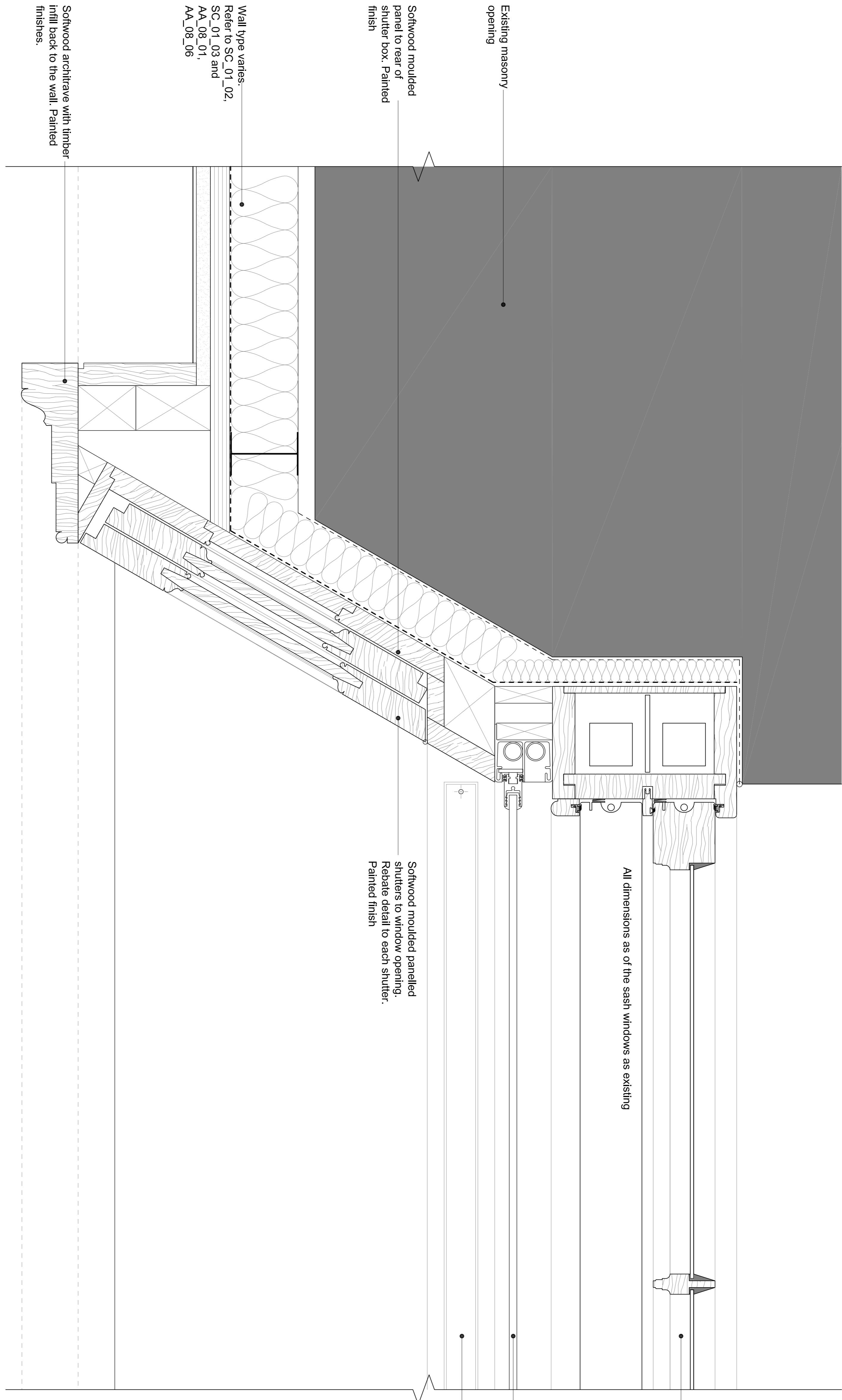
1. No dimensions are to be scaled from this drawing.
2. All dimensions are to be reported to Architect immediately.
3. All dimensions are to be checked on site prior to fabrication & construction.
4. This drawing is for design purposes only. Detail & fabrication design to be supplied by contractor. Refer to design portion & specification.

All wooden parts of the sash window are painted hardwood

Refer to window schedule and specification for extent of existing sash window renovations. Sash window details drawn to show the typical window profiles to be replicated on replacement window elements.

Existing windows upgraded and refurbished. Paint finish. Refer to schedule, details and specification

Selectaglaze secondary glazing unit. White finish with white rubber seals
 Motorised blind box recessed into cill/floor



01 Secondary Glazing Detail - Plan
 6.68 Ground and 1st Floor

Revision	Date	Comment
-	15/12/15	For Planning

MMM architects Ltd

The Bankers Hall, 24 Meade Vale, London, W9 1RS
 E post@mmarchitects.com, www.mmarchitects.com

Planning

address: 41-42 CHESTER TERRACE
 job no.: 421
 title: PROPOSED SECONDARY GLAZING WINDOW DETAILS
 scale: 1:20@A1
 dwg no.: AA_6_68
 revision: 1