

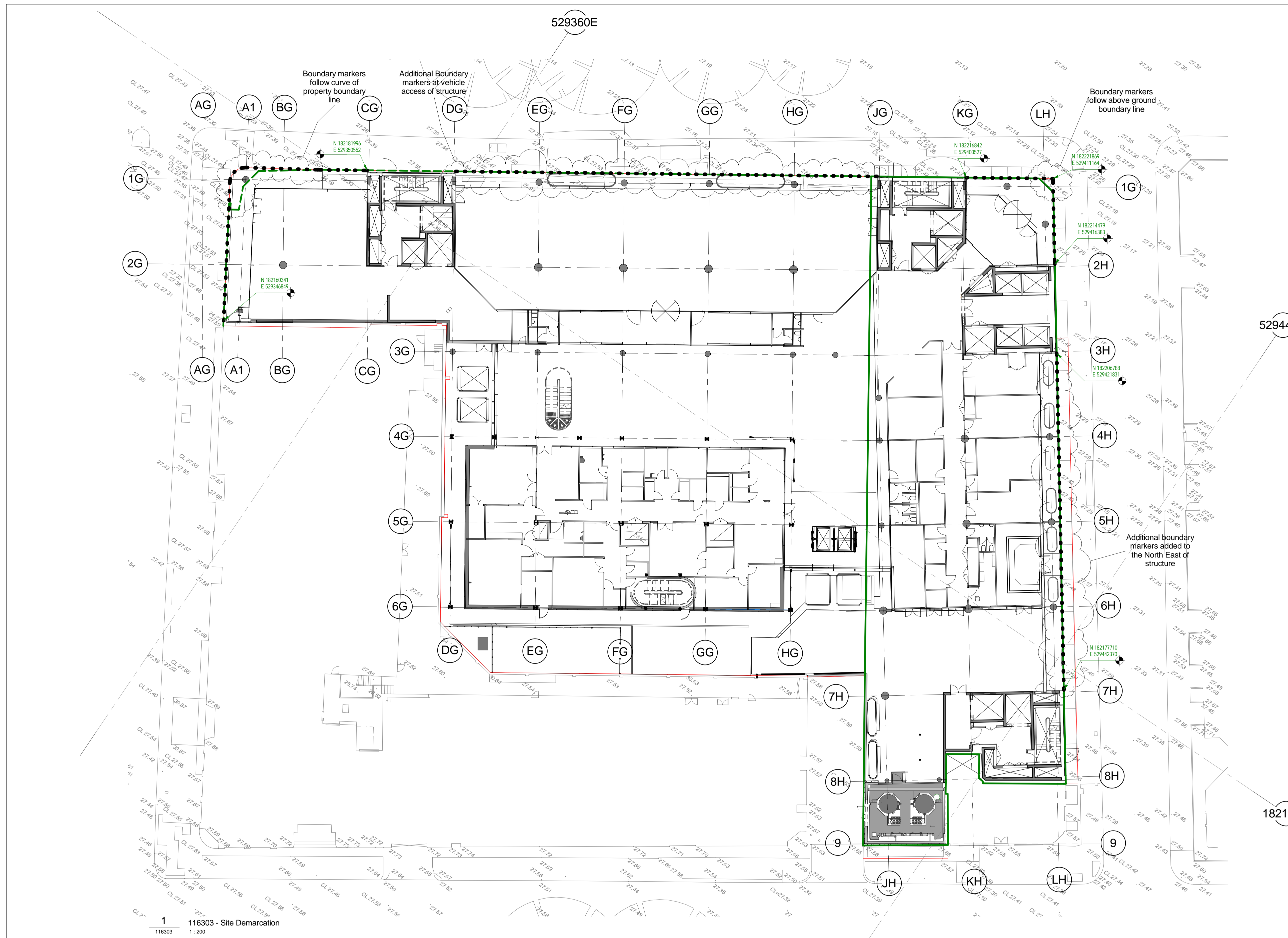
- extent of the boundary markers
- legal site boundary of the development - above ground
- outline of the Rosemheim building (now demolished) shown green
- - - line of existing hoarding shown green dashed

NOTE:

Red line denotes the legal site boundary of the development at ground floor level as advised by UCLH legal advisors.

The outline of the former Rosemheim building and the line of existing Odeon site hoarding will be denoted by boundary markers where the building line does not meet at ground level (ie setbacks, entrances etc)

These markers are in the form of stainless steel studs of minimum 25mm diameter, set into surface, and at spacing of no more than 2m apart or as agreed by LBC



1
116303 - Site Demarcation
1:200

FOR PLANNING

NOTES:

Rev	DATE	REVISION HISTORY	Dsg	Drw	Chk	App
D	2016.01.08	Coordinates added along Huntley Street	STW	STW	STW	STW
C	2015.12.15	Issued for Planning - Condition 14 discharge	STW	STW	STW	STW
B	2015.12.10	For Information	STW	STW	BYJK	BYJK
A	2015.12.09	For Information	STW	STW	BYJK	BYJK

ALL REVISIONS

Rev	DATE	REVISION HISTORY	Dsg	Drw	Chk	App
D	2016.01.08	Coordinates added along Huntley Street	STW	STW	STW	STW
C	2015.12.15	Issued for Planning - Condition 14 discharge	STW	STW	STW	STW
B	2015.12.10	For Information	STW	STW	BYJK	BYJK
A	2015.12.09	For Information	STW	STW	BYJK	BYJK



BOUYGUES

Head Office:
Elizabeth House,
39 York Road,
London, SE1 7NG,
Tel: 020 7401 0020
Fax: 020 7401 0030
www.bouygues-uk.com

University College London Hospitals **NHS**
NHS Foundation Trust

Name	Signature	Date
Designed by	STW	
Drawn by	JT	
Checked by	SC	
Approved	Approver	

ORIGINATOR
Scott Tallon Walker Architects

NG Bailey CampbellReith

ccrd Particle Therapy

VARIAN medical systems

SCALE: 1:200 @ A1

FIRST ISSUE DATE: 10/12/2015

PROPOSED STATUS: S2 - FOR INFORMATION

BIM FILE NAME: P4PBT-STW-ABG-SL-M3-A31-100030

DRAWING TITLE

Proton Beam Therapy - Phase 4

Site Demarcation

PROJECT	ISSUER	AREA	LEVEL	TYPE	TRADE	SEQUENCE	REV
P4PBT	STW	ALL	SL	GA	A31	116303	D