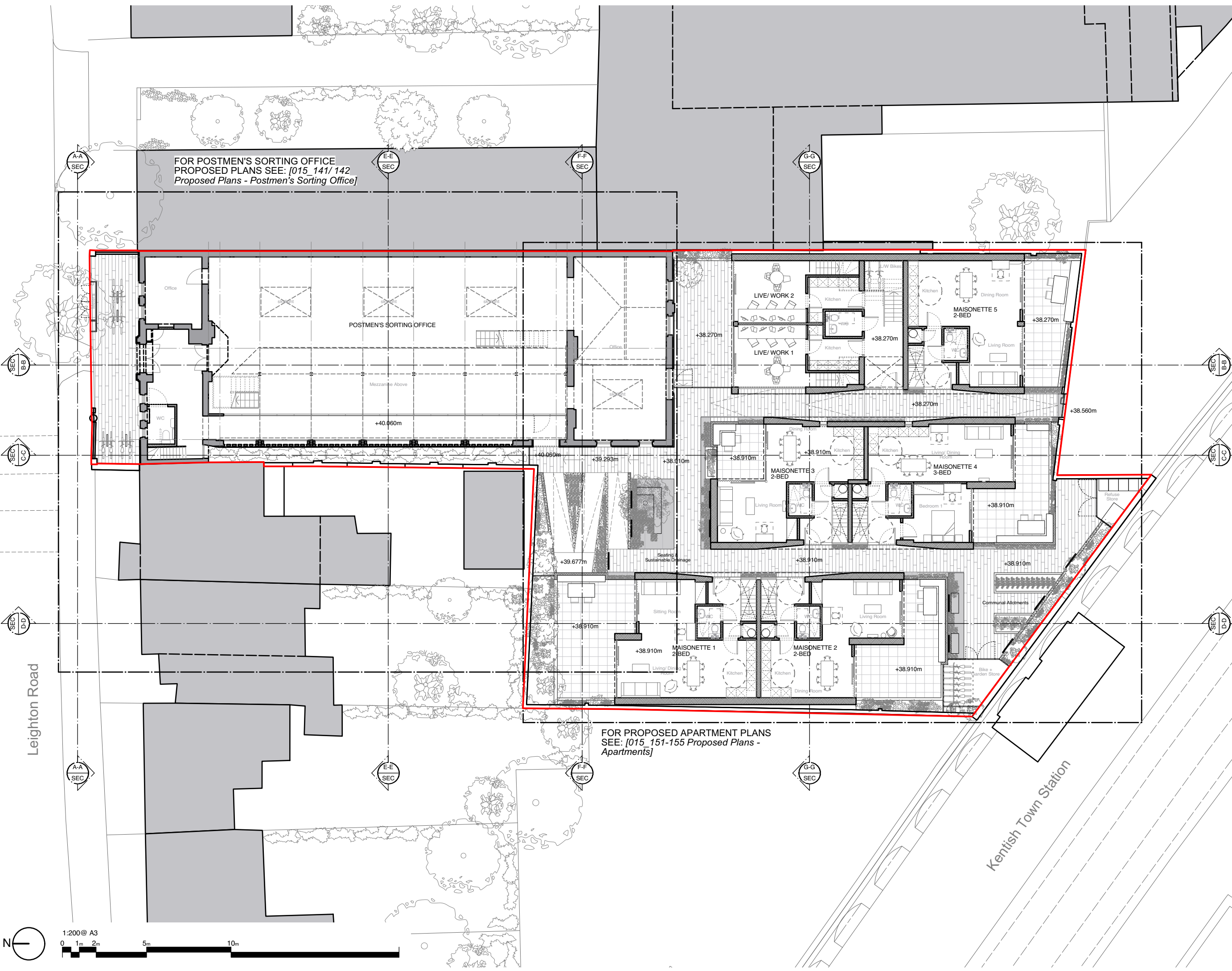


DO NOT SCALE OFF THIS DRAWING
 ALL AMBIGUITIES OR DISCREPANCIES
 TO BE REPORTED TO ARCHITECT
 BEFORE COMMENCING

Notes

FOR POSTMEN'S SORTING OFFICE
 PROPOSED PLANS SEE: [015_141/142
 Proposed Plans - Postmen's Sorting Office]

FOR PROPOSED APARTMENT PLANS
 SEE: [015_151-155 Proposed Plans -
 Apartments]



Revisions		
Date:	Rev:	Details:
24/08/15	A	Site boundary line revised.
14/12/15	B	Mezzanine and stairs in Postmen's Office updated further to conservation officer's comments. Refuse store and cycle storage details amended.

STUDIO MACKERETH
 ARCHITECTS
 7B ST PANCRAS WAY
 LONDON
 NW1 0PB
 TELEPHONE + 4 4 (0)20 7042 8335
 EMAIL: INFO@STUDIOMACKERETH.COM

Project
 30 Leighton Road

Drawing Title
 Proposed Site Plan

Scale	Creation Date	Status
1:200 @ A3	April 2015	Plan

Project No.	Drawing No.	Revision
015	110	B

