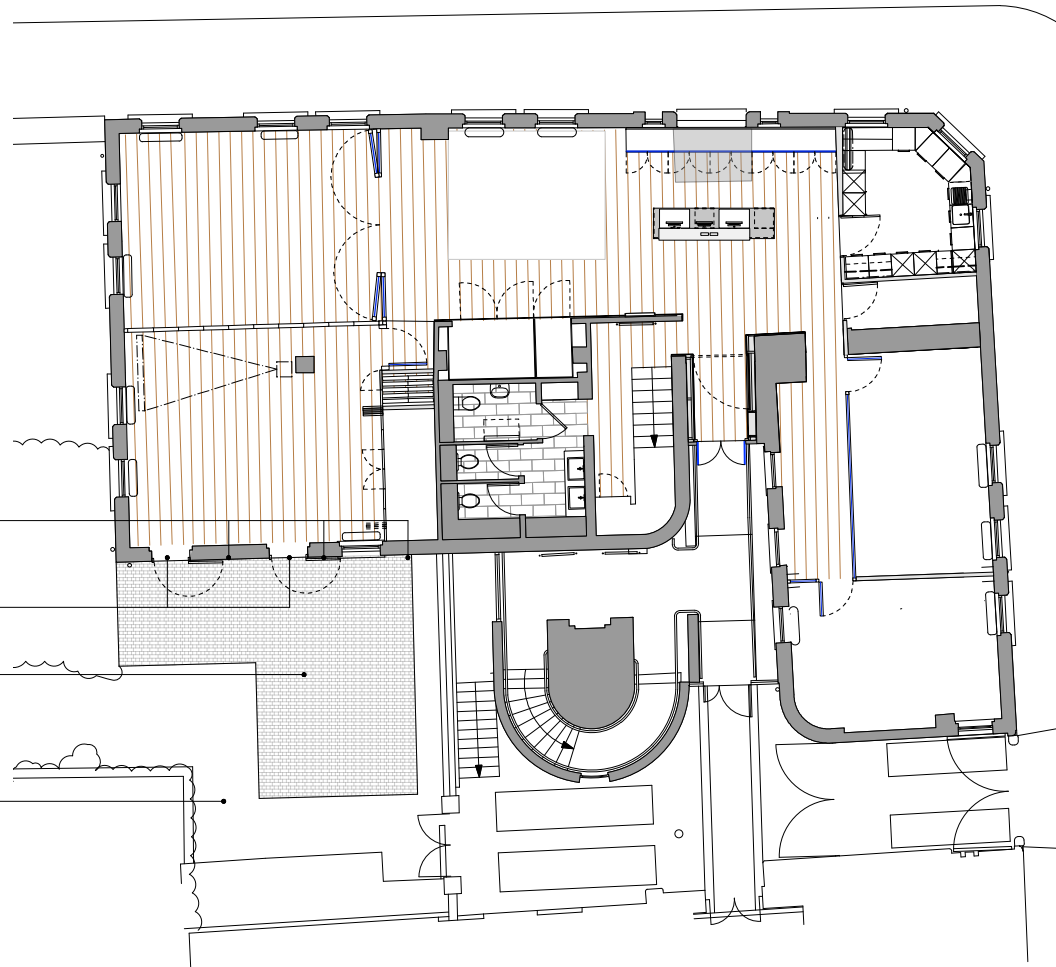


X3 WALL MOUNTED LIGHTS  
AT HIGH LEVEL. REFER TO  
ELEVATIONS

REMOVE EXISTING WINDOWS  
CREATE FULL HEIGHT DOOR  
OPENINGS AND MAKE GOOD  
IN PREPARATION FOR NEW  
180 DEGREE TERRACE DOORS

REMOVE EXISTING GREENERY  
AND BORDERS AND PREPARE  
SURFACE FOR NEW PAVING  
INSTALL FORMATION AND NEW  
CONCRETE PAVERS.

RETAIN EXISTING PATH



PROPOSED PLAN



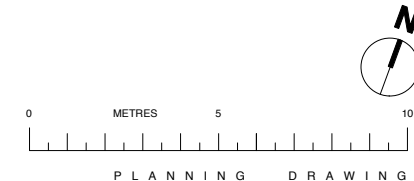
RETAIN  
EXISTING  
BRICK ARCH

FIXED  
FANLIGHT

FORM X2 NEW DOOR  
OPENINGS WITHIN  
EXISTING WINDOW  
POSITIONS FOR  
NEW DOUBLE GLAZED  
WHITE TIMBER DOORS  
TO NEW TERRACE

NEW WALL  
LIGHTS

PROPOSED SOUTH ELEVATION



PLANNING DRAWING

**GENERAL NOTES**

- THIS DRAWING AND THE DETAILS CONTAINED THEREIN ARE COPYRIGHT AND ARE NOT TO BE REPRODUCED WITHOUT THE PERMISSION OF BLUEBOTTLE.
- ALL DIMENSIONS RELATING TO ACTUAL SITE CONDITIONS ARE TO BE CHECKED ON SITE PRIOR TO ANY WORKS BEING COMMISSIONED OR EXECUTED.
- USE FIGURED DIMENSIONS AND LEVELS ONLY. ALL DIMENSIONS ARE IN MM AND LEVELS ARE IN METER IF NOT OTHERWISE STATED.
- THE AREAS ON THE DRAWING HAVE BEEN MEASURED FROM THE CAD DRAWING AND NO TOLERANCES ARE ADDED OR SUBTRACTED.
- ACCURATE SITE SURVEY FOR SITE LEVELS, DIMENSIONS AND AREAS NEEDS TO BE FULLY EVALUATED.
- CONTRACTORS ARE NOT TO SCALE FROM THIS DRAWING AND SHOULD REFER ANY QUERY IN RESPECT OF DIMENSIONS TO THE DESIGNERS.
- THIS DRAWING IS TO BE READ IN CONJUNCTION WITH ALL MECHANICAL, ELECTRICAL AND STRUCTURAL ENGINEERS LAYOUT, AS WELL AS EMPLOYERS AGENTS INFORMATION AND ASSOCIATED BLUEBOTTLE DRAWINGS AND DOCUMENTS.
- ALL SERVICES LAYOUT SHOWN ON THIS DRAWING IS FOR COORDINATION PURPOSES ONLY. REFER TO SERVICES ENGINEERS DRAWINGS FOR DETAILED LAYOUT AND SPECIFICATIONS.

REVISIONS	REVISION NOTES
T1	ADD NOTE

REVISION DATE	REVISION BY	CLIENT
060116	CF	MATRIX CHAMBERS

JOB NO.	DATE
203-MC	06-01-16

PROJECT	SCALE	DRAWN BY
GRIFFIN BUILDING	1:100@A1	CF

DRAWING DESCRIPTION	DRAWING NO.	REVISION
PROPOSED GROUND PLAN AND ELEVATION	MC-002	T1

**BLUEBOTTLE**

ARCHITECTURE & DESIGN  
 First Floor, 13-14 Dean Street, London W1D 3RS  
 T+44(0)2074371017  
 bluebottle.co.uk mail@bluebottle.co.uk