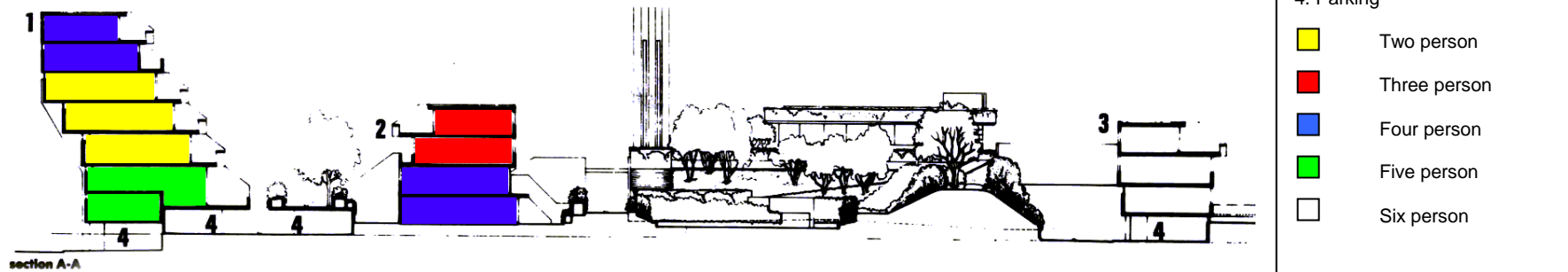


1C HISTORY AND SIGNIFICANCE

05 LAYOUTS OF THE DWELLING TYPES



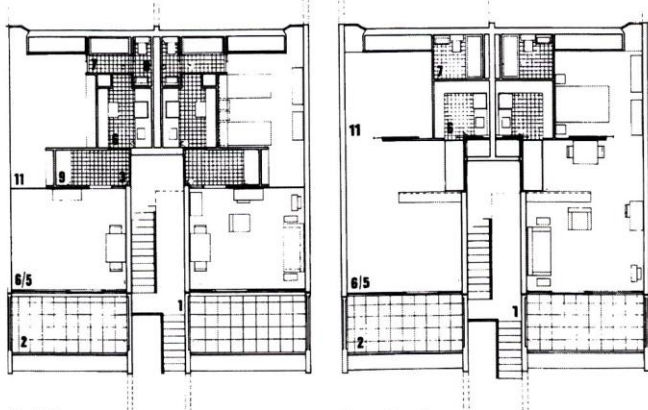
Block A contains two, four and five person dwellings, arranged in a seven story block to the north of the site with parking beneath. The block backs on to the train line and a service road.

Block B contains three and four person dwellings, arranged in a four story block on the south side of Rowley way.

Block C contains six person dwellings on three stories with garages beneath.

The dwellings are generally arranged in pairs with a common access from the street. All of the dwellings have balconies and a view down to the street and or across the children's play area and park. The larger units are on two floors with split levels, and all units are designed to be simple, light and flexible with the use of sliding timber partitions, doors, and fixed glazed screens.

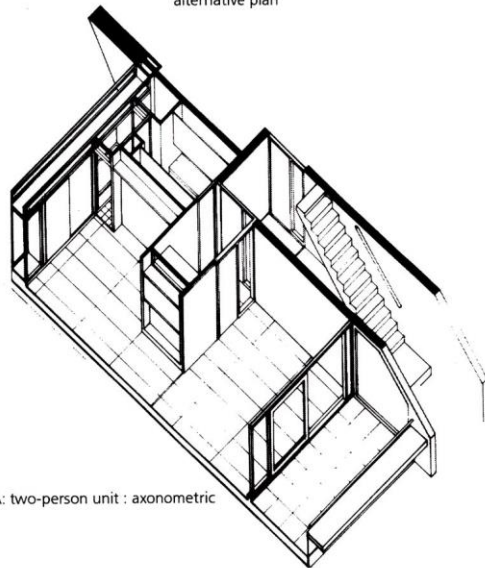
BLOCK A – ONE BEDROOM DWELLING (Type A1)



block A: two-person unit plan

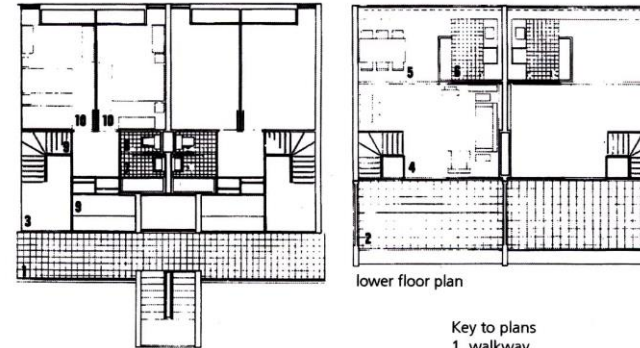
alternative plan

- Key to plans
- 1. walkway
 - 2. terrace
 - 3. entrance
 - 4. living
 - 5. dining
 - 6. kitchen
 - 7. bathroom
 - 8. wc
 - 9. utility store
 - 10. bedroom 2
 - 11. bedroom 1
 - 12. dressing room



block A: two-person unit : axonometric

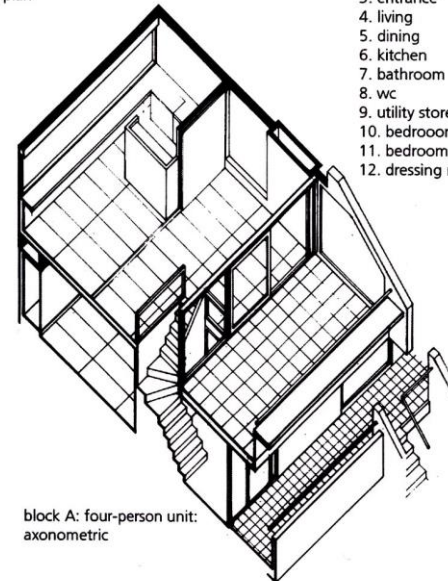
BLOCK A – TWO BEDROOM DWELLING (Type A2)



block A: four person unit upper floor plan

lower floor plan

- Key to plans
- 1. walkway
 - 2. terrace
 - 3. entrance
 - 4. living
 - 5. dining
 - 6. kitchen
 - 7. bathroom
 - 8. wc
 - 9. utility store
 - 10. bedroom 2
 - 11. bedroom 1
 - 12. dressing room

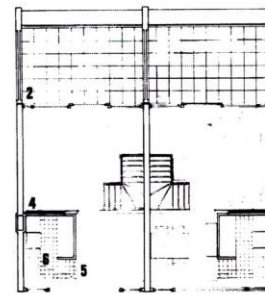


block A: four-person unit: axonometric

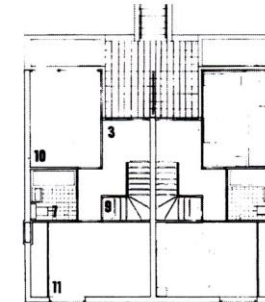
BLOCK A - THREE BEDROOM DWELLING (Type A3)

(unavailable at present)

BLOCK B – TWO BEDROOM DWELLING (Type B2)

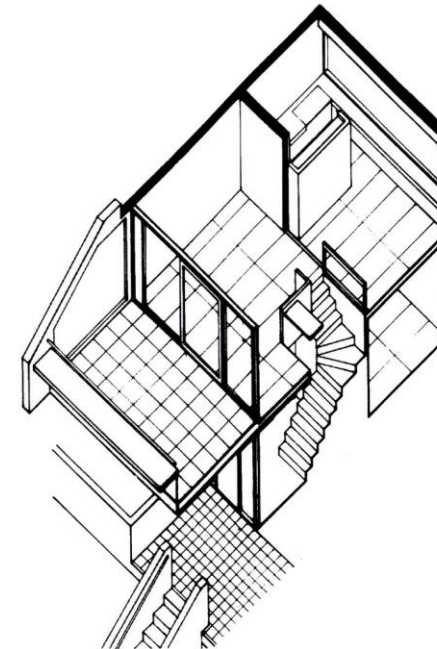


block B: three person unit
upper floor plan



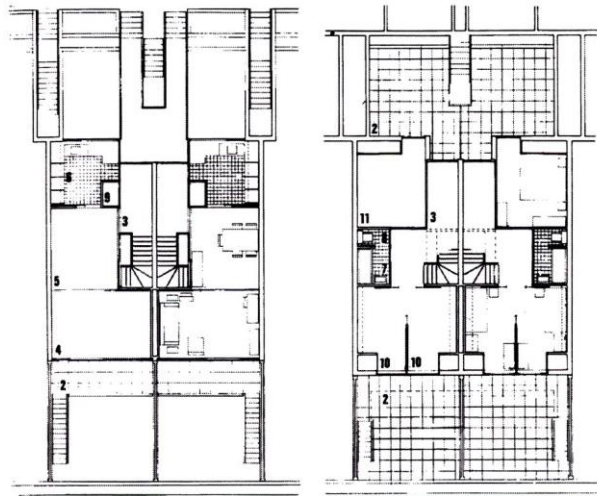
lower floor plan

- Key to plans
- 1. walkway
 - 2. terrace
 - 3. entrance
 - 4. living
 - 5. dining
 - 6. kitchen
 - 7. bathroom
 - 8. wc
 - 9. utility store
 - 10. bedroom 2
 - 11. bedroom 1
 - 12. dressing room



block B:three person unit: axonometric

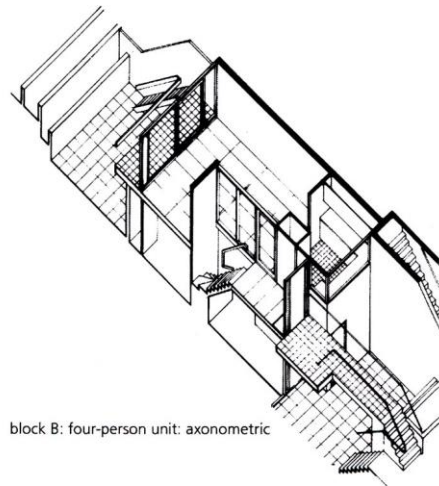
BLOCK B – THREE BEDROOM DWELLING (Type B3)



block B: four person unit
upper floor plan

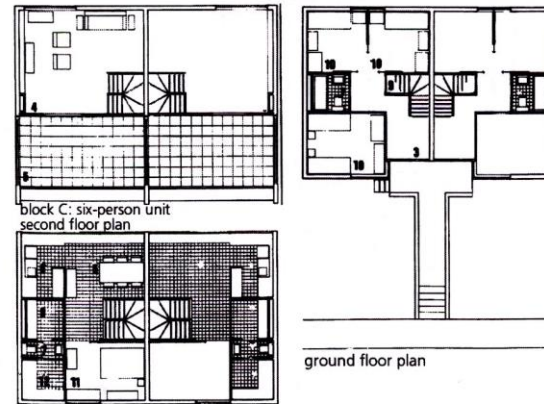
lower floor plan

- Key to plans
1. walkway
 2. terrace
 3. entrance
 4. living
 5. dining
 6. kitchen
 7. bathroom
 8. wc
 9. utility store
 10. bedroom 2
 11. bedroom 1
 12. dressing room



block B: four-person unit: axonometric

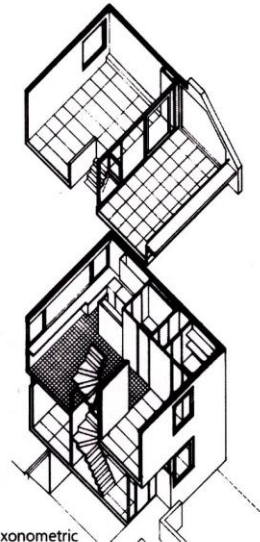
BLOCK C – FOUR BEDROOM DWELLING (Type C4)



first floor plan

ground floor plan

- Key to plans
1. walkway
 2. terrace
 3. entrance
 4. living
 5. dining
 6. kitchen
 7. bathroom
 8. wc
 9. utility store
 10. bedroom 2
 11. bedroom 1
 12. dressing room



block C: six-person unit: axonometric

ORIGINAL LAYOUT FOR THE SIX DWELLING TYPES:

2504_L_101	Existing plan: Flat type A1	1:20	A1	P1
2504_L_102	Existing plan: Flat type A2	1:20	A1	P1
2504_L_103	Existing plan: Flat type A2	1:20	A1	P1
2504_L_104	Existing plan: Flat type A3	1:20	A1	P1
2504_L_105	Existing plan: Flat type A3	1:20	A1	P1
2504_L_106	Existing plan: Flat type B2	1:20	A1	P1
2504_L_107	Existing plan: Flat type B2	1:20	A1	P1
2504_L_108	Existing plan: Flat type B3	1:20	A1	P1
2504_L_109	Existing plan: Flat type B3	1:20	A1	P1
2504_L_110	Existing plan: Flat type C4	1:20	A1	P1
2504_L_111	Existing plan: Flat type C4	1:20	A1	P1
2504_L_112	Existing plan: Flat type C4	1:20	A1	P1