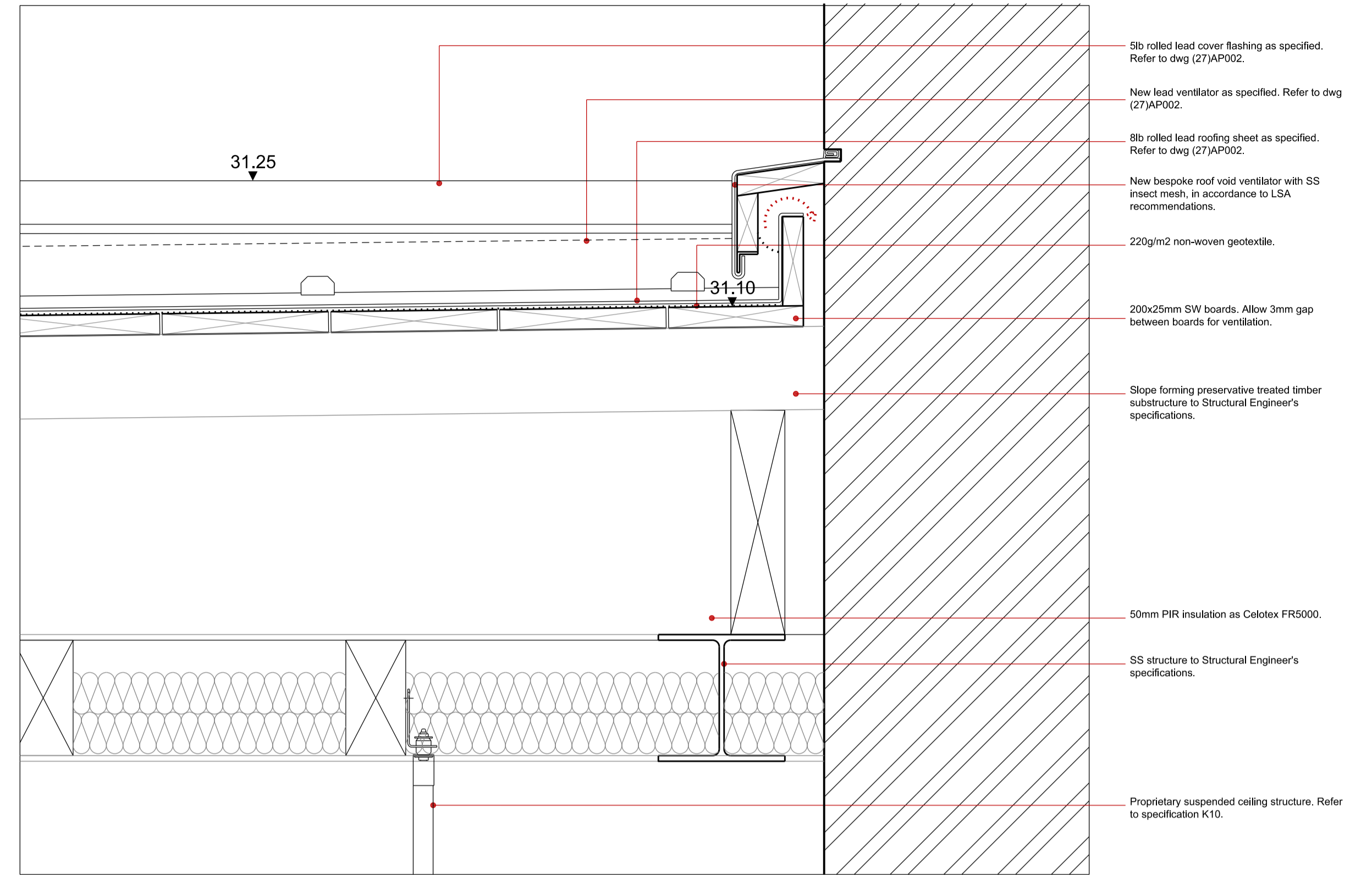


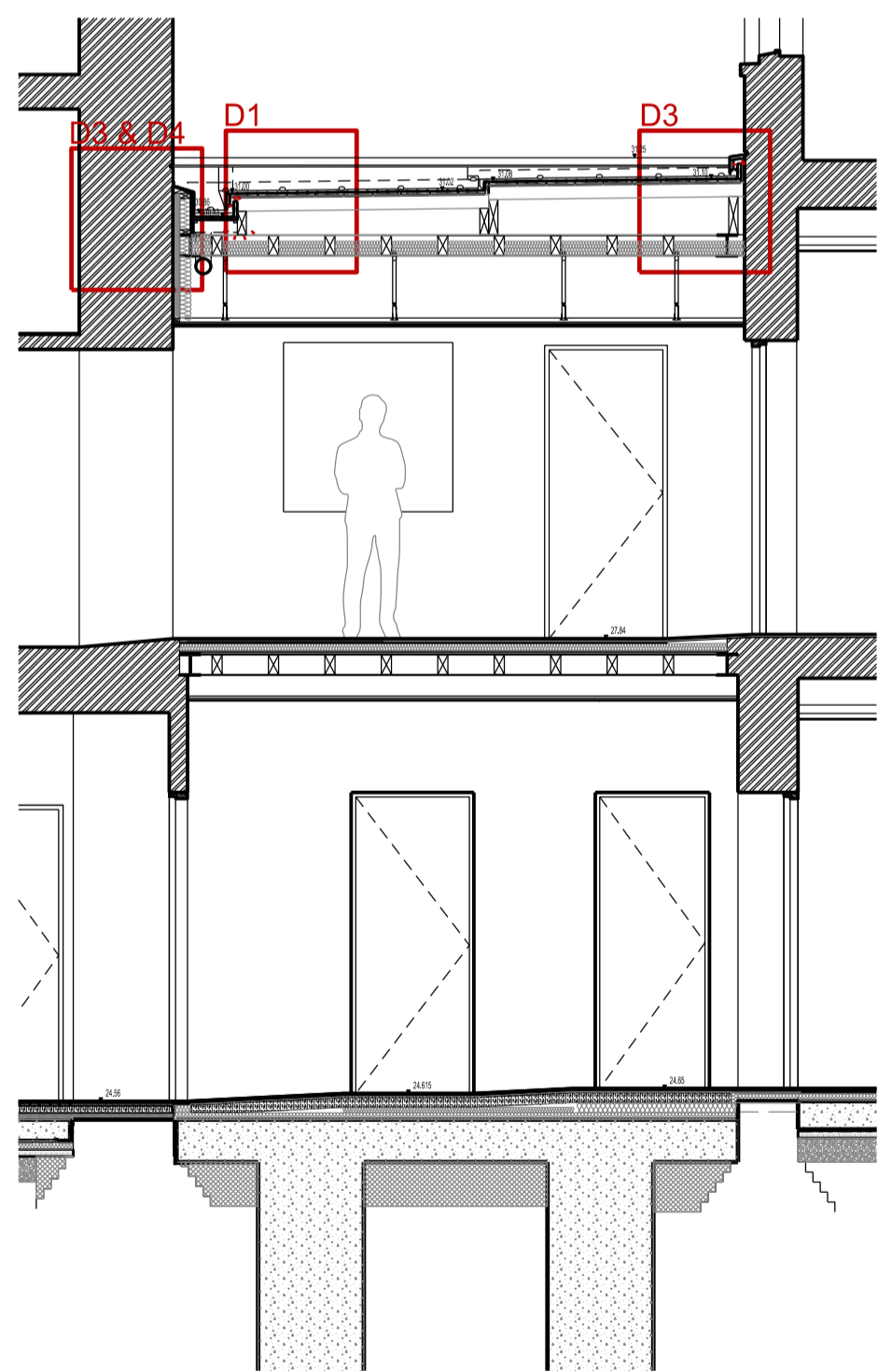
Gutter Detail, Section, D1
Scale 1:5

- 5lb rolled lead cover flashing as specified. Refer to dwg (27)APO02.
- 8lb rolled lead roofing sheet as specified. Refer to dwg (27)APO02.
- 220g/m² non-woven geotextile.
- 200x25mm SW boards. Allow 3mm gap between boards for ventilation.
- New bespoke roof void ventilator with SS insect mesh, in accordance to LSA recommendations.
- Slope forming preservative treated timber substructure to Structural Engineer's specifications.
- 20mm plywood board
- New SW frame fixed to SS structure to Structural Engineer's specifications.
- Primary structure to Structural Engineer's specifications.
- 100mm PIR insulation as Celotex FR5000 between joists.
- 110 diam PVC pipe to gutter outlet. Connection lead-PVC as specified in Fig 186 LSA Complete Manual 2015.
- Proprietary suspended ceiling structure fixed to SS structure. See specification K10

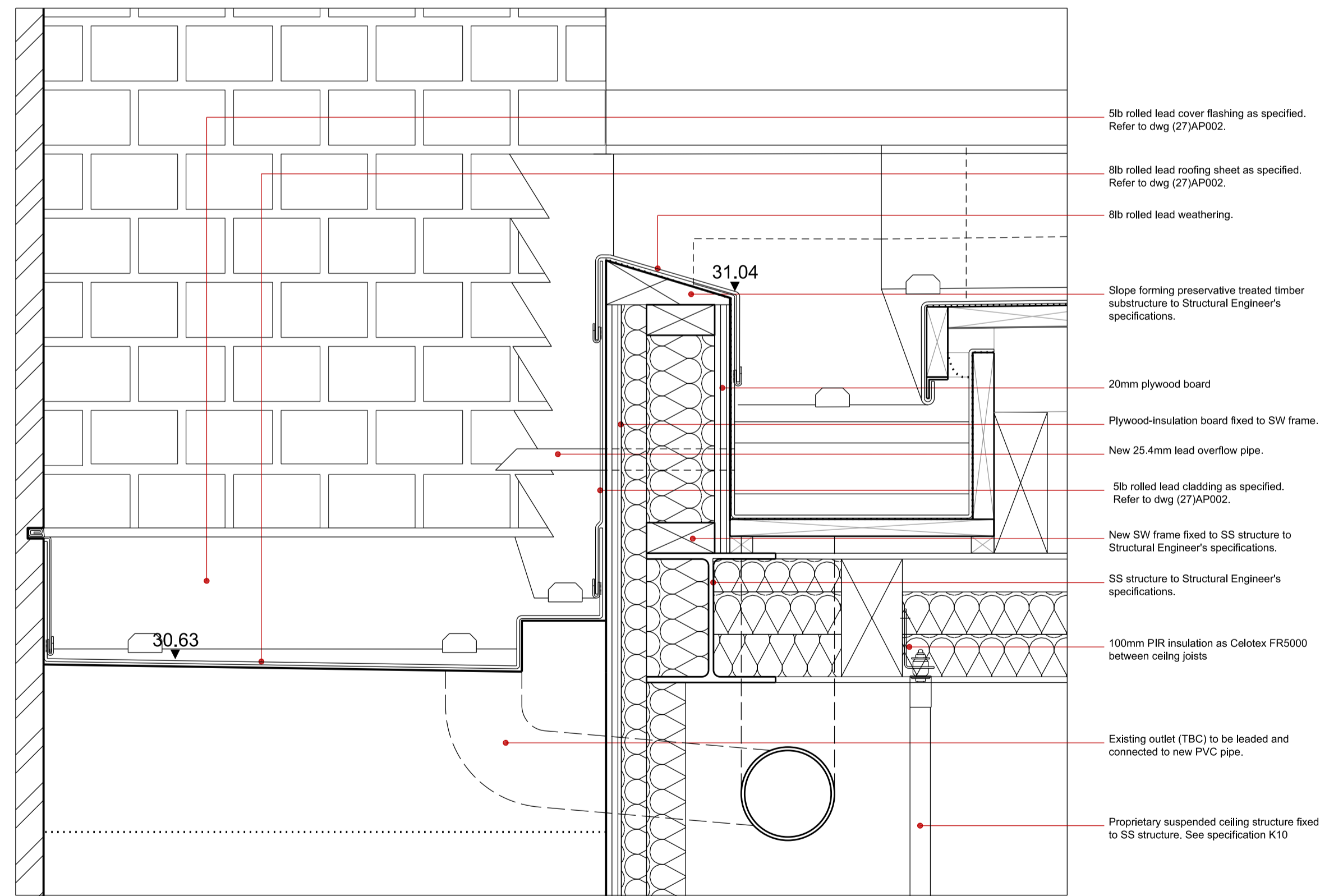


Roof Detail, D2
Scale 1:5

- 5lb rolled lead cover flashing as specified. Refer to dwg (27)APO02.
- New lead ventilator as specified. Refer to dwg (27)APO02.
- 8lb rolled lead roofing sheet as specified. Refer to dwg (27)APO02.
- New bespoke roof void ventilator with SS insect mesh, in accordance to LSA recommendations.
- 220g/m² non-woven geotextile.
- 200x25mm SW boards. Allow 3mm gap between boards for ventilation.
- Slope forming preservative treated timber substructure to Structural Engineer's specifications.
- 50mm PIR insulation as Celotex FR5000.
- SS structure to Structural Engineer's specifications.
- Proprietary suspended ceiling structure. Refer to specification K10.

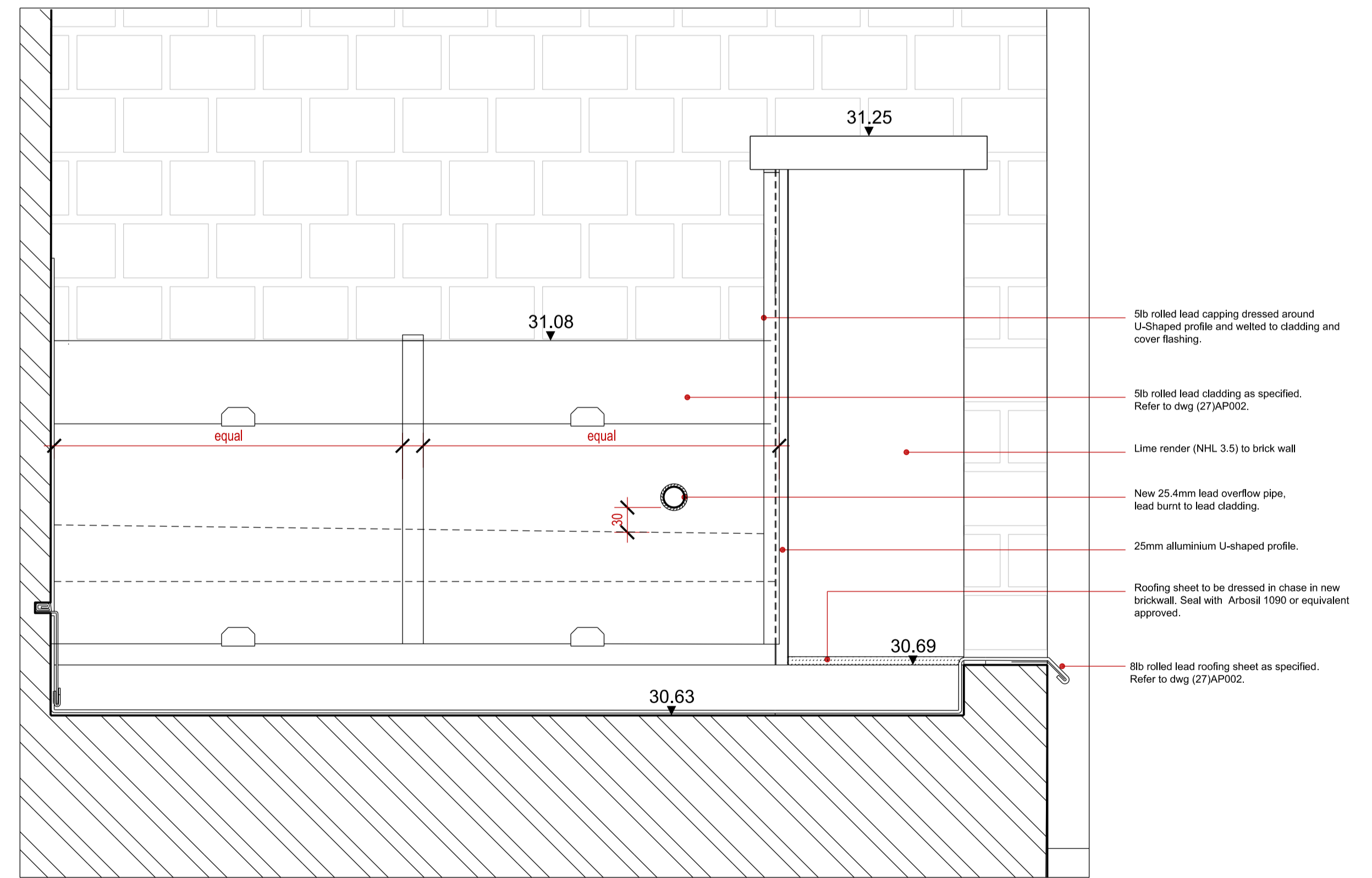


Section BB
Scale 1:50



Gutter Detail, Elevation, D3
Scale 1:5

- 5lb rolled lead cover flashing as specified. Refer to dwg (27)APO02.
- 8lb rolled lead roofing sheet as specified. Refer to dwg (27)APO02.
- 8lb rolled lead weathering.
- Slope forming preservative treated timber substructure to Structural Engineer's specifications.
- 20mm plywood board
- Plywood-insulation board fixed to SW frame.
- New 25.4mm lead overflow pipe.
- 5lb rolled lead cladding as specified. Refer to dwg (27)APO02.
- New SW frame fixed to SS structure to Structural Engineer's specifications.
- SS structure to Structural Engineer's specifications.
- 100mm PIR insulation as Celotex FR5000 between ceiling joists
- Existing outlet (TBC) to be leaded and connected to new PVC pipe.
- Proprietary suspended ceiling structure fixed to SS structure. See specification K10



Parapet Detail, Elevation, D4
Scale 1:5

- 5lb rolled lead capping dressed around U-Shaped profile and welded to cladding and cover flashing.
- 5lb rolled lead cladding as specified. Refer to dwg (27)APO02.
- Lime render (NHL 3.5) to brick wall
- New 25.4mm lead overflow pipe, lead burnt to lead cladding.
- 25mm aluminium U-shaped profile.
- Roofing sheet to be dressed in chase in new brickwall. Seal with Arbolst 1090 or equivalent approved.
- 8lb rolled lead roofing sheet as specified. Refer to dwg (27)APO02.

BUILDING DESIGN PARTNERSHIP LTD SHALL HAVE NO RESPONSIBILITY FOR ANY USE MADE OF THIS DOCUMENT OTHER THAN FOR THAT WHICH IT WAS PREPARED AND ISSUED

ALL DIMENSIONS SHOULD BE CHECKED ON SITE.

DO NOT SCALE FROM THIS DRAWING.

ANY DRAWING ERRORS OR DIVERGENCES SHOULD BE BROUGHT TO THE ATTENTION OF BUILDING DESIGN PARTNERSHIP LTD AT THE ADDRESS SHOWN.

REVISION/DESCRIPTION	DRAWN	CHECKED	DATE	REVISION/DESCRIPTION	DRAWN	CHECKED	DATE	REVISION/DESCRIPTION	DRAWN	CHECKED	DATE	REVISION/DESCRIPTION	DRAWN	CHECKED	DATE	REV. PLAN

- LBC APPLICATION
KS MB 29.10.2015

CLIENT LOGO

16 Brewhouse Yard
Clerkenwell
London, EC1V 4LJ
United Kingdom
T +44 (0)20 7812 8000
F +44 (0)20 7812 8399
www.bdp.com

BDP.

PROJECT TITLE
42 BEDFORD SQUARE

PROJECT NUMBER
P2005698

DRAWING TITLE
LINK BUILDING SECTION BB DETAILS

SCALE @ A1
1:50/1:5

DATE
08.2015

REVISION
LBC 4b_(30)AD002