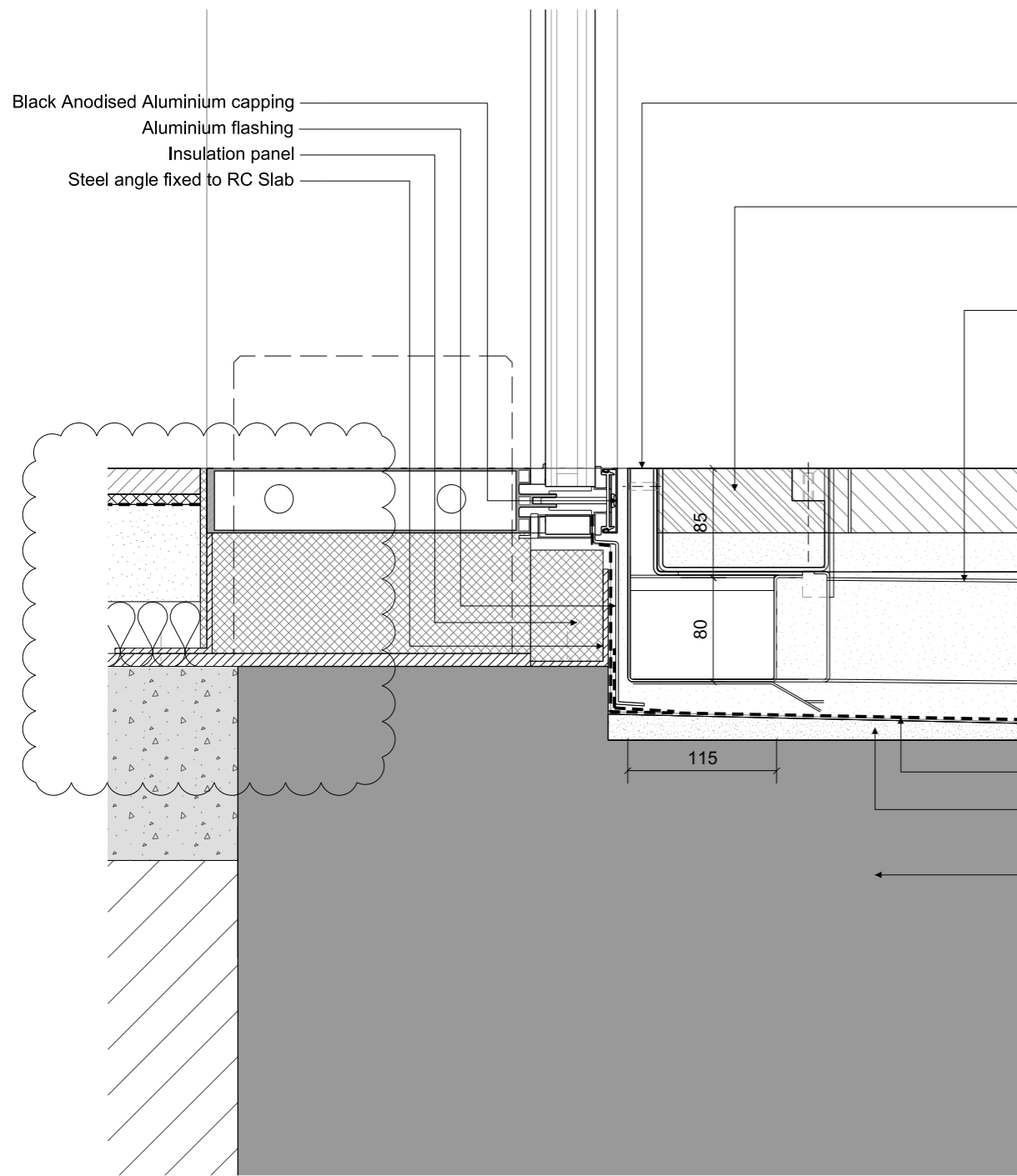
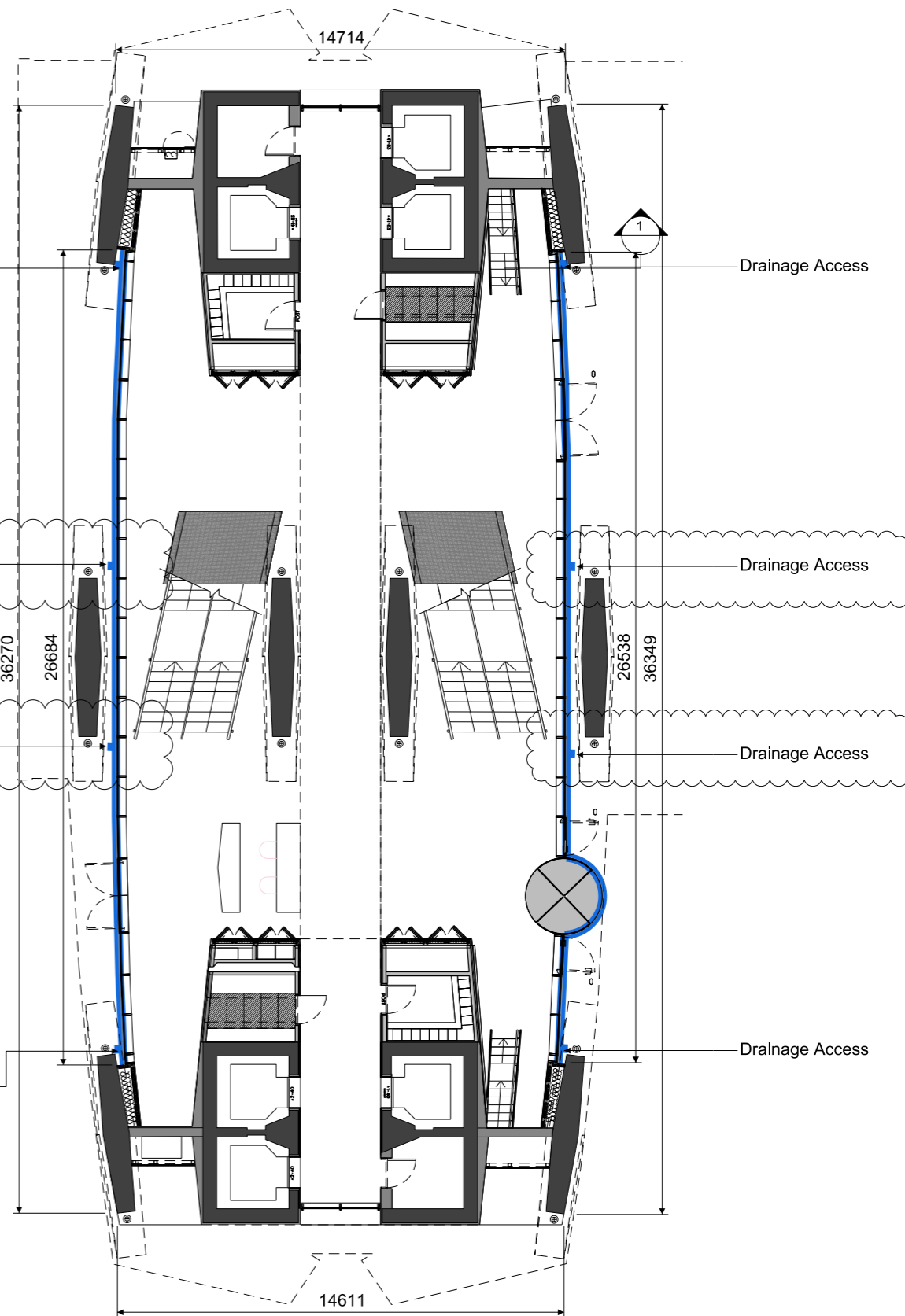


T:\2332 Centre Point\02-Sheets\25 Series External Wall\2332(25)524\_Ground Floor Facade Drainage.dgn  
27/03/2014  
2332  
Conran



① SLOT DRAIN ACCESS DETAIL 1:5

- Drainage Access
- Stainless steel linear slot drainage channel as Q10/170A
- Access cover for linear slot drain - finish to match public realm
- Drainage pipe
- Drainage Access
- Drainage Access
- Reinforced bituminous membrane
- Cementitious fillet with 1in80 falls away from building
- For existing and proposed concrete slabs and upstands refer to Struc. Eng. drawings
- Drainage Access



② GROUND FLOOR DRAINAGE PLAN 1:200

All dimensions must be checked on site and not scaled from this drawing. © Conran and Partners Limited

Rev	Date	Reason	By	Checked	Rev	Date	Reason	By	Checked
-	30.04.13	Stage E	PG	AS					
A	31.03.14	Floor buildup updated, drain access added	NT	AS					

**Notes**

- Extent of slot drainage channel as Q10/170A
- The cladding configuration shown is based on structural dimensions taken from the original design drawings
- Structural dimensions are subject to confirmation by site survey
- For floor build up details refer to drawing series (43) Floor Finishes

Project: Centre Point  
 Client: Almacantar  
 Drawing title: Ground Floor Facade  
 External Drainage  
 Scale 1:5/200 Date: April 2013 Drawn by: PG  
 Project number: 2332 Drawing No: (25) 524 Rev: A  
 Status: STAGE E Checked by: AS

**CONRAN+ PARTNERS**  
 Architects Designers  
 LONDON OFFICE  
 Conran Building  
 22 Shad Thames,  
 London SE1 2YU  
 Telephone +44 (0) 20 7403 8899  
 Email cp@conran.com