

T:\2332 Centre Point\02-Sheets\25 Series External Wall\2332(25)522\_Ground-Mezzanine End Bay Mezzanine Detail.dgn  
29/04/2013  
2332  
Conran

Double glazed unit  
For performance specification of whole glazing assembly refer to Wintech's specification and window schedule

Existing floor finish to be retained

Galv steel fixing with mullion stub connector fixed to RC slab

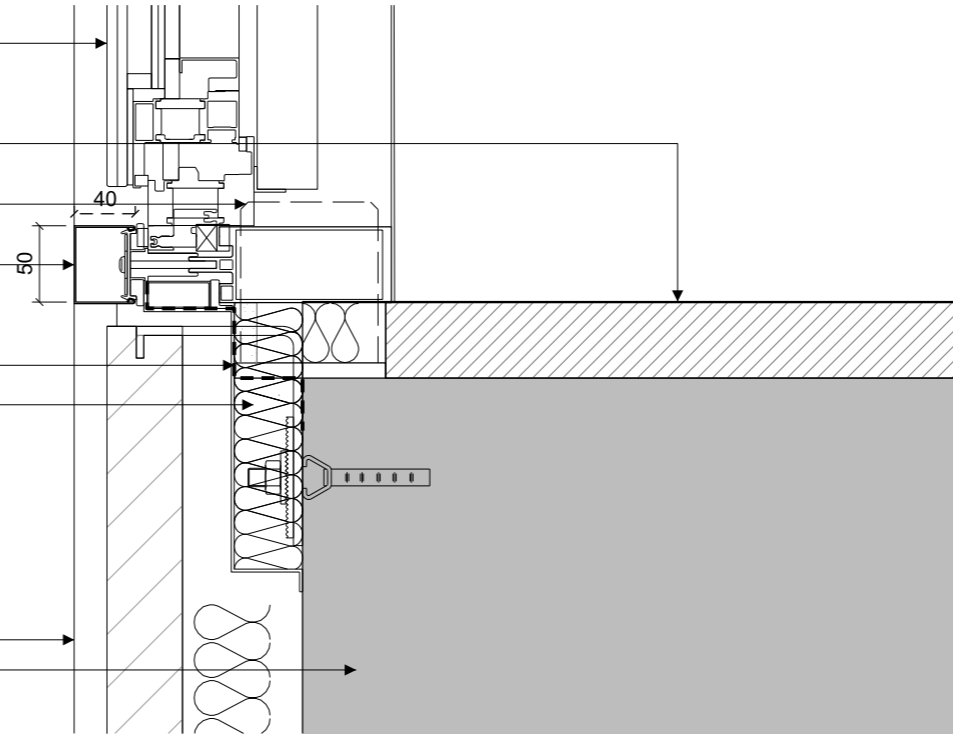
Bespoke Silver anodised cap for consistent alignment of glass and capping with steel below

EPDM by facade contractor bonded to concrete slab

2 hour floor-to-floor fire stopping in black encasement

New granite cladding panel to match existing

Existing precast in-situ concrete floor slab



OUTSIDE

INSIDE

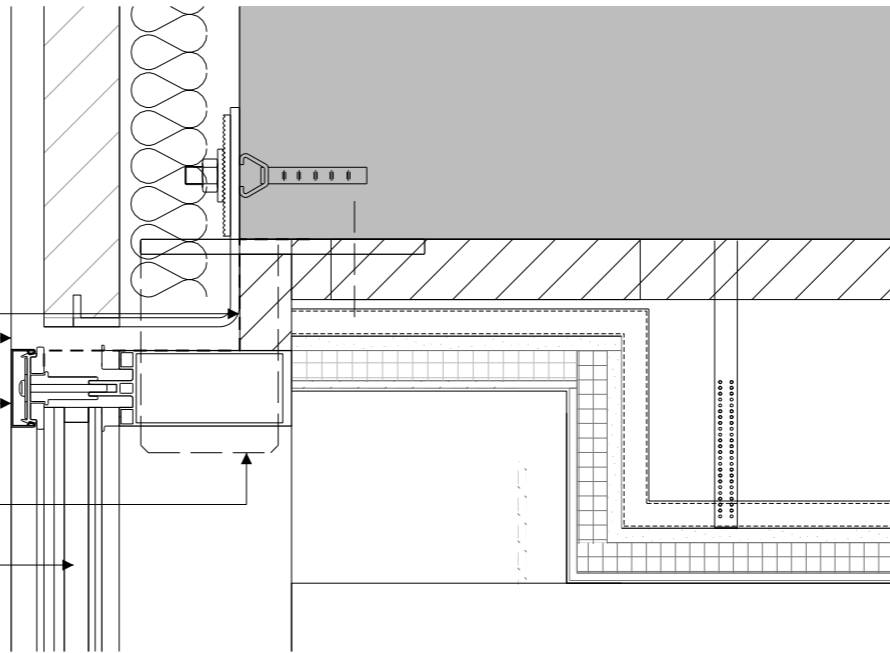
EPDM by facade contractor bonded to concrete

Shadow gap detail between stone panel & window frame maintained

Standard silver anodised aluminium box section transom profile with pressure plate fixing and silver anodised cap

Galv steel fixing with mullion stub connector fixed to RC slab

Double glazed unit  
For performance specification of whole glazing assembly refer to Wintech's specification and window schedule



1 CORE WINDOW GRANITE SPANDREL DETAIL 1:5

All dimensions must be checked on site and not scaled from this drawing. © Conran and Partners Limited

Rev	Date	Reason	By	Checked	Rev	Date	Reason	By	Checked
-	03.08.12	Stage D Draft	TG	AS					
A	31.08.12	Stage D	PG	AS					
B	30.04.13	Stage E	PG	AS					

Notes  
The cladding configuration shown is based on structural dimensions taken from the original design drawings  
Structural dimensions are subject to confirmation by site survey  
For floor build up details refer to drawing series (43) Floor Finishes

Project: Centre Point  
Client: Almacantar  
Drawing title: Ground Floor and Mezzanine Details  
Mezzanine Detail  
Scale 1:5@A3 Date: August 2012 Drawn by: TG  
Project number: 2332 Drawing No: (25)522 Rev: B  
Status: STAGE E Checked by: AS

**CONRAN+ PARTNERS**  
Architects Designers  
LONDON OFFICE  
Conran Building  
22 Shad Thames,  
London SE1 2YU  
Telephone +44 (0) 20 7403 8899  
Email cp@conran.com