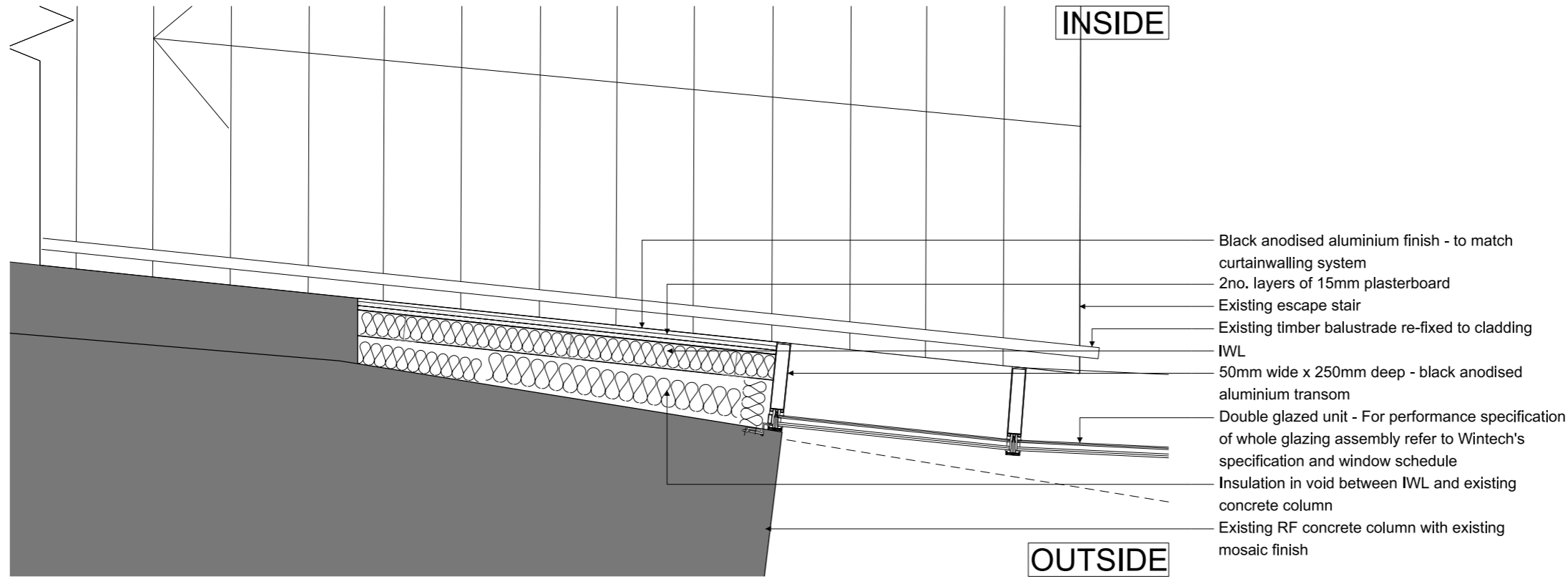


T:\12332 Centre Point\02-Sheets\25) Series External Wall\2332(25)511_Ground Mezzanine Insulated Panel Behind Column.dgn

29/04/2013

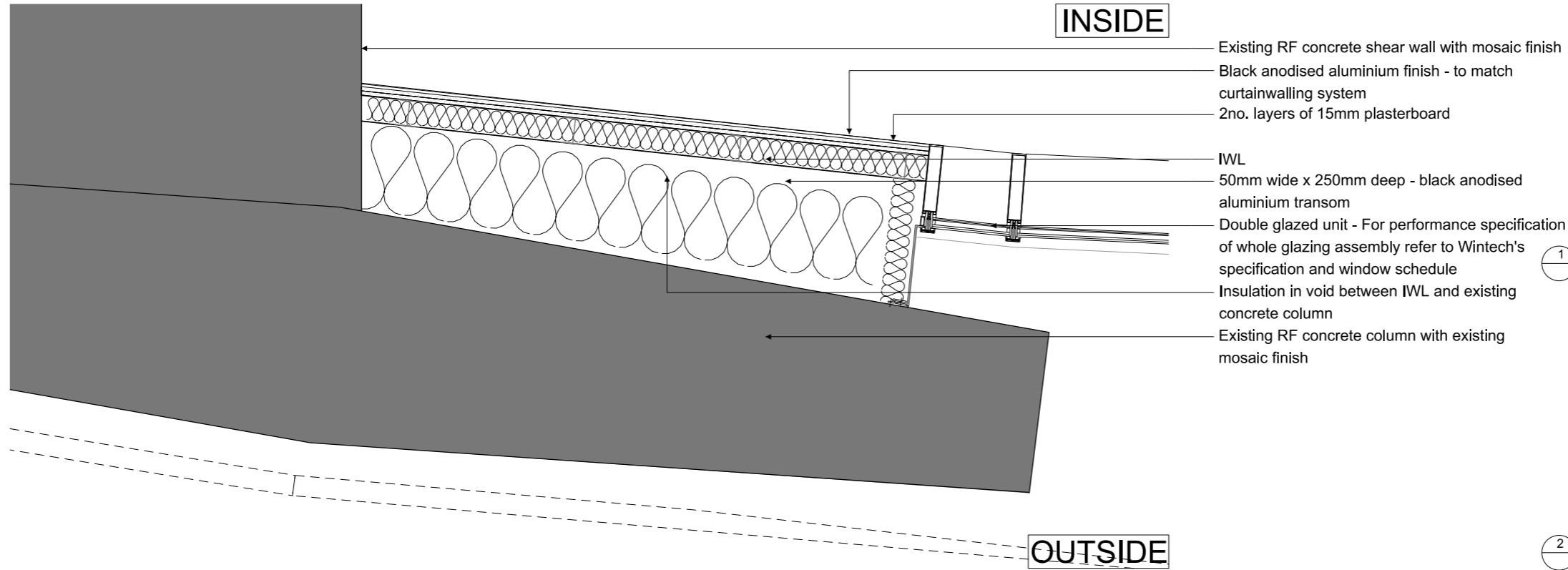
2332

Conran



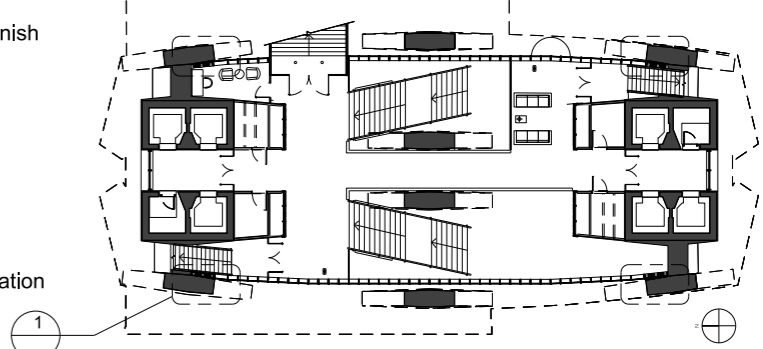
1 DETAIL PLAN AT MEZZANINE FLOOR 1:20

- Black anodised aluminium finish - to match curtainwalling system
- 2no. layers of 15mm plasterboard
- Existing escape stair
- Existing timber balustrade re-fixed to cladding
- IWL
- 50mm wide x 250mm deep - black anodised aluminium transom
- Double glazed unit - For performance specification of whole glazing assembly refer to Wintech's specification and window schedule
- Insulation in void between IWL and existing concrete column
- Existing RF concrete column with existing mosaic finish

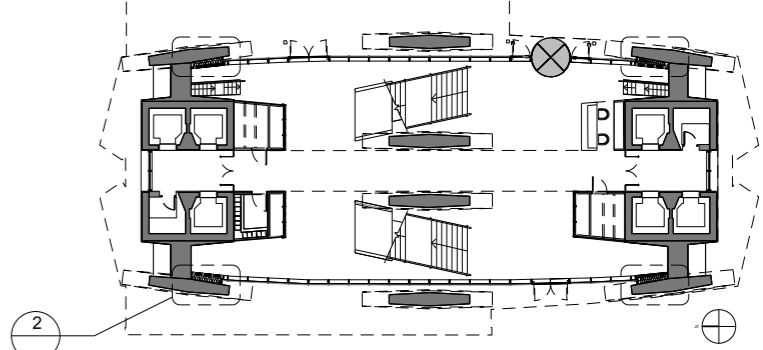


2 DETAIL PLAN AT GROUND FLOOR 1:20

- Existing RF concrete shear wall with mosaic finish
- Black anodised aluminium finish - to match curtainwalling system
- 2no. layers of 15mm plasterboard
- IWL
- 50mm wide x 250mm deep - black anodised aluminium transom
- Double glazed unit - For performance specification of whole glazing assembly refer to Wintech's specification and window schedule
- Insulation in void between IWL and existing concrete column
- Existing RF concrete column with existing mosaic finish



3 MEZZ FLOOR PLAN 1:500



4 GROUND FLOOR PLAN 1:500

All dimensions must be checked on site and not scaled from this drawing. © Conran and Partners Limited

Rev	Date	Reason	By	Checked	Rev	Date	Reason	By	Checked
-	30.04.13	STAGE E	PG	AS					

Notes
The cladding configuration shown is based on structural dimensions taken from the original design drawings
Structural dimensions are subject to confirmation by site survey

Project: Centre Point
Client: Almacantar
Drawing title: Ground Mezzanine Insulated Panel Behind Column Detail
Scale 1:20/500 Date: April 2013 Drawn by: PG
Project number: 2332 Drawing No: (25)511 Rev:-
Status: DRAFT Checked by: AS

CONRAN+ PARTNERS
Architects Designers
LONDON OFFICE
Conran Building
22 Shad Thames,
London SE1 2YU
Telephone +44 (0) 20 7403 8899
Email cp@conran.com