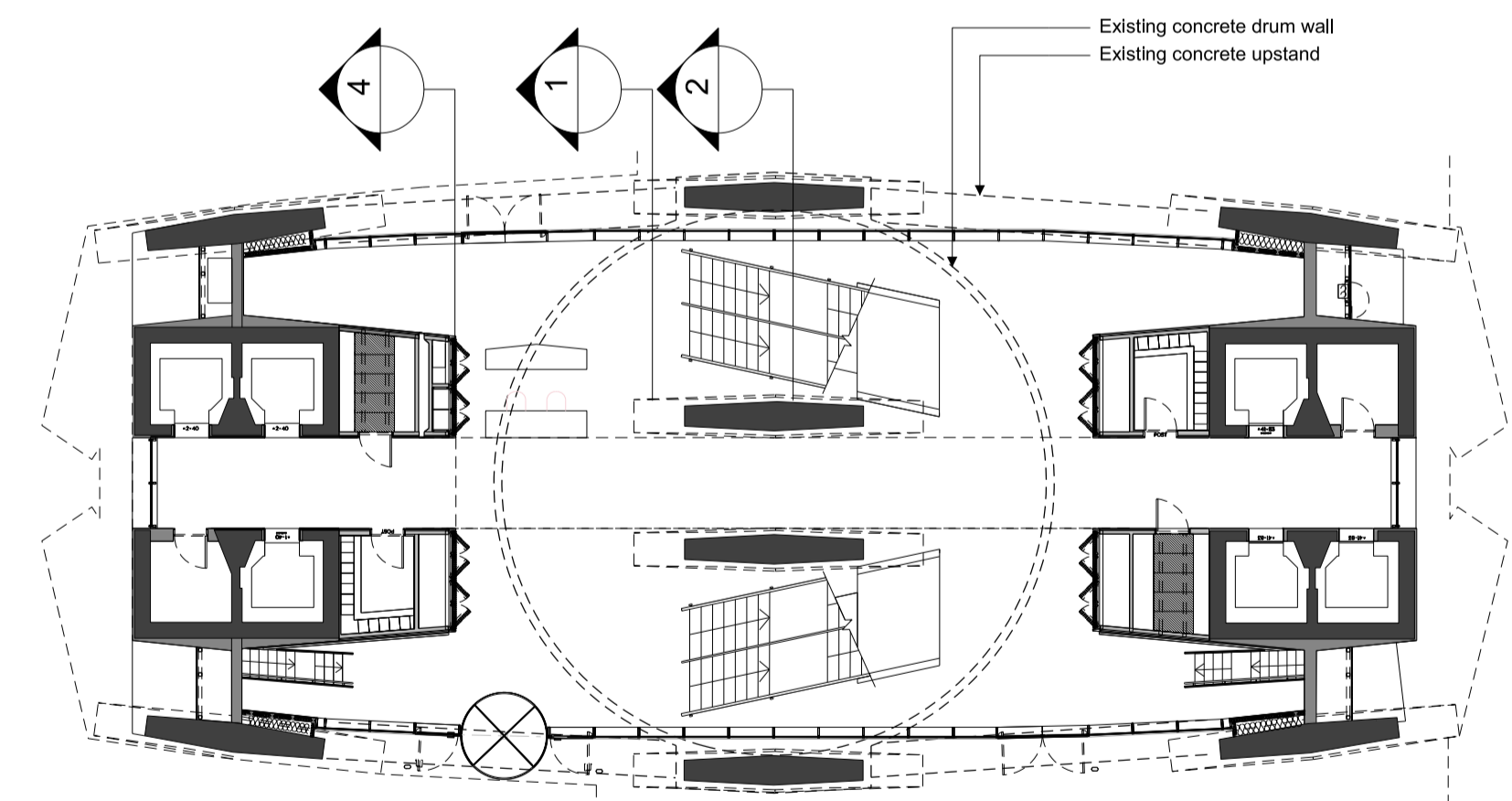


② GRD FL FACADE BASE DETAIL (BEHIND COLUMN) 1:10

④ GRD FL FACADE BASE DETAIL (UPSTAND) 1:10

① GRD FL FACADE BASE DETAIL (CONCRETE DRUM) 1:10



③ GRD FLOOR PLAN WITH DRUM STRUCTURE OVERLAY 1:200

27/03/2014 I:\conran-partners\projects\2332 Centre Point\02-Sheets\025 Series External Wall\2332\25509 Ground Floor Facade Base Detail Conditions.dgn 2332 Conran

All dimensions must be checked on site and not scaled from this drawing. © Conran and Partners Limited

Rev	Date	Reason	By	Checked	Rev	Date	Reason	By	Checked
-	30.04.13	Stage E	PG	AS					
A	31.03.14	Floor build up updated	NT	AS					

Notes  
 The cladding configuration shown is based on structural dimensions taken from the original design drawings  
 Structural dimensions are subject to confirmation by site survey  
 For floor build up details refer to drawing series (43) Floor Finishes

Project: Centre Point  
 Client: Almacantar  
 Drawing title: Ground Floor Facade  
 Base Detail Conditions  
 Scale 1:10/200 Date: April 2013 Drawn by: PG  
 Project number: 2332 Drawing No: (25)509 Rev: A  
 Status: STAGE E Checked by: AS

**CONRAN+ PARTNERS**  
 Architects Designers  
 LONDON OFFICE  
 Conran Building,  
 22 Shad Thames,  
 London SE1 2YU  
 Telephone +44 (0) 20 7403 8899  
 Email cp@conran.com