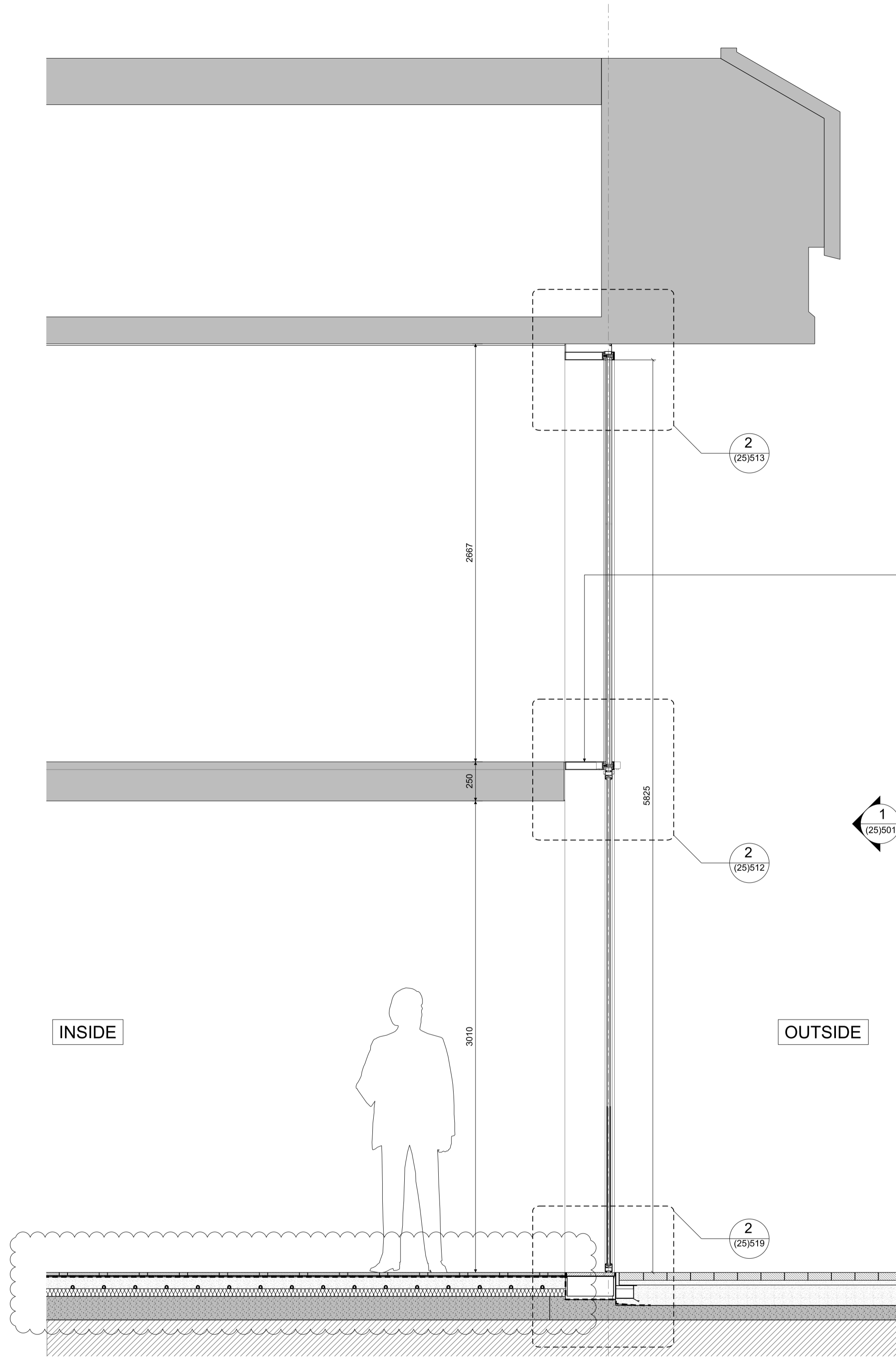


27/03/2014 \\conran-partners\projects\2332 Centre Point\02-Sheets\05 Series External Wall\2332\2506\_Ground\Mezzanine Floor Sections\_Revolving Doors.dgn  
2332  
Conran



1 SECTION 1:20

- 50x250mm black anodised aluminium transom
- Illuminated 'Centre Point' sign mounted over revolving door canopy
- Shadow box panel with back painted glass to inside face of unit
- 50x250mm black anodised aluminium transom - reinforced for traffic loading
- LED lighting incorporated in to revolving door canopy. Detail to be developed with Lighting Designers

MEZZANINE + TOP OF TRANSOM LEVEL  
FFL +28.570m

1 (25/501)

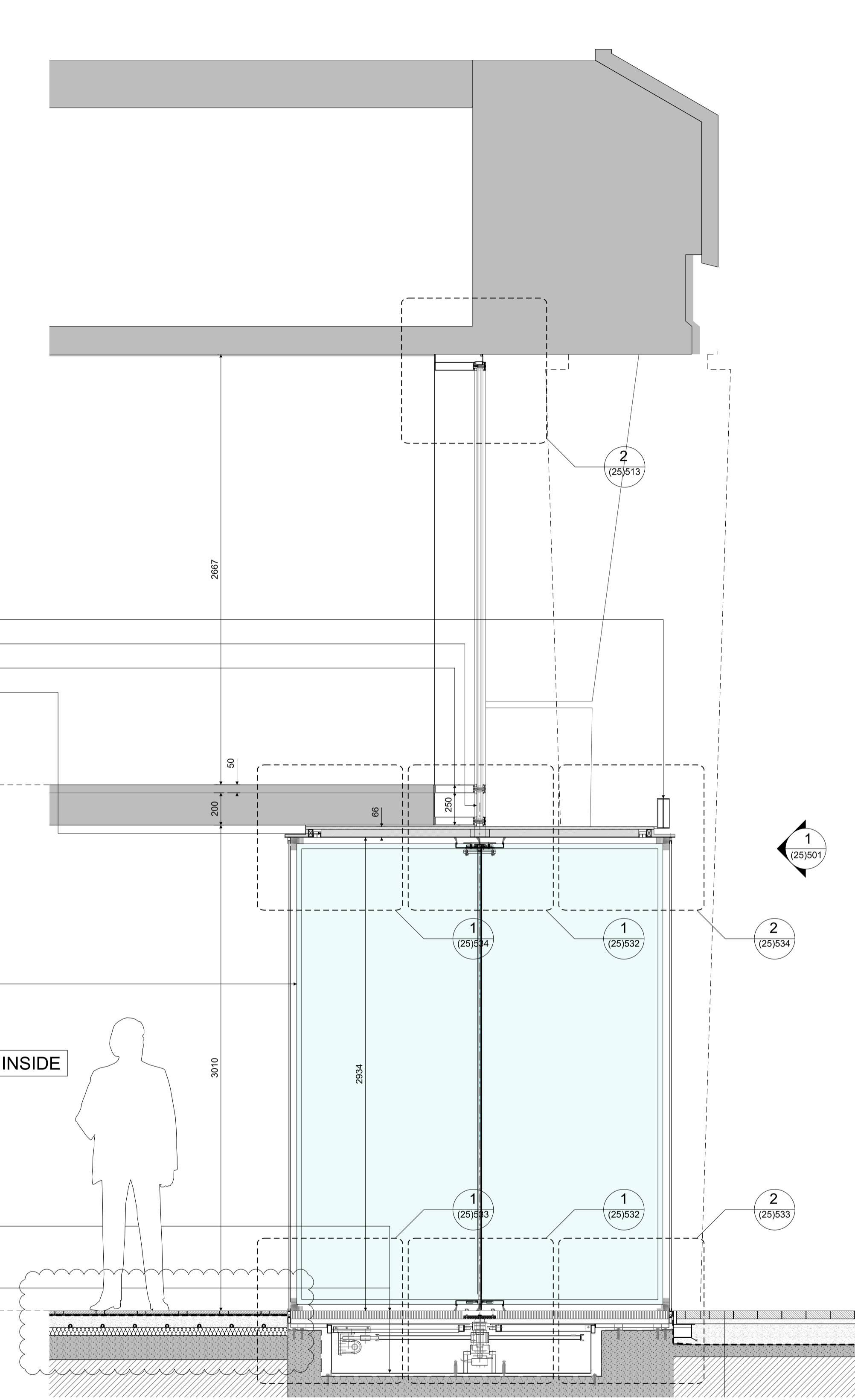
2 (25/512)

2 (25/519)

OUTSIDE

INSIDE

GROUND FLOOR  
FFL +25.310m



2 SECTION 1:20

2510mm diameter bespoke frameless glass automatic assisted revolving door, 4 leaf with concealed underfloor drive unit

Black stainless steel entrance grating to revolving door

Waterproofing to revolving door pit as J30/122A

1 (25/501)

2 (25/534)

2 (25/533)

OUTSIDE

INSIDE

All dimensions must be checked on site and not scaled from this drawing. © Conran and Partners Limited

Rev	Date	Reason	By	Checked	Rev	Date	Reason	By	Checked
-	03.08.12	Stage D Draft	TG	AS					
A	31.08.12	STAGE D	PG	AS					
B	30.04.13	Stage E	PG	AS					
C	16.12.13	Waterproofing to revolving door pit added	AS	AS					
D	31.03.14	Floor build up updated	NT	AS					

Notes  
The cladding configuration shown is based on structural dimensions taken from the original design drawings  
Structural dimensions are subject to confirmation by site survey  
For floor build up details refer to drawing series (43) Floor Finishes

Project: Centre Point  
Client: Almacantar  
Drawing title: Ground/Mezzanine Floor Sections  
Revolving Doors  
Scale 1:20@A1 Date: August 2012 Drawn by: TG  
Project number: 2332 Drawing No: (25)506 Rev: D  
Status: STAGE E Checked by: AS

**CONRAN+ PARTNERS**  
Architects Designers  
LONDON OFFICE  
Conran Building,  
22 Shad Thames,  
London SE1 2YU  
Telephone +44 (0) 20 7403 8899  
Email cp@conran.com