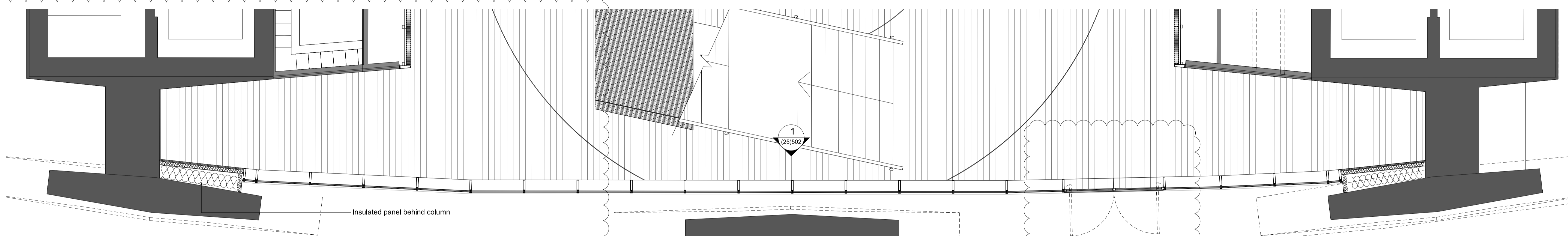
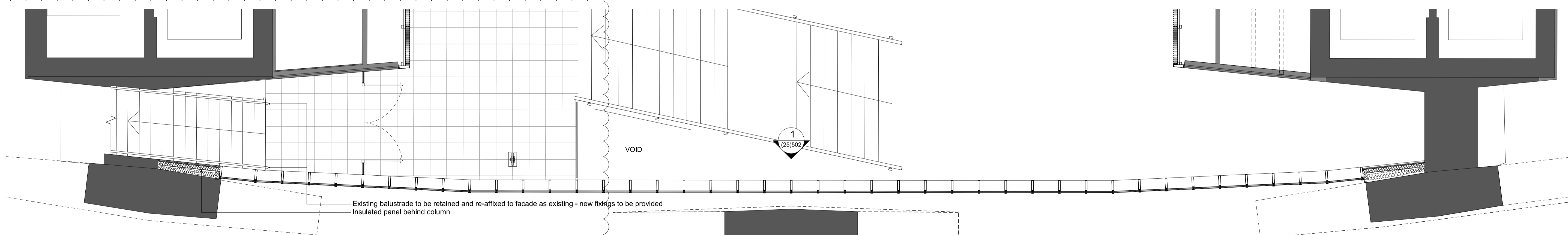


1 ELEVATION 1:50



2 GROUND PLAN 1:50



3 MEZZANINE PLAN 1:50

All dimensions must be checked on site and not scaled from this drawing. © Conran and Partners Limited

| Rev | Date | Reason | By | Checked | Rev | Date | Reason | By | Checked |
|-----|----------|---------------|----|---------|-----|------|--------|----|---------|
| - | 03.08.12 | Stage D Draft | TG | AS | | | | | |
| A | 31.08.12 | STAGE D | PG | AS | | | | | |
| B | 30.04.13 | Stage E | PG | AS | | | | | |

Notes
 The cladding configuration shown is based on structural dimensions taken from the original design drawings.
 Structural dimensions are subject to confirmation by site survey.
 For floor build up details refer to drawing series (43) Floor Finishes

Project: Centre Point
 Client: Almacantar
 Drawing title: Ground/Mezzanine Floor
 West Elevation and Plans
 Scale 1:50@A1 Date: August 2012 Drawn by: TG
 Project number: 2332 Drawing No: (25)500 Rev: B
 Status: STAGE E Checked by: AS

CONRAN+ PARTNERS
 Architects Designers

LONDON OFFICE
 Conran Building,
 22 Shad Thames,
 London SE1 2YU
 Telephone +44 (0) 20 7403 8899
 Email cp@conran.com

20/04/2013 T:\2332 Centre Point\02-Shaded\05 Series External Wall\2332(25)500_West Elevations and Plans.dgn
 2332
 Conran