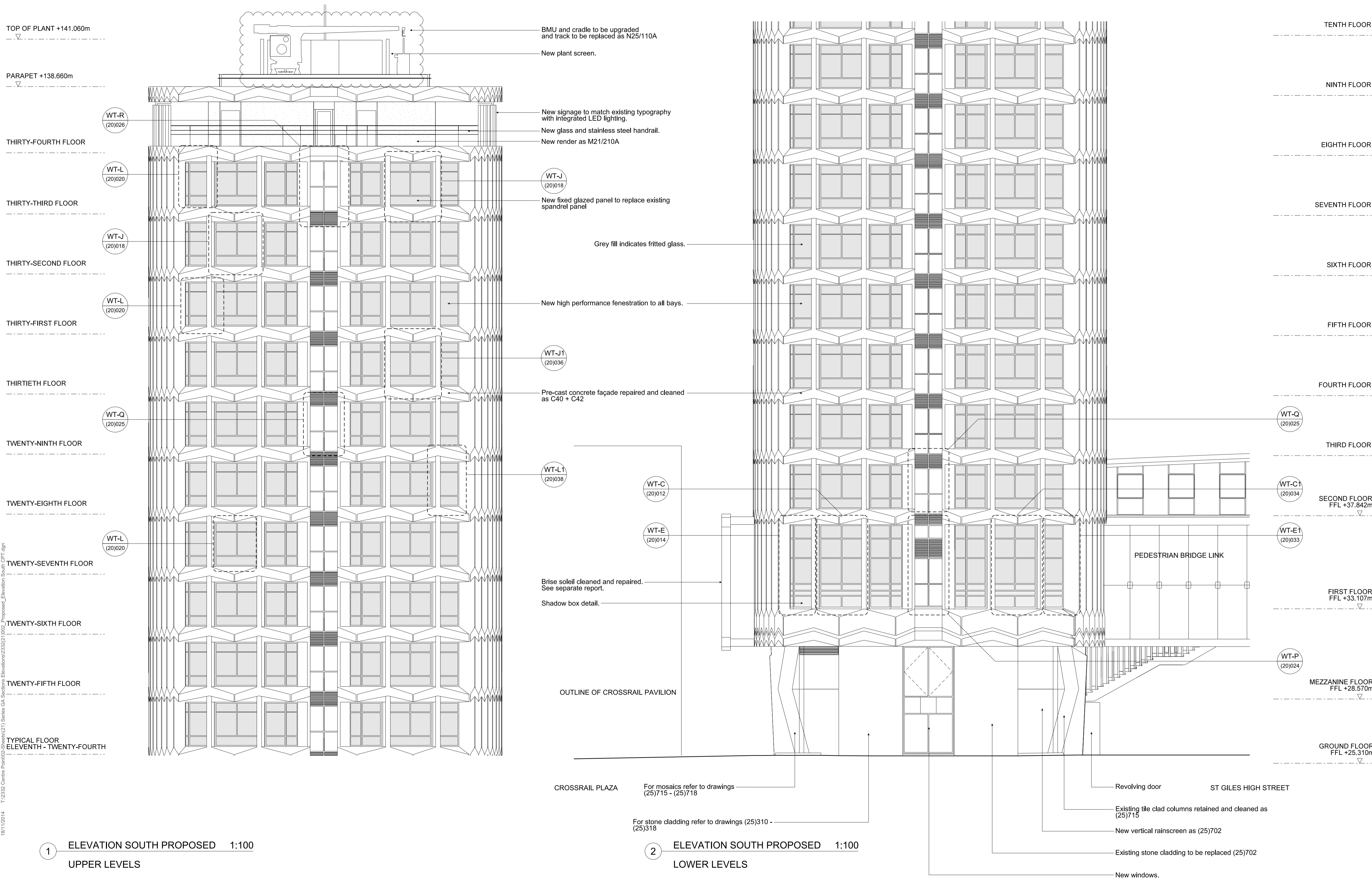


Notes



1 ELEVATION SOUTH PROPOSED 1:100
UPPER LEVELS

2 ELEVATION SOUTH PROPOSED 1:100
LOWER LEVELS

Rev	Date	Reason	By	Ckd
J	18.11.14	Plant screen updated to reflect detail	PG	AS
H	31.03.14	Annotation updated	MJM	AS
G	31.10.13	Insulated render spec ref added	AS	AS
F	30.04.13	Stage E	AS	AS
E	04.12.12	Cladding Construction Issue	PG	AS
D	23.11.12	Stage D Addendum 33FL Glazing modification	PG	AS
C	31.08.12	Stage D	MB	AS
B	03.08.12	Stage D Draft	TG	AS
A	01.06.12	Tender Issue	TG	AS
-	22.05.12	Draft Tender Issue	NT	AS

Rev Date Reason By Ckd

CONRAN+ PARTNERS
Architects Designers

LONDON OFFICE
Conran Building,
22 Shad Thames,
London SE1 2YU
Telephone +44 (0) 20 7403 8899
Email cp@conran.com

Project: Centre Point
Client: Almacantar
Drawing title: GA PROPOSED ELEVATION SOUTH
Scale 1:100@A1 Date: May 2012 Drawn by: NT
Project number: 2332 Drawing No: (21)002 Rev: J
Status: STAGE E Checked by: AS