

TOP OF PLANT +141.060m

PARAPET +138.660m

New sliding doors with anodised finish.
Backpainted glass panels to match sliding doors.

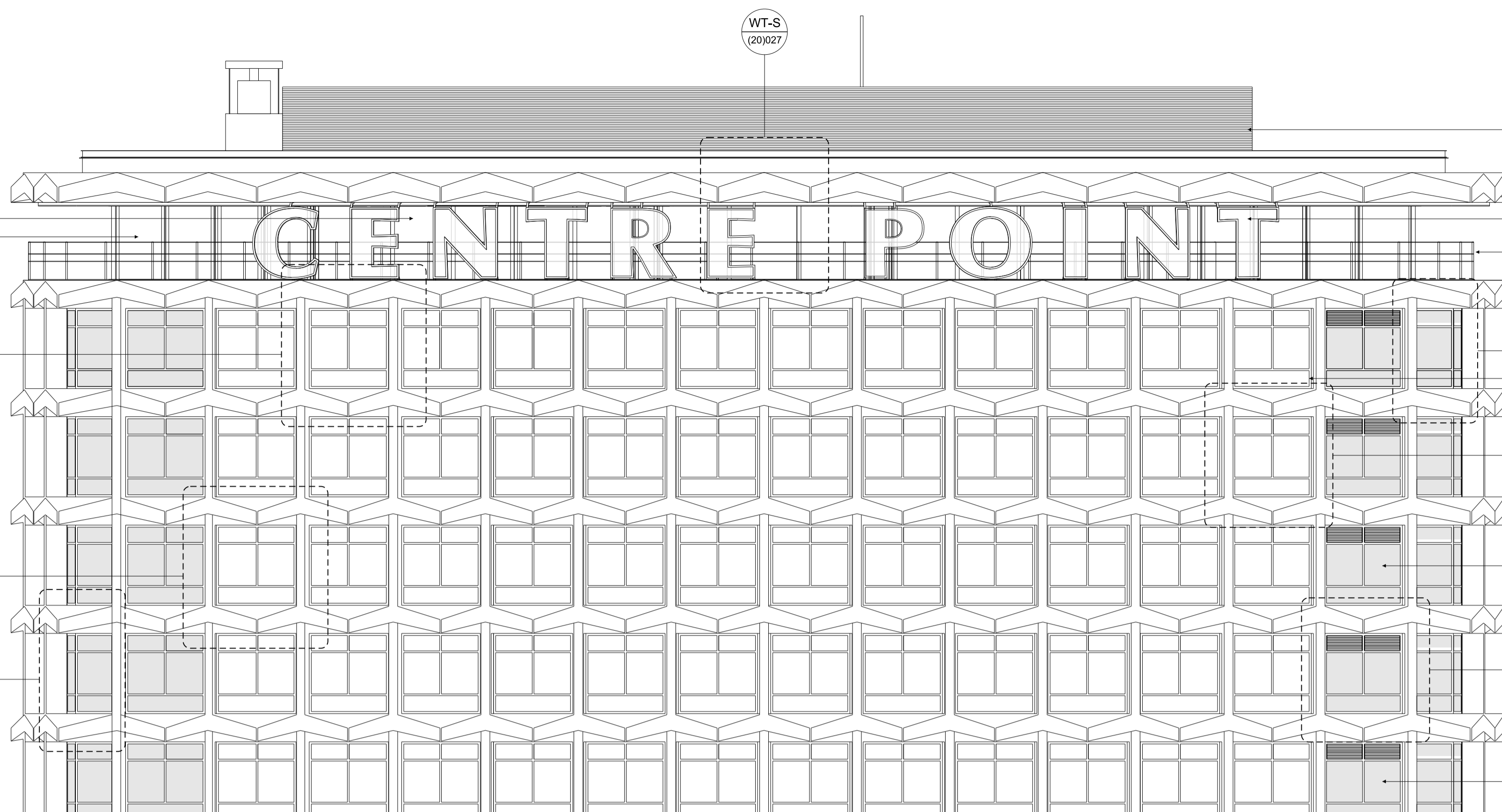
THIRTY-FOURTH FLOOR

THIRTY-THIRD FLOOR

THIRTY-SECOND FLOOR

THIRTY-FIRST FLOOR

TYPICAL FLOOR
FIFTH - THIRTIETH



New plant screen.

New signage to match existing
typography with integrated LED lighting.

New brushed stainless steel and glass handrail.

WT-L
(20)020

New fixed glazed panel to replace
existing spandrel panel

WT-Y
(20)029

New high performance fenestration in all bays.

WT-K
(20)019

Grey fill indicates fritted glass.

1 ELEVATION EAST PROPOSED 1:100
UPPER LEVELS

FOURTH FLOOR

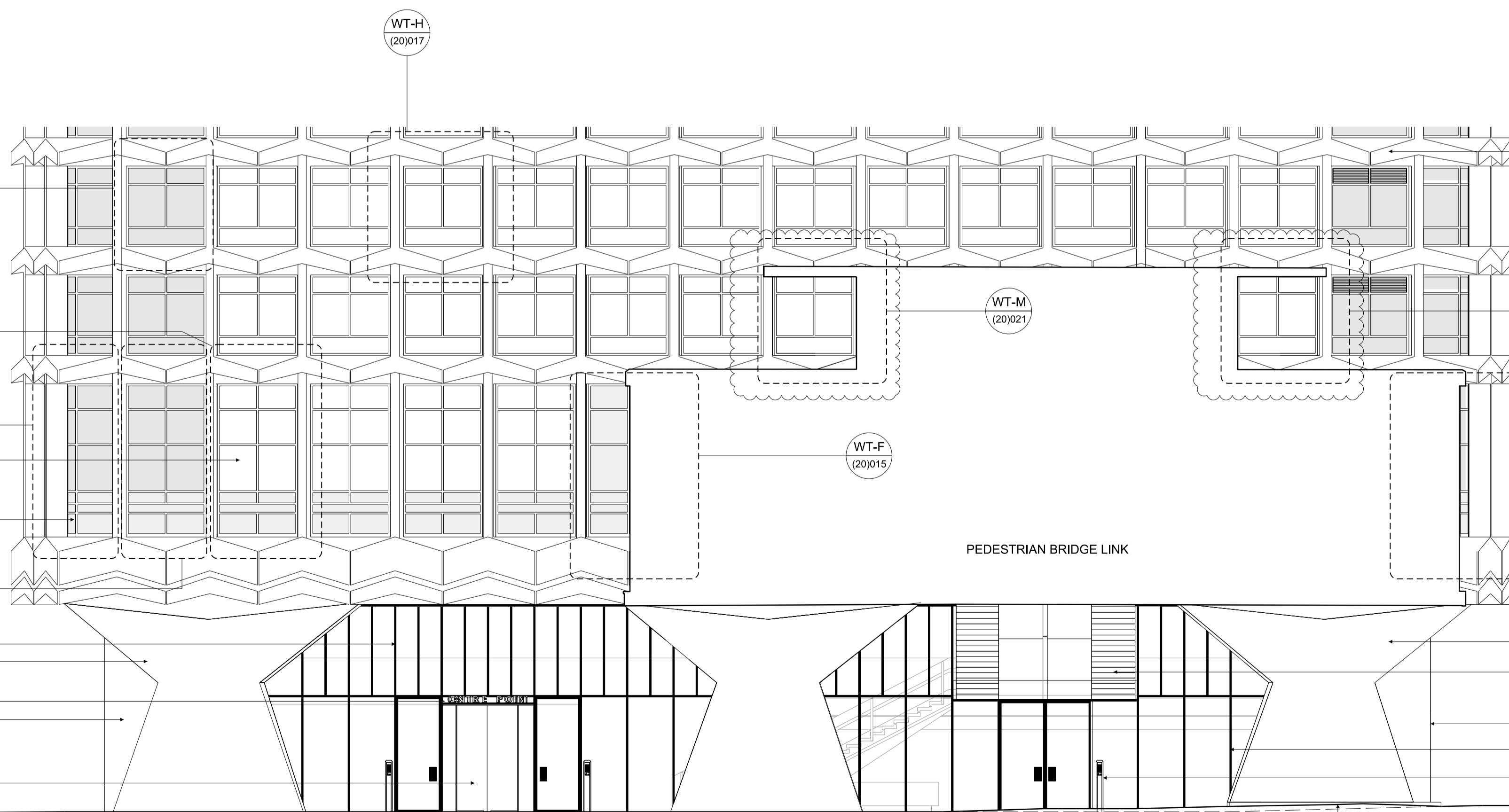
THIRD FLOOR

SECOND FLOOR
FFL +37.842m

FIRST FLOOR
FFL +33.107m

MEZZANINE FLOOR
FFL +28.570m

GROUND FLOOR
FFL +25.310m



Pre-cast concrete façade repaired and cleaned.
See separate report.

WT-V
(20)032

WT-G
(20)016

For mosaics refer to drawings (25)715 - (25)718

Existing stairs to bridge link.

For stone cladding refer to drawings (25)310 - (25)318

Anodised framed glazing.

Entrance posts as N10/450A

New ground levels to suit public realm proposals.

CROSSRAIL PLAZA

NEW OXFORD STREET

2 ELEVATION EAST PROPOSED 1:100
LOWER LEVELS

Notes

H	18.11.14	Facade updated to reflect details	PG	AS
G	31.03.14	Frit omitted, Text updated	MJM	AS
F	30.04.13	Entrance posts updated	AS	AS
E	04.12.12	Cladding Construction Issue	PG	AS
D	23.11.12	Stage D Addendum 33FL Glazing modified	PG	AS
C	31.08.12	Stage D	MB	AS
B	03.08.12	Stage D Draft	TG	AS
A	01.06.12	Tender Issue	TG	AS
-	22.05.12	Draft Tender Issue	NT	AS

Rev	Date	Reason	By	Ckd
-----	------	--------	----	-----

CONRAN+ PARTNERS
Architects Designers

LONDON OFFICE
Conran Building,
22 Shad Thames,
London SE1 2YU
Telephone +44 (0) 20 7403 8899
Email cp@conran.com

Project: Centre Point
Client: Almacantar
Drawing title: GA PROPOSED ELEVATION
EAST - LOWER AND UPPER LEVELS
Scale 1:100@A1 Date: May 2012 Drawn by: NT
Project number: 2332 Drawing No: (21)001 Rev: H
Status: STAGE E Checked by: AS